



LIST PRICES
 Effective Oct 7, 2013
 Subject to change
 upon notice

**Flexible Drive Couplings PM 90 Couplings Pump/Motor Mounts
 Hydraulic Manifolds & Manifold Accessories
 Reservoirs Reservoir Accessories Rod End Alignment Couplers Price List**



Full Product/Price Index
 On Inside Coveri

PREMIUM FLEXIBLE
 DRIVE COUPLINGS ...1,2

PM 90 COUPLINGS3

PUMP/MOTOR
 MOUNTS4-10

BAR MANIFOLDS ...10-19

INTEGRATED CIRCUIT
 BAR MANIFOLDS20

SUBPLATES21-23

COVER PLATES23

VALVE ADAPTORS24

ISOLATION PLUGS24

MANIFOLD
 ACCESSORIES25

HEADER BAR
 MANIFOLDS26-28

JUNCTION BAR
 MANIFOLDS29-31

RESERVOIRS32-37

RESERVOIR
 ACCESSORIES37-47

ROD END ALIGNMENT
 COUPLERS47

What is it, Where is it
 Index48-73



PREMIUM FLEXIBLE DRIVE COUPLINGS	
Coupling Hubs and Inserts	1
PM 90 FLEXIBLE DRIVE COUPLINGS	
Coupling Hubs and Inserts	3
PUMP/MOTOR MOUNTS	
Horizontal Aluminum Pump/Motor Mounts	4
Vertical Aluminum Pump/Motor Mounts	6
Aluminum Pump/Engine Mounts	7
Welded Steel Horizontal Mounts	8
Welded Steel Pump/Engine Mounts	8
Welded Steel Vertical Pump/Motor Mounts	9
Service Window Covers	10
BAR MANIFOLDS	
D03 Standard Design	10
D03 Standard Flow Retro Design Parallel	12
D03 High Flow Retro Design Parallel	13
D05 Standard Design.....	15
D05 High Flow Standard Design Parallel	16
D08 Standard Design.....	18
D08 High Flow Retro Design.....	19
INTEGRATED CIRCUIT BAR MANIFOLDS	20
SUBPLATES	
D03 Super Saver & Side Ported	21
D05 Super Saver & Side Ported	21
D08 Side Ported	23
COVER PLATES	
D03, D05 & D08 Cover Plates	23
VALVE ADAPTORS	24
ISOLATION PLUGS	24
MANIFOLD ACCESSORIES	
Pilot Adaptors, Unloading Modules, Orifice Plates, Tapping Plated.....	25
Relief Valve Cartridges	25
HEADER BAR MANIFOLDS	
0 Degree	26
90 Degree	27
180 Degree	28
JUNCTION BAR MANIFOLDS	
90 Degree	29
180 Degree	30
270 Degree	31
RESERVOIRS	
Vertical Econo & Dual Reservoirs	32
JIC Reservoirs	33
L Series Reservoirs	33
T Series Reservoirs	34
Horizontal Series Reservoirs	35
Drip Pans for JIC Reservoirs	35
Stacking Modules for JIC Reservoirs	36
End Covers	37
RESERVOIR ACCESSORIES	
Filler Breathers	38
Reservoir Flanges	39
SAE Full & Half Couplings	40
Channel Mounted Cushion Clamps	40
Modular Stackable Cushion Clamps	40
Clamp Anchor Channel	41
Suction Strainers	41
Tank Diffusers	42
Filter Heads & Elements	42
Pressure Gauges	44
Gauge Isolators	45
Pressure Switch	45
Liquid Level Gauges	45
Motor Base Plates	45
Motor Dampening Bars	46
Modular O'Ring Kit	47
ROD END COUPLERS M and R Series	47
What is it, Where is it Index	48



What is it, Where is it Index

Part Number	Description	Catalog Page	Price Page
056	NEMA 056 Motor Mount Service Window Cover	18	10
10S	SAE half Coupling, #10 SAE	144	38
10S-8N	SAE to NPT Full Coupling, #10 SAE to 1/4" NPT	144	38
10S-8W	SAE to Socket Weld Full Coupling, #10 SAE to 1/2" Pipe	144	38
12S	SAE half Coupling, #12 SAE	144	38
12S-12N	SAE to NPT Full Coupling, #12 SAE to 3/4" NPT	144	38
12S-12W	SAE to Socket Weld Full Coupling, #12 SAE to 3/4" Pipe	144	38
16S	SAE half Coupling, #16 SAE	144	38
16S-16N	SAE to NPT Full Coupling, #16 SAE to 1" NPT	144	38
16S-16W	SAE to Socket Weld Full Coupling, #16 SAE to 1" Pipe	144	38
182-1	NEMA 182-1 Motor Mount Service Window Cover	18	10
182-2	NEMA 182-2 Motor Mount Service Window Cover	18	10
182-3	NEMA 182-3 Motor Mount Service Window Cover	18	10
182-4	NEMA 182-4 Motor Mount Service Window Cover	18	10
20S	SAE half Coupling, #20 SAE	144	38
20S-20W	SAE to Socket Weld Full Coupling, #20 SAE to 1 1/4" Pipe	144	38
24S	SAE half Coupling, #24 SAE	144	38
24S-24W	SAE to Socket Weld Full Coupling, #24 SAE to 1 1/2" Pipe	144	38
284-1	NEMA 284-1 Motor Mount Service Window Cover	18	10
284-2	NEMA 284-2 Motor Mount Service Window Cover	18	10
284-3	NEMA 284-3 Motor Mount Service Window Cover	18	10
324-1	NEMA 324-1 Motor Mount Service Window Cover	18	10
324-2	NEMA 324-2 Motor Mount Service Window Cover	18	10
324-3	NEMA 324-3 Motor Mount Service Window Cover	18	10
324-4	NEMA 324-4 Motor Mount Service Window Cover	18	10
324-5	NEMA 324-5 Motor Mount Service Window Cover	18	10
444-1	NEMA 444-1 Motor Mount Service Window Cover	18	10
444-2	NEMA 444-2 Motor Mount Service Window Cover	18	10
444-3	NEMA 444-3 Motor Mount Service Window Cover	18	10
4S	SAE half Coupling, #4 SAE	144	38
4S-4N	SAE to NPT Full Coupling, #4 SAE to 1/4" NPT	144	38
6S	SAE half Coupling, #6 SAE	144	38
6S-6N	SAE to NPT Full Coupling, #6 SAE to 3/8" NPT	144	38
8S	SAE half Coupling, #8 SAE	144	38
8S-8N	SAE to NPT Full Coupling, #8 SAE to 1/2" NPT	144	38
8S-8W	SAE to Socket Weld Full Coupling, #8 SAE to 1/2" Pipe	144	38
BK-A03	D03 Manifold Mounting Bracket	195	11
BK-A05	D05 Manifold Mounting Bracket	195	15
BK-A08	D08 Manifold Mounting Bracket	195	18
BK-IC08	D08 Integrated Circuit Mounting Bracket	195	20
BM-AHP05x3-xx-x/x	D05 Aluminum High Flow Parallel Bar Manifold-3 1/4" Spacing	60	16
BM-AHP05x5-xx-x/x	D05 Aluminum High Flow Parallel Bar Manifold-5" Spacing	60	16
BM-AHP5E3-xx-x/x	D05 E Alt A Aluminum High Flow Parallel Bar Manifold-3 1/4" Spacing	62	17
BM-AHP5E5-xx-x/x	D05 E Alt A Aluminum High Flow Parallel Bar Manifold-5" Spacing	62	17
BM-AHP5H3-xx-x/x	D05 H Alt B Aluminum High Flow Parallel Bar Manifold-3 1/4" Spacing	64	17
BM-AHP5H5-xx-x/x	D05 H Alt B Aluminum High Flow Parallel Bar Manifold-5" Spacing	64	17
BM-ASP03x2-xx-x/x	D03 Aluminum Standard Flow Parallel Bar Manifold-2" Spacing	48	10
BM-ASP03x4-xx-x/x	D03 Aluminum Standard Flow Parallel Bar Manifold-4" Spacing	48	11
BM-ASP05x3-xx-x/x	D05 Aluminum Standard Flow Parallel Bar Manifold-3 1/4" Spacing	56	15
BM-ASP05x5-xx-x/x	D05 Aluminum Standard Flow Parallel Bar Manifold-5" Spacing	56	15
BM-ASP08x5-xx-x/x	D08 Aluminum Standard Flow Parallel Bar Manifold-5 1/4" Spacing	66	18
BM-ASP08x7-xx-x/x	D08 Aluminum Standard Flow Parallel Bar Manifold-7" Spacing	66	18
BM-ASS03x2-xx-x/x	D03 Aluminum Standard Flow Series Bar Manifold	50	11
BM-ASS05x3-xx-x/x	D05 Aluminum Standard Flow Series Bar Manifold-3 1/4" Spacing	58	15
BM-ASS05x5-xx-x/x	D05 Aluminum Standard Flow Series Bar Manifold-5" Spacing	58	15
BM-ASS08x7-xx-x/x	D08 Aluminum Standard Flow Series Bar Manifold-7" Spacing	70	19
BMR-AHP03x2-xx-x/x	D03 Retro Design Aluminum High Flow Parallel Bar Manifold-2 1/8" Spacing	54	13
BMR-AHP03x4-xx-x/x	D03 Retro Design Aluminum High Flow Parallel Bar Manifold-4" Spacing	54	13
BMR-AHP08x5-xx-x/x	D08 Retro Design Aluminum High Flow Parallel Bar Manifold-5 1/4" Spacing	68	19
BMR-AHP08x7-xx-x/x	D08 Retro Design Aluminum High Flow Parallel Bar Manifold-7" Spacing	68	19

What is it, Where is it Index



Part Number	Description	Catalog Page	Price Page
BMR-ASP03x2-xx-x/x	D03 Retro Design Aluminum Standard Flow Parallel Bar Manifold-2 1/8" Spacing	52	12
BMR-ASP03x4-xxx-x/x	D03 Retro Design Aluminum Standard Flow Parallel Bar Manifold-4" Spacing	52	12
BMR-SHP03x2-xx-x/x	D03 Retro Design Steel High Flow Parallel Bar Manifold-2 1/8" Spacing	54	13
BMR-SHP03x4-xx-x/x	D03 Retro Design Steel High Flow Parallel Bar Manifold-4" Spacing	54	13
BMR-SHP08x5-xx-x/x	D08 Retro Design Steel High Flow Parallel Bar Manifold-5 1/4" Spacing	68	19
BMR-SHP08x7-xx-x/x	D08 Retro Design Steel High Flow Parallel Bar Manifold-7" Spacing	68	19
BMR-SSP03x2-xx-x/x	D03 Retro Design Steel Standard Flow Parallel Bar Manifold-2 1/8" Spacing	52	12
BMR-SSP03x4-xx-x/x	D03 Retro Design Steel Standard Flow Parallel Bar Manifold-4" Spacing	52	12
BM-SHP05x3-xx-x/x	D05 Steel High Flow Parallel Bar Manifold-3 1/4" Spacing	60	16
BM-SHP05x5-xx-x/x	D05 Steel High Flow Parallel Bar Manifold-5" Spacing	60	16
BM-SHP5Ex3-xx-x/x	D05 E Alt A Steel High Flow Parallel Bar Manifold-3 1/4" Spacing	62	17
BM-SHP5Ex5-xx-x/x	D05 E Alt A Steel High Flow Parallel Bar Manifold-5" Spacing	62	17
BM-SHP5Hx3-xx-x/x	D05 H Alt B Steel High Flow Parallel Bar Manifold-3 1/4" Spacing	64	17
BM-SHP5Hx5-xx-x/x	D05 H Alt B Steel High Flow Parallel Bar Manifold-5" Spacing	64	17
BM-SSP03x2-xx-x/x	D03 Steel Standard Flow Parallel Bar Manifold-2" Spacing	48	10
BM-SSP03x4-xx-x/x	D03 Steel Standard Flow Parallel Bar Manifold-4" Spacing	48	11
BM-SSP05x3-xx-x/x	D05 Steel Standard Flow Parallel Bar Manifold-3 1/4" Spacing	56	15
BM-SSP05x5-xx-x/x	D05 Steel Standard Flow Parallel Bar Manifold-5" Spacing	56	15
BM-SSP08x5-xx-x/x	D08 Steel Standard Flow Parallel Bar Manifold-5 1/4" Spacing	66	18
BM-SSP08x7-xx-x/x	D08 Steel Standard Flow Parallel Bar Manifold-7" Spacing	66	18
BM-SSS03x2-xx-x/x	D03 Steel Standard Flow Series Bar Manifold	50	11
BM-SSS05x3-xx-x/x	D05 Steel Standard Flow Series Bar Manifold-3 1/4" Spacing	58	15
BM-SSS05x5-xx-x/x	D05 Steel Standard Flow Series Bar Manifold-5" Spacing	58	15
BM-SSS08x7-xx-x/x	D08 Steel Standard Flow Series Bar Manifold-7" Spacing	70	19
CP-ASP03E-1/G	D03 Aluminum Parallel Flow Cover Plate w/Gauge Ports	86	23
CP-ASP03E-1/Z	D03 Aluminum Parallel Flow Cover Plate	86	23
CP-ASP05E-1/G	D05 Aluminum Parallel Flow Cover Plate w/Gauge Ports	88	23
CP-ASP05E-1/Z	D05 Aluminum Parallel Flow Cover Plate	88	23
CP-ASP08E-1/G	D08 Aluminum Parallel Flow Cover Plate w/Gauge Ports	90	23
CP-ASP08E-1/Z	D08 Aluminum Parallel Flow Cover Plate	90	23
CP-ASS03E-1/Z	D03 Aluminum Series Flow Cover Plate	87	23
CP-ASS05E-1/Z	D05 Aluminum Series Flow Cover Plate	89	23
CP-ASS08E-1/Z	D08 Aluminum Series Flow Cover Plate	91	23
CP-SSP03E-1/G	D03 Steel Parallel Flow Cover Plate w/Gauge Ports	86	23
CP-SSP03E-1/Z	D03 Steel Parallel Flow Cover Plate	86	23
CP-SSP05E-1/G	D05 Steel Parallel Flow Cover Plate w/Gauge Ports	88	23
CP-SSP05E-1/Z	D05 Steel Parallel Flow Cover Plate	88	23
CP-SSP08E-1/G	D08 Steel Parallel Flow Cover Plate w/Gauge Ports	90	23
CP-SSP08E-1/Z	D08 Steel Parallel Flow Cover Plate	90	23
CP-SSS03E-1/Z	D03 Steel Series Flow Cover Plate	87	23
CP-SSS05E-1/Z	D05 Steel Series Flow Cover Plate	89	23
CP-SSS08E-1/Z	D08 Steel Series Flow Cover Plate	91	23
CSFE-003-069	Spin-On Filter Cellulose Media Element, 3 Micron, 1 1/2-16 UN Mounting Thread, 6.9" Length	159	40
CSFE-003-109	Spin-On Filter Cellulose Media Element, 3 Micron, 1 1/2-16 UN Mounting Thread, 10.9" Length	159	40
CSFE-003-109/WA	Spin-On Filter Cellulose Media Element, 3 Micron, 1 1/2-16 UN Mounting Thread, 10.9" Length, Water Absorbing	159	40
CSFE-010-069	Spin-On Filter Cellulose Media Element, 10 Micron, 1 1/2-16 UN Mounting Thread, 6.9" Length	159	40
CSFE-010-109	Spin-On Filter Cellulose Media Element, 10 Micron, 1 1/2-16 UN Mounting Thread, 10.9" Length	159	40
CSFE-010-109/WA	Spin-On Filter Cellulose Media Element, 10 Micron, 1 1/2-16 UN Mounting Thread, 10.9" Length, Water Absorbing	159	40
CSFE-025-069	Spin-On Filter Cellulose Media Element, 25 Micron, 1 1/2-16 UN Mounting Thread, 6.9" Length	159	40
CSFE-025-109	Spin-On Filter Cellulose Media Element, 25 Micron, 1 1/2-16 UN Mounting Thread, 10.9" Length	159	40
CSFE-141-069	Spin-On Filter Cellulose Media Element, 141 Micron, 1 1/2-16 UN Mounting Thread, 6.9" Length	159	40
CSFE-141-109	Spin-On Filter Cellulose Media Element, 141 Micron, 1 1/2-16 UN Mounting Thread, 10.9" Length	159	40
CTTE-ASR-003-092-BD	Tank Top Filter Cellulose Media Element for AI S/R Line Series, 3 Micron, 9.19" Length, Bi-Directional Flow	164	42
CTTE-ASR-003-092-OI/WA	Tank Top Filter Cellulose Media Element for AI S/R Line Series, 3 Micron, 9.19" Length, Water Absorbing, O/I Flow	164	42
CTTE-ASR-010-092-BD	Tank Top Filter Cellulose Media Element for AI S/R Line Series, 10 Micron, 9.19" Length, Bi-Directional Flow	164	42
CTTE-ASR-010-182-BD	Tank Top Filter Cellulose Media Element for AI S/R Line Series, 10 Micron, 18.19" Length, Bi-Directional Flow	164	42
CTTE-ASR-025-092-BD	Tank Top Filter Cellulose Media Element for AI S/R Line Series, 25 Micron, 9.19" Length, Bi-Directional Flow	164	42
CTTE-ASR-025-182-BD	Tank Top Filter Cellulose Media Element for AI S/R Line Series, 25 Micron, 18.19" Length, Bi-Directional Flow	164	42
CTTE-ASR-100-092-IO	Tank Top Filter Cellulose Media Element for AI S/R Line Series, 100 Micron, 9.19" Length, I/O Flow	164	42
CTTE-ASR-100-092-IO/M	Tank Top Filter Cellulose Media Element for AI S/R Line Series, 100 Micron, 9.19" Length, I/O Flow, Magnetic	164	42
CTTE-ASR-100-092-OI	Tank Top Filter Cellulose Media Element for AI S/R Line Series, 100 Micron, 9.19" Length, O/I Flow	164	42
CTTE-ASR-100-092-OI/M	Tank Top Filter Cellulose Media Element for AI S/R Line Series, 100 Micron, 9.19" Length, O/I Flow, Magnetic	164	42



What is it, Where is it Index

Part Number	Description	Catalog Page	Price Page
CTTE-ASR-100-182-OI	Tank Top Filter Cellulose Media Element for AI S/R Line Series, 100 Micron, 18.19" Length, O/I Flow	164	42
CTTE-ITB-03N	Tank Top Filter Cellulose Media Element for Integral Breather Series, 3 Micron	161	41
CTTE-ITB-10N	Tank Top Filter Cellulose Media Element for Integral Breather Series, 10 Micron	161	41
CTTE-ITB-25N	Tank Top Filter Cellulose Media Element for Integral Breather Series, 25 Micron	161	41
CTTE-SSR-003-092-BD	Tank Top Filter Cellulose Media Element for Stl S/R Line Series, 3 Micron, 9.19" Length, Bi-Directional Flow	165	42
CTTE-SSR-010-092-BD	Tank Top Filter Cellulose Media Element for Stl S/R Line Series, 10 Micron, 9.19" Length, Bi-Directional Flow	165	42
CTTE-SSR-010-092-IO/WA	Tank Top Filter Cellulose Media Element for Stl S/R Line Series, 10 Micron, 9.19" Length, Water Absorbing, I/O Flow	165	42
CTTE-SSR-010-182-BD	Tank Top Filter Cellulose Media Element for Stl S/R Line Series, 10 Micron, 18.19" Length, Bi-Directional Flow	165	42
CTTE-SSR-025-092-BD	Tank Top Filter Cellulose Media Element for Stl S/R Line Series, 25 Micron, 9.19" Length, Bi-Directional Flow	165	42
CTTE-SSR-025-182-BD	Tank Top Filter Cellulose Media Element for Stl S/R Line Series, 25 Micron, 18.19" Length, Bi-Directional Flow	165	42
CTTE-SSR-100-092-IO	Tank Top Filter Cellulose Media Element for Stl S/R Line Series, 100 Micron, 9.19" Length, I/O Flow	165	42
CTTE-SSR-100-092-IO/M	Tank Top Filter Cellulose Media Element for Stl S/R Line Series, 100 Micron, 9.19" Length, I/O Flow, Magnetic	165	42
CTTE-SSR-100-092-OI	Tank Top Filter Cellulose Media Element for Stl S/R Line Series, 100 Micron, 9.19" Length, O/I Flow	165	42
CTTE-SSR-100-092-OI/M	Tank Top Filter Cellulose Media Element for Stl S/R Line Series, 100 Micron, 9.19" Length, O/I Flow, Magnetic	165	42
E575xx100M	5.75" Pilot Engine Mount to Metric 100mm Pump	30	7
E575xx2A	5.75" Pilot Engine Mount to SAE A Pump	30	7
E575xx2AA	5.75" Pilot Engine Mount to SAE 2AA Pump	30	7
E575xx2B	5.75" Pilot Engine Mount to SAE B Pump	30	7
E575xx4F	5.75" Pilot Engine Mount to USA4F17 Pump	30	7
E575xx80M	5.75" Pilot Engine Mount to Metric 80mm Pump	30	7
E575xx80MS	5.75" Pilot Engine Mount to Metric 80mm Special Pump	30	7
E644xx100M	6.44" Pilot Engine Mount to Metric 100mm Pump	31	7
E644xx125M	6.44" Pilot Engine Mount to Metric 125mm Pump	31	7
E644xx2A	6.44" Pilot Engine Mount to SAE A Pump	31	7
E644xx2AA	6.44" Pilot Engine Mount to SAE 2AA Pump	31	7
E644xx2B	6.44" Pilot Engine Mount to SAE B Pump	31	7
E644xx2C	6.44" Pilot Engine Mount to SAE C Pump	31	7
E644xx4F	6.44" Pilot Engine Mount to USA4F17 Pump	31	7
E644xx63M	6.44" Pilot Engine Mount to Metric 63mm Pump	31	7
E644xx63MS	6.44" Pilot Engine Mount to Metric 63mm Special Pump	31	7
E644xx80M	6.44" Pilot Engine Mount to Metric 80mm Pump	31	7
E644xx80MS	6.44" Pilot Engine Mount to Metric 80mm Special Pump	31	7
E700xx100M	7.00" Pilot Engine Mount to Metric 100mm Pump	31	7
E700xx125M	7.00" Pilot Engine Mount to Metric 125mm Pump	31	7
E700xx2A	7.00" Pilot Engine Mount to SAE A Pump	31	7
E700xx2AA	7.00" Pilot Engine Mount to SAE 2AA Pump	31	7
E700xx2B	7.00" Pilot Engine Mount to SAE B Pump	32	7
E700xx2C	7.00" Pilot Engine Mount to SAE C Pump	32	7
E700xx4F	7.00" Pilot Engine Mount to USA4F17 Pump	32	7
E700xx63M	7.00" Pilot Engine Mount to Metric 63mm Pump	32	7
E700xx63MS	7.00" Pilot Engine Mount to Metric 63mm Special Pump	32	7
E700xx80M	7.00" Pilot Engine Mount to Metric 80mm Pump	32	7
E700xx80MS	7.00" Pilot Engine Mount to Metric 80mm Special Pump	32	7
E787xx100M	7.87" Pilot Engine Mount to Metric 100mm Pump	32	7
E787xx125M	7.87" Pilot Engine Mount to Metric 125mm Pump	32	7
E787xx2A	7.87" Pilot Engine Mount to SAE A Pump	32	7
E787xx2B	7.87" Pilot Engine Mount to SAE B Pump	32	7
E787xx2C	7.87" Pilot Engine Mount to SAE C Pump	32	7
E787xx63M	7.87" Pilot Engine Mount to Metric 63mm Pump	32	7
E787xx63MS	7.87" Pilot Engine Mount to Metric 63mm Special Pump	32	7
E787xx80M	7.87" Pilot Engine Mount to Metric 80mm Pump	32	7
E787xx80MS	7.87" Pilot Engine Mount to Metric 80mm Special Pump	32	7
FB-A008P	Filler Breather Assembly, A Cap, 1/2" Mounting Flange, P Screen	140	36
FB-A008W	Filler Breather Assembly, A Cap, 1/2" Mounting Flange, W Screen	140	36
FB-C-A	Filler Breather Cap, A Cap	139	36
FB-C-D	Filler Breather Cap, D Cap	139	36
FB-C-H	Filler Breather Cap, H Cap	139	36
FB-C-K	Filler Breather Cap, K Cap	139	36
FB-C-x-Dxx	Filler Breather Cap w/Dipstick	139	36
FB-C-MB-P004	Filler Breather Cap, Mini Cap, 1/4 NPT	139	36
FB-C-MB-P006	Filler Breather Cap, Mini Cap, 3/8 NPT	139	36
FB-C-MB-P008	Filler Breather Cap, Mini Cap, 1/2 NPT	139	36

What is it, Where is it Index



Part Number	Description	Catalog Page	Price Page
FB-C-MB-P012	Filler Breather Cap, Mini Cap, 3/4 NPT	139	36
FB-F-008	Filler Breather Mounting Flange x 1/2"	139	36
FB-F-108	Filler Breather Mounting Flange x 1 1/2"	139	36
FB-F-600	Filler Breather Mounting Flange x 6"	139	36
FB-K008W	Filler Breather Assembly, K Cap, 1/2" Mounting Flange, W Screen	140	36
FB-O-L	Filler Breather Cap Lock Kit	140	36
FB-O-PL	Filler Breather Pad Lock for Cap Lock Kit (not included with FB-O-L)	140	36
FB-O-SM	Filler Breather Side Mounting Kit	140	36
FBS-10012-012P	NPT Style Filler Breather Spin-On Adapter, 1-12 UN x 3/4 NPT	138	36
FBS-10012-B	Bayonet Style Filler Breather Spin-On Adapter, 1-12 UN	138	36
FBS-10216-012P	NPT Style Filler Breather Spin-On Adapter, 1 1/8-16 UN x 3/4 NPT	138	36
FBS-10216-B	Bayonet Style Filler Breather Spin-On Adapter, 1 1/8-16 UN	138	36
FBS-10816-104P	NPT Style Filler Breather Spin-On Adapter, 1 1/2-16 UN x 1 1/4 NPT	138	36
FBS-10816-B	Bayonet Style Filler Breather Spin-On Adapter, 1 1/2-16 UN	138	36
FBS-10816-F	Flange Style Filler Breather Spin-On Adapter, 1 1/2-16 UN	138	36
FBS-10816-FG	Flange Style Filler Breather Spin-On Adapter, 1 1/2-16 UN with Gauge Port	138	36
FB-S-C16	Filler Breather Screen, C Screen, 16 Mesh, Stainless Steel x 3"	139	36
FB-S-N	Filler Breather Screen, N Screen, 200 Mesh, Brass x 6"	139	36
FB-S-P	Filler Breather Screen, P Screen, 30 Mesh, Nylon x 4"	139	36
FB-S-R	Filler Breather Screen, R Screen, 30 Mesh, Brass x 4"	139	36
FB-S-V	Filler Breather Screen, V Screen, 30 Mesh, Brass x 9 1/4"	139	36
FB-S-W	Filler Breather Screen, W Screen, 30 Mesh, Stainless Steel x 3 1/4"	139	36
FB-S-X	Filler Breather Screen, X Screen, 30 Mesh, Stainless Steel x 6 1/4"	139	36
FB-S-Y	Filler Breather Screen, Y Screen, 30 Mesh, Stainless Steel x 8 1/4"	139	36
FB-S-Z	Filler Breather Screen, Z Screen, 30 Mesh, Stainless Steel x 10 1/4"	139	36
FK-A03	D03 Manifold Flange Mounting Kit	195	11
FK-A05	D05 Manifold Flange Mounting Kit	195	15
FK-A08	D08 Manifold Flange Mounting Kit	195	18
GI-01-NPT	Gauge Isolator, Single Station, 1/4" NPT Port	168	43
GI-01-SAE	Gauge Isolator, Single Station, #4 SAE Port	168	43
GI-06-SAE	Gauge Isolator, Six Station, #4 SAE Port	168	43
HA-0002P/01P-xx-1/2	Header Manifold, 0 Degree Aluminum, 1/8 NPT End Ports x 1/16 NPT Side Ports	107	26
HA-0002P/02P-xx-1/2	Header Manifold, 0 Degree Aluminum, 1/8 NPT End Ports x 1/8 NPT Side Ports	107	
HA-0004P/02P-xx-1/2	Header Manifold, 0 Degree Aluminum, 1/4 NPT End Ports x 1/8 NPT Side Ports	107	26
HA-0004x/04x-xx-1/2	Header Manifold, 0 Degree Aluminum, Size 4 End Ports x Size 4 Side Ports	108	
HA-0006x/02P-xx-1/2	Header Manifold, 0 Degree Aluminum, Size 6 End Ports x 1/8 NPT Side Ports	107	
HA-0006x/04x-xx-1/2	Header Manifold, 0 Degree Aluminum, Size 6 End Ports x Size 4 Side Ports	108	26
HA-0006x/06x-xx-1/2	Header Manifold, 0 Degree Aluminum, Size 6 End Ports x Size 6 Side Ports	109	
HA-0008x/04x-xx-1/2	Header Manifold, 0 Degree Aluminum, Size 8 End Ports x Size 4 Side Ports	108	
HA-0008x/06x-xx-1/2	Header Manifold, 0 Degree Aluminum, Size 8 End Ports x Size 6 Side Ports	109	26
HA-0008x/08x-xx-1/2	Header Manifold, 0 Degree Aluminum, Size 8 End Ports x Size 8 Side Ports	110	
HA-0012x/06x-xx-1/2	Header Manifold, 0 Degree Aluminum, Size 12 End Ports x Size 6 Side Ports	109	
HA-0012x/08x-xx-1/2	Header Manifold, 0 Degree Aluminum, Size 12 End Ports x Size 8 Side Ports	110	26
HA-0012x/12x-xx-1/2	Header Manifold, 0 Degree Aluminum, Size 12 End Ports x Size 12 Side Ports	110	
HA-0016x/08x-xx-1/2	Header Manifold, 0 Degree Aluminum, Size 16 End Ports x Size 8 Side Ports	110	
HA-0016x/12x-xx-1/2	Header Manifold, 0 Degree Aluminum, Size 16 End Ports x Size 12 Side Ports	110	26
HA-0016x/16x-xx-1/2	Header Manifold, 0 Degree Aluminum, Size 16 End Ports x Size 16 Side Ports	111	
HA-0020x/12x-xx-1/2	Header Manifold, 0 Degree Aluminum, Size 20 End Ports x Size 12 Side Ports	110	
HA-0020x/16x-xx-1/2	Header Manifold, 0 Degree Aluminum, Size 20 End Ports x Size 16 Side Ports	111	26
HA-0020x/20x-xx-1/2	Header Manifold, 0 Degree Aluminum, Size 20 End Ports x Size 20 Side Ports	111	
HA-0024x/16x-xx-1/2	Header Manifold, 0 Degree Aluminum, Size 24 End Ports x Size 16 Side Ports	111	
HA-0024x/20x-xx-1/2	Header Manifold, 0 Degree Aluminum, Size 24 End Ports x Size 20 Side Ports	111	26
HA-0024x/24x-xx-1/2	Header Manifold, 0 Degree Aluminum, Size 24 End Ports x Size 24 Side Ports	111	
HA-0032x/24x-xx-1/2	Header Manifold, 0 Degree Aluminum, Size 32 End Ports x Size 24 Side Ports	111	26
HA-0902P/01P-xx-1/2	Header Manifold, 90 Degree Aluminum, 1/8 NPT End Ports x 1/16 NPT Side Ports	107	
HA-0902P/02P-xx-1/2	Header Manifold, 90 Degree Aluminum, 1/8 NPT End Ports x 1/8 NPT Side Ports	107	
HA-0904P/02P-xx-1/2	Header Manifold, 90 Degree Aluminum, 1/4 NPT End Ports x 1/8 NPT Side Ports	107	
HA-0904x/04x-xx-1/2	Header Manifold, 90 Degree Aluminum, Size 4 End Ports x Size 4 Side Ports	108	
HA-0906x/02P-xx-1/2	Header Manifold, 90 Degree Aluminum, Size 6 End Ports x 1/8 NPT Side Ports	107	
HA-0906x/04x-xx-1/2	Header Manifold, 90 Degree Aluminum, Size 6 End Ports x Size 4 Side Ports	108	27
HA-0906x/06x-xx-1/2	Header Manifold, 90 Degree Aluminum, Size 6 End Ports x Size 6 Side Ports	109	
HA-0908x/04x-xx-1/2	Header Manifold, 90 Degree Aluminum, Size 8 End Ports x Size 4 Side Ports	108	



What is it, Where is it Index

Part Number	Description	Catalog Page	Price Page
HA-0908x/06x-xx-1/Z	Header Manifold, 90 Degree Aluminum, Size 8 End Ports x Size 6 Side Ports	109	27
HA-0908x/08x-xx-1/Z	Header Manifold, 90 Degree Aluminum, Size 8 End Ports x Size 8 Side Ports	110	
HA-0912x/06x-xx-1/Z	Header Manifold, 90 Degree Aluminum, Size 12 End Ports x Size 6 Side Ports	109	
HA-0912x/08x-xx-1/Z	Header Manifold, 90 Degree Aluminum, Size 12 End Ports x Size 8 Side Ports	110	27
HA-0912x/12x-xx-1/Z	Header Manifold, 90 Degree Aluminum, Size 12 End Ports x Size 12 Side Ports	110	
HA-0916x/08x-xx-1/Z	Header Manifold, 90 Degree Aluminum, Size 16 End Ports x Size 8 Side Ports	110	
HA-0916x/12x-xx-1/Z	Header Manifold, 90 Degree Aluminum, Size 16 End Ports x Size 12 Side Ports	110	27
HA-0916x/16x-xx-1/Z	Header Manifold, 90 Degree Aluminum, Size 16 End Ports x Size 16 Side Ports	111	
HA-0920x/12x-xx-1/Z	Header Manifold, 90 Degree Aluminum, Size 20 End Ports x Size 12 Side Ports	110	
HA-0920x/16x-xx-1/Z	Header Manifold, 90 Degree Aluminum, Size 20 End Ports x Size 16 Side Ports	111	27
HA-0920x/20x-xx-1/Z	Header Manifold, 90 Degree Aluminum, Size 20 End Ports x Size 20 Side Ports	111	
HA-0924x/16x-xx-1/Z	Header Manifold, 90 Degree Aluminum, Size 24 End Ports x Size 16 Side Ports	111	
HA-0924x/20x-xx-1/Z	Header Manifold, 90 Degree Aluminum, Size 24 End Ports x Size 20 Side Ports	111	27
HA-0924x/24x-xx-1/Z	Header Manifold, 90 Degree Aluminum, Size 24 End Ports x Size 24 Side Ports	111	
HA-0932x/24x-xx-1/Z	Header Manifold, 90 Degree Aluminum, Size 32 End Ports x Size 24 Side Ports	111	27
HA-1802P/01P-xx-1/Z	Header Manifold, 180 Degree Aluminum, 1/8 NPT End Ports x 1/16 NPT Side Ports	107	
HA-1802P/02P-xx-1/Z	Header Manifold, 180 Degree Aluminum, 1/8 NPT End Ports x 1/8 NPT Side Ports	107	
HA-1804P/02P-xx-1/Z	Header Manifold, 180 Degree Aluminum, 1/4 NPT End Ports x 1/8 NPT Side Ports	107	
HA-1804x/04x-xx-1/Z	Header Manifold, 180 Degree Aluminum, Size 4 End Ports x Size 4 Side Ports	108	
HA-1806x/02P-xx-1/Z	Header Manifold, 180 Degree Aluminum, Size 6 End Ports x 1/8 NPT Side Ports	107	
HA-1806x/04x-xx-1/Z	Header Manifold, 180 Degree Aluminum, Size 6 End Ports x Size 4 Side Ports	108	28
HA-1806x/06x-xx-1/Z	Header Manifold, 180 Degree Aluminum, Size 6 End Ports x Size 6 Side Ports	109	
HA-1808x/04x-xx-1/Z	Header Manifold, 180 Degree Aluminum, Size 8 End Ports x Size 4 Side Ports	108	
HA-1808x/06x-xx-1/Z	Header Manifold, 180 Degree Aluminum, Size 8 End Ports x Size 6 Side Ports	109	28
HA-1808x/08x-xx-1/Z	Header Manifold, 180 Degree Aluminum, Size 8 End Ports x Size 8 Side Ports	110	
HA-1812x/06x-xx-1/Z	Header Manifold, 180 Degree Aluminum, Size 12 End Ports x Size 6 Side Ports	109	
HA-1812x/08x-xx-1/Z	Header Manifold, 180 Degree Aluminum, Size 12 End Ports x Size 8 Side Ports	110	28
HA-1812x/12x-xx-1/Z	Header Manifold, 180 Degree Aluminum, Size 12 End Ports x Size 12 Side Ports	110	
HA-1816x/08x-xx-1/Z	Header Manifold, 180 Degree Aluminum, Size 16 End Ports x Size 8 Side Ports	110	
HA-1816x/12x-xx-1/Z	Header Manifold, 180 Degree Aluminum, Size 16 End Ports x Size 12 Side Ports	110	28
HA-1816x/16x-xx-1/Z	Header Manifold, 180 Degree Aluminum, Size 16 End Ports x Size 16 Side Ports	111	
HA-1820x/12x-xx-1/Z	Header Manifold, 180 Degree Aluminum, Size 20 End Ports x Size 12 Side Ports	110	
HA-1820x/16x-xx-1/Z	Header Manifold, 180 Degree Aluminum, Size 20 End Ports x Size 16 Side Ports	111	28
HA-1820x/20x-xx-1/Z	Header Manifold, 180 Degree Aluminum, Size 20 End Ports x Size 20 Side Ports	111	
HA-1824x/16x-xx-1/Z	Header Manifold, 180 Degree Aluminum, Size 24 End Ports x Size 16 Side Ports	111	
HA-1824x/20x-xx-1/Z	Header Manifold, 180 Degree Aluminum, Size 24 End Ports x Size 20 Side Ports	111	28
HA-1824x/24x-xx-1/Z	Header Manifold, 180 Degree Aluminum, Size 24 End Ports x Size 24 Side Ports	111	
HA-1832x/24x-xx-1/Z	Header Manifold, 180 Degree Aluminum, Size 32 End Ports x Size 24 Side Ports	111	28
HS-0002P/01P-xx-1/Z	Header Manifold, 0 Degree Steel, 1/8 NPT End Ports x 1/16 NPT Side Ports	107	26
HS-0002P/02P-xx-1/Z	Header Manifold, 0 Degree Steel, 1/8 NPT End Ports x 1/8 NPT Side Ports	107	
HS-0004P/02P-xx-1/Z	Header Manifold, 0 Degree Steel, 1/4 NPT End Ports x 1/8 NPT Side Ports	107	26
HS-0004x/04x-xx-1/Z	Header Manifold, 0 Degree Steel, Size 4 End Ports x Size 4 Side Ports	108	
HS-0006x/02P-xx-1/Z	Header Manifold, 0 Degree Steel, Size 6 End Ports x 1/8 NPT Side Ports	107	
HS-0006x/04x-xx-1/Z	Header Manifold, 0 Degree Steel, Size 6 End Ports x Size 4 Side Ports	108	26
HS-0006x/06x-xx-1/Z	Header Manifold, 0 Degree Steel, Size 6 End Ports x Size 6 Side Ports	109	
HS-0008x/04x-xx-1/Z	Header Manifold, 0 Degree Steel, Size 8 End Ports x Size 4 Side Ports	108	
HS-0008x/06x-xx-1/Z	Header Manifold, 0 Degree Steel, Size 8 End Ports x Size 6 Side Ports	109	26
HS-0008x/08x-xx-1/Z	Header Manifold, 0 Degree Steel, Size 8 End Ports x Size 8 Side Ports	110	
HS-0012x/06x-xx-1/Z	Header Manifold, 0 Degree Steel, Size 12 End Ports x Size 6 Side Ports	109	
HS-0012x/08x-xx-1/Z	Header Manifold, 0 Degree Steel, Size 12 End Ports x Size 8 Side Ports	110	26
HS-0012x/12x-xx-1/Z	Header Manifold, 0 Degree Steel, Size 12 End Ports x Size 12 Side Ports	110	
HS-0016x/08x-xx-1/Z	Header Manifold, 0 Degree Steel, Size 16 End Ports x Size 8 Side Ports	110	
HS-0016x/12x-xx-1/Z	Header Manifold, 0 Degree Steel, Size 16 End Ports x Size 12 Side Ports	110	26
HS-0016x/16x-xx-1/Z	Header Manifold, 0 Degree Steel, Size 16 End Ports x Size 16 Side Ports	111	
HS-0020x/12x-xx-1/Z	Header Manifold, 0 Degree Steel, Size 20 End Ports x Size 12 Side Ports	110	
HS-0020x/16x-xx-1/Z	Header Manifold, 0 Degree Steel, Size 20 End Ports x Size 16 Side Ports	111	26
HS-0020x/20x-xx-1/Z	Header Manifold, 0 Degree Steel, Size 20 End Ports x Size 20 Side Ports	111	
HS-0024x/16x-xx-1/Z	Header Manifold, 0 Degree Steel, Size 24 End Ports x Size 16 Side Ports	111	
HS-0024x/20x-xx-1/Z	Header Manifold, 0 Degree Steel, Size 24 End Ports x Size 20 Side Ports	111	26
HS-0024x/24x-xx-1/Z	Header Manifold, 0 Degree Steel, Size 24 End Ports x Size 24 Side Ports	111	
HS-0032x/24x-xx-1/Z	Header Manifold, 0 Degree Steel, Size 32 End Ports x Size 24 Side Ports	111	26
HS-0902P/01P-xx-1/Z	Header Manifold, 90 Degree Steel, 1/8 NPT End Ports x 1/16 NPT Side Ports	107	

What is it, Where is it Index



Part Number	Description	Catalog Page	Price Page
HS-0902P/02P-xx-1/Z	Header Manifold, 90 Degree Steel, 1/8 NPT End Ports x 1/8 NPT Side Ports	107	
HS-0904P/02P-xx-1/Z	Header Manifold, 90 Degree Steel, 1/4 NPT End Ports x 1/8 NPT Side Ports	107	
HS-0904x/04x-xx-1/Z	Header Manifold, 90 Degree Steel, Size 4 End Ports x Size 4 Side Ports	108	
HS-0906x/02P-xx-1/Z	Header Manifold, 90 Degree Steel, Size 6 End Ports x 1/8 NPT Side Ports	107	
HS-0906x/04x-xx-1/Z	Header Manifold, 90 Degree Steel, Size 6 End Ports x Size 4 Side Ports	108	27
HS-0906x/06x-xx-1/Z	Header Manifold, 90 Degree Steel, Size 6 End Ports x Size 6 Side Ports	109	
HS-0908x/04x-xx-1/Z	Header Manifold, 90 Degree Steel, Size 8 End Ports x Size 4 Side Ports	108	
HS-0908x/06x-xx-1/Z	Header Manifold, 90 Degree Steel, Size 8 End Ports x Size 6 Side Ports	109	27
HS-0908x/08x-xx-1/Z	Header Manifold, 90 Degree Steel, Size 8 End Ports x Size 8 Side Ports	110	
HS-0912x/06x-xx-1/Z	Header Manifold, 90 Degree Steel, Size 12 End Ports x Size 6 Side Ports	109	
HS-0912x/08x-xx-1/Z	Header Manifold, 90 Degree Steel, Size 12 End Ports x Size 8 Side Ports	110	27
HS-0912x/12x-xx-1/Z	Header Manifold, 90 Degree Steel, Size 12 End Ports x Size 12 Side Ports	110	
HS-0916x/08x-xx-1/Z	Header Manifold, 90 Degree Steel, Size 16 End Ports x Size 8 Side Ports	110	
HS-0916x/12x-xx-1/Z	Header Manifold, 90 Degree Steel, Size 16 End Ports x Size 12 Side Ports	110	27
HS-0916x/16x-xx-1/Z	Header Manifold, 90 Degree Steel, Size 16 End Ports x Size 16 Side Ports	111	
HS-0920x/12x-xx-1/Z	Header Manifold, 90 Degree Steel, Size 20 End Ports x Size 12 Side Ports	110	
HS-0920x/16x-xx-1/Z	Header Manifold, 90 Degree Steel, Size 20 End Ports x Size 16 Side Ports	111	27
HS-0920x/20x-xx-1/Z	Header Manifold, 90 Degree Steel, Size 20 End Ports x Size 20 Side Ports	111	
HS-0924x/16x-xx-1/Z	Header Manifold, 90 Degree Steel, Size 24 End Ports x Size 16 Side Ports	111	
HS-0924x/20x-xx-1/Z	Header Manifold, 90 Degree Steel, Size 24 End Ports x Size 20 Side Ports	111	27
HS-0924x/24x-xx-1/Z	Header Manifold, 90 Degree Steel, Size 24 End Ports x Size 24 Side Ports	111	
HS-0932x/24x-xx-1/Z	Header Manifold, 90 Degree Steel, Size 32 End Ports x Size 24 Side Ports	111	27
HS-1802P/01P-xx-1/Z	Header Manifold, 180 Degree Steel, 1/8 NPT End Ports x 1/16 NPT Side Ports	107	
HS-1802P/02P-xx-1/Z	Header Manifold, 180 Degree Steel, 1/8 NPT End Ports x 1/8 NPT Side Ports	107	
HS-1804P/02P-xx-1/Z	Header Manifold, 180 Degree Steel, 1/4 NPT End Ports x 1/8 NPT Side Ports	107	
HS-1804x/04x-xx-1/Z	Header Manifold, 180 Degree Steel, Size 4 End Ports x Size 4 Side Ports	108	
HS-1806x/02P-xx-1/Z	Header Manifold, 180 Degree Steel, Size 6 End Ports x 1/8 NPT Side Ports	107	
HS-1806x/04x-xx-1/Z	Header Manifold, 180 Degree Steel, Size 6 End Ports x Size 4 Side Ports	108	28
HS-1806x/06x-xx-1/Z	Header Manifold, 180 Degree Steel, Size 6 End Ports x Size 6 Side Ports	109	
HS-1808x/04x-xx-1/Z	Header Manifold, 180 Degree Steel, Size 8 End Ports x Size 4 Side Ports	108	
HS-1808x/06x-xx-1/Z	Header Manifold, 180 Degree Steel, Size 8 End Ports x Size 6 Side Ports	109	28
HS-1808x/08x-xx-1/Z	Header Manifold, 180 Degree Steel, Size 8 End Ports x Size 8 Side Ports	110	
HS-1812x/06x-xx-1/Z	Header Manifold, 180 Degree Steel, Size 12 End Ports x Size 6 Side Ports	109	
HS-1812x/08x-xx-1/Z	Header Manifold, 180 Degree Steel, Size 12 End Ports x Size 8 Side Ports	110	28
HS-1812x/12x-xx-1/Z	Header Manifold, 180 Degree Steel, Size 12 End Ports x Size 12 Side Ports	110	
HS-1816x/08x-xx-1/Z	Header Manifold, 180 Degree Steel, Size 16 End Ports x Size 8 Side Ports	110	
HS-1816x/12x-xx-1/Z	Header Manifold, 180 Degree Steel, Size 16 End Ports x Size 12 Side Ports	110	28
HS-1816x/16x-xx-1/Z	Header Manifold, 180 Degree Steel, Size 16 End Ports x Size 16 Side Ports	111	
HS-1820x/12x-xx-1/Z	Header Manifold, 180 Degree Steel, Size 20 End Ports x Size 12 Side Ports	110	
HS-1820x/16x-xx-1/Z	Header Manifold, 180 Degree Steel, Size 20 End Ports x Size 16 Side Ports	111	28
HS-1820x/20x-xx-1/Z	Header Manifold, 180 Degree Steel, Size 20 End Ports x Size 20 Side Ports	111	
HS-1824x/16x-xx-1/Z	Header Manifold, 180 Degree Steel, Size 24 End Ports x Size 16 Side Ports	111	
HS-1824x/20x-xx-1/Z	Header Manifold, 180 Degree Steel, Size 24 End Ports x Size 20 Side Ports	111	28
HS-1824x/24x-xx-1/Z	Header Manifold, 180 Degree Steel, Size 24 End Ports x Size 24 Side Ports	111	
HS-1832x/24x-xx-1/Z	Header Manifold, 180 Degree Steel, Size 32 End Ports x Size 24 Side Ports	111	28
IC-A05P11	D05 Aluminum IC Circuit Tank Line Feed Control Manifold- NPT	73	20
IC-A05P31	D05 Aluminum IC Solenoid Activated Regeneration Module- NPT	75	20
IC-A05P41	D05 Aluminum IC Circuit Feed Control Cylinder Port Meter Out Manifold- NPT	74	20
IC-A05P42	D05 Aluminum IC Circuit Feed Control Cylinder Port Meter In Manifold- NPT	74	20
IC-A05S11	D05 Aluminum IC Circuit Tank Line Feed Control Manifold- SAE	73	20
IC-A05S31	D05 Aluminum IC Solenoid Activated Regeneration Module- SAE	75	20
IC-A05S41	D05 Aluminum IC Circuit Feed Control Cylinder Port Meter Out Manifold- SAE	74	20
IC-A05S42	D05 Aluminum IC Circuit Feed Control Cylinder Port Meter In Manifold- SAE	74	20
IC-A08P21	D08 Aluminum IC Hi-Lo Pressure Operated Unloading Manifold- NPT		20
IC-A08S21	D08 Aluminum IC Hi-Lo Pressure Operated Unloading Manifold- SAE		20
IC-S05P11	D05 Steel IC Circuit Tank Line Feed Control Manifold-NPT	73	20
IC-S05P31	D05 Steel IC Solenoid Activated Regeneration Module-NPT	75	20
IC-S05P41	D05 Steel IC Circuit Feed Control Cylinder Port Meter Out Manifold-NPT	74	20
IC-S05P42	D05 Steel IC Circuit Feed Control Cylinder Port Meter In Manifold-NPT	74	20
IC-S05S11	D05 Steel IC Circuit Tank Line Feed Control Manifold-SAE	73	20
IC-S05S31	D05 Steel IC Solenoid Activated Regeneration Module-SAE	75	20
IC-S05S41	D05 Steel IC Circuit Feed Control Cylinder Port Meter Out Manifold-SAE	74	20



What is it, Where is it Index

Part Number	Description	Catalog Page	Price Page
IC-S05S42	D05 Steel IC Circuit Feed Control Cylinder Port Meter In Manifold-SAE	74	20
IC-S08P21	D08 Steel IC Hi-Lo Pressure Operated Unloading Manifold-NPT		20
IC-S08S21	D08 Steel IC Hi-Lo Pressure Operated Unloading Manifold-SAE		20
IP-AP03-0	Isolation Plug for D03 Aluminum Old Style Manifold P or T Ports	196	24
IP-AP03-1	Isolation Plug for D03 Aluminum High Flow Manifold P or T Ports	196	24
IP-AP05-0	Isolation Plug for D05 Aluminum Standard Flow Manifold P Port	196	24
IP-AP05-1	Isolation Plug for D03 Aluminum Standard Flow Retro Design Manifold P Port	196	24
IP-AP08-0	Isolation Plug for D05 Aluminum High Flow Manifold P Port	196	24
IP-AT05-0	Isolation Plug for D05 Aluminum Standard Flow Manifold T Port	196	24
IP-AT05-1	Isolation Plug for D05 Aluminum High Flow Manifold T Port	196	24
IP-AT08-0	Isolation Plug for D08 Aluminum Standard Flow Manifold T Port	196	24
IP-SP03-0	Isolation Plug for D03 Steel Old Style Manifold P or T Ports	196	24
IP-SP03-1	Isolation Plug for D03 Steel High Flow Manifold P or T Ports	196	24
IP-SP05-0	Isolation Plug for D03 Steel High Flow Retro Design Manifold P Port	196	24
IP-SP08-0	Isolation Plug for D03 Steel High Flow Retro Design Manifold T Port	196	24
IP-SP08-1	Isolation Plug for D03 Aluminum High Flow Retro Design Manifold T Port	196	24
IP-ST05-0	Isolation Plug for D05 Steel Standard Flow Manifold T Port	196	24
IP-ST05-1	Isolation Plug for D05 Steel High Flow Manifold T Port	196	24
IP-ST08-0	Isolation Plug for D08 Aluminum High Flow Retro Design Manifold P Port	196	24
JA-09000/01P-xx-1/Z	Junction Manifold, 90 Degree Aluminum, 1/16 NPT Side Ports	113	
JA-09000/02P-xx-1/Z	Junction Manifold, 90 Degree Aluminum, 1/8 NPT Side Ports	113	
JA-09000/04x-xx-1/Z	Junction Manifold, 90 Degree Aluminum, Size 4 Side Ports	113	29
JA-09000/06x-xx-1/Z	Junction Manifold, 90 Degree Aluminum, Size 6 Side Ports	114	29
JA-09000/08x-xx-1/Z	Junction Manifold, 90 Degree Aluminum, Size 8 Side Ports	114	29
JA-09000/12x-xx-1/Z	Junction Manifold, 90 Degree Aluminum, Size 12 Side Ports	114	29
JA-09000/16x-xx-1/Z	Junction Manifold, 90 Degree Aluminum, Size 16 Side Ports	114	29
JA-09000/20x-xx-1/Z	Junction Manifold, 90 Degree Aluminum, Size 20 Side Ports	114	29
JA-09000/24x-xx-1/Z	Junction Manifold, 90 Degree Aluminum, Size 24 Side Ports	114	29
JA-18000/01P-xx-1/Z	Junction Manifold, 180 Degree Aluminum, 1/16 NPT Side Ports	113	
JA-18000/02P-xx-1/Z	Junction Manifold, 180 Degree Aluminum, 1/8 NPT Side Ports	113	
JA-18000/04x-xx-1/Z	Junction Manifold, 180 Degree Aluminum, Size 4 Side Ports	113	30
JA-18000/06x-xx-1/Z	Junction Manifold, 180 Degree Aluminum, Size 6 Side Ports	114	30
JA-18000/08x-xx-1/Z	Junction Manifold, 180 Degree Aluminum, Size 8 Side Ports	114	30
JA-18000/12x-xx-1/Z	Junction Manifold, 180 Degree Aluminum, Size 12 Side Ports	114	30
JA-18000/16x-xx-1/Z	Junction Manifold, 180 Degree Aluminum, Size 16 Side Ports	114	30
JA-18000/20x-xx-1/Z	Junction Manifold, 180 Degree Aluminum, Size 20 Side Ports	114	30
JA-18000/24x-xx-1/Z	Junction Manifold, 180 Degree Aluminum, Size 24 Side Ports	114	30
JA-27000/01P-xx-1/Z	Junction Manifold, 270 Degree Aluminum, 1/16 NPT Side Ports	113	
JA-27000/02P-xx-1/Z	Junction Manifold, 270 Degree Aluminum, 1/8 NPT Side Ports	113	
JA-27000/04x-xx-1/Z	Junction Manifold, 270 Degree Aluminum, Size 4 Side Ports	113	31
JA-27000/06x-xx-1/Z	Junction Manifold, 270 Degree Aluminum, Size 6 Side Ports	114	31
JA-27000/08x-xx-1/Z	Junction Manifold, 270 Degree Aluminum, Size 8 Side Ports	114	31
JA-27000/12x-xx-1/Z	Junction Manifold, 270 Degree Aluminum, Size 12 Side Ports	114	31
JA-27000/16x-xx-1/Z	Junction Manifold, 270 Degree Aluminum, Size 16 Side Ports	114	31
JA-27000/20x-xx-1/Z	Junction Manifold, 270 Degree Aluminum, Size 20 Side Ports	114	31
JA-27000/24x-xx-1/Z	Junction Manifold, 270 Degree Aluminum, Size 24 Side Ports	114	31
JS-09000/01P-xx-1/Z	Junction Manifold, 90 Degree Steel, 1/16 NPT Side Ports	113	
JS-09000/02P-xx-1/Z	Junction Manifold, 90 Degree Steel, 1/8 NPT Side Ports	113	
JS-09000/04x-xx-1/Z	Junction Manifold, 90 Degree Steel, Size 4 Side Ports	113	29
JS-09000/06x-xx-1/Z	Junction Manifold, 90 Degree Steel, Size 6 Side Ports	114	29
JS-09000/08x-xx-1/Z	Junction Manifold, 90 Degree Steel, Size 8 Side Ports	114	29
JS-09000/12x-xx-1/Z	Junction Manifold, 90 Degree Steel, Size 12 Side Ports	114	29
JS-09000/16x-xx-1/Z	Junction Manifold, 90 Degree Steel, Size 16 Side Ports	114	29
JS-09000/20x-xx-1/Z	Junction Manifold, 90 Degree Steel, Size 20 Side Ports	114	29
JS-09000/24x-xx-1/Z	Junction Manifold, 90 Degree Steel, Size 24 Side Ports	114	29
JS-18000/01P-xx-1/Z	Junction Manifold, 180 Degree Steel, 1/16 NPT Side Ports	113	
JS-18000/02P-xx-1/Z	Junction Manifold, 180 Degree Steel, 1/8 NPT Side Ports	113	
JS-18000/04x-xx-1/Z	Junction Manifold, 180 Degree Steel, Size 4 Side Ports	113	30
JS-18000/06x-xx-1/Z	Junction Manifold, 180 Degree Steel, Size 6 Side Ports	114	30
JS-18000/08x-xx-1/Z	Junction Manifold, 180 Degree Steel, Size 8 Side Ports	114	30
JS-18000/12x-xx-1/Z	Junction Manifold, 180 Degree Steel, Size 12 Side Ports	114	30
JS-18000/16x-xx-1/Z	Junction Manifold, 180 Degree Steel, Size 16 Side Ports	114	30

What is it, Where is it Index



Part Number	Description	Catalog Page	Price Page
JS-18000/20x-xx-1/Z	Junction Manifold, 180 Degree Steel, Size 20 Side Ports	114	30
JS-18000/24x-xx-1/Z	Junction Manifold, 180 Degree Steel, Size 24 Side Ports	114	30
JS-27000/01P-xx-1/Z	Junction Manifold, 270 Degree Steel, 1/16 NPT Side Ports	113	
JS-27000/02P-xx-1/Z	Junction Manifold, 270 Degree Steel, 1/8 NPT Side Ports	113	
JS-27000/04x-xx-1/Z	Junction Manifold, 270 Degree Steel, Size 4 Side Ports	113	31
JS-27000/06x-xx-1/Z	Junction Manifold, 270 Degree Steel, Size 6 Side Ports	114	31
JS-27000/08x-xx-1/Z	Junction Manifold, 270 Degree Steel, Size 8 Side Ports	114	31
JS-27000/12x-xx-1/Z	Junction Manifold, 270 Degree Steel, Size 12 Side Ports	114	31
JS-27000/16x-xx-1/Z	Junction Manifold, 270 Degree Steel, Size 16 Side Ports	114	31
JS-27000/20x-xx-1/Z	Junction Manifold, 270 Degree Steel, Size 20 Side Ports	114	31
JS-27000/24x-xx-1/Z	Junction Manifold, 270 Degree Steel, Size 24 Side Ports	114	31
LFPG-208-xxx-04N/BS	Liquid Filled Pressure Gauge, 2 1/2" Dial, 1/4" NPT Bottom Stem, with xxx Dial Range	166	42
LFPG-208-xxx-04N/RS	Liquid Filled Pressure Gauge, 2 1/2" Dial, 1/4" NPT Rear Stem, with xxx Dial Range	167	42
LFPG-400-xxx-04N/BS	Liquid Filled Pressure Gauge, 4" Dial, 1/4" NPT Bottom Stem, with xxx Dial Range	166	42
LFPG-400-xxx-04N/RS	Liquid Filled Pressure Gauge, 4" Dial, 1/4" NPT Rear Stem, with xxx Dial Range	167	42
LFPG-400-xxx-08N/BS	Liquid Filled Pressure Gauge, 4" Dial, 1/2" NPT Bottom Stem, with xxx Dial Range	166	42
M010-01024	M Series, Size 10 Rod End Coupler, 5/16-24 Thread	181	45
M010-01224	M Series, Size 10 Rod End Coupler, 3/8-24 Thread	181	45
M015-01420	M Series, Size 15 Rod End Coupler, 7/16-20 Thread	181	45
M015-01620	M Series, Size 15 Rod End Coupler, 1/2-20 Thread	181	45
M020-02018	M Series, Size 20 Rod End Coupler, 5/8-18 Thread	181	45
M020-02416	M Series, Size 20 Rod End Coupler, 3/4-16 Thread	181	45
M020-02814	M Series, Size 20 Rod End Coupler, 7/8-14 Thread	181	45
M030-10014	M Series, Size 30 Rod End Coupler, 1-14 Thread	181	45
M040-10812	M Series, Size 40 Rod End Coupler, 1 1/2-12 Thread	181	45
M050-11612	M Series, Size 50 Rod End Coupler, 1 1/2-12 Thread	181	45
M050-12412	M Series, Size 50 Rod End Coupler, 1 3/4-12 Thread	181	45
M056VG	NEMA 056 Vertical Mount Gasket	27	6
M056xx100M	NEMA 056 Motor Mount to Metric 100mm Pump	20	4
M056xx100MV	NEMA 056 Vertical Motor Mount to Metric 100mm Pump	28	6
M056xx2A	NEMA 056 Motor Mount to SAE A Pump	20	4
M056xx2AA	NEMA 056 Motor Mount to SAE 2AA Pump	20	4
M056xx2AAV	NEMA 056 Vertical Motor Mount to SAE 2AA Pump	28	6
M056xx2AV	NEMA 056 Vertical Motor Mount to SAE A Pump	28	6
M056xx2B	NEMA 056 Motor Mount to SAE B Pump	20	4
M056xx2BV	NEMA 056 Vertical Motor Mount to SAE B Pump	28	6
M056xx4F	NEMA 056 Motor Mount to USA4F17 Pump	20	4
M056xx4FV	NEMA 056 Vertical Motor Mount to USA4F17 Pump	28	6
M056xx63M	NEMA 056 Motor Mount to Metric 63mm Pump	20	4
M056xx63MS	NEMA 056 Motor Mount to Metric 63mm Special Pump	20	4
M056xx63MSV	NEMA 056 Vertical Motor Mount to Metric 63mm Special Pump	28	6
M056xx63MV	NEMA 056 Vertical Motor Mount to Metric 63mm Pump	28	6
M056xx80M	NEMA 056 Motor Mount to Metric 80mm Pump	20	4
M056xx80MS	NEMA 056 Motor Mount to Metric 80mm Special Pump	20	4
M056xx80MSV	NEMA 056 Vertical Motor Mount to Metric 80mm Special Pump	28	6
M056xx80MV	NEMA 056 Vertical Motor Mount to Metric 80mm Pump	28	6
M056xxxx45	NEMA 056 Motor Mount w/pump holes rotated 45 degrees		10
M056xxxxM8	NEMA 056 Motor Mount w/4 additional holes on motor end to allow rotating mount +/-45 degrees		10
M060-12812	M Series, Size 60 Rod End Coupler, 1 7/8-12 Thread	181	45
M060-20012	M Series, Size 60 Rod End Coupler, 2-12 Thread	181	45
M070-20812	M Series, Size 70 Rod End Coupler, 2 1/4-12 Thread	181	45
M080-21612	M Series, Size 80 Rod End Coupler, 2 1/2-12 Thread	181	45
M080-22412	M Series, Size 80 Rod End Coupler, 2 3/4-12 Thread	181	45
M080-30012	M Series, Size 80 Rod End Coupler, 3-12 Thread	181	45
M100-30812	M Series, Size 100 Rod End Coupler, 3 1/4-12 Thread	181	45
M100Axxxx	Model 100 Hub Spline Bore	7	2
M100AxxxxC	Model 100 Hub Spline Bore w/Clamp	7	2
M100Bxxxx	Model 100 Hub Steel Bushed Spline Bore	7	2
M100BxxxxC	Model 100 Hub Steel Bushed Spline Bore w/Clamp	7	2
M100Mxxxx	Model 100 Hub Metric Bore & Key	5	2
M100R	Model 100 Hub No Bore	5	1
M100xxxx	Model 100 Hub Bored & Keyed	5	1



What is it, Where is it Index

Part Number	Description	Catalog Page	Price Page
M100xxxxDSSxx	Model 100 Hub Bored & Keyed w/Double Set Screws	2	2
M130MLxx100M	IEC Metric 130ML Motor Mount to Metric 100mm Pump	23	5
M130MLxx2A	IEC Metric 130ML Motor Mount to SAE A Pump	23	5
M130MLxx2AA	IEC Metric 130ML Motor Mount to SAE 2AA Pump	23	5
M130MLxx2B	IEC Metric 130ML Motor Mount to SAE B Pump	23	5
M130MLxx4F	IEC Metric 130ML Motor Mount to USA4F17 Pump	23	5
M130MLxx63M	IEC Metric 130ML Motor Mount to Metric 63mm Pump	23	5
M130MLxx63MS	IEC Metric 130ML Motor Mount to Metric 63mm SpecialPump	23	5
M130MLxx80M	IEC Metric 130ML Motor Mount to Metric 80mm Pump	23	5
M130MLxx80MS	IEC Metric 130ML Motor Mount to Metric 80mm Special Pump	23	5
M140-40812	M Series, Size 140 Rod End Coupler, 4 1/4-12 Thread	181	45
M170xx	Model 100 Insert	8	1
M180MLxx100M	IEC Metric 180ML Motor Mount to Metric 100mm Pump	24	5
M180MLxx125M	IEC Metric 180ML Motor Mount to Metric 125mm Pump	24	5
M180MLxx2A	IEC Metric 180ML Motor Mount to SAE A Pump	24	5
M180MLxx2AA	IEC Metric 180ML Motor Mount to SAE 2AA Pump	24	5
M180MLxx2B	IEC Metric 180ML Motor Mount to SAE B Pump	24	5
M180MLxx2C	IEC Metric 180ML Motor Mount to SAE C Pump	24	5
M180MLxx4F	IEC Metric 180ML Motor Mount to USA4F17 Pump	24	5
M180MLxx63M	IEC Metric 180ML Motor Mount to Metric 63mm Pump	24	5
M180MLxx63MS	IEC Metric 180ML Motor Mount to Metric 63mm SpecialPump	24	5
M180MLxx80M	IEC Metric 180ML Motor Mount to Metric 80mm Pump	24	5
M180MLxx80MS	IEC Metric 180ML Motor Mount to Metric 80mm Special Pump	24	5
M182AVG	NEMA 182-A Vertical Mount Gasket	28	6
M182BVG	NEMA 182-B Vertical Mount Gasket	28	6
M182xx100M	NEMA 182 Motor Mount to Metric 100mm Pump	21	4
M182xx100MV	NEMA 182 Vertical Motor Mount to Metric 100mm Pump	29	6
M182xx125M	NEMA 182 Motor Mount to Metric 125mm Pump	21	4
M182xx125MV	NEMA 182 Vertical Motor Mount to Metric 125mm Pump	29	6
M182xx2A	NEMA 182 Motor Mount to SAE A Pump	21	4
M182xx2AA	NEMA 182 Motor Mount to SAE 2AA Pump	21	4
M182xx2AAV	NEMA 182 Vertical Motor Mount to SAE 2AA Pump	29	6
M182xx2AV	NEMA 182 Vertical Motor Mount to SAE A Pump	29	6
M182xx2B	NEMA 182 Motor Mount to SAE B Pump	21	4
M182xx2BV	NEMA 182 Vertical Motor Mount to SAE B Pump	29	6
M182xx2C	NEMA 182 Motor Mount to SAE C Pump	21	4
M182xx2CV	NEMA 182 Vertical Motor Mount to SAE C Pump	29	6
M182xx4F	NEMA 182 Motor Mount to USA4F17 Pump	21	4
M182xx4FV	NEMA 182 Vertical Motor Mount to USA4F17 Pump	29	6
M182xx63M	NEMA 182 Motor Mount to Metric 63mm Pump	21	4
M182xx63MS	NEMA 182 Motor Mount to Metric 63mm Special Pump	21	4
M182xx63MSV	NEMA 182 Vertical Motor Mount to Metric 63mm Pump	29	6
M182xx63MV	NEMA 182 Vertical Motor Mount to Metric 63mm Special Pump	29	6
M182xx80M	NEMA 182 Motor Mount to Metric 80mm Pump	21	4
M182xx80MS	NEMA 182 Motor Mount to Metric 80mm Special Pump	21	4
M182xx80MSV	NEMA 182 Vertical Motor Mount to Metric 80mm Special Pump	29	6
M182xx80MV	NEMA 182 Vertical Motor Mount to Metric 80mm Pump	29	6
M182xxxx45	NEMA 182 Motor Mount w/pump holes rotated 45 degrees		10
M182xxxxM8	NEMA 182 Motor Mount w/4 additional holes on motor end to allow rotating mount +/-45 degrees		10
M182xxxxVW	NEMA 182 Special Vertical Motor Mount for WorldWide Corp Motor		10
M200Axxxx	Model 200 Hub Spline Bore	7	2
M200AxxxxC	Model 200 Hub Spline Bore w/Clamp	7	2
M200Bxxxx	Model 200 Hub Steel Bushed Spline Bore	7	2
M200BxxxxC	Model 200 Hub Steel Bushed Spline Bore w/Clamp	7	2
M200Mxxxx	Model 200 Hub Metric Bore & Key	5	2
M200R	Model 200 Hub No Bore	5	1
M200xxxx	Model 200 Hub Bored & Keyed	5	1
M200xxxxDSSxx	Model 200 Hub Bored & Keyed w/Double Set Screws	2	2
M230MLxx100M	IEC Metric 230ML Motor Mount to Metric 100mm Pump	5	
M230MLxx125M	IEC Metric 230ML Motor Mount to Metric 125mm Pump	5	
M230MLxx2A	IEC Metric 230ML Motor Mount to SAE A Pump	5	
M230MLxx2AA	IEC Metric 230ML Motor Mount to SAE 2AA Pump	5	

What is it, Where is it Index



Part Number	Description	Catalog Page	Price Page
M230MLxx2B	IEC Metric 230ML Motor Mount to SAE B Pump	5	
M230MLxx2C	IEC Metric 230ML Motor Mount to SAE C Pump	5	
M230MLxx4F	IEC Metric 230ML Motor Mount to USA4F17 Pump	5	
M230MLxx63M	IEC Metric 230ML Motor Mount to Metric 63mm Pump	5	
M230MLxx63MS	IEC Metric 230ML Motor Mount to Metric 63mm Special Pump	5	
M230MLxx80M	IEC Metric 230ML Motor Mount to Metric 80mm Pump	5	
M230MLxx80MS	IEC Metric 230ML Motor Mount to Metric 80mm Special Pump	5	
M250MLxx100M	IEC Metric 250ML Motor Mount to Metric 100mm Pump	5	
M250MLxx125M	IEC Metric 250ML Motor Mount to Metric 125mm Pump	5	
M250MLxx160M	IEC Metric 250ML Motor Mount to Metric 160mm Pump	5	
M250MLxx180M	IEC Metric 250ML Motor Mount to Metric 180mm Pump	5	
M250MLxx2B	IEC Metric 250ML Motor Mount to SAE B Pump	5	
M250MLxx2C	IEC Metric 250ML Motor Mount to SAE C Pump	5	
M250MLxx2D	IEC Metric 250ML Motor Mount to SAE D Pump	5	
M270xx	Model 200 Insert	8	1
M284xx100M	NEMA 284 Motor Mount to Metric 100mm Pump	22	4
M284xx125M	NEMA 284 Motor Mount to Metric 125mm Pump	22	4
M284xx2A	NEMA 284 Motor Mount to SAE A Pump	22	4
M284xx2B	NEMA 284 Motor Mount to SAE B Pump	22	4
M284xx2C	NEMA 284 Motor Mount to SAE C Pump	22	4
M284xx63M	NEMA 284 Motor Mount to Metric 63mm Pump	22	4
M284xx63MS	NEMA 284 Motor Mount to Metric 63mm Special Pump	22	4
M284xx80M	NEMA 284 Motor Mount to Metric 80mm Pump	22	4
M284xx80MS	NEMA 284 Motor Mount to Metric 80mm Special Pump	22	4
M284xxxx45	Steel NEMA 284 Motor Mount w/pump holes rotated 45 degrees		10
M284xxxxM8	Steel NEMA 284 Motor Mount w/4 additional holes on motor end to allow rotating mount +/-45 degrees		10
M300Axxxx	Model 300 Hub Spline Bore	7	2
M300AxxxxC	Model 300 Hub Spline Bore w/Clamp	7	2
M300Bxxxx	Model 300 Hub Steel Bushed Spline Bore	7	2
M300BxxxxC	Model 300 Hub Steel Bushed Spline Bore w/Clamp	7	2
M300Mxxxx	Model 300 Hub Metric Bore & Key	5	2
M300R	Model 300 Hub No Bore	5	1
M300xxxxx	Model 300 Hub Bored & Keyed	5	1
M300xxxxxDSSxx	Model 300 Hub Bored & Keyed w/Double Set Screws	2	2
M324xx100M	NEMA 324 Motor Mount to Metric 100mm Pump	22	4
M324xx125M	NEMA 324 Motor Mount to Metric 125mm Pump	22	4
M324xx160M	NEMA 324 Motor Mount to Metric 160mm Pump	22	4
M324xx180M	NEMA 324 Motor Mount to Metric 180mm Pump	22	4
M324xx2B	NEMA 324 Motor Mount to SAE B Pump	22	4
M324xx2C	NEMA 324 Motor Mount to SAE C Pump	22	4
M324xx2D	NEMA 324 Motor Mount to SAE D Pump	22	4
M324xxPVR50	NEMA 324 Motor Mount to PVR50 Pump	22	4
M324xxxx45	Steel NEMA 324 Motor Mount w/pump holes rotated 45 degrees		10
M324xxxxM8	Steel NEMA 324 Motor Mount w/4 additional holes on motor end to allow rotating mount +/-45 degrees		10
M370xx	Model 300 Insert	8	1
M400Axxxx	Model 400 Hub Spline Bore	7	2
M400AxxxxC	Model 400 Hub Spline Bore w/Clamp	7	2
M400Bxxxx	Model 400 Hub Steel Bushed Spline Bore	7	2
M400BxxxxC	Model 400 Hub Steel Bushed Spline Bore w/Clamp	7	2
M400Mxxxx	Model 400 Hub Metric Bore & Key	5	2
M400R	Model 400 Hub No Bore	5	1
M400xxxxx	Model 400 Hub Bored & Keyed	5	1
M400xxxxxDSSxx	Model 400 Hub Bored & Keyed w/Double Set Screws	2	2
M444882C	NEMA 444 Motor Mount to SAE C Pump	22	4
M444882D	NEMA 444 Motor Mount to SAE D Pump	22	4
M444882E	NEMA 444 Motor Mount to SAE E Pump	22	4
M444xxxx45	Steel NEMA 444 Motor Mount w/pump holes rotated 45 degrees		10
M444xxxxM8	Steel NEMA 444 Motor Mount w/4 additional holes on motor end to allow rotating mount +/-45 degrees		10
M470xx	Model 400 Insert	8	1
M500Axxxx	Model 500 Hub Spline Bore	7	2
M500AxxxxC	Model 500 Hub Spline Bore w/Clamp	7	2
M500Bxxxx	Model 500 Hub Steel Bushed Spline Bore	7	2



What is it, Where is it Index

Part Number	Description	Catalog Page	Price Page
M500BxxxxC	Model 500 Hub Steel Bushed Spline Bore w/Clamp	7	2
M500Mxxxx	Model 500 Hub Metric Bore & Key	5	2
M500R	Model 500 Hub No Bore	5	1
M500xxxxx	Model 500 Hub Bored & Keyed	5	1
M500xxxxxDSSxx	Model 500 Hub Bored & Keyed w/Double Set Screws	2	2
M570xx	Model 500 Insert	8	1
M600Axxxx	Model 600 Hub Spline Bore	7	2
M600AxxxxC	Model 600 Hub Spline Bore w/Clamp	7	2
M600Bxxxx	Model 600 Hub Steel Bushed Spline Bore	7	2
M600BxxxxC	Model 600 Hub Steel Bushed Spline Bore w/Clamp	7	2
M600Mxxxx	Model 600 Hub Metric Bore & Key	5	2
M600R	Model 600 Hub No Bore	5	1
M600xxxxx	Model 600 Hub Bored & Keyed	5	1
M600xxxxxDSSxx	Model 600 Hub Bored & Keyed w/Double Set Screws	2	2
M670xx	Model 600 Insert	8	1
M700Axxxx	Model 700 Hub Spline Bore	7	2
M700AxxxxC	Model 700 Hub Spline Bore w/Clamp	7	2
M700Bxxxx	Model 700 Hub Steel Bushed Spline Bore	7	2
M700BxxxxC	Model 700 Hub Steel Bushed Spline Bore w/Clamp	7	2
M700Mxxxx	Model 700 Hub Metric Bore & Key	5	2
M700R	Model 700 Hub No Bore	5	1
M700xxxxx	Model 700 Hub Bored & Keyed	5	1
M700xxxxxDSSxx	Model 700 Hub Bored & Keyed w/Double Set Screws	2	2
M770xx	Model 700 Insert	8	1
M800Axxxx	Model 800 Hub Spline Bore	7	2
M800AxxxxC	Model 800 Hub Spline Bore w/Clamp	7	2
M800Bxxxx	Model 800 Hub Steel Bushed Spline Bore	7	2
M800BxxxxC	Model 800 Hub Steel Bushed Spline Bore w/Clamp	7	2
M800Mxxxx	Model 800 Hub Metric Bore & Key	5	2
M800R	Model 800 Hub No Bore	5	1
M800xxxxx	Model 800 Hub Bored & Keyed	5	1
M800xxxxxDSSxx	Model 800 Hub Bored & Keyed w/Double Set Screws	2	2
M870xx	Model 800 Insert	8	1
M900Bxxxx	Model 900 Hub Steel Bushed Spline Bore	7	2
M900BxxxxC	Model 900 Hub Steel Bushed Spline Bore w/Clamp	7	2
M900Mxxxx	Model 900 Hub Metric Bore & Key	5	2
M900R	Model 900 Hub No Bore	5	1
M900xxxxx	Model 900 Hub Bored & Keyed	5	1
M900xxxxxDSSxx	Model 900 Hub Bored & Keyed w/Double Set Screws	2	2
M970xx	Model 900 Insert	8	1
MA-A034x-TP-AB	D03 Aluminum Tapping Plate A & B Ports on Sides - Size 4 Threads	102	25
MA-A034x-TP-PP	D03 Aluminum Perimeter Ported Tapping Plate - Size 4 Threads	102	25
MA-A034x-TP-PT	D03 Aluminum Tapping Plate P & T Ports on Sides - Size 4 Threads	102	25
MA-A03ZZ-OP-ZZ	D03 Aluminum Orifice Plate - No Threads	100	
MA-A03ZZ-TP-ZZ	D03 Aluminum Tapping Plate - No Threads	102	25
MA-A054x-TP-AB	D05 Aluminum Tapping Plate A & B Ports on Sides - Size 4 Threads	103	25
MA-A054x-TP-PP	D05 Aluminum Perimeter Ported Tapping Plate - Size 4 Threads	103	25
MA-A054x-TP-PT	D05 Aluminum Tapping Plate P & T Ports on Sides - Size 4 Threads	103	25
MA-A05ZZ-OP-ZZ	D05 Aluminum Orifice Plate - No Threads	101	25
MA-A05ZZ-PA-ZZ	D05 Aluminum Pilot Adaptor - No Threads	98	25
MA-A05ZZ-TP-ZZ	D05 Aluminum Tapping Plate - No Threads	103	25
MA-A05ZZ-UM-ZZ	D05 Aluminum Unloading Module - No Threads	99	25
MA-A084x-TP-AB	D08 Aluminum Tapping Plate A & B Ports on Sides - Size 4 Threads	104	25
MA-A084x-TP-PP	D08 Aluminum Perimeter Ported Tapping Plate - Size 4 Threads	104	25
MA-A084x-TP-PS	D08 Aluminum Tapping Plate All Ports on Short Sides - Size 4 Threads	104	25
MA-A084x-TP-PT	D08 Aluminum Tapping Plate P & T Ports on Sides - Size 4 Threads	104	25
MA-A08ZZ-TP-ZZ	D08 Aluminum Tapping Plate - No Threads	104	25
MAC-D12124-048/S	Anchor Double Channel, 1 3/4" Height, 48" Length, 12 Ga Steel	148	39
MAC-D12124-120/S	Anchor Double Channel, 1 3/4" Height, 120" Length, 12 Ga Steel	148	39
MAC-D12200-048/S	Anchor Double Channel, 2" Height, 48" Length, 12 Ga Steel	148	39
MAC-D12200-120/S	Anchor Double Channel, 2" Height, 120" Length, 12 Ga Steel	148	39
MAC-D14120-048/S	Anchor Double Channel, 1 5/8" Height, 48" Length, 14 Ga Steel	148	39

What is it, Where is it Index



Part Number	Description	Catalog Page	Price Page
MAC-D14120-048/SS4	Anchor Double Channel, 1 5/8" Height, 48" Length, 14 Ga 304 Stainless Steel	148	39
MAC-D14120-048/SS6	Anchor Double Channel, 1 5/8" Height, 48" Length, 14 Ga 316 Stainless Steel	148	39
MAC-D14120-120/S	Anchor Double Channel, 1 5/8" Height, 120" Length, 14 Ga Steel	148	39
MAC-D14120-120/SS4	Anchor Double Channel, 1 5/8" Height, 120" Length, 14 Ga 304 Stainless Steel	148	39
MAC-D14120-120/SS6	Anchor Double Channel, 1 5/8" Height, 120" Length, 14 Ga 316 Stainless Steel	148	39
MAC-S12028-036/S	Anchor Single Channel, 7/8" Height, 36" Length, 12 Ga Steel	148	39
MAC-S12028-048/S	Anchor Single Channel, 7/8" Height, 48" Length, 12 Ga Steel	148	39
MAC-S12028-120/S	Anchor Single Channel, 7/8" Height, 120" Length, 12 Ga Steel	148	39
MAC-S12100-036/S	Anchor Single Channel, 1" Height, 36" Length, 12 Ga Steel	148	39
MAC-S12100-048/S	Anchor Single Channel, 1" Height, 48" Length, 12 Ga Steel	148	39
MAC-S12100-120/S	Anchor Single Channel, 1" Height, 120" Length, 12 Ga Steel	148	39
MAC-S14026-048/S	Anchor Single Channel, 13/16" Height, 48" Length, 14 Ga Steel	148	39
MAC-S14026-048/SS4	Anchor Single Channel, 13/16" Height, 48" Length, 14 Ga 304 Stainless Steel	148	39
MAC-S14026-048/SS6	Anchor Single Channel, 13/16" Height, 48" Length, 14 Ga 316 Stainless Steel	148	39
MAC-S14026-120/S	Anchor Single Channel, 13/16" Height, 120" Length, 14 Ga Steel	148	39
MAC-S14026-120/SS4	Anchor Single Channel, 13/16" Height, 120" Length, 14 Ga 304 Stainless Steel	148	39
MAC-S14026-120/SS6	Anchor Single Channel, 13/16" Height, 120" Length, 14 Ga 316 Stainless Steel	148	39
MA-S034x-TP-AB	D03 Steel Tapping Plate A & B Ports on Sides - Size 4 Threads	102	25
MA-S034x-TP-PP	D03 Steel Perimeter Ported Tapping Plate - Size 4 Threads	102	25
MA-S034x-TP-PT	D03 Steel Tapping Plate P & T Ports on Sides - Size 4 Threads	102	25
MA-S03ZZ-OP-ZZ	D03 Steel Orifice Plate - No Threads	100	
MA-S03ZZ-TP-ZZ	D03 Steel Tapping Plate - No Threads	102	25
MA-S054x-TP-AB	D05 Steel Tapping Plate A & B Ports on Sides - Size 4 Threads	103	25
MA-S054x-TP-PP	D05 Steel Perimeter Ported Tapping Plate - Size 4 Threads	103	25
MA-S054x-TP-PT	D05 Steel Tapping Plate P & T Ports on Sides - Size 4 Threads	103	25
MA-S05ZZ-OP-ZZ	D05 Steel Orifice Plate - No Threads	101	25
MA-S05ZZ-PA-ZZ	D05 Steel Pilot Adaptor - No Threads	98	25
MA-S05ZZ-TP-ZZ	D05 Steel Tapping Plate - No Threads	103	25
MA-S05ZZ-UM-ZZ	D05 Steel Unloading Module - No Threads	99	25
MA-S084x-TP-AB	D08 Steel Tapping Plate A & B Ports on Sides - Size 4 Threads	104	25
MA-S084x-TP-PP	D08 Steel Perimeter Ported Tapping Plate - Size 4 Threads	104	25
MA-S084x-TP-PS	D08 Steel Tapping Plate All Ports on Short Sides - Size 4 Threads	104	25
MA-S084x-TP-PT	D08 Steel Tapping Plate P & T Ports on Sides - Size 4 Threads	104	25
MA-S08ZZ-TP-ZZ	D08 Steel Tapping Plate - No Threads	104	23
MBP-056/184	Motor Base Plate, NEMA 056 thru 184	177	43
MBP-213/256	Motor Base Plate, NEMA 213 thru 256	177	43
MBP-284/326	Motor Base Plate, NEMA 284 thru 326	177	43
MCC-008P	Channel Mounted Cushion Clamp, 1/4" Pipe	146	38
MCC-008T	Channel Mounted Cushion Clamp, .25" Tube	146	38
MCC-012P	Channel Mounted Cushion Clamp, 3/8" Pipe	146	38
MCC-012T	Channel Mounted Cushion Clamp, .375" Tube	146	38
MCC-016P	Channel Mounted Cushion Clamp, 1/2" Pipe	146	38
MCC-016T	Channel Mounted Cushion Clamp, .500" Tube	146	38
MCC-020T	Channel Mounted Cushion Clamp, .625" Tube	146	38
MCC-024P	Channel Mounted Cushion Clamp, 3/4" Pipe	146	38
MCC-024T	Channel Mounted Cushion Clamp, .750" Tube	146	38
MCC-028T	Channel Mounted Cushion Clamp, .875" Tube	146	38
MCC-100P	Channel Mounted Cushion Clamp, 1" Pipe	146	38
MCC-100T	Channel Mounted Cushion Clamp, 1.000" Tube	146	38
MCC-104T	Channel Mounted Cushion Clamp, 1.125" Tube	146	38
MCC-106T	Channel Mounted Cushion Clamp, 1.190" Tube	146	38
MCC-108P	Channel Mounted Cushion Clamp, 1 1/4" Pipe	146	38
MCC-108T	Channel Mounted Cushion Clamp, 1.250" Tube	146	38
MCC-112T	Channel Mounted Cushion Clamp, 1.375" Tube	147	38
MCC-116P	Channel Mounted Cushion Clamp, 1 1/2" Pipe	147	38
MCC-116T	Channel Mounted Cushion Clamp, 1.500" Tube	147	38
MCC-120T	Channel Mounted Cushion Clamp, 1.625" Tube	147	38
MCC-124T	Channel Mounted Cushion Clamp, 1.750" Tube	147	38
MCC-128T	Channel Mounted Cushion Clamp, 1.875" Tube	147	38
MCC-200P	Channel Mounted Cushion Clamp, 2" Pipe	147	38
MCC-200T	Channel Mounted Cushion Clamp, 2.000" Tube	147	38
MCC-204T	Channel Mounted Cushion Clamp, 2.125" Tube	147	38



What is it, Where is it Index

Part Number	Description	Catalog Page	Price Page
MCC-208T	Channel Mounted Cushion Clamp, 2.205" Tube	147	38
MCC-212T	Channel Mounted Cushion Clamp, 2.375" Tube	147	38
MCC-216P	Channel Mounted Cushion Clamp, 2 1/2" Pipe	147	38
MCC-216T	Channel Mounted Cushion Clamp, 2.500" Tube	147	38
MCC-220T	Channel Mounted Cushion Clamp, 2.625" Tube	147	38
MCC-228T	Channel Mounted Cushion Clamp, 2.875" Tube	147	38
MCC-300P	Channel Mounted Cushion Clamp, 3" Pipe	147	38
MCC-300T	Channel Mounted Cushion Clamp, 3.000" Tube	147	38
MCC-304T	Channel Mounted Cushion Clamp, 3.125" Tube	147	38
MCC-316P	Channel Mounted Cushion Clamp, 3 1/2" Pipe	147	38
MCC-320T	Channel Mounted Cushion Clamp, 3.625" Tube	147	38
MCC-400P	Channel Mounted Cushion Clamp, 4" Pipe	147	38
MCC-404T	Channel Mounted Cushion Clamp, 4.125" Tube	147	38
MCC-500P	Channel Mounted Cushion Clamp, 5" Pipe	147	38
MCC-600P	Channel Mounted Cushion Clamp, 6" Pipe	147	38
MDB056-B	Motor Dampening Bar, NEMA 056 Bolt Down Style	172	44
MDB056-W	Motor Dampening Bar, NEMA 056 Weld Style	174	44
MDB071-B	Motor Dampening Bar, IEC 071 Bolt Down Style	173	44
MDB071-W	Motor Dampening Bar, IEC 071 Weld Style	175	44
MDB080-B	Motor Dampening Bar, IEC 080 Bolt Down Style	173	44
MDB080-W	Motor Dampening Bar, IEC 080 Weld Style	175	44
MDB090L-B	Motor Dampening Bar, IEC 090 L Bolt Down Style	173	44
MDB090L-W	Motor Dampening Bar, IEC 090 L Weld Style	175	44
MDB090S-B	Motor Dampening Bar, IEC 090 S Bolt Down Style	173	44
MDB090S-W	Motor Dampening Bar, IEC 090 S Weld Style	175	44
MDB100L-B	Motor Dampening Bar, IEC 100 L Bolt Down Style	173	44
MDB100L-W	Motor Dampening Bar, IEC 100 L Weld Style	175	44
MDB112M-B	Motor Dampening Bar, IEC 112 M Bolt Down Style	173	44
MDB112M-W	Motor Dampening Bar, IEC 112 M Weld Style	175	44
MDB132M-B	Motor Dampening Bar, IEC 132 M Bolt Down Style	173	44
MDB132M-W	Motor Dampening Bar, IEC 132 M Weld Style	175	44
MDB132S-B	Motor Dampening Bar, IEC 132 S Bolt Down Style	173	44
MDB132S-W	Motor Dampening Bar, IEC 132 S Weld Style	175	44
MDB143-B	Motor Dampening Bar, NEMA 143 Bolt Down Style	172	44
MDB143-W	Motor Dampening Bar, NEMA 143 Weld Style	174	44
MDB145-B	Motor Dampening Bar, NEMA 145 Bolt Down Style	172	44
MDB145-W	Motor Dampening Bar, NEMA 145 Weld Style	174	44
MDB160L-B	Motor Dampening Bar, IEC 160 L Bolt Down Style	173	44
MDB160L-W	Motor Dampening Bar, IEC 160 L Weld Style	175	44
MDB160M-B	Motor Dampening Bar, IEC 160 M Bolt Down Style	173	44
MDB160M-W	Motor Dampening Bar, IEC 160 M Weld Style	175	44
MDB180L-B	Motor Dampening Bar, IEC 180 L Bolt Down Style	173	44
MDB180L-W	Motor Dampening Bar, IEC 180 L Weld Style	175	44
MDB180M-B	Motor Dampening Bar, IEC 180 M Bolt Down Style	173	44
MDB180M-W	Motor Dampening Bar, IEC 180 M Weld Style	175	44
MDB182-B	Motor Dampening Bar, NEMA 182 Bolt Down Style	172	44
MDB182-W	Motor Dampening Bar, NEMA 182 Weld Style	174	44
MDB184-B	Motor Dampening Bar, NEMA 184 Bolt Down Style	172	44
MDB184-W	Motor Dampening Bar, NEMA 184 Weld Style	174	44
MDB200L-B	Motor Dampening Bar, IEC 200 L Bolt Down Style	173	44
MDB200L-W	Motor Dampening Bar, IEC 200 L Weld Style	175	44
MDB213-B	Motor Dampening Bar, NEMA 213 Bolt Down Style	172	44
MDB213-W	Motor Dampening Bar, NEMA 213 Weld Style	174	44
MDB215-B	Motor Dampening Bar, NEMA 215 Bolt Down Style	172	44
MDB215-W	Motor Dampening Bar, NEMA 215 Weld Style	174	44
MDB225M-B	Motor Dampening Bar, IEC 225 M Bolt Down Style	173	44
MDB225M-W	Motor Dampening Bar, IEC 225 M Weld Style	175	44
MDB225S-B	Motor Dampening Bar, IEC 225 S Bolt Down Style	173	44
MDB225S-W	Motor Dampening Bar, IEC 225 S Weld Style	175	44
MDB250M-B	Motor Dampening Bar, IEC 250 M Bolt Down Style	173	44
MDB250M-W	Motor Dampening Bar, IEC 250 M Weld Style	175	44
MDB254-B	Motor Dampening Bar, NEMA 254 Bolt Down Style	172	44

What is it, Where is it Index



Part Number	Description	Catalog Page	Price Page
MDB254-W	Motor Dampening Bar, NEMA 254 Weld Style	174	44
MDB256-B	Motor Dampening Bar, NEMA 256 Bolt Down Style	172	44
MDB256-W	Motor Dampening Bar, NEMA 256 Weld Style	174	44
MDB280M-B	Motor Dampening Bar, NEMA 256 Bolt Down Style	173	44
MDB280M-W	Motor Dampening Bar, NEMA 256 Weld Style	175	44
MDB280S-B	Motor Dampening Bar, IEC 280 S Bolt Down Style	173	44
MDB280S-W	Motor Dampening Bar, IEC 280 S Weld Style	175	44
MDB284-B	Motor Dampening Bar, NEMA 284 Bolt Down Style	172	44
MDB284-W	Motor Dampening Bar, NEMA 284 Weld Style	174	44
MDB286-B	Motor Dampening Bar, NEMA 286 Bolt Down Style	172	44
MDB286-W	Motor Dampening Bar, NEMA 286 Weld Style	174	44
MDB315L-B	Motor Dampening Bar, IEC 315 L Bolt Down Style	173	44
MDB315L-W	Motor Dampening Bar, IEC 315 L Weld Style	175	44
MDB315M-B	Motor Dampening Bar, IEC 315 M Bolt Down Style	173	44
MDB315M-W	Motor Dampening Bar, IEC 315 M Weld Style	175	44
MDB315S-B	Motor Dampening Bar, IEC 315 S Bolt Down Style	173	44
MDB315S-W	Motor Dampening Bar, IEC 315 S Weld Style	175	44
MDB324-B	Motor Dampening Bar, NEMA 324 Bolt Down Style	172	44
MDB324-W	Motor Dampening Bar, NEMA 324 Weld Style	174	44
MDB326-B	Motor Dampening Bar, NEMA 326 Bolt Down Style	172	44
MDB326-W	Motor Dampening Bar, NEMA 326 Weld Style	174	44
MDB364-B	Motor Dampening Bar, NEMA 364 Bolt Down Style	172	44
MDB364-W	Motor Dampening Bar, NEMA 364 Weld Style	174	44
MDB365-B	Motor Dampening Bar, NEMA 365 Bolt Down Style	172	44
MDB365-W	Motor Dampening Bar, NEMA 365 Weld Style	174	44
MDB404-B	Motor Dampening Bar, NEMA 404 Bolt Down Style	172	44
MDB404-W	Motor Dampening Bar, NEMA 404 Weld Style	174	44
MDB405-B	Motor Dampening Bar, NEMA 405 Bolt Down Style	172	44
MDB405-W	Motor Dampening Bar, NEMA 405 Weld Style	174	44
MDB444-B	Motor Dampening Bar, NEMA 444 Bolt Down Style	172	44
MDB444-W	Motor Dampening Bar, NEMA 444 Weld Style	174	44
MDB445-B	Motor Dampening Bar, NEMA 445 Bolt Down Style	172	44
MDB445-W	Motor Dampening Bar, NEMA 445 Weld Style	174	44
MWP056-256	Motor Dampening Bar Weld Pad Kit, NEMA 056 thru 256	176	45
MWP071-132M	Motor Dampening Bar Weld Pad Kit, IEC 071 thru IEC 132M	176	45
MWP160M-180L	Motor Dampening Bar Weld Pad Kit, IEC 160M thru IEC 180L	176	45
MWP200L-315L	Motor Dampening Bar Weld Pad Kit, IEC 200L thru 315L	176	45
MWP284-286	Motor Dampening Bar Weld Pad Kit, NEMA 284 thru 286	176	45
MWP324-365	Motor Dampening Bar Weld Pad Kit, NEMA 324 thru 365	176	45
MWP404-405	Motor Dampening Bar Weld Pad Kit, NEMA 404 thru 405	176	45
MWP444-449	Motor Dampening Bar Weld Pad Kit, NEMA 444 thru 449	176	45
ORK-12000	Buna-N O'Ring Kit	178	45
ORK-12001	Viton O'Ring Kit	178	45
P090xxxxx	Model PM90 Hub Bored & Keyed	15	3
P097xx	Model PM90 Insert	14	3
PLLG-03T	Premium Line Liquid Level Gauge, 3" with Temp	171	43
PLLG-05T	Premium Line Liquid Level Gauge, 5" with Temp	171	43
PLLG-10T	Premium Line Liquid Level Gauge, 10" with Temp	171	43
PS-400-115	Single Pressure Switch	169	43
PS-400-215	Double Pressure Switch	169	43
PS-400-315	Triple Pressure Switch	169	43
R010-01024	R Series, Size 10 Rod End Coupler, 5/16-24 Thread	183	45
R010-01224	R Series, Size 10 Rod End Coupler, 3/8-24 Thread	183	45
R020-01420	R Series, Size 20 Rod End Coupler, 7/16-20 Thread	183	45
R020-01620	R Series, Size 20 Rod End Coupler, 1/2-20 Thread	183	45
R020-02018	R Series, Size 20 Rod End Coupler, 5/8-18 Thread	183	45
R030-02416	R Series, Size 30 Rod End Coupler, 3/4-16 Thread	183	45
R030-02814	R Series, Size 30 Rod End Coupler, 7/8-14 Thread	183	45
R040-10014	R Series, Size 40 Rod End Coupler, 1-14 Thread	183	45
R040-10812	R Series, Size 40 Rod End Coupler, 1 1/2-12 Thread	183	45
RDVS40-2	Dual Vertical Reservoir, 40 Gallon - Series 2	122	32
RDVS50-3	Dual Vertical Reservoir, 50 Gallon - Series 3	122	32



What is it, Where is it Index

Part Number	Description	Catalog Page	Price Page
RDVS60-2	Dual Vertical Reservoir, 60 Gallon - Series 2	122	32
RDVS60-3	Dual Vertical Reservoir, 60 Gallon - Series 3	122	32
REC06K	6" Reservoir End Cover	135	35
REC12CN	12" Reservoir End Cover with 3/4" NPT Drain Only	136	35
REC12CS	12" Reservoir End Cover with #12 SAE Drain Only	136	35
REC12CX	12" Reservoir End Cover Only	136	35
REC12KN	12" Reservoir End Cover Kit with 3/4" NPT Drain	136	35
REC12KS	12" Reservoir End Cover Kit with #12 SAE Drain	136	35
REC12KX	12" Reservoir End Cover Kit	136	35
REC14CN	14" Reservoir End Cover with 3/4" NPT Drain Only	136	35
REC14CS	14" Reservoir End Cover with #12 SAE Drain Only	136	35
REC14CX	14" Reservoir End Cover Only	136	35
REC14KN	14" Reservoir End Cover Kit with 3/4" NPT Drain	136	35
REC14KS	14" Reservoir End Cover Kit with #12 SAE Drain	136	35
REC14KX	14" Reservoir End Cover Kit	136	35
REC16CN	16" Reservoir End Cover with 3/4" NPT Drain Only	136	35
REC16CS	16" Reservoir End Cover with #12 SAE Drain Only	136	35
REC16CX	16" Reservoir End Cover Only	136	35
REC16KN	16" Reservoir End Cover Kit with 3/4" NPT Drain	136	35
REC16KS	16" Reservoir End Cover Kit with #12 SAE Drain	136	35
REC16KX	16" Reservoir End Cover Kit	136	35
REC18CN	18" Reservoir End Cover with 3/4" NPT Drain Only	136	35
REC18CS	18" Reservoir End Cover with #12 SAE Drain Only	136	35
REC18CX	18" Reservoir End Cover Only	136	35
REC18KN	18" Reservoir End Cover Kit with 3/4" NPT Drain	136	35
REC18KS	18" Reservoir End Cover Kit with #12 SAE Drain	136	35
REC18KX	18" Reservoir End Cover Kit	136	35
RHC010-FT	Horizontal Style Reservoir, 10 Gallon Capacity with Fixed Top	131	34
RHC020-FT	Horizontal Style Reservoir, 20 Gallon Capacity with Fixed Top	131	34
RHC030-FT	Horizontal Style Reservoir, 30 Gallon Capacity with Fixed Top	131	34
RHC040-FT	Horizontal Style Reservoir, 40 Gallon Capacity with Fixed Top	131	34
RHC060-FT	Horizontal Style Reservoir, 60 Gallon Capacity with Fixed Top	131	34
RHP010-RT	Horizontal Style Reservoir, 10 Gallon Capacity with Removable Top	132	34
RHP020-RT	Horizontal Style Reservoir, 20 Gallon Capacity with Removable Top	132	34
RHP030-RT	Horizontal Style Reservoir, 30 Gallon Capacity with Removable Top	132	34
RHP040-RT	Horizontal Style Reservoir, 40 Gallon Capacity with Removable Top	132	34
RJDPP010	Reservoir Drip Pan for 10 Gallon JIC Reservoir without Riser	133	34
RJDPP015	Reservoir Drip Pan for 15 Gallon JIC Reservoir without Riser	133	34
RJDPP020	Reservoir Drip Pan for 20 Gallon JIC Reservoir without Riser	133	34
RJDPP030	Reservoir Drip Pan for 30, 40 & 50 Gallon JIC Reservoir without Riser	133	34
RJDPP060	Reservoir Drip Pan for 60 Gallon JIC Reservoir without Riser	133	34
RJDPP080	Reservoir Drip Pan for 80 & 100 Gallon JIC Reservoir without Riser	133	34
RJDPP120	Reservoir Drip Pan for 120 & 150 Gallon JIC Reservoir without Riser	133	34
RJDPP200	Reservoir Drip Pan for 200 Gallon JIC Reservoir without Riser	133	34
RJDPR010	Reservoir Drip Pan for 10 Gallon JIC Reservoir with Riser	133	34
RJDPR015	Reservoir Drip Pan for 15 Gallon JIC Reservoir with Riser	133	34
RJDPR020	Reservoir Drip Pan for 20 Gallon JIC Reservoir with Riser	133	34
RJDPR030	Reservoir Drip Pan for 30 Gallon JIC Reservoir with Riser	133	34
RJDPR060	Reservoir Drip Pan for 60 Gallon JIC Reservoir with Riser	133	34
RJDPR080	Reservoir Drip Pan for 80 Gallon JIC Reservoir with Riser	133	34
RJDPR120	Reservoir Drip Pan for 120 Gallon JIC Reservoir with Riser	133	34
RJDPR200	Reservoir Drip Pan for 200 Gallon JIC Reservoir with Riser	133	34
RJIC010-FT	JIC Style Reservoir, 10 Gallon Capacity with Fixed Top	124	33
RJIC010-RB	JIC Style Reservoir, 10 Gallon Capacity with Removable Top & Baffle	124	33
RJIC010-RT	JIC Style Reservoir, 10 Gallon Capacity with Removable Top	124	33
RJIC015-FT	JIC Style Reservoir, 15 Gallon Capacity with Fixed Top	124	33
RJIC015-RB	JIC Style Reservoir, 15 Gallon Capacity with Removable Top & Baffle	124	33
RJIC015-RT	JIC Style Reservoir, 15 Gallon Capacity with Removable Top	124	33
RJIC020-FT	JIC Style Reservoir, 20 Gallon Capacity with Fixed Top	124	33
RJIC020-RB	JIC Style Reservoir, 20 Gallon Capacity with Removable Top & Baffle	124	33
RJIC020-RT	JIC Style Reservoir, 20 Gallon Capacity with Removable Top	124	33
RJIC030-FT	JIC Style Reservoir, 30 Gallon Capacity with Fixed Top	124	33

What is it, Where is it Index



Part Number	Description	Catalog Page	Price Page
RJIC030-RB	JIC Style Reservoir, 30 Gallon Capacity with Removable Top & Baffle	124	33
RJIC030-RT	JIC Style Reservoir, 30 Gallon Capacity with Removable Top	124	33
RJIC040-FT	JIC Style Reservoir, 40 Gallon Capacity with Fixed Top	124	33
RJIC040-RB	JIC Style Reservoir, 40 Gallon Capacity with Removable Top & Baffle	124	33
RJIC040-RT	JIC Style Reservoir, 40 Gallon Capacity with Removable Top	124	33
RJIC050-FT	JIC Style Reservoir, 50 Gallon Capacity with Fixed Top	124	33
RJIC050-RB	JIC Style Reservoir, 50 Gallon Capacity with Removable Top & Baffle	124	33
RJIC050-RT	JIC Style Reservoir, 50 Gallon Capacity with Removable Top	124	33
RJIC060-FT	JIC Style Reservoir, 60 Gallon Capacity with Fixed Top	124	33
RJIC060-RB	JIC Style Reservoir, 60 Gallon Capacity with Removable Top & Baffle	124	33
RJIC060-RT	JIC Style Reservoir, 60 Gallon Capacity with Removable Top	124	33
RJIC080-FT	JIC Style Reservoir, 80 Gallon Capacity with Fixed Top	124	33
RJIC080-RB	JIC Style Reservoir, 80 Gallon Capacity with Removable Top & Baffle	124	33
RJIC080-RT	JIC Style Reservoir, 80 Gallon Capacity with Removable Top	124	33
RJIC100-FT	JIC Style Reservoir, 100 Gallon Capacity with Fixed Top	124	33
RJIC100-RB	JIC Style Reservoir, 100 Gallon Capacity with Removable Top & Baffle	124	33
RJIC100-RT	JIC Style Reservoir, 100 Gallon Capacity with Removable Top	124	33
RJIC120-FT	JIC Style Reservoir, 120 Gallon Capacity with Fixed Top	124	33
RJIC120-RB	JIC Style Reservoir, 120 Gallon Capacity with Removable Top & Baffle	124	33
RJIC120-RT	JIC Style Reservoir, 120 Gallon Capacity with Removable Top	124	33
RJIC150-FT	JIC Style Reservoir, 150 Gallon Capacity with Fixed Top	124	33
RJIC150-RB	JIC Style Reservoir, 150 Gallon Capacity with Removable Top & Baffle	124	33
RJIC150-RT	JIC Style Reservoir, 150 Gallon Capacity with Removable Top	124	33
RJIC200-FT	JIC Style Reservoir, 200 Gallon Capacity with Fixed Top	124	33
RJIC200-RB	JIC Style Reservoir, 200 Gallon Capacity with Removable Top & Baffle	124	33
RJIC200-RT	JIC Style Reservoir, 200 Gallon Capacity with Removable Top	124	33
RJSM010	Reservoir Stacking Modult for 10 Gallon JIC Reservoir	134	35
RJSM015	Reservoir Stacking Modult for 15 Gallon JIC Reservoir	134	35
RJSM020	Reservoir Stacking Modult for 20 Gallon JIC Reservoir	134	35
RJSM030	Reservoir Stacking Modult for 30, 40 & 50 Gallon JIC Reservoir	134	35
RJSM060	Reservoir Stacking Modult for 60 Gallon JIC Reservoir	134	35
RJSM080	Reservoir Stacking Modult for 80 Gallon JIC Reservoir	134	35
RJSM100	Reservoir Stacking Modult for 100 Gallon JIC Reservoir	134	35
RJSM120	Reservoir Stacking Modult for 120 & 150 Gallon JIC Reservoir	134	35
RJSM200	Reservoir Stacking Modult for 200 Gallon JIC Reservoir	134	35
RLC010-FT	L Style Reservoir, 10 Gallon Capacity with Fixed Top	125	33
RLC020-FT	L Style Reservoir, 20 Gallon Capacity with Fixed Top	125	33
RLC030-FT	L Style Reservoir, 30 Gallon Capacity with Fixed Top	125	33
RLC045-FT	L Style Reservoir, 45 Gallon Capacity with Fixed Top	125	33
RLC060-FT	L Style Reservoir, 60 Gallon Capacity with Fixed Top	125	33
RLC080-FT	L Style Reservoir, 80 Gallon Capacity with Fixed Top	125	33
RLC100-FT	L Style Reservoir, 100 Gallon Capacity with Fixed Top	125	33
RLC120-FT	L Style Reservoir, 120 Gallon Capacity with Fixed Top	125	33
RLC150-FT	L Style Reservoir, 150 Gallon Capacity with Fixed Top	125	33
RLC200-FT	L Style Reservoir, 200 Gallon Capacity with Fixed Top	125	33
RLF-008P	Reservoir Return Line Flange, 1/2" NPT	141	37
RLF-008T	Reservoir Return Line Flange, 1/2" Tube	141	37
RLF-012P	Reservoir Return Line Flange, 3/4" NPT	141	37
RLF-012T	Reservoir Return Line Flange, 3/4" Tube	141	37
RLF-100P	Reservoir Return Line Flange, 1" NPT	141	37
RLF-100T	Reservoir Return Line Flange, 1" Tube	141	37
RLF-104P	Reservoir Return Line Flange, 1 1/4" NPT	141	37
RLF-104T	Reservoir Return Line Flange, 1 1/4" Tube	141	37
RLF-108P	Reservoir Return Line Flange, 1 1/2" NPT	141	37
RLF-108T	Reservoir Return Line Flange, 1 1/2" Tube	141	37
RLF-200P	Reservoir Return Line Flange, 2" NPT	141	37
RLF-200T	Reservoir Return Line Flange, 2" Tube	141	37
RLFE-000P	Economy Reservoir Return Line Flange, Blank	142	37
RLFE-006T	Economy Reservoir Return Line Flange, 3/8" Tube	142	37
RLFE-008P	Economy Reservoir Return Line Flange, 1/2" NPT	142	37
RLFE-008T	Economy Reservoir Return Line Flange, 1/2" Tube	142	37
RLFE-012P	Economy Reservoir Return Line Flange, 3/4" NPT	142	37



What is it, Where is it Index

Part Number	Description	Catalog Page	Price Page
RLFE-012T	Economy Reservoir Return Line Flange, 3/4" Tube	142	37
RLFE-100P	Economy Reservoir Return Line Flange, 1" NPT	142	37
RLFE-100T	Economy Reservoir Return Line Flange, 1" Tube	142	37
RLFE-104P	Economy Reservoir Return Line Flange, 1 1/4" NPT	142	37
RLFE-104T	Economy Reservoir Return Line Flange, 1 1/4" Tube	142	37
RLFE-108P	Economy Reservoir Return Line Flange, 1 1/2" NPT	142	37
RLFE-108T	Economy Reservoir Return Line Flange, 1 1/2" Tube	142	37
RLFE-200P	Economy Reservoir Return Line Flange, 2" NPT	142	37
RLFE-200T	Economy Reservoir Return Line Flange, 2" Tube	142	37
RLP010-HT	L Style Reservoir, 10 Gallon Capacity with Hinged Top	127	34
RLP010-RT	L Style Reservoir, 10 Gallon Capacity with Removable Top	126	33
RLP020-HT	L Style Reservoir, 20 Gallon Capacity with Hinged Top	127	34
RLP020-RT	L Style Reservoir, 20 Gallon Capacity with Removable Top	126	33
RLP030-HT	L Style Reservoir, 30 Gallon Capacity with Hinged Top	127	34
RLP030-RT	L Style Reservoir, 30 Gallon Capacity with Removable Top	126	33
RLP045-HT	L Style Reservoir, 45 Gallon Capacity with Hinged Top	127	34
RLP045-RT	L Style Reservoir, 45 Gallon Capacity with Removable Top	126	33
RLP060-HT	L Style Reservoir, 60 Gallon Capacity with Hinged Top	127	34
RLP060-RT	L Style Reservoir, 60 Gallon Capacity with Removable Top	126	33
RLP080-HT	L Style Reservoir, 80 Gallon Capacity with Hinged Top	127	34
RLP080-PHT	L Style Reservoir, 80 Gallon Capacity with Partially Hinged Top	128	34
RLP080-RT	L Style Reservoir, 80 Gallon Capacity with Removable Top	126	33
RLP100-HT	L Style Reservoir, 100 Gallon Capacity with Hinged Top	127	34
RLP100-PHT	L Style Reservoir, 100 Gallon Capacity with Partially Hinged Top	128	34
RLP100-RT	L Style Reservoir, 100 Gallon Capacity with Removable Top	126	33
RLP120-HT	L Style Reservoir, 120 Gallon Capacity with Hinged Top	127	34
RLP120-PHT	L Style Reservoir, 120 Gallon Capacity with Partially Hinged Top	128	34
RLP120-RT	L Style Reservoir, 120 Gallon Capacity with Removable Top	126	33
RLP150-HT	L Style Reservoir, 150 Gallon Capacity with Hinged Top	127	34
RLP150-PHT	L Style Reservoir, 150 Gallon Capacity with Partially Hinged Top	128	34
RLP150-RT	L Style Reservoir, 150 Gallon Capacity with Removable Top	126	33
RLP200-HT	L Style Reservoir, 200 Gallon Capacity with Hinged Top	127	34
RLP200-PHT	L Style Reservoir, 200 Gallon Capacity with Partially Hinged Top	128	34
RLP200-RT	L Style Reservoir, 200 Gallon Capacity with Removable Top	126	33
RPT010-HT	T Style Reservoir, 10 Gallon Capacity with Hinged Top	129	34
RPT020-HT	T Style Reservoir, 20 Gallon Capacity with Hinged Top	129	34
RPT030-HT	T Style Reservoir, 30 Gallon Capacity with Hinged Top	129	34
RPT045-HT	T Style Reservoir, 45 Gallon Capacity with Hinged Top	129	34
RPT060-HT	T Style Reservoir, 60 Gallon Capacity with Hinged Top	129	34
RPT080-HT	T Style Reservoir, 80 Gallon Capacity with Hinged Top	129	34
RPT080-PHT	T Style Reservoir, 80 Gallon Capacity with Partially Hinged Top	130	34
RPT100-HT	T Style Reservoir, 100 Gallon Capacity with Hinged Top	129	34
RPT100-PHT	T Style Reservoir, 100 Gallon Capacity with Partially Hinged Top	130	34
RPT120-HT	T Style Reservoir, 120 Gallon Capacity with Hinged Top	129	34
RPT120-PHT	T Style Reservoir, 120 Gallon Capacity with Partially Hinged Top	130	34
RPT150-HT	T Style Reservoir, 150 Gallon Capacity with Hinged Top	129	34
RPT150-PHT	T Style Reservoir, 150 Gallon Capacity with Partially Hinged Top	130	34
RPT200-HT	T Style Reservoir, 200 Gallon Capacity with Hinged Top	129	34
RPT200-PHT	T Style Reservoir, 200 Gallon Capacity with Partially Hinged Top	130	34
RPT300-HT	T Style Reservoir, 300 Gallon Capacity with Hinged Top	129	34
RPT400-PHT	T Style Reservoir, 400 Gallon Capacity with Hinged Top	129	34
RV-C10-2-02	C10-2 Valve Cartridge for D03 Hi Flow Manifolds and All Subplates, 50 - 200 psi	197	25
RV-C10-2-15	C10-2 Valve Cartridge for D03 Hi Flow Manifolds and All Subplates, 50 - 1500 psi	197	25
RV-C10-2-30	C10-2 Valve Cartridge for D03 Hi Flow Manifolds and All Subplates, 1500 - 3000 psi	197	25
RV-C10-2R-02	C10-2 Valve Cartridge for Old Style D03 & D03 Series Manifolds , 50 - 200 psi	197	25
RV-C10-2R-15	C10-2 Valve Cartridge for Old Style D03 & D03 Series Manifolds , 50 - 1500 psi	197	25
RV-C10-2R-30	C10-2 Valve Cartridge for Old Style D03 & D03 Series Manifolds , 1500 - 3000 psi	197	25
RVP02	Vertical ECONO Reservoir, 2 Gallon Capacity	117	32
RVP03	Vertical ECONO Reservoir, 3 Gallon Capacity	117	32
RVP05	Vertical ECONO Reservoir, 5 Gallon Capacity	117	32
RVP08	Vertical ECONO Reservoir, 8 Gallon Capacity	118	32
RVP10	Vertical ECONO Reservoir, 10 Gallon Capacity	118	32
RVP14	Vertical ECONO Reservoir, 14 Gallon Capacity	118	32
RVP20	Vertical ECONO Reservoir, 20 Gallon Capacity	119	32
RVP25	Vertical ECONO Reservoir, 25 Gallon Capacity	119	32

What is it, Where is it Index



Part Number	Description	Catalog Page	Price Page
RVPT-1	ECONO Vertical Reservoir Cover Plate, Blank	120	32
RVPT-2	ECONO Vertical Reservoir Cover Plate with 1/2" NPT Filler Breather Cutout	120	32
RVPT-3	ECONO Vertical Reservoir Cover Plate with 1/2" NPT Filler Breather & 056 Mount Cutout	120	32
RVPT-4	ECONO Vertical Reservoir Cover Plate with 1/2" NPT Filler Breather & 056 Mount Cutout & 1/2" NPT Connector	120	32
RVS05-1	Vertical Reservoir, 5 Gallon Capacity, Series 1	121	32
RVS10-2	Vertical Reservoir, 10 Gallon Capacity, Series 2	121	32
RVS10A-1	Vertical Reservoir, 10 Gallon Capacity, Series 1	121	32
RVS10B-2	Vertical Reservoir, 10 Gallon Capacity, Series 2	121	32
RVS1-T-1	Vertical Reservoir Cover Plate, Series 1, Blank	123	32
RVS1-T-2	Vertical Reservoir Cover Plate, Series 1 with Filler Breather Cutout	123	32
RVS1-T-3/A	Vertical Reservoir Cover Plate, Series 1 with Filler Breather Cutout and 056A Mount Cutout	123	32
RVS1-T-3/B	Vertical Reservoir Cover Plate, Series 1 with Filler Breather Cutout and 056B Mount Cutout	123	32
RVS1-T-4/C	Vertical Reservoir Cover Plate, Series 1 with Filler Breather Cutout and 182A Mount Cutout	121	32
RVS20-2	Vertical Reservoir, 20 Gallon Capacity, Series 2	121	32
RVS20-3	Vertical Reservoir, 20 Gallon Capacity, Series 3	121	32
RVS2-T-1	Vertical Reservoir Cover Plate, Series 2, Blank	123	32
RVS2-T-2	Vertical Reservoir Cover Plate, Series 2 with Filler Breather Cutout	123	32
RVS2-T-3/A	Vertical Reservoir Cover Plate, Series 2 with Filler Breather Cutout and 056A Mount Cutout	123	32
RVS2-T-3/B	Vertical Reservoir Cover Plate, Series 2 with Filler Breather Cutout and 056B Mount Cutout	123	32
RVS2-T-4/C	Vertical Reservoir Cover Plate, Series 2 with Filler Breather Cutout and 182A Mount Cutout	123	32
RVS2-T-4/D	Vertical Reservoir Cover Plate, Series 2 with Filler Breather Cutout and 182B Mount Cutout	123	32
RVS30-2	Vertical Reservoir, 30 Gallon Capacity, Series 2	121	32
RVS30-3	Vertical Reservoir, 30 Gallon Capacity, Series 3	121	32
RVS3-T-1	Vertical Reservoir Cover Plate, Series 3, Blank	123	32
RVS3-T-2	Vertical Reservoir Cover Plate, Series 3 with Filler Breather Cutout	123	32
RVS3-T-3/A	Vertical Reservoir Cover Plate, Series 3 with Filler Breather Cutout and 056A Mount Cutout	123	32
RVS3-T-3/B	Vertical Reservoir Cover Plate, Series 3 with Filler Breather Cutout and 056B Mount Cutout	123	32
RVS3-T-4/C	Vertical Reservoir Cover Plate, Series 3 with Filler Breather Cutout and 182A Mount Cutout	123	32
RVS3-T-4/D	Vertical Reservoir Cover Plate, Series 3 with Filler Breather Cutout and 182B Mount Cutout	123	32
RVS40-3	Vertical Reservoir, 40 Gallon Capacity, Series 3	121	32
RV-T10A-15	T-10A Valve Cartridge for D03 Hi Flow Manifolds and All Subplates, 50 - 1500 psi	197	25
RV-T10A-30	T-10A Valve Cartridge for D03 Hi Flow Manifolds and All Subplates, 1500 - 3000 psi	197	25
RV-T3A-08	T-3A Valve Cartridge for D05 Std Flow, D05 Hi Flow & D08 Manifolds, 25 - 800 psi	197	25
RV-T3A-15	T-3A Valve Cartridge for D05 Std Flow, D05 Hi Flow & D08 Manifolds, 50 - 1500 psi	197	25
RV-T3A-30	T-3A Valve Cartridge for D05 Std Flow, D05 Hi Flow & D08 Manifolds, 100 - 3000 psi	197	25
S056xx100M	Steel NEMA 056 Motor Mount to Metric 100mm Pump	33	8
S056xx100MV	Steel NEMA 056 Vertical Motor Mount to Metric 100mm Pump	36	9
S056xx125M	Steel NEMA 056 Motor Mount to Metric 125mm Pump	33	8
S056xx125MV	Steel NEMA 056 Vertical Motor Mount to Metric 125mm Pump	36	9
S056xx2A	Steel NEMA 056 Motor Mount to SAE A Pump	33	8
S056xx2AA	Steel NEMA 056 Motor Mount to SAE 2AA Pump	33	8
S056xx2AAV	Steel NEMA 056 Vertical Motor Mount to SAE 2AA Pump	36	9
S056xx2AV	Steel NEMA 056 Vertical Motor Mount to SAE A Pump	36	9
S056xx2B	Steel NEMA 056 Motor Mount to SAE B Pump	33	8
S056xx2BV	Steel NEMA 056 Vertical Motor Mount to SAE B Pump	36	9
S056xx2C	Steel NEMA 056 Motor Mount to SAE C Pump	33	8
S056xx2CV	Steel NEMA 056 Vertical Motor Mount to SAE C Pump	36	9
S056xx4F	Steel NEMA 056 Motor Mount to USA4F17 Pump	33	8
S056xx4FV	Steel NEMA 056 Vertical Motor Mount to USA4F17 Pump	36	9
S056xx63M	Steel NEMA 056 Motor Mount to Metric 63mm Pump	33	8
S056xx63MS	Steel NEMA 056 Motor Mount to Metric 63mm Special Pump	33	8
S056xx63MSV	Steel NEMA 056 Vertical Motor Mount to Metric 63mm Special Pump	36	9
S056xx63MV	Steel NEMA 056 Vertical Motor Mount to Metric 63mm Pump	36	9
S056xx80M	Steel NEMA 056 Motor Mount to Metric 80mm Pump	33	8
S056xx80MS	Steel NEMA 056 Motor Mount to Metric 80mm Special Pump	33	8
S056xx80MSV	Steel NEMA 056 Vertical Motor Mount to Metric 80mm Special Pump	36	9
S056xx80MV	Steel NEMA 056 Vertical Motor Mount to Metric 80mm Pump	36	9
S056xxxx45	Steel NEMA 056 Motor Mount w/pump holes rotated 45 degrees		10
S056xxxxM8	Steel NEMA 056 Motor Mount w/4 additional holes on motor end to allow rotating mount +/-45 degrees		10
S056xxxxVV	Steel NEMA 056 Special Vertical Motor Mount for WorldWide Corp Motor		10
S182xx100M	Steel NEMA 182 Motor Mount to Metric 100mm Pump	34	8
S182xx100MV	Steel NEMA 182 Vertical Motor Mount to Metric 100mm Pump	37	9
S182xx125M	Steel NEMA 182 Motor Mount to Metric 125mm Pump	34	8
S182xx125MV	Steel NEMA 182 Vertical Motor Mount to Metric 125mm Pump	37	9
S182xx160M	Steel NEMA 182 Motor Mount to Metric 160mm Pump	34	8



What is it, Where is it Index

Part Number	Description	Catalog Page	Price Page
S182xx160MV	Steel NEMA 182 Vertical Motor Mount to Metric 160mm Pump	37	9
S182xx180M	Steel NEMA 182 Motor Mount to Metric 180mm Pump	34	8
S182xx180MV	Steel NEMA 182 Vertical Motor Mount to Metric 180mm Pump	37	9
S182xx2A	Steel NEMA 182 Motor Mount to SAE A Pump	34	8
S182xx2AA	Steel NEMA 182 Motor Mount to SAE 2AA Pump	34	8
S182xx2AAV	Steel NEMA 182 Vertical Motor Mount to SAE 2AA Pump	37	9
S182xx2AV	Steel NEMA 182 Vertical Motor Mount to SAE A Pump	37	9
S182xx2B	Steel NEMA 182 Motor Mount to SAE B Pump	34	8
S182xx2BV	Steel NEMA 182 Vertical Motor Mount to SAE B Pump	37	9
S182xx2C	Steel NEMA 182 Motor Mount to SAE C Pump	34	8
S182xx2CV	Steel NEMA 182 Vertical Motor Mount to SAE C Pump	37	9
S182xx2D	Steel NEMA 182 Motor Mount to SAE D Pump	34	8
S182xx2DV	Steel NEMA 182 Vertical Motor Mount to SAE D Pump	37	9
S182xx4F	Steel NEMA 182 Motor Mount to USA4F17 Pump	34	8
S182xx4FV	Steel NEMA 182 Vertical Motor Mount to USA4F17 Pump	37	9
S182xx63M	Steel NEMA 182 Motor Mount to Metric 63mm Pump		8
S182xx63MS	Steel NEMA 182 Motor Mount to Metric 63mm Special Pump		8
S182xx63MSV	Steel NEMA 182 Vertical Motor Mount to Metric 63mm Special Pump	37	9
S182xx63MV	Steel NEMA 182 Vertical Motor Mount to Metric 63mm Pump	37	9
S182xx80M	Steel NEMA 182 Motor Mount to Metric 80mm Pump		8
S182xx80MS	Steel NEMA 182 Motor Mount to Metric 80mm Special Pump		8
S182xx80MSV	Steel NEMA 182 Vertical Motor Mount to Metric 80mm Special Pump	37	9
S182xx80MV	Steel NEMA 182 Vertical Motor Mount to Metric 80mm Pump	37	9
S182xxPVR50	Steel NEMA 182 Motor Mount to PVR50 Pump		8
S182xxxxx45	Steel NEMA 182 Motor Mount w/pump holes rotated 45 degrees		10
S182xxxxxM8	Steel NEMA 182 Motor Mount w/4 additional holes on motor end to allow rotating mount +/-45 degrees		10
S182xxxxxVV	Steel NEMA 182 Special Vertical Motor Mount for WorldWide Corp Motor		10
S284xx100M	Steel NEMA 284 Motor Mount to Metric 100mm Pump	34	8
S284xx100MV	Steel NEMA 284 Vertical Motor Mount to Metric 100mm Pump	37	9
S284xx125M	Steel NEMA 284 Motor Mount to Metric 125mm Pump	34	8
S284xx125MV	Steel NEMA 284 Vertical Motor Mount to Metric 125mm Pump	37	9
S284xx160M	Steel NEMA 284 Motor Mount to Metric 160mm Pump	34	8
S284xx160MV	Steel NEMA 284 Vertical Motor Mount to Metric 160mm Pump	37	9
S284xx180M	Steel NEMA 284 Motor Mount to Metric 180mm Pump	34	8
S284xx180MV	Steel NEMA 284 Vertical Motor Mount to Metric 180mm Pump	37	9
S284xx200M	Steel NEMA 284 Motor Mount to Metric 200mm Pump	34	8
S284xx200MV	Steel NEMA 284 Vertical Motor Mount to Metric 200mm Pump	37	9
S284xx250M	Steel NEMA 284 Motor Mount to Metric 250mm Pump	34	8
S284xx250MV	Steel NEMA 284 Vertical Motor Mount to Metric 250mm Pump	37	9
S284xx2A	Steel NEMA 284 Motor Mount to SAE A Pump	34	8
S284xx2AV	Steel NEMA 284 Vertical Motor Mount to SAE A Pump	37	9
S284xx2B	Steel NEMA 284 Motor Mount to SAE B Pump	34	8
S284xx2BV	Steel NEMA 284 Vertical Motor Mount to SAE B Pump	37	9
S284xx2C	Steel NEMA 284 Motor Mount to SAE C Pump	34	8
S284xx2CV	Steel NEMA 284 Vertical Motor Mount to SAE C Pump	37	9
S284xx2D	Steel NEMA 284 Motor Mount to SAE D Pump	34	8
S284xx2DV	Steel NEMA 284 Vertical Motor Mount to SAE D Pump	37	9
S284xx2E	Steel NEMA 284 Motor Mount to SAE E Pump	34	8
S284xx2EV	Steel NEMA 284 Vertical Motor Mount to SAE E Pump	37	9
S284xx2F	Steel NEMA 284 Motor Mount to SAE F Pump	34	8
S284xx2FV	Steel NEMA 284 Vertical Motor Mount to SAE F Pump	37	9
S284xx63M	Steel NEMA 284 Motor Mount to Metric 63mm Pump		8
S284xx63MS	Steel NEMA 284 Vertical Motor Mount to Metric 63mm Pump		8
S284xx63MSV	Steel NEMA 284 Motor Mount to Metric 63mm Special Pump		9
S284xx63MV	Steel NEMA 284 Vertical Motor Mount to Metric 63mm Special Pump		9
S284xx80M	Steel NEMA 284 Motor Mount to Metric 80mm Pump		8
S284xx80MS	Steel NEMA 284 Vertical Motor Mount to Metric 80mm Pump		8
S284xx80MSV	Steel NEMA 284 Motor Mount to Metric 80mm Special Pump		9
S284xx80MV	Steel NEMA 284 Vertical Motor Mount to Metric 80mm Special Pump		9
S284xxPVR50	Steel NEMA 284 Motor Mount to PVR50 Pump		8
S284xxxxx45	Steel NEMA 284 Motor Mount w/pump holes rotated 45 degrees		10
S284xxxxxM8	Steel NEMA 284 Motor Mount w/4 additional holes on motor end to allow rotating mount +/-45 degrees		10
S324xx100M	Steel NEMA 324 Motor Mount to Metric 100mm Pump	35	8
S324xx100MV	Steel NEMA 324 Vertical Motor Mount to Metric 100mm Pump	38	9
S324xx125M	Steel NEMA 324 Motor Mount to Metric 125mm Pump		8

What is it, Where is it Index



Part Number	Description	Catalog Page	Price Page
S324xx125MV	Steel NEMA 324 Vertical Motor Mount to Metric 125mm Pump	38	9
S324xx160M	Steel NEMA 324 Motor Mount to Metric 160mm Pump	35	8
S324xx160MV	Steel NEMA 324 Vertical Motor Mount to Metric 160mm Pump	38	9
S324xx180M	Steel NEMA 324 Motor Mount to Metric 180mm Pump	35	8
S324xx180MV	Steel NEMA 324 Vertical Motor Mount to Metric 180mm Pump	38	9
S324xx200M	Steel NEMA 324 Motor Mount to Metric 200mm Pump	35	8
S324xx200MV	Steel NEMA 324 Vertical Motor Mount to Metric 200mm Pump	38	9
S324xx250M	Steel NEMA 324 Motor Mount to Metric 250mm Pump	35	8
S324xx250MV	Steel NEMA 324 Vertical Motor Mount to Metric 250mm Pump	38	9
S324xx2A	Steel NEMA 324 Motor Mount to SAE A Pump	35	8
S324xx2AV	Steel NEMA 324 Vertical Motor Mount to SAE A Pump	38	9
S324xx2B	Steel NEMA 324 Motor Mount to SAE B Pump	35	8
S324xx2BV	Steel NEMA 324 Vertical Motor Mount to SAE B Pump	38	9
S324xx2C	Steel NEMA 324 Motor Mount to SAE C Pump	35	8
S324xx2CV	Steel NEMA 324 Vertical Motor Mount to SAE C Pump	38	9
S324xx2D	Steel NEMA 324 Motor Mount to SAE D Pump	35	8
S324xx2DV	Steel NEMA 324 Vertical Motor Mount to SAE D Pump	38	9
S324xx2E	Steel NEMA 324 Motor Mount to SAE E Pump	35	8
S324xx2EV	Steel NEMA 324 Vertical Motor Mount to SAE E Pump	38	9
S324xx2F	Steel NEMA 324 Motor Mount to SAE F Pump	35	8
S324xx2FV	Steel NEMA 324 Vertical Motor Mount to SAE F Pump	38	9
S324xx63M	Steel NEMA 324 Motor Mount to Metric 63mm Pump		8
S324xx63MS	Steel NEMA 324 Vertical Motor Mount to Metric 63mm Pump		8
S324xx63MSV	Steel NEMA 324 Motor Mount to Metric 63mm Special Pump		9
S324xx63MV	Steel NEMA 324 Vertical Motor Mount to Metric 63mm Special Pump		9
S324xx80M	Steel NEMA 324 Motor Mount to Metric 80mm Pump		8
S324xx80MS	Steel NEMA 324 Vertical Motor Mount to Metric 80mm Pump		8
S324xx80MSV	Steel NEMA 324 Motor Mount to Metric 80mm Special Pump		9
S324xx80MV	Steel NEMA 324 Vertical Motor Mount to Metric 80mm Special Pump		9
S324xxPVR50	Steel NEMA 324 Motor Mount to PVR50 Pump		8
S324xxxxx45	Steel NEMA 324 Motor Mount w/pump holes rotated 45 degrees		10
S324xxxxxM8	Steel NEMA 324 Motor Mount w/4 additional holes on motor end to allow rotating mount +/-45 degrees		10
S444xx100M	Steel NEMA 444 Motor Mount to Metric 100mm Pump		8
S444xx100MV	Steel NEMA 444 Vertical Motor Mount to Metric 100mm Pump	38	9
S444xx125M	Steel NEMA 444 Motor Mount to Metric 125mm Pump	35	8
S444xx125MV	Steel NEMA 444 Vertical Motor Mount to Metric 125mm Pump	38	9
S444xx160M	Steel NEMA 444 Motor Mount to Metric 160mm Pump	35	8
S444xx160MV	Steel NEMA 444 Vertical Motor Mount to Metric 160mm Pump	38	9
S444xx180M	Steel NEMA 444 Motor Mount to Metric 180mm Pump	35	8
S444xx180MV	Steel NEMA 444 Vertical Motor Mount to Metric 180mm Pump	38	9
S444xx200M	Steel NEMA 444 Motor Mount to Metric 200mm Pump	35	8
S444xx200MV	Steel NEMA 444 Vertical Motor Mount to Metric 200mm Pump	38	9
S444xx250M	Steel NEMA 444 Motor Mount to Metric 250mm Pump	35	8
S444xx250MV	Steel NEMA 444 Vertical Motor Mount to Metric 250mm Pump	38	9
S444xx2A	Steel NEMA 444 Motor Mount to SAE A Pump	35	8
S444xx2AV	Steel NEMA 444 Vertical Motor Mount to SAE A Pump	38	9
S444xx2B	Steel NEMA 444 Motor Mount to SAE B Pump	35	8
S444xx2BV	Steel NEMA 444 Vertical Motor Mount to SAE B Pump	38	9
S444xx2C	Steel NEMA 444 Motor Mount to SAE C Pump	35	8
S444xx2CV	Steel NEMA 444 Vertical Motor Mount to SAE C Pump	38	9
S444xx2D	Steel NEMA 444 Motor Mount to SAE D Pump	35	8
S444xx2DV	Steel NEMA 444 Vertical Motor Mount to SAE D Pump	38	9
S444xx2E	Steel NEMA 444 Motor Mount to SAE E Pump	35	8
S444xx2EV	Steel NEMA 444 Vertical Motor Mount to SAE E Pump	38	9
S444xx2F	Steel NEMA 444 Motor Mount to SAE F Pump	35	8
S444xx2FV	Steel NEMA 444 Vertical Motor Mount to SAE F Pump	38	9
S444xx63M	Steel NEMA 444 Mount to Metric 63mm Pump		8
S444xx63MS	Steel NEMA 444 Mount to Metric 63mm Special Pump		8
S444xx63MSV	Steel NEMA 444 Vertical Mount to Metric 63mm Pump		9
S444xx63MV	Steel NEMA 444 Vertical Mount to Metric 63mm Special Pump		9
S444xx80M	Steel NEMA 444 Mount to Metric 80mm Pump		8
S444xx80MS	Steel NEMA 444 Mount to Metric 80mm Special Pump		8
S444xx80MSV	Steel NEMA 444 Vertical Mount to Metric 80mm Pump		9
S444xx80MV	Steel NEMA 444 Vertical Mount to Metric 80mm Special Pump		9



What is it, Where is it Index

Part Number	Description	Catalog Page	Price Page
S444xxPVR50	Steel NEMA 444 Motor Mount to PVR50 Pump		8
S444xxxxx45	Steel NEMA 444 Motor Mount w/pump holes rotated 45 degrees		10
S444xxxxxM8	Steel NEMA 444 Motor Mount w/4 additional holes on motor end to allow rotating mount +/-45 degrees		10
SE575xx100M	Steel 5.75" Pilot Engine Mount to Metric 100mm Pump	39	8
SE575xx2A	Steel 5.75" Pilot Engine Mount to SAE A Pump	39	8
SE575xx2AA	Steel 5.75" Pilot Engine Mount to SAE 2AA Pump	39	8
SE575xx2B	Steel 5.75" Pilot Engine Mount to SAE 2B Pump	39	8
SE575xx4F	Steel 5.75" Pilot Engine Mount to USA4F17 Pump	39	8
SE575xx63M	Steel 5.75" Pilot Engine Mount to Metric 63mm Pump	39	8
SE575xx63MS	Steel 5.75" Pilot Engine Mount to Metric 63mm Special Pump	39	8
SE575xx80M	Steel 5.75" Pilot Engine Mount to Metric 80mm Pump	39	8
SE575xx80MS	Steel 5.75" Pilot Engine Mount to Metric 80mm Special Pump	39	8
SE644xx100M	Steel 6.44" Pilot Engine Mount to Metric 100mm Pump	40	8
SE644xx125M	Steel 6.44" Pilot Engine Mount to Metric 125mm Pump	40	8
SE644xx160M	Steel 6.44" Pilot Engine Mount to Metric 160mm Pump	40	8
SE644xx180M	Steel 6.44" Pilot Engine Mount to Metric 180mm Pump	40	8
SE644xx2A	Steel 6.44" Pilot Engine Mount to SAE A Pump	40	8
SE644xx2AA	Steel 6.44" Pilot Engine Mount to SAE 2AA Pump	40	8
SE644xx2B	Steel 6.44" Pilot Engine Mount to SAE B Pump	40	8
SE644xx2C	Steel 6.44" Pilot Engine Mount to SAE C Pump	40	8
SE644xx2D	Steel 6.44" Pilot Engine Mount to SAE D Pump	40	8
SE644xx4F	Steel 6.44" Pilot Engine Mount to SAE USA4F17 Pump	40	8
SE644xx63M	Steel 6.44" Pilot Engine Mount to Metric 63mm Pump	40	8
SE644xx63MS	Steel 6.44" Pilot Engine Mount to Metric 63mm Special Pump	40	8
SE644xx80M	Steel 6.44" Pilot Engine Mount to Metric 80mm Pump	40	8
SE644xx80MS	Steel 6.44" Pilot Engine Mount to Metric 80mm Special Pump	40	8
SE700xx100M	Steel 7.00" Pilot Engine Mount to Metric 100mm Pump	40	8
SE700xx125M	Steel 7.00" Pilot Engine Mount to Metric 125mm Pump	40	8
SE700xx160M	Steel 7.00" Pilot Engine Mount to Metric 160mm Pump	40	8
SE700xx180M	Steel 7.00" Pilot Engine Mount to Metric 180mm Pump	40	8
SE700xx2A	Steel 7.00" Pilot Engine Mount to SAE A Pump	40	8
SE700xx2AA	Steel 7.00" Pilot Engine Mount to SAE 2AA Pump	40	8
SE700xx2B	Steel 7.00" Pilot Engine Mount to SAE B Pump	40	8
SE700xx2C	Steel 7.00" Pilot Engine Mount to SAE C Pump	40	8
SE700xx2D	Steel 7.00" Pilot Engine Mount to SAE D Pump	40	8
SE700xx4F	Steel 7.00" Pilot Engine Mount to SAE USA4F17 Pump	40	8
SE787xx63M	Steel 7.87" Pilot Engine Mount to Metric 63mm Pump		8
SE787xx63MS	Steel 7.87" Pilot Engine Mount to Metric 63mm Special Pump		8
SE787xx80M	Steel 7.87" Pilot Engine Mount to Metric 80mm Pump		8
SE787xx80MS	Steel 7.87" Pilot Engine Mount to Metric 80mm Special Pump		8
SE787xx100M	Steel 7.87" Pilot Engine Mount to Metric 100mm Pump	41	8
SE787xx125M	Steel 7.87" Pilot Engine Mount to Metric 125mm Pump	41	8
SE787xx160M	Steel 7.87" Pilot Engine Mount to Metric 160mm Pump	41	8
SE787xx180M	Steel 7.87" Pilot Engine Mount to Metric 180mm Pump	41	8
SE787xx2A	Steel 7.87" Pilot Engine Mount to SAE A Pump	41	8
SE787xx2AA	Steel 7.87" Pilot Engine Mount to SAE 2AA Pump	41	8
SE787xx2B	Steel 7.87" Pilot Engine Mount to SAE B Pump	41	8
SE787xx2C	Steel 7.87" Pilot Engine Mount to SAE C Pump	41	8
SE787xx2D	Steel 7.87" Pilot Engine Mount to SAE D Pump	41	8
SE787xx4F	Steel 7.87" Pilot Engine Mount to SAE USA4F17 Pump	41	8
SE787xx63M	Steel 7.87" Pilot Engine Mount to Metric 63mm Pump		8
SE787xx63MS	Steel 7.87" Pilot Engine Mount to Metric 63mm Special Pump		8
SE787xx80M	Steel 7.87" Pilot Engine Mount to Metric 80mm Pump		8
SE787xx80MS	Steel 7.87" Pilot Engine Mount to Metric 80mm Special Pump		8
SFH-B104/00-00-0-00	Spin-On Filter Head, 1 1/4" BSPT inlet & outlet ports, No By-Pass, No Gauge Port, No Indicators	158	40
SFH-P104/00-00-0-00	Spin-On Filter Head, 1 1/4" NPT inlet & outlet ports, No By-Pass, No Gauge Port, No Indicators	158	40
SFH-S020/00-00-0-00	Spin-On Filter Head, #20 SAE inlet & outlet ports, No By-Pass, No Gauge Port, No Indicators	158	40
SLF-008P	Premium Suction Line Flange, 1/2" Pipe	141	37
SLF-008T	Premium Suction Line Flange, 1/2" Tube	141	37
SLF-012P	Premium Suction Line Flange, 3/4" Pipe	141	37
SLF-012T	Premium Suction Line Flange, 3/4" Tube	141	37
SLF-100P	Premium Suction Line Flange, 1" Pipe	141	37
SLF-100T	Premium Suction Line Flange, 1" Tube	141	37
SLF-104P	Premium Suction Line Flange, 1 1/4" Pipe	141	37

What is it, Where is it Index



Part Number	Description	Catalog Page	Price Page
SLF-104T	Premium Suction Line Flange, 1 1/4" Tube	141	37
SLF-108P	Premium Suction Line Flange, 1 1/2" Pipe	141	37
SLF-108T	Premium Suction Line Flange, 1 1/2" Tube	141	37
SLF-200P	Premium Suction Line Flange, 2" Pipe	141	37
SLF-200T	Premium Suction Line Flange, 2" Tube	141	37
SLFE-500-000P	Economy Suction Line Flange, 4 1/2" Cutout, Blank	143	37
SLFE-500-006T	Economy Suction Line Flange, 4 1/2" Cutout, 3/8" Tube	143	37
SLFE-500-008P	Economy Suction Line Flange, 4 1/2" Cutout, 1/2" Pipe	143	37
SLFE-500-008T	Economy Suction Line Flange, 4 1/2" Cutout, 1/2" Tube	143	37
SLFE-500-012P	Economy Suction Line Flange, 4 1/2" Cutout, 3/4" Pipe	143	37
SLFE-500-012T	Economy Suction Line Flange, 4 1/2" Cutout, 3/4" Tube	143	37
SLFE-500-100P	Economy Suction Line Flange, 4 1/2" Cutout, 1" Pipe	143	37
SLFE-500-100T	Economy Suction Line Flange, 4 1/2" Cutout, 1" Tube	143	37
SLFE-500-104P	Economy Suction Line Flange, 4 1/2" Cutout, 1 1/4" Pipe	143	37
SLFE-500-104T	Economy Suction Line Flange, 4 1/2" Cutout, 1 1/4" Tube	143	37
SLFE-500-108P	Economy Suction Line Flange, 4 1/2" Cutout, 1 1/2" Pipe	143	37
SLFE-500-108T	Economy Suction Line Flange, 4 1/2" Cutout, 1 1/2" Tube	143	37
SLFE-500-200P	Economy Suction Line Flange, 4 1/2" Cutout, 2" Pipe	143	37
SLFE-700-108P	Economy Suction Line Flange, 6 1/2" Cutout, 1 1/2" Pipe	143	37
SLFE-700-200P	Economy Suction Line Flange, 6 1/2" Cutout, 2" Pipe	143	37
SLFE-700-208P	Economy Suction Line Flange, 6 1/2" Cutout, 2 1/2" Pipe	143	37
SLFE-700-300P	Economy Suction Line Flange, 6 1/2" Cutout, 3" Pipe	143	37
SLLG-03T	Standard Line Liquid Level Gauge, 3" with Temp	170	43
SLLG-03T-C	Standard Line Liquid Level Gauge, 3" with Temp & Protective Cover	170	43
SLLG-05T	Standard Line Liquid Level Gauge, 5" with Temp	170	43
SLLG-05T-C	Standard Line Liquid Level Gauge, 5" with Temp & Protective Cover	170	43
SLLG-10T	Standard Line Liquid Level Gauge, 10" with Temp	170	43
SLLG-10T-C	Standard Line Liquid Level Gauge, 10" with Temp & Protective Cover	170	43
SLSG-100	Sight Glass Style Liquid Level Gauge	171	43
SP-A03x4-1/DZ	D03 Aluminum Super Saver Down Side Ported Subplate-Size 4 Threads	78	21
SP-A03x4-1/PZ	D03 Aluminum Super Saver Perimeter Ported Subplate-Size 4 Threads	77	21
SP-A03x6-1/BC	D03 Aluminum Bottom Ported Subplate-Size 6 Threads w/C-10-2 Common Cavity	81	21
SP-A03x6-1/BS	D03 Aluminum Bottom Ported Subplate-Size 6 Threads w/T-10A Sun Cavity	81	21
SP-A03x6-1/BZ	D03 Aluminum Bottom Ported Subplate-Size 6 Threads	81	21
SP-A03x6-1/C	D03 Aluminum Side Ported Subplate-Size 6 Threads w/C-10-2 Common Cavity	81	21
SP-A03x6-1/DZ	D03 Aluminum Super Saver Down Side Ported Subplate-Size 6 Threads	78	21
SP-A03x6-1/PZ	D03 Aluminum Super Saver Perimeter Ported Subplate-Size 6 Threads	77	21
SP-A03x6-1/S	D03 Aluminum Side Ported Subplate-Size 6 Threads w/T-10A Sun Cavity	81	21
SP-A03x6-1/Z	D03 Aluminum Side Ported Subplate-Size 6 Threads	81	21
SP-A03x8-1/BC	D03 Aluminum Bottom Ported Subplate-Size 8 Threads w/C-10-2 Common Cavity	81	21
SP-A03x8-1/BS	D03 Aluminum Bottom Ported Subplate-Size 8 Threads w/T-10A Sun Cavity	81	21
SP-A03x8-1/BZ	D03 Aluminum Bottom Ported Subplate-Size 8 Threads	81	21
SP-A03x8-1/C	D03 Aluminum Side Ported Subplate-Size 8 Threads w/C-10-2 Common Cavity	81	21
SP-A03x8-1/S	D03 Aluminum Side Ported Subplate-Size 8 Threads w/T-10A Sun Cavity	81	21
SP-A03x8-1/Z	D03 Aluminum Side Ported Subplate-Size 8 Threads	81	21
SP-A05x6-1/BC	D05 Aluminum Bottom Ported Subplate-Size 6 Threads w/C-10-2 Common Cavity	82	22
SP-A05x6-1/BS	D05 Aluminum Bottom Ported Subplate-Size 6 Threads w/T-10A Sun Cavity	82	22
SP-A05x6-1/BZ	D03 Aluminum Bottom Ported Subplate-Size 6 Threads	82	22
SP-A05x6-1/C	D05 Aluminum Side Ported Subplate-Size 6 Threads w/C-10-2 Common Cavity	82	22
SP-A05x6-1/DZ	D05 Aluminum Super Saver Down Side Ported Subplate-Size 6 Threads	80	21
SP-A05x6-1/PZ	D05 Aluminum Super Saver Perimeter Ported Subplate-Size 6 Threads	79	21
SP-A05x6-1/S	D05 Aluminum Side Ported Subplate-Size 6 Threads w/T-10A Sun Cavity	82	22
SP-A05x6-1/Z	D05 Aluminum Side Ported Subplate-Size 6 Threads	82	22
SP-A05x8-1/BC	D05 Aluminum Bottom Ported Subplate-Size 8 Threads w/C-10-2 Common Cavity	82	22
SP-A05x8-1/BS	D05 Aluminum Bottom Ported Subplate-Size 8 Threads w/T-10A Sun Cavity	82	22
SP-A05x8-1/BZ	D05 Aluminum Bottom Ported Subplate-Size 8 Threads	82	22
SP-A05x8-1/C	D05 Aluminum Side Ported Subplate-Size 8 Threads w/C-10-2 Common Cavity	82	22
SP-A05x8-1/DZ	D05 Aluminum Super Saver Down Side Ported Subplate-Size 8 Threads	80	21
SP-A05x8-1/PZ	D05 Aluminum Super Saver Perimeter Ported Subplate-Size 8 Threads	79	21
SP-A05x8-1/S	D05 Aluminum Side Ported Subplate-Size 8 Threads w/T-10A Sun Cavity	82	22
SP-A05x8-1/Z	D05 Aluminum Side Ported Subplate-Size 8 Threads	82	22
SP-A08x12-1/BC	D08 Aluminum Bottom Ported Subplate-Size 12 Threads w/C-10-2 Common Cavity	84	23
SP-A08x12-1/BS	D08 Aluminum Bottom Ported Subplate-Size 12 Threads w/T-3A Sun Cavity	84	23
SP-A08x12-1/BZ	D08 Aluminum Bottom Ported Subplate-Size 12 Threads	84	23
SP-A08x12-1/C	D08 Aluminum Side Ported Subplate-Size 12 Threads w/C-10-2 Common Cavity	84	23



What is it, Where is it Index

Part Number	Description	Catalog Page	Price Page
SP-A08x12-1/Z	D08 Aluminum Side Ported Subplate-Size 12 Threads	84	23
SP-A08x16-1/BC	D08 Aluminum Bottom Ported Subplate-Size 16 Threads w/C-10-2 Common Cavity	84	23
SP-A08x16-1/BS	D08 Aluminum Bottom Ported Subplate-Size 16 Threads w/T-3A Sun Cavity	84	23
SP-A08x16-1/BZ	D08 Aluminum Bottom Ported Subplate-Size 16 Threads	84	23
SP-A08x16-1/C	D08 Aluminum Side Ported Subplate-Size 16 Threads w/C-10-2 Common Cavity	84	23
SP-A08x16-1/S	D08 Aluminum Side Ported Subplate-Size 16 Threads w/T-3A Sun Cavity	84	23
SP-A08x16-1/Z	D08 Aluminum Side Ported Subplate-Size 16 Threads	84	23
SP-AH05x12-1/BC	D05 Aluminum High Flow Bottom Ported Subplate-Size 12 Threads w/C-10-2 Common Cavity	83	22
SP-AH05x12-1/BS	D05 Aluminum High Flow Bottom Ported Subplate-Size 12 Threads w/T-10A Sun Cavity	83	22
SP-AH05x12-1/BZ	D05 Aluminum High Flow Bottom Ported Subplate-Size 12 Threads	83	22
SP-AH05x12-1/C	D05 Aluminum High Flow Side Ported Subplate-Size 12 Threads w/C-10-2 Common Cavity	83	22
SP-AH05x12-1/S	D05 Aluminum High Flow Side Ported Subplate-Size 12 Threads w/T-10A Sun Cavity	83	22
SP-AH05x12-1/Z	D05 Aluminum High Flow Side Ported Subplate-Size 12 Threads	83	22
SP-S03x4-1/DZ	D03 Steel Super Saver Down Side Ported Subplate-Size 4 Threads	78	21
SP-S03x4-1/PZ	D03 Steel Super Saver Perimeter Ported Subplate-Size 4 Threads	77	21
SP-S03x6-1/BC	D03 Steel Bottom Ported Subplate-Size 6 Threads w/C-10-2 Common Cavity	81	21
SP-S03x6-1/BS	D03 Steel Bottom Ported Subplate-Size 6 Threads w/T-10A Sun Cavity	81	21
SP-S03x6-1/BZ	D03 Steel Bottom Ported Subplate-Size 6 Threads	81	21
SP-S03x6-1/C	D03 Steel Side Ported Subplate-Size 6 Threads w/C-10-2 Common Cavity	81	21
SP-S03x6-1/DZ	D03 Steel Super Saver Down Side Ported Subplate-Size 6 Threads	78	21
SP-S03x6-1/PZ	D03 Steel Super Saver Perimeter Ported Subplate-Size 6 Threads	77	21
SP-S03x6-1/S	D03 Steel Side Ported Subplate-Size 6 Threads w/T-10A Sun Cavity	81	21
SP-S03x6-1/Z	D03 Steel Side Ported Subplate-Size 6 Threads	81	21
SP-S03x8-1/BC	D03 Steel Bottom Ported Subplate-Size 8 Threads w/C-10-2 Common Cavity	81	21
SP-S03x8-1/BS	D03 Steel Bottom Ported Subplate-Size 8 Threads w/T-10A Sun Cavity	81	21
SP-S03x8-1/BZ	D03 Steel Bottom Ported Subplate-Size 8 Threads	81	21
SP-S03x8-1/C	D03 Steel Side Ported Subplate-Size 8 Threads w/C-10-2 Common Cavity	81	21
SP-S03x8-1/S	D03 Steel Side Ported Subplate-Size 8 Threads w/T-10A Sun Cavity	81	21
SP-S03x8-1/Z	D03 Steel Side Ported Subplate-Size 8 Threads	81	21
SP-S05x6-1/BC	D05 Steel Bottom Ported Subplate-Size 6 Threads w/C-10-2 Common Cavity	82	22
SP-S05x6-1/BS	D05 Steel Bottom Ported Subplate-Size 6 Threads w/T-10A Sun Cavity	82	22
SP-S05x6-1/BZ	D03 Steel Bottom Ported Subplate-Size 6 Threads	82	22
SP-S05x6-1/C	D05 Steel Side Ported Subplate-Size 6 Threads w/C-10-2 Common Cavity	82	22
SP-S05x6-1/DZ	D05 Steel Super Saver Down Side Ported Subplate-Size 6 Threads	80	21
SP-S05x6-1/PZ	D05 Steel Super Saver Perimeter Ported Subplate-Size 6 Threads	79	21
SP-S05x6-1/S	D05 Steel Side Ported Subplate-Size 6 Threads w/T-10A Sun Cavity	82	22
SP-S05x6-1/Z	D05 Steel Side Ported Subplate-Size 6 Threads	82	22
SP-S05x8-1/BC	D05 Steel Bottom Ported Subplate-Size 8 Threads w/C-10-2 Common Cavity	82	22
SP-S05x8-1/BS	D05 Steel Bottom Ported Subplate-Size 8 Threads w/T-10A Sun Cavity	82	22
SP-S05x8-1/BZ	D05 Steel Bottom Ported Subplate-Size 8 Threads	82	22
SP-S05x8-1/C	D05 Steel Side Ported Subplate-Size 8 Threads w/C-10-2 Common Cavity	82	22
SP-S05x8-1/DZ	D05 Steel Super Saver Down Side Ported Subplate-Size 8 Threads	80	21
SP-S05x8-1/PZ	D05 Steel Super Saver Perimeter Ported Subplate-Size 8 Threads	79	21
SP-S05x8-1/S	D05 Steel Side Ported Subplate-Size 8 Threads w/T-10A Sun Cavity	82	22
SP-S05x8-1/Z	D05 Steel Side Ported Subplate-Size 8 Threads	82	22
SP-S08x12-1/BC	D08 Steel Bottom Ported Subplate-Size 12 Threads w/C-10-2 Common Cavity	84	23
SP-S08x12-1/BS	D08 Steel Bottom Ported Subplate-Size 12 Threads w/T-3A Sun Cavity	84	23
SP-S08x12-1/BZ	D05 Aluminum Bottom Ported Subplate-Size 8 Threads	84	23
SP-S08x12-1/C	D05 Aluminum Side Ported Subplate-Size 8 Threads w/C-10-2 Common Cavity	84	23
SP-S08x12-1/S	D05 Aluminum Side Ported Subplate-Size 6 Threads w/T-10A Sun Cavity	84	23
SP-S08x12-1/Z	D05 Aluminum Side Ported Subplate-Size 6 Threads	84	23
SP-S08x16-1/BC	D05 Aluminum Bottom Ported Subplate-Size 8 Threads w/C-10-2 Common Cavity	84	23
SP-S08x16-1/BS	D05 Aluminum Bottom Ported Subplate-Size 8 Threads w/T-10A Sun Cavity	84	23
SP-S08x16-1/BZ	D05 Aluminum Bottom Ported Subplate-Size 8 Threads	84	23
SP-S08x16-1/C	D05 Aluminum Side Ported Subplate-Size 8 Threads w/C-10-2 Common Cavity	84	23
SP-S08x16-1/S	D05 Aluminum Side Ported Subplate-Size 8 Threads w/T-10A Sun Cavity	84	23
SP-S08x16-1/Z	D05 Aluminum Side Ported Subplate-Size 8 Threads	84	23
SP-SH05x12-1/BC	D08 Aluminum Bottom Ported Subplate-Size 12 Threads w/C-10-2 Common Cavity	84	22
SP-SH05x12-1/BS	D08 Aluminum Bottom Ported Subplate-Size 12 Threads w/T-3A Sun Cavity	84	22
SP-SH05x12-1/BZ	D08 Aluminum Bottom Ported Subplate-Size 12 Threads	84	22
SP-SH05x12-1/C	D08 Aluminum Side Ported Subplate-Size 12 Threads w/C-10-2 Common Cavity	84	22
SP-SH05x12-1/S	D08 Aluminum Side Ported Subplate-Size 12 Threads w/T-3A Sun Cavity	84	22

What is it, Where is it Index



Part Number	Description	Catalog Page	Price Page
SP-SH05x12-1/2	D08 Aluminum Side Ported Subplate-Size 12 Threads	84	22
SS-003P006-1-0	Suction Strainer, Internally Mounted, 3GPM, 100 Mesh, 3/8" NPT Outlet Port, No By-Pass	155	39
SS-005P008-1-*	Suction Strainer, Internally Mounted, 5GPM, 100 Mesh, 3/8" NPT Outlet Port, with By-Pass	155	39
SS-005P008-1-0	Suction Strainer, Internally Mounted, 5GPM, 100 Mesh, 1/2" NPT Outlet Port, No By-Pass	155	39
SS-008P012-*0	Suction Strainer, Internally Mounted, 8GPM, 100 Mesh, 3/4" NPT Outlet Port, No By-Pass	155	39
SS-008P012/P104-*0	Suction Strainer, 1 1/4" NPT Externally Mounted, 8GPM, 100 Mesh, 3/4" NPT Outlet Port, with By-Pass	156	39
SS-008P012/P104-*0	Suction Strainer, 1 1/4" NPT Externally Mounted, 8GPM, 100 Mesh, 3/4" NPT Outlet Port, No By-Pass	156	39
SS-014P100/P300-*0	Suction Strainer, Internally Mounted, 8GPM, 100 Mesh, 3/4" NPT Outlet Port, with By-Pass	155	39
SS-010P100-*0	Suction Strainer, Internally Mounted, 10GPM, 100 Mesh, 1" NPT Outlet Port, No By-Pass	155	39
SS-010P100-1-*	Suction Strainer, Internally Mounted, 10GPM, 100 Mesh, 1" NPT Outlet Port, with By-Pass	155	39
SS-014P100/P108-*0	Suction Strainer, 1 1/2" NPT Externally Mounted, 14GPM, 100 Mesh, 1" NPT Outlet Port, with By-Pass	156	39
SS-014P100/P108-*0	Suction Strainer, 1 1/2" NPT Externally Mounted, 14GPM, 100 Mesh, 1" NPT Outlet Port, No By-Pass	156	39
SS-014P100/P300-*0	Suction Strainer, 3" NPT Externally Mounted, 14GPM, 100 Mesh, 1" NPT Outlet Port, with By-Pass	156	39
SS-014P100/P300-*0	Suction Strainer, 3" NPT Externally Mounted, 14GPM, 100 Mesh, 1" NPT Outlet Port, No By-Pass	156	39
SS-014S020/P300-*0	Suction Strainer, 3" NPT Externally Mounted, 14GPM, 100 Mesh, #20 SAE Outlet Port, with By-Pass	156	39
SS-014S020/P300-*0	Suction Strainer, 3" NPT Externally Mounted, 14GPM, 100 Mesh, #20 SAE Outlet Port, No By-Pass	156	39
SS-021024/P300-*0	Suction Strainer, 3" NPT Externally Mounted, 21GPM, 100 Mesh, #24 SAE Outlet Port, with By-Pass	156	39
SS-21S024/P300-*0	Suction Strainer, 3" NPT Externally Mounted, 21GPM, 100 Mesh, #24 SAE Outlet Port, No By-Pass	156	39
SS-023P104-*0	Suction Strainer, Internally Mounted, 23GPM, 100 Mesh, 1 1/4" NPT Outlet Port, with By-Pass	155	39
SS-023P104-*0	Suction Strainer, Internally Mounted, 23GPM, 100 Mesh, 1 1/4" NPT Outlet Port, No By-Pass	155	39
SS-023P104/P200-*0	Suction Strainer, 2" NPT Externally Mounted, 23GPM, 100 Mesh, 1 1/4" NPT Outlet Port, with By-Pass	156	39
SS-023P104/P200-*0	Suction Strainer, 2" NPT Externally Mounted, 23GPM, 100 Mesh, 1 1/4" NPT Outlet Port, No By-Pass	156	39
SS023P104/P300-*0	Suction Strainer, 3" NPT Externally Mounted, 23GPM, 100 Mesh, 1 1/4" NPT Outlet Port, with By-Pass	156	39
SS-023P104/P300-*0	Suction Strainer, 3" NPT Externally Mounted, 23GPM, 100 Mesh, 1 1/4" NPT Outlet Port, No By-Pass	156	39
SS-032P108-*0	Suction Strainer, Internally Mounted, 32GPM, 100 Mesh, 1 1/2" NPT Outlet Port, with By-Pass	155	39
SS-023P108-*0	Suction Strainer, Internally Mounted, 32GPM, 100 Mesh, 1 1/2" NPT Outlet Port, No By-Pass	155	39
SS-032P108/P300-*0	Suction Strainer, 3" NPT Externally Mounted, 32GPM, 100 Mesh, 1 1/2" NPT Outlet Port, with By-Pass	156	39
SS-032P108/P300-*0	Suction Strainer, 3" NPT Externally Mounted, 32GPM, 100 Mesh, 1 1/2" NPT Outlet Port, No By-Pass	156	39
SS-053P200-*0	Suction Strainer, Internally Mounted, 53GPM, 100 Mesh, 2" NPT Outlet Port, with By-Pass	155	39
SS-053P200-*0	Suction Strainer, Internally Mounted, 53GPM, 100 Mesh, 2" NPT Outlet Port, No By-Pass	155	39
SS-053P200/P300-*0	Suction Strainer, 3" NPT Externally Mounted, 53GPM, 100 Mesh, 2" NPT Outlet Port, with By-Pass	156	39
SS-053P200/P300-*0	Suction Strainer, 3" NPT Externally Mounted, 53GPM, 100 Mesh, 2" NPT Outlet Port, No By-Pass	156	39
SS-053P200/P400-*0	Suction Strainer, 4" NPT Externally Mounted, 53GPM, 100 Mesh, 2" NPT Outlet Port, with By-Pass	156	39
SS-053P200/P400-*0	Suction Strainer, 4" NPT Externally Mounted, 53GPM, 100 Mesh, 2" NPT Outlet Port, No By-Pass	156	39
SS-075P208-*0	Suction Strainer, Internally Mounted, 75GPM, 100 Mesh, 2 1/2" NPT Outlet Port, with By-Pass	155	39
SS-075P208-*0	Suction Strainer, Internally Mounted, 75GPM, 100 Mesh, 2 1/2" NPT Outlet Port, No By-Pass	155	39
SS-075P208/P400-*0	Suction Strainer, 4" NPT Externally Mounted, 75GPM, 100 Mesh, 2 1/2" NPT Outlet Port, with By-Pass	156	39
SS-075P208/P400-*0	Suction Strainer, 4" NPT Externally Mounted, 75GPM, 100 Mesh, 2 1/2" NPT Outlet Port, No By-Pass	156	39
SS-116P300-*0	Suction Strainer, Internally Mounted, 116GPM, 100 Mesh, 3" NPT Outlet Port, with By-Pass	155	39
SS-116P300-*0	Suction Strainer, Internally Mounted, 116GPM, 100 Mesh, 3" NPT Outlet Port, No By-Pass	155	39
SSFE-003-067	Spin -On Filter Synthetic Media Element, 3 Micron, 1 1/2-16 UN Mounting Thread, 6.7" Length	159	40
SSFE-003-107	Spin -On Filter Synthetic Media Element, 3 Micron, 1 1/2-16 UN Mounting Thread, 10.7" Length	159	40
SSFE-010-067	Spin -On Filter Synthetic Media Element, 10 Micron, 1 1/2-16 UN Mounting Thread, 6.7" Length	159	40
SSFE-010-107	Spin -On Filter Synthetic Media Element, 10 Micron, 1 1/2-16 UN Mounting Thread, 10.7" Length	159	40
SSFE-025-067	Spin -On Filter Synthetic Media Element, 25 Micron, 1 1/2-16 UN Mounting Thread, 6.7" Length	159	40
SSFE-025-107	Spin -On Filter Synthetic Media Element, 25 Micron, 1 1/2-16 UN Mounting Thread, 10.7" Length	159	40
STTE-ASR-003-092-OI	Tank Top Filter Synthetic Media Element for AL S/R Line Series, 3 Micron, 9.19 Length, O/I Flow	164	42
STTE-ASR-003-182-OI	Tank Top Filter Synthetic Media Element for AL S/R Line Series, 3 Micron, 18.19 Length, O/I Flow	164	42
STTE-ASR-010-092-OI	Tank Top Filter Synthetic Media Element for AL S/R Line Series, 10 Micron, 9.19 Length, O/I Flow	164	42
STTE-ASR-010-182-OI	Tank Top Filter Synthetic Media Element for AL S/R Line Series, 10 Micron, 18.19 Length, O/I Flow	164	42
STTE-ITB-03A	Tank Top Filter Synthetic Media Element for Integral Breather Series, 3 Micron	161	41
STTE-ITB-10A	Tank Top Filter Synthetic Media Element for Integral Breather Series, 10 Micron	161	41
STTE-SSR-003-092-OI	Tank Top Filter Synthetic Media Element for SII S/R Line Series, 3 Micron, 9.19" Length, O/I Flow	165	42
STTE-SSR-003-182-OI	Tank Top Filter Synthetic Media Element for SII S/R Line Series, 3 Micron, 18.19" Length, O/I Flow	165	42
STTE-SSR-010-092-OI	Tank Top Filter Synthetic Media Element for SII S/R Line Series, 10 Micron, 9.19" Length, O/I Flow	165	42
STTE-SSR-010-182-OI	Tank Top Filter Synthetic Media Element for SII S/R Line Series, 10 Micron, 18.19" Length, O/I Flow	165	42
TD-014P008-D1	Tank Diffuser, 14GPM, 1/2" NPT Mounting Threads, 1.3" OD	157	40
TD-014P008-D2	Tank Diffuser, 14GPM, 1/2" NPT Mounting Threads, 3.2" OD	157	40
TD-025P012-D1	Tank Diffuser, 25GPM, 3/4" NPT Mounting Threads, 1.7" OD	157	40
TD-025P012-D2	Tank Diffuser, 25GPM, 3/4" NPT Mounting Threads, 3.2" OD	157	40



What is it, Where is it Index

Part Number	Description	Catalog Page	Price Page
TD-040P100-D1	Tank Diffuser, 40GPM, 1" NPT Mounting Threads, 1.9" OD	157	40
TD-040P100-D2	Tank Diffuser, 40GPM, 1" NPT Mounting Threads, 3.2" OD	157	40
TD-070P104-D1	Tank Diffuser, 70GPM, 1 1/4" NPT Mounting Threads, 3.2" OD	157	40
TD-095P108-D1	Tank Diffuser, 95GPM, 1 1/2" NPT Mounting Threads, 3.2" OD	157	40
TD-157P200-D1	Tank Diffuser, 157GPM, 2" NPT Mounting Threads, 4.2" OD	157	40
TD-224P208-D1	Tank Diffuser, 224GPM, 2 1/2" NPT Mounting Threads, 4.2" OD	157	40
TTF-ASR-B104/000-**-**-0	AI Tank Top Filter, S/R Line Series, 1 1/4" BSPT Left Port, No Right Port, By-Pass, Gauge Port, No Check Valve	163	41
TTF-ASR-B104/000-**-**-V	AI Tank Top Filter, S/R Line Series, 1 1/4" BSPT Left Port, No Right Port, By-Pass, Gauge Port, w/Check Valve	163	41
TTF-ASR-B104/000-00-00-0	AI Tank Top Filter, S/R Line Series, 1 1/4" BSPT Left Port, No Right Port, No By-Pass, No Gauge Port, No Check V	163	41
TTF-ASR-B104/000-00-00-V	AI Tank Top Filter, S/R Line Series, 1 1/4" BSPT Left Port, No Right Port, No By-Pass, No Gauge Port, w/Check V	163	41
TTF-ASR-B104/B104-**-**-0	AI Tank Top Filter, S/R Line Series, 1 1/4" BSPT Left and Right Ports, By-Pass, Gauge Port Location, No Check Valve	163	41
TTF-ASR-B104/B104-**-**-V	AI Tank Top Filter, S/R Line Series, 1 1/4" BSPT Left and Right Ports, By-Pass, Gauge Port Location, w/Check Valve	163	41
TTF-ASR-B104/B104-00-00-0	AI Tank Top Filter, S/R Line Series, 1 1/4" BSPT Left and Right Ports, No By-Pass, No Gauge Port, No Check Valve	163	41
TTF-ASR-B104/B104-00-00-V	AI Tank Top Filter, S/R Line Series, 1 1/4" BSPT Left and Right Ports, No By-Pass, No Gauge Port, w/Check Valve	163	41
TTF-ASR-P104/000-**-**-0	AI Tank Top Filter, S/R Line Series, 1 1/4" NPT Left Port, No Right Port, By-Pass, Gauge Port Location, No Check V	163	41
TTF-ASR-P104/000-**-**-V	AI Tank Top Filter, S/R Line Series, 1 1/4" NPT Left Port, No Right Port, By-Pass, Gauge Port Location, w/Check Valve	163	41
TTF-ASR-P104/000-00-00-0	AI Tank Top Filter, S/R Line Series, 1 1/4" NPT Left Port, No Right Port, No By-Pass, No Gauge Port, No Check Valve	163	41
TTF-ASR-P104/000-00-00-V	AI Tank Top Filter, S/R Line Series, 1 1/4" NPT Left Port, No Right Port, No By-Pass, No Gauge Port, w/Check Valve	163	41
TTF-ASR-P104/P104-**-**-0	AI Tank Top Filter, S/R Line Series, 1 1/4" NPT Left and Right Ports, By-Pass, Gauge Port Location, No Check Valve	163	41
TTF-ASR-P104/P104-**-**-V	AI Tank Top Filter, S/R Line Series, 1 1/4" NPT Left and Right Ports, By-Pass, Gauge Port Location, w/Check Valve	163	41
TTF-ASR-P104/P104-00-00-0	AI Tank Top Filter, S/R Line Series, 1 1/4" NPT Left and Right Ports, No By-Pass, No Gauge Port, No Check Valve	163	41
TTF-ASR-P104/P104-00-00-V	AI Tank Top Filter, S/R Line Series, 1 1/4" NPT Left and Right Ports, No By-Pass, No Gauge Port, w/Check Valve	163	41
TTF-ASR-P108/000-**-**-0	AI Tank Top Filter, S/R Line Series, 1 1/2" NPT Left Port, No Right Port, By-Pass, Gauge Port Location, No Check V	163	41
TTF-ASR-P108/000-**-**-V	AI Tank Top Filter, S/R Line Series, 1 1/2" NPT Left Port, No Right Port, By-Pass, Gauge Port Location, w/Check Valve	163	41
TTF-ASR-P108/000-00-00-0	AI Tank Top Filter, S/R Line Series, 1 1/2" NPT Left Port, No Right Port, No By-Pass, No Gauge Port, No Check Valve	163	41
TTF-ASR-P108/000-00-00-V	AI Tank Top Filter, S/R Line Series, 1 1/2" NPT Left Port, No Right Port, No By-Pass, No Gauge Port, w/Check Valve	163	41
TTF-ASR-P108/P104-**-**-0	AI Tank Top Filter, S/R Line Series, 1 1/2" NPT Left Port, 1 1/4" NPT Right Port, By-Pass, Gauge Port, No Check Valve	163	41
TTF-ASR-P108/P104-**-**-V	AI Tank Top Filter, S/R Line Series, 1 1/2" NPT Left Port, 1 1/4" NPT Right Port, By-Pass, Gauge Port, w/Check Valve	163	41
TTF-ASR-P108/P104-00-00-0	AI Tank Top Filter, S/R Line Series, 1 1/2" NPT L Port, 1 1/4" NPT R Port, No By-Pass, No Gauge Port, No Check V	163	41
TTF-ASR-P108/P104-00-00-V	AI Tank Top Filter, S/R Line Series, 1 1/2" NPT L Port, 1 1/4" NPT R Port, No By-Pass, No Gauge Port, w/Check V	163	41
TTF-ASR-P108/P108-**-**-0	AI Tank Top Filter, S/R Line Series, 1 1/2" BSPT Left and Right Ports, By-Pass, Gauge Port Location, No Check Valve	163	41
TTF-ASR-P108/P108-**-**-V	AI Tank Top Filter, S/R Line Series, 1 1/2" BSPT Left and Right Ports, By-Pass, Gauge Port Location, w/Check Valve	163	41
TTF-ASR-P108/P108-00-00-0	AI Tank Top Filter, S/R Line Series, 1 1/2" BSPT Left and Right Ports, No By-Pass, No Gauge Port, No Check Valve	163	41
TTF-ASR-P108/P108-00-00-V	AI Tank Top Filter, S/R Line Series, 1 1/2" BSPT Left and Right Ports, No By-Pass, No Gauge Port, w/Check Valve	163	41
TTF-ASR-S020/000-**-**-0	AI Tank Top Filter, S/R Line Series, #20 SAE Left Port, No Right Port, By-Pass, Gauge Port Location, No Check Valve	163	41
TTF-ASR-S020/000-**-**-V	AI Tank Top Filter, S/R Line Series, #20 SAE Left Port, No Right Port, By-Pass, Gauge Port Location, w/Check Valve	163	41
TTF-ASR-S020/000-00-00-0	AI Tank Top Filter, S/R Line Series, #20 SAE Left Port, No Right Port, No By-Pass, No Gauge Port, No Check Valve	163	41
TTF-ASR-S020/000-00-00-V	AI Tank Top Filter, S/R Line Series, #20 SAE Left Port, No Right Port, No By-Pass, No Gauge Port, w/Check Valve	163	41
TTF-ASR-S020/S020-**-**-0	AI Tank Top Filter, S/R Line Series, #20 SAE Left and Right Ports, By-Pass, Gauge Port Location, No Check Valve	163	41
TTF-ASR-S020/S020-**-**-V	AI Tank Top Filter, S/R Line Series, #20 SAE Left and Right Ports, By-Pass, Gauge Port Location, w/Check Valve	163	41
TTF-ASR-S020/S020-00-00-0	AI Tank Top Filter, S/R Line Series, #20 SAE Left and Right Ports, No By-Pass, No Gauge Port, No Check Valve	163	41
TTF-ASR-S020/S020-00-00-V	AI Tank Top Filter, S/R Line Series, #20 SAE Left and Right Ports, No By-Pass, No Gauge Port, w/Check Valve	163	41
TTF-ASR-S024/000-**-**-0	AI Tank Top Filter, S/R Line Series, #24 SAE Left Port, No Right Port, By-Pass, Gauge Port Location, No Check Valve	163	41
TTF-ASR-S024/000-**-**-V	AI Tank Top Filter, S/R Line Series, #24 SAE Left Port, No Right Port, By-Pass, Gauge Port Location, w/Check Valve	163	41
TTF-ASR-S024/000-00-00-0	AI Tank Top Filter, S/R Line Series, #24 SAE Left Port, No Right Port, No By-Pass, No Gauge Port, No Check Valve	163	41
TTF-ASR-S024/000-00-00-V	AI Tank Top Filter, S/R Line Series, #24 SAE Left Port, No Right Port, No By-Pass, No Gauge Port, w/Check Valve	163	41
TTF-ASR-S024/S024-**-**-0	AI Tank Top Filter, S/R Line Series, #24 SAE Left and Right Ports, By-Pass, Gauge Port Location, No Check Valve	163	41
TTF-ASR-S024/S024-**-**-V	AI Tank Top Filter, S/R Line Series, #24 SAE Left and Right Ports, By-Pass, Gauge Port Location, w/Check Valve	163	41
TTF-ASR-S024/S024-00-00-0	AI Tank Top Filter, S/R Line Series, #24 SAE Left and Right Ports, No By-Pass, No Gauge Port, No Check Valve	163	41
TTF-ASR-S024/S024-00-00-V	AI Tank Top Filter, S/R Line Series, #24 SAE Left and Right Ports, No By-Pass, No Gauge Port, w/Check Valve	163	41
TTF-ITB-B008-0	Tank Top Filter, Integral Breather Series, 1/2" BSP Inlet Port	160	41
TTF-ITB-B012-0	Tank Top Filter, Integral Breather Series, 3/4" BSP Inlet Port	160	41
TTF-ITB-P008-0	Tank Top Filter, Integral Breather Series, 1/2" NPT Inlet Port	160	41
TTF-ITB-P012-0	Tank Top Filter, Integral Breather Series, 3/4" NPT Inlet Port	160	41
TTF-ITB-S008-0	Tank Top Filter, Integral Breather Series, #8 SAE Inlet Port	160	41
TTF-ITB-S012-0	Tank Top Filter, Integral Breather Series, #12 SAE Inlet Port	160	41
TTF-SSR-B104/000-**-**-0	Stl Tank Top Filter, S/R Line Series, 1 1/4" BSPT Left Port, No Right Port, By-Pass, Gauge Port Location, No Check V	163	41
TTF-SSR-B104/000-**-**-V	Stl Tank Top Filter, S/R Line Series, 1 1/4" BSPT Left Port, No Right Port, By-Pass, Gauge Port Location, w/Check V	163	41
TTF-SSR-B104/000-00-00-0	Stl Tank Top Filter, S/R Line Series, 1 1/4" BSPT L Port, No R Port, No By-Pass, No Gauge Port, No Check Valve	163	41
TTF-SSR-B104/000-00-00-V	Stl Tank Top Filter, S/R Line Series, 1 1/4" BSPT L Port, No R Port, No By-Pass, No Gauge Port, w/Check Valve	163	41

What is it, Where is it Index



Part Number	Description	Catalog Page	Price Page
TTF-SSR-B104/B104-***-0	Stl Tank Top Filter, S/R Line Series, 1 1/4" BSPT Left and Right Ports, By-Pass, Gauge Port Location, No Check Valve	163	41
TTF-SSR-B104/B104-***-V	Stl Tank Top Filter, S/R Line Series, 1 1/4" BSPT Left and Right Ports, By-Pass, Gauge Port Location, w/Check Valve	163	41
TTF-SSR-B104/B104-00-00-0	Stl Tank Top Filter, S/R Line Series, 1 1/4" BSPT Left and Right Ports, No By-Pass, No Gauge Port, No Check Valve	163	41
TTF-SSR-B104/B104-00-00-V	Stl Tank Top Filter, S/R Line Series, 1 1/4" BSPT Left and Right Ports, No By-Pass, No Gauge Port, w/Check Valve	163	41
TTF-SSR-P104/000-***-0	Stl Tank Top Filter, S/R Line Series, 1 1/4" NPT Left Port, No Right Port, By-Pass, Gauge Port, No Check Valve	163	41
TTF-SSR-P104/000-***-V	Stl Tank Top Filter, S/R Line Series, 1 1/4" NPT Left Port, No Right Port, By-Pass, Gauge Port, w/Check Valve	163	41
TTF-SSR-P104/000-00-00-0	Stl Tank Top Filter, S/R Line Series, 1 1/4" NPT Left Port, No Right Port, No By-Pass, No Gauge Port, No Check Valve	163	41
TTF-SSR-P104/000-00-00-V	Stl Tank Top Filter, S/R Line Series, 1 1/4" NPT Left Port, No Right Port, No By-Pass, No Gauge Port, No Check Valve	163	41
TTF-SSR-P104/P104-***-0	Stl Tank Top Filter, S/R Line Series, 1 1/4" NPT Left and Right Ports, No By-Pass, No Gauge Port, No Check Valve	163	41
TTF-SSR-P104/P104-***-V	Stl Tank Top Filter, S/R Line Series, 1 1/4" NPT Left and Right Ports, By-Pass, Gauge Port Location, w/Check Valve	163	41
TTF-SSR-P104/P104-00-00-0	Stl Tank Top Filter, S/R Line Series, 1 1/4" NPT Left and Right Ports, No By-Pass, No Gauge Port, No Check Valve	163	41
TTF-SSR-P104/P104-00-00-V	Stl Tank Top Filter, S/R Line Series, 1 1/4" NPT Left and Right Ports, By-Pass, Gauge Port Location, w/Check Valve	163	41
TTF-SSR-P108/000-***-0	Stl Tank Top Filter, S/R Line Series, 1 1/2" NPT Left Port, No Right Port, No By-Pass, No Gauge Port, No Check Valve	163	41
TTF-SSR-P108/000-***-V	Stl Tank Top Filter, S/R Line Series, 1 1/2" NPT Left Port, No Right Port, No By-Pass, No Gauge Port, w/Check Valve	163	41
TTF-SSR-P108/000-00-00-0	Stl Tank Top Filter, S/R Line Series, 1 1/2" NPT Left Port, No Right Port, No By-Pass, No Gauge Port, No Check Valve	163	41
TTF-SSR-P108/000-00-00-V	Stl Tank Top Filter, S/R Line Series, 1 1/2" NPT Left Port, No Right Port, By-Pass, Gauge Port L, w/Check Valve	163	41
TTF-SSR-P108/P104-***-0	Stl Tank Top Filter, S/R Line Series, 1 1/2" NPT L Port, 1 1/4" NPT R Port, No By-Pass, No Gauge Port, No Check V	163	41
TTF-SSR-P108/P104-***-V	Stl Tank Top Filter, S/R Line Series, 1 1/2" NPT Left Port, 1 1/4" NPT Right Port, By-Pass, Gauge Port, w/Check Valve	163	41
TTF-SSR-P108/P104-00-00-0	Stl Tank Top Filter, S/R Line Series, 1 1/2" NPT L Port, 1 1/4" NPT R Port, No By-Pass, No Gauge Port, No Check V	163	41
TTF-SSR-P108/P104-00-00-V	Stl Tank Top Filter, S/R Line Series, 1 1/2" NPT Left Port, 1 1/4" NPT Right Port, By-Pass, Gauge Port, w/Check Valve	163	41
TTF-SSR-P108/P108-***-0	Stl Tank Top Filter, S/R Line Series, 1 1/2" BSPT Left and Right Ports, By-Pass , Gauge Port Location, No Check V	163	41
TTF-SSR-P108/P108-***-V	Stl Tank Top Filter, S/R Line Series, 1 1/2" BSPT Left and Right Ports, No By-Pass, No Gauge Port, w/Check Valve	163	41
TTF-SSR-P108/P108-00-00-0	Stl Tank Top Filter, S/R Line Series, 1 1/2" BSPT Left and Right Ports, No By-Pass, No Gauge Port, No Check Valve	163	41
TTF-SSR-P108/P108-00-00-V	Stl Tank Top Filter, S/R Line Series, 1 1/2" BSPT Left and Right Ports, By-Pass , Gauge Port Location, w/Check Valve	163	41
TTF-SSR-S020/000-***-0	Stl Tank Top Filter, S/R Line Series, #20 SAE Left Port, No Right Port, No By-Pass, No Gauge Port, No Check Valve	163	41
TTF-SSR-S020/000-***-V	Stl Tank Top Filter, S/R Line Series, #20 SAE Left Port, No Right Port, By-Pass, Gauge Port Location, w/Check Valve	163	41
TTF-SSR-S020/000-00-00-0	Stl Tank Top Filter, S/R Line Series, #20 SAE Left Port, No Right Port, No By-Pass, No Gauge Port, No Check Valve	163	41
TTF-SSR-S020/000-00-00-V	Stl Tank Top Filter, S/R Line Series, #20 SAE Left Port, No Right Port, By-Pass, Gauge Port Location, w/Check Valve	163	41
TTF-SSR-S020/S020-***-0	Stl Tank Top Filter, S/R Line Series, #20 SAE Left and Right Ports, By-Pass, Gauge Port Location, No Check Valve	163	41
TTF-SSR-S020/S020-***-V	Stl Tank Top Filter, S/R Line Series, #20 SAE Left and Right Ports, By-Pass, Gauge Port Location, w/Check Valve	163	41
TTF-SSR-S020/S020-00-00-0	Stl Tank Top Filter, S/R Line Series, #20 SAE Left and Right Ports, No By-Pass, No Gauge Port, No Check Valve	163	41
TTF-SSR-S020/S020-00-00-V	Stl Tank Top Filter, S/R Line Series, #20 SAE Left and Right Ports, No By-Pass, No Gauge Port, w/Check Valve	163	41
TTF-SSR-S024/000-***-0	Stl Tank Top Filter, S/R Line Series, #24 SAE Left Port, No Right Port, No By-Pass, No Gauge Port, No Check Valve	163	41
TTF-SSR-S024/000-***-V	Stl Tank Top Filter, S/R Line Series, #24 SAE Left Port, No Right Port, By-Pass, Gauge Port Location, w/Check Valve	163	41
TTF-SSR-S024/000-00-00-0	Stl Tank Top Filter, S/R Line Series, #24 SAE Left Port, No Right Port, No By-Pass, No Gauge Port, No Check Valve	163	41
TTF-SSR-S024/000-00-00-V	Stl Tank Top Filter, S/R Line Series, #24 SAE Left Port, No Right Port, By-Pass, Gauge Port Location, w/Check Valve	163	41
TTF-SSR-S024/S024-***-0	Stl Tank Top Filter, S/R Line Series, #24 SAE Left and Right Ports, By-Pass, Gauge Port Location, No Check Valve	163	41
TTF-SSR-S024/S024-***-V	Stl Tank Top Filter, S/R Line Series, #24 SAE Left and Right Ports, By-Pass, Gauge Port Location, w/Check Valve	163	41
TTF-SSR-S024/S024-00-00-0	Stl Tank Top Filter, S/R Line Series, #24 SAE Left and Right Ports, No By-Pass, No Gauge Port, No Check Valve	163	41
TTF-SSR-S024/S024-00-00-V	Stl Tank Top Filter, S/R Line Series, #24 SAE Left and Right Ports, No By-Pass, No Gauge Port, w/Check Valve	163	41
VA-A03/05-EAA	D03 to D05 Aluminum Valve Adaptor	93	24
VA-A03/05-EBA	D03 to D05 Aluminum Valve Adaptor	93	24
VA-A03/05-MAA	D03 to D05 Aluminum Valve Adaptor	93	24
VA-A03/05-MBA	D03 to D05 Aluminum Valve Adaptor	93	24
VA-A05/08-EAA	D05 to D08 Aluminum Valve Adaptor	94	24
VA-A05/08-MAA	D05 to D08 Aluminum Valve Adaptor	94	24
VA-AF6/F7-EAA	2F06 to 2F07 Aluminum Valve Adaptor	95	24
VA-AF6/F7-MAA	2F06 to 2F07 Aluminum Valve Adaptor	95	24
VA-AP8/P0-EAA	P08 to P10 Aluminum Valve Adaptor	96	24
VA-AP8/P0-MAA	P08 to P10 Aluminum Valve Adaptor	96	24
VA-S03/05-EAA	D03 to D05 Steel Valve Adaptor	93	24
VA-S03/05-EBA	D03 to D05 Steel Valve Adaptor	93	24
VA-S03/05-MAA	D03 to D05 Steel Valve Adaptor	93	24
VA-S03/05-MBA	D03 to D05 Steel Valve Adaptor	93	24
VA-S05/08-EAA	D05 to D08 Steel Valve Adaptor	94	24
VA-S05/08-MAA	D05 to D08 Steel Valve Adaptor	94	24
VA-SF6/F7-EAA	2F06 to 2F07 Steel Valve Adaptor	95	24
VA-SF6/F7-MAA	2F06 to 2F07 Steel Valve Adaptor	95	24
VA-SP8/P0-EAA	P08 to P10 Steel Valve Adaptor	96	24
VA-SP8/P0-MAA	P08 to P10 Steel Valve Adaptor	96	24

Make the Connection with **magnaloy**

*Whatever your Fluid Power Unit needs,
magnaloy has the products
to keep you connected.*



Flexible Drive Couplings

Top-of-the-line magnesium couplings are lighter, yet stronger than either cast iron or aluminum. They also offer better corrosion resistance and easier handling.



Magnaloy Hydraulic Bar Manifolds & Accessories

Complete line of In-line Bar Manifolds, Subplates, Cover Plates, Valve Adaptors, Integrated Circuit Manifolds, and Accessories to make the design and fabrication of Hydraulic Circuitry simple and easy. Wide range of sizes include: D03, D05, D05H & D08 in aluminum and steel with ports available in SAE, NPTF, BSPP, and BSPT styles. Custom design and fabrication also available, consult factory.

Accessories

Filler Breather Adaptors, Filler Breathers, Reservoir Flanges, Suction Strainers, Gauge Isolators, Liquid Level Gauges, Modular O-Ring Kits.

Pump/Motor Mounts

Precision machined aluminum & custom steel pump/motor mounts directly connect the motor and pump while ensuring accurate shaft alignment and enclosing the coupling. Vertical and horizontal models readily available from stock.



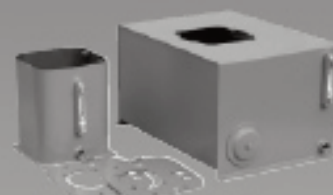
Rod End Couplers

Two models of accurately machined high tensile cylinder rod end alignment couplers offer 7° or 10° spherical and 1/8" parallel misalignment capabilities.



PM 90 Couplings

Economical PM-90 Iron Powder Couplings have long lasting nitrile, hytrel or urethane inserts. Double set screws give excellent gripping power.



Magnaloy Reservoirs & Reservoir Accessories

Magnaloy offers a complete line of standard reservoirs and reservoir accessories. In addition, we offer custom reservoir fabrication to meet our customer specific needs. Reservoir accessories such as Clean Out Covers and SAE Couplings are available for the "do-it-yourself" reservoir manufacturer.



Magnaloy Pressure Switch

Pressure Sensing switch capable of sensing up to three (3) separate pressures. Each sensor is externally independently adjustable from 200 to 4000 psi. Viton seals provide wide fluid compatibility range.