



LIST PRICES
 Effective Oct 7, 2013
 Subject to change
 upon notice

**Flexible Drive Couplings PM 90 Couplings Pump/Motor Mounts
 Hydraulic Manifolds & Manifold Accessories
 Reservoirs Reservoir Accessories Rod End Alignment Couplers Price List**



Full Product/Price Index
 On Inside Coveri

PREMIUM FLEXIBLE
 DRIVE COUPLINGS ...1,2

PM 90 COUPLINGS3

PUMP/MOTOR
 MOUNTS4-10

BAR MANIFOLDS ...10-19

INTEGRATED CIRCUIT
 BAR MANIFOLDS20

SUBPLATES21-23

COVER PLATES23

VALVE ADAPTORS24

ISOLATION PLUGS24

MANIFOLD
 ACCESSORIES25

HEADER BAR
 MANIFOLDS26-28

JUNCTION BAR
 MANIFOLDS29-31

RESERVOIRS32-37

RESERVOIR
 ACCESSORIES37-47

ROD END ALIGNMENT
 COUPLERS47

What is it, Where is it
 Index48-73



| | |
|--|----|
| PREMIUM FLEXIBLE DRIVE COUPLINGS | |
| Coupling Hubs and Inserts | 1 |
| PM 90 FLEXIBLE DRIVE COUPLINGS | |
| Coupling Hubs and Inserts | 3 |
| PUMP/MOTOR MOUNTS | |
| Horizontal Aluminum Pump/Motor Mounts | 4 |
| Vertical Aluminum Pump/Motor Mounts | 6 |
| Aluminum Pump/Engine Mounts | 7 |
| Welded Steel Horizontal Mounts | 8 |
| Welded Steel Pump/Engine Mounts | 8 |
| Welded Steel Vertical Pump/Motor Mounts | 9 |
| Service Window Covers | 10 |
| BAR MANIFOLDS | |
| D03 Standard Design | 10 |
| D03 Standard Flow Retro Design Parallel | 12 |
| D03 High Flow Retro Design Parallel | 13 |
| D05 Standard Design..... | 15 |
| D05 High Flow Standard Design Parallel | 16 |
| D08 Standard Design..... | 18 |
| D08 High Flow Retro Design..... | 19 |
| INTEGRATED CIRCUIT BAR MANIFOLDS | 20 |
| SUBPLATES | |
| D03 Super Saver & Side Ported | 21 |
| D05 Super Saver & Side Ported | 21 |
| D08 Side Ported | 23 |
| COVER PLATES | |
| D03, D05 & D08 Cover Plates | 23 |
| VALVE ADAPTORS | 24 |
| ISOLATION PLUGS | 24 |
| MANIFOLD ACCESSORIES | |
| Pilot Adaptors, Unloading Modules, Orifice Plates, Tapping Plated..... | 25 |
| Relief Valve Cartridges | 25 |
| HEADER BAR MANIFOLDS | |
| 0 Degree | 26 |
| 90 Degree | 27 |
| 180 Degree | 28 |
| JUNCTION BAR MANIFOLDS | |
| 90 Degree | 29 |
| 180 Degree | 30 |
| 270 Degree | 31 |
| RESERVOIRS | |
| Vertical Econo & Dual Reservoirs | 32 |
| JIC Reservoirs | 33 |
| L Series Reservoirs | 33 |
| T Series Reservoirs | 34 |
| Horizontal Series Reservoirs | 35 |
| DIN Style Reservoirs | 35 |
| Drip Pans & Stacking Modules for JIC Reservoirs | 36 |
| End Covers | 37 |
| RESERVOIR ACCESSORIES | |
| Filler Breathers | 38 |
| Reservoir Flanges | 39 |
| SAE Full & Half Couplings | 40 |
| Channel Mounted Cushion Clamps | 40 |
| Modular Stackable Cushion Clamps | 40 |
| Clamp Anchor Channel | 41 |
| Suction Strainers | 41 |
| Tank Diffusers | 42 |
| Filter Heads & Elements | 42 |
| Pressure Gauges | 44 |
| Gauge Isolators | 45 |
| Pressure Switch | 45 |
| Liquid Level Gauges | 45 |
| Motor Base Plates | 45 |
| Motor Dampening Bars | 46 |
| Modular O'Ring Kit | 47 |
| ROD END COUPLERS M and R Series | 47 |
| What is it, Where is it Index | 48 |

Modular O-Ring Kits

| Part Number | Description | List Price |
|-------------|------------------|------------|
| ORK-12000 | Buna O-Ring Kit | \$475.80 |
| ORK-12001 | Viton O-Ring Kit | \$1,344.00 |

Motor Dampening Bar Weld Pad Kits*

| Part Number | Description | List Price |
|--------------|---------------------------------------|------------|
| MWP056-256 | 056C thru 256TC Motor Frames | \$52.70 |
| MWP284-286 | 284TC/TSC thru 286TC/TSC Motor Frames | \$75.10 |
| MWP324-365 | 324TC/TSC thru 365TC/TSC Motor Frames | \$75.10 |
| MWP404-405 | 404TC/TSC thru 405TC/TSC Motor Frames | \$88.00 |
| MWP444-449 | 444TC/TSC thru 449TC/TSC Motor Frames | \$105.60 |
| MWP071-132M | IEC 071 thru IEC 132 M Motor Size | \$52.70 |
| MWP160M-180L | IEC 160 M thru IEC 180 L Motor Size | \$75.10 |
| MWP200L-315L | IEC 200 L thru IEC 315 L Motor Size | \$75.10 |

* Kit includes 4 Weld Pads only.
Order Bolt Down Series Dampening Bars separately.

Rod End Couplers

| M-Series Rod End Couplers | | |
|---------------------------|--------------------------|------------|
| Part Number | Description | List Price |
| M010-01024 | M Series 5/16-24 Thread | \$32.90 |
| M010-01224 | M Series 3/8-24 Thread | \$32.90 |
| M015-01420 | M Series 7/16-20 Thread | \$31.90 |
| M015-01620 | M Series 1/2-20 Thread | \$32.90 |
| M020-02018 | M Series 5/8-18 Thread | \$55.90 |
| M020-02416 | M Series 3/4-16 Thread | \$54.10 |
| M020-02814 | M Series 7/8-14 Thread | \$55.90 |
| M030-10014 | M Series 1-14 Thread | \$86.10 |
| M040-10812 | M Series 1 1/4-12 Thread | \$133.40 |
| M050-11612 | M Series 1 1/2-12 Thread | \$226.50 |
| M050-12412 | M Series 1 3/4-12 Thread | \$226.50 |
| M060-12812 | M Series 1 7/8-12 Thread | \$343.00 |
| M060-20012 | M Series 2-12 Thread | \$343.00 |
| M070-20812 | M Series 2 1/4-12 Thread | \$765.40 |
| M080-21612 | M Series 2 1/2-12 Thread | \$1006.30 |
| M080-22412 | M Series 2 3/4-12 Thread | \$1006.30 |
| M080-30012 | M Series 3-12 Thread | \$1006.30 |
| M100-30812 | M Series 3 1/4-12 Thread | Quote |
| M140-40812 | M Series 4 1/4-12 Thread | Quote |

| R-Series Rod End Couplers | | |
|---------------------------|--------------------------|------------|
| Part Number | Description | List Price |
| R010-01024 | R Series 5/16-24 Thread | \$28.50 |
| R010-01224 | R Series 3/8-24 Thread | \$28.50 |
| R020-01420 | R Series 7/16-20 Thread | \$30.60 |
| R020-01620 | R Series 1/2-20 Thread | \$30.60 |
| R020-02018 | R Series 5/8-18 Thread | \$41.90 |
| R030-02416 | R Series 3/4-16 Thread | \$47.60 |
| R030-02814 | R Series 7/8-14 Thread | \$47.60 |
| R040-10014 | R Series 1-14 Thread | \$79.80 |
| R040-10812 | R Series 1 1/4-12 Thread | \$104.30 |

For Availability of Other Series / Thread Combinations, Consult Factory



What is it, Where is it Index

| Part Number | Description | Catalog Page | Price Page |
|--------------------|--|--------------|------------|
| 056 | NEMA 056 Motor Mount Service Window Cover | 18 | 10 |
| 10S | SAE half Coupling, #10 SAE | 144 | 38 |
| 10S-8N | SAE to NPT Full Coupling, #10 SAE to 1/4" NPT | 144 | 38 |
| 10S-8W | SAE to Socket Weld Full Coupling, #10 SAE to 1/2" Pipe | 144 | 38 |
| 12S | SAE half Coupling, #12 SAE | 144 | 38 |
| 12S-12N | SAE to NPT Full Coupling, #12 SAE to 3/4" NPT | 144 | 38 |
| 12S-12W | SAE to Socket Weld Full Coupling, #12 SAE to 3/4" Pipe | 144 | 38 |
| 16S | SAE half Coupling, #16 SAE | 144 | 38 |
| 16S-16N | SAE to NPT Full Coupling, #16 SAE to 1" NPT | 144 | 38 |
| 16S-16W | SAE to Socket Weld Full Coupling, #16 SAE to 1" Pipe | 144 | 38 |
| 182-1 | NEMA 182-1 Motor Mount Service Window Cover | 18 | 10 |
| 182-2 | NEMA 182-2 Motor Mount Service Window Cover | 18 | 10 |
| 182-3 | NEMA 182-3 Motor Mount Service Window Cover | 18 | 10 |
| 182-4 | NEMA 182-4 Motor Mount Service Window Cover | 18 | 10 |
| 20S | SAE half Coupling, #20 SAE | 144 | 38 |
| 20S-20W | SAE to Socket Weld Full Coupling, #20 SAE to 1 1/4" Pipe | 144 | 38 |
| 24S | SAE half Coupling, #24 SAE | 144 | 38 |
| 24S-24W | SAE to Socket Weld Full Coupling, #24 SAE to 1 1/2" Pipe | 144 | 38 |
| 284-1 | NEMA 284-1 Motor Mount Service Window Cover | 18 | 10 |
| 284-2 | NEMA 284-2 Motor Mount Service Window Cover | 18 | 10 |
| 284-3 | NEMA 284-3 Motor Mount Service Window Cover | 18 | 10 |
| 324-1 | NEMA 324-1 Motor Mount Service Window Cover | 18 | 10 |
| 324-2 | NEMA 324-2 Motor Mount Service Window Cover | 18 | 10 |
| 324-3 | NEMA 324-3 Motor Mount Service Window Cover | 18 | 10 |
| 324-4 | NEMA 324-4 Motor Mount Service Window Cover | 18 | 10 |
| 324-5 | NEMA 324-5 Motor Mount Service Window Cover | 18 | 10 |
| 444-1 | NEMA 444-1 Motor Mount Service Window Cover | 18 | 10 |
| 444-2 | NEMA 444-2 Motor Mount Service Window Cover | 18 | 10 |
| 444-3 | NEMA 444-3 Motor Mount Service Window Cover | 18 | 10 |
| 4S | SAE half Coupling, #4 SAE | 144 | 38 |
| 4S-4N | SAE to NPT Full Coupling, #4 SAE to 1/4" NPT | 144 | 38 |
| 6S | SAE half Coupling, #6 SAE | 144 | 38 |
| 6S-6N | SAE to NPT Full Coupling, #6 SAE to 3/8" NPT | 144 | 38 |
| 8S | SAE half Coupling, #8 SAE | 144 | 38 |
| 8S-8N | SAE to NPT Full Coupling, #8 SAE to 1/2" NPT | 144 | 38 |
| 8S-8W | SAE to Socket Weld Full Coupling, #8 SAE to 1/2" Pipe | 144 | 38 |
| BK-A03 | D03 Manifold Mounting Bracket | 195 | 11 |
| BK-A05 | D05 Manifold Mounting Bracket | 195 | 15 |
| BK-A08 | D08 Manifold Mounting Bracket | 195 | 18 |
| BK-IC08 | D08 Integrated Circuit Mounting Bracket | 195 | 20 |
| BM-AHP05x3-xx-x/x | D05 Aluminum High Flow Parallel Bar Manifold-3 1/4" Spacing | 60 | 16 |
| BM-AHP05x5-xx-x/x | D05 Aluminum High Flow Parallel Bar Manifold-5" Spacing | 60 | 16 |
| BM-AHP5E3-xx-x/x | D05 E Alt A Aluminum High Flow Parallel Bar Manifold-3 1/4" Spacing | 62 | 17 |
| BM-AHP5E5-xx-x/x | D05 E Alt A Aluminum High Flow Parallel Bar Manifold-5" Spacing | 62 | 17 |
| BM-AHP5H3-xx-x/x | D05 H Alt B Aluminum High Flow Parallel Bar Manifold-3 1/4" Spacing | 64 | 17 |
| BM-AHP5H5-xx-x/x | D05 H Alt B Aluminum High Flow Parallel Bar Manifold-5" Spacing | 64 | 17 |
| BM-ASP03x2-xx-x/x | D03 Aluminum Standard Flow Parallel Bar Manifold-2" Spacing | 48 | 10 |
| BM-ASP03x4-xx-x/x | D03 Aluminum Standard Flow Parallel Bar Manifold-4" Spacing | 48 | 11 |
| BM-ASP05x3-xx-x/x | D05 Aluminum Standard Flow Parallel Bar Manifold-3 1/4" Spacing | 56 | 15 |
| BM-ASP05x5-xx-x/x | D05 Aluminum Standard Flow Parallel Bar Manifold-5" Spacing | 56 | 15 |
| BM-ASP08x5-xx-x/x | D08 Aluminum Standard Flow Parallel Bar Manifold-5 1/4" Spacing | 66 | 18 |
| BM-ASP08x7-xx-x/x | D08 Aluminum Standard Flow Parallel Bar Manifold-7" Spacing | 66 | 18 |
| BM-ASS03x2-xx-x/x | D03 Aluminum Standard Flow Series Bar Manifold | 50 | 11 |
| BM-ASS05x3-xx-x/x | D05 Aluminum Standard Flow Series Bar Manifold-3 1/4" Spacing | 58 | 15 |
| BM-ASS05x5-xx-x/x | D05 Aluminum Standard Flow Series Bar Manifold-5" Spacing | 58 | 15 |
| BM-ASS08x7-xx-x/x | D08 Aluminum Standard Flow Series Bar Manifold-7" Spacing | 70 | 19 |
| BMR-AHP03x2-xx-x/x | D03 Retro Design Aluminum High Flow Parallel Bar Manifold-2 1/8" Spacing | 54 | 13 |
| BMR-AHP03x4-xx-x/x | D03 Retro Design Aluminum High Flow Parallel Bar Manifold-4" Spacing | 54 | 13 |
| BMR-AHP08x5-xx-x/x | D08 Retro Design Aluminum High Flow Parallel Bar Manifold-5 1/4" Spacing | 68 | 19 |
| BMR-AHP08x7-xx-x/x | D08 Retro Design Aluminum High Flow Parallel Bar Manifold-7" Spacing | 68 | 19 |

What is it, Where is it Index



| Part Number | Description | Catalog Page | Price Page |
|------------------------|---|--------------|------------|
| BMR-ASP03x2-xx-x/x | D03 Retro Design Aluminum Standard Flow Parallel Bar Manifold-2 1/8" Spacing | 52 | 12 |
| BMR-ASP03x4-xxx-x/x | D03 Retro Design Aluminum Standard Flow Parallel Bar Manifold-4" Spacing | 52 | 12 |
| BMR-SHP03x2-xx-x/x | D03 Retro Design Steel High Flow Parallel Bar Manifold-2 1/8" Spacing | 54 | 13 |
| BMR-SHP03x4-xx-x/x | D03 Retro Design Steel High Flow Parallel Bar Manifold-4" Spacing | 54 | 13 |
| BMR-SHP08x5-xx-x/x | D08 Retro Design Steel High Flow Parallel Bar Manifold-5 1/4" Spacing | 68 | 19 |
| BMR-SHP08x7-xx-x/x | D08 Retro Design Steel High Flow Parallel Bar Manifold-7" Spacing | 68 | 19 |
| BMR-SSP03x2-xx-x/x | D03 Retro Design Steel Standard Flow Parallel Bar Manifold-2 1/8" Spacing | 52 | 12 |
| BMR-SSP03x4-xx-x/x | D03 Retro Design Steel Standard Flow Parallel Bar Manifold-4" Spacing | 52 | 12 |
| BM-SHP05x3-xx-x/x | D05 Steel High Flow Parallel Bar Manifold-3 1/4" Spacing | 60 | 16 |
| BM-SHP05x5-xx-x/x | D05 Steel High Flow Parallel Bar Manifold-5" Spacing | 60 | 16 |
| BM-SHP5Ex3-xx-x/x | D05 E Alt A Steel High Flow Parallel Bar Manifold-3 1/4" Spacing | 62 | 17 |
| BM-SHP5Ex5-xx-x/x | D05 E Alt A Steel High Flow Parallel Bar Manifold-5" Spacing | 62 | 17 |
| BM-SHP5Hx3-xx-x/x | D05 H Alt B Steel High Flow Parallel Bar Manifold-3 1/4" Spacing | 64 | 17 |
| BM-SHP5Hx5-xx-x/x | D05 H Alt B Steel High Flow Parallel Bar Manifold-5" Spacing | 64 | 17 |
| BM-SSP03x2-xx-x/x | D03 Steel Standard Flow Parallel Bar Manifold-2" Spacing | 48 | 10 |
| BM-SSP03x4-xx-x/x | D03 Steel Standard Flow Parallel Bar Manifold-4" Spacing | 48 | 11 |
| BM-SSP05x3-xx-x/x | D05 Steel Standard Flow Parallel Bar Manifold-3 1/4" Spacing | 56 | 15 |
| BM-SSP05x5-xx-x/x | D05 Steel Standard Flow Parallel Bar Manifold-5" Spacing | 56 | 15 |
| BM-SSP08x5-xx-x/x | D08 Steel Standard Flow Parallel Bar Manifold-5 1/4" Spacing | 66 | 18 |
| BM-SSP08x7-xx-x/x | D08 Steel Standard Flow Parallel Bar Manifold-7" Spacing | 66 | 18 |
| BM-SSS03x2-xx-x/x | D03 Steel Standard Flow Series Bar Manifold | 50 | 11 |
| BM-SSS05x3-xx-x/x | D05 Steel Standard Flow Series Bar Manifold-3 1/4" Spacing | 58 | 15 |
| BM-SSS05x5-xx-x/x | D05 Steel Standard Flow Series Bar Manifold-5" Spacing | 58 | 15 |
| BM-SSS08x7-xx-x/x | D08 Steel Standard Flow Series Bar Manifold-7" Spacing | 70 | 19 |
| CP-ASP03E-1/G | D03 Aluminum Parallel Flow Cover Plate w/Gauge Ports | 86 | 23 |
| CP-ASP03E-1/Z | D03 Aluminum Parallel Flow Cover Plate | 86 | 23 |
| CP-ASP05E-1/G | D05 Aluminum Parallel Flow Cover Plate w/Gauge Ports | 88 | 23 |
| CP-ASP05E-1/Z | D05 Aluminum Parallel Flow Cover Plate | 88 | 23 |
| CP-ASP08E-1/G | D08 Aluminum Parallel Flow Cover Plate w/Gauge Ports | 90 | 23 |
| CP-ASP08E-1/Z | D08 Aluminum Parallel Flow Cover Plate | 90 | 23 |
| CP-ASS03E-1/Z | D03 Aluminum Series Flow Cover Plate | 87 | 23 |
| CP-ASS05E-1/Z | D05 Aluminum Series Flow Cover Plate | 89 | 23 |
| CP-ASS08E-1/Z | D08 Aluminum Series Flow Cover Plate | 91 | 23 |
| CP-SSP03E-1/G | D03 Steel Parallel Flow Cover Plate w/Gauge Ports | 86 | 23 |
| CP-SSP03E-1/Z | D03 Steel Parallel Flow Cover Plate | 86 | 23 |
| CP-SSP05E-1/G | D05 Steel Parallel Flow Cover Plate w/Gauge Ports | 88 | 23 |
| CP-SSP05E-1/Z | D05 Steel Parallel Flow Cover Plate | 88 | 23 |
| CP-SSP08E-1/G | D08 Steel Parallel Flow Cover Plate w/Gauge Ports | 90 | 23 |
| CP-SSP08E-1/Z | D08 Steel Parallel Flow Cover Plate | 90 | 23 |
| CP-SSS03E-1/Z | D03 Steel Series Flow Cover Plate | 87 | 23 |
| CP-SSS05E-1/Z | D05 Steel Series Flow Cover Plate | 89 | 23 |
| CP-SSS08E-1/Z | D08 Steel Series Flow Cover Plate | 91 | 23 |
| CSFE-003-069 | Spin-On Filter Cellulose Media Element, 3 Micron, 1 1/2-16 UN Mounting Thread, 6.9" Length | 159 | 40 |
| CSFE-003-109 | Spin-On Filter Cellulose Media Element, 3 Micron, 1 1/2-16 UN Mounting Thread, 10.9" Length | 159 | 40 |
| CSFE-003-109/WA | Spin-On Filter Cellulose Media Element, 3 Micron, 1 1/2-16 UN Mounting Thread, 10.9" Length, Water Absorbing | 159 | 40 |
| CSFE-010-069 | Spin-On Filter Cellulose Media Element, 10 Micron, 1 1/2-16 UN Mounting Thread, 6.9" Length | 159 | 40 |
| CSFE-010-109 | Spin-On Filter Cellulose Media Element, 10 Micron, 1 1/2-16 UN Mounting Thread, 10.9" Length | 159 | 40 |
| CSFE-010-109/WA | Spin-On Filter Cellulose Media Element, 10 Micron, 1 1/2-16 UN Mounting Thread, 10.9" Length, Water Absorbing | 159 | 40 |
| CSFE-025-069 | Spin-On Filter Cellulose Media Element, 25 Micron, 1 1/2-16 UN Mounting Thread, 6.9" Length | 159 | 40 |
| CSFE-025-109 | Spin-On Filter Cellulose Media Element, 25 Micron, 1 1/2-16 UN Mounting Thread, 10.9" Length | 159 | 40 |
| CSFE-141-069 | Spin-On Filter Cellulose Media Element, 141 Micron, 1 1/2-16 UN Mounting Thread, 6.9" Length | 159 | 40 |
| CSFE-141-109 | Spin-On Filter Cellulose Media Element, 141 Micron, 1 1/2-16 UN Mounting Thread, 10.9" Length | 159 | 40 |
| CTTE-ASR-003-092-BD | Tank Top Filter Cellulose Media Element for AI S/R Line Series, 3 Micron, 9.19" Length, Bi-Directional Flow | 164 | 42 |
| CTTE-ASR-003-092-OI/WA | Tank Top Filter Cellulose Media Element for AI S/R Line Series, 3 Micron, 9.19" Length, Water Absorbing, O/I Flow | 164 | 42 |
| CTTE-ASR-010-092-BD | Tank Top Filter Cellulose Media Element for AI S/R Line Series, 10 Micron, 9.19" Length, Bi-Directional Flow | 164 | 42 |
| CTTE-ASR-010-182-BD | Tank Top Filter Cellulose Media Element for AI S/R Line Series, 10 Micron, 18.19" Length, Bi-Directional Flow | 164 | 42 |
| CTTE-ASR-025-092-BD | Tank Top Filter Cellulose Media Element for AI S/R Line Series, 25 Micron, 9.19" Length, Bi-Directional Flow | 164 | 42 |
| CTTE-ASR-025-182-BD | Tank Top Filter Cellulose Media Element for AI S/R Line Series, 25 Micron, 18.19" Length, Bi-Directional Flow | 164 | 42 |
| CTTE-ASR-100-092-IO | Tank Top Filter Cellulose Media Element for AI S/R Line Series, 100 Micron, 9.19" Length, I/O Flow | 164 | 42 |
| CTTE-ASR-100-092-IO/M | Tank Top Filter Cellulose Media Element for AI S/R Line Series, 100 Micron, 9.19" Length, I/O Flow, Magnetic | 164 | 42 |
| CTTE-ASR-100-092-OI | Tank Top Filter Cellulose Media Element for AI S/R Line Series, 100 Micron, 9.19" Length, O/I Flow | 164 | 42 |
| CTTE-ASR-100-092-OI/M | Tank Top Filter Cellulose Media Element for AI S/R Line Series, 100 Micron, 9.19" Length, O/I Flow, Magnetic | 164 | 42 |



What is it, Where is it Index

| Part Number | Description | Catalog Page | Price Page |
|------------------------|---|--------------|------------|
| CTTE-ASR-100-182-OI | Tank Top Filter Cellulose Media Element for AI S/R Line Series, 100 Micron, 18.19" Length, O/I Flow | 164 | 42 |
| CTTE-ITB-03N | Tank Top Filter Cellulose Media Element for Integral Breather Series, 3 Micron | 161 | 41 |
| CTTE-ITB-10N | Tank Top Filter Cellulose Media Element for Integral Breather Series, 10 Micron | 161 | 41 |
| CTTE-ITB-25N | Tank Top Filter Cellulose Media Element for Integral Breather Series, 25 Micron | 161 | 41 |
| CTTE-SSR-003-092-BD | Tank Top Filter Cellulose Media Element for Stl S/R Line Series, 3 Micron, 9.19" Length, Bi-Directional Flow | 165 | 42 |
| CTTE-SSR-010-092-BD | Tank Top Filter Cellulose Media Element for Stl S/R Line Series, 10 Micron, 9.19" Length, Bi-Directional Flow | 165 | 42 |
| CTTE-SSR-010-092-IO/WA | Tank Top Filter Cellulose Media Element for Stl S/R Line Series, 10 Micron, 9.19" Length, Water Absorbing, I/O Flow | 165 | 42 |
| CTTE-SSR-010-182-BD | Tank Top Filter Cellulose Media Element for Stl S/R Line Series, 10 Micron, 18.19" Length, Bi-Directional Flow | 165 | 42 |
| CTTE-SSR-025-092-BD | Tank Top Filter Cellulose Media Element for Stl S/R Line Series, 25 Micron, 9.19" Length, Bi-Directional Flow | 165 | 42 |
| CTTE-SSR-025-182-BD | Tank Top Filter Cellulose Media Element for Stl S/R Line Series, 25 Micron, 18.19" Length, Bi-Directional Flow | 165 | 42 |
| CTTE-SSR-100-092-IO | Tank Top Filter Cellulose Media Element for Stl S/R Line Series, 100 Micron, 9.19" Length, I/O Flow | 165 | 42 |
| CTTE-SSR-100-092-IO/M | Tank Top Filter Cellulose Media Element for Stl S/R Line Series, 100 Micron, 9.19" Length, I/O Flow, Magnetic | 165 | 42 |
| CTTE-SSR-100-092-OI | Tank Top Filter Cellulose Media Element for Stl S/R Line Series, 100 Micron, 9.19" Length, O/I Flow | 165 | 42 |
| CTTE-SSR-100-092-OI/M | Tank Top Filter Cellulose Media Element for Stl S/R Line Series, 100 Micron, 9.19" Length, O/I Flow, Magnetic | 165 | 42 |
| E575xx100M | 5.75" Pilot Engine Mount to Metric 100mm Pump | 30 | 7 |
| E575xx2A | 5.75" Pilot Engine Mount to SAE A Pump | 30 | 7 |
| E575xx2AA | 5.75" Pilot Engine Mount to SAE 2AA Pump | 30 | 7 |
| E575xx2B | 5.75" Pilot Engine Mount to SAE B Pump | 30 | 7 |
| E575xx4F | 5.75" Pilot Engine Mount to USA4F17 Pump | 30 | 7 |
| E575xx80M | 5.75" Pilot Engine Mount to Metric 80mm Pump | 30 | 7 |
| E575xx80MS | 5.75" Pilot Engine Mount to Metric 80mm Special Pump | 30 | 7 |
| E644xx100M | 6.44" Pilot Engine Mount to Metric 100mm Pump | 31 | 7 |
| E644xx125M | 6.44" Pilot Engine Mount to Metric 125mm Pump | 31 | 7 |
| E644xx2A | 6.44" Pilot Engine Mount to SAE A Pump | 31 | 7 |
| E644xx2AA | 6.44" Pilot Engine Mount to SAE 2AA Pump | 31 | 7 |
| E644xx2B | 6.44" Pilot Engine Mount to SAE B Pump | 31 | 7 |
| E644xx2C | 6.44" Pilot Engine Mount to SAE C Pump | 31 | 7 |
| E644xx4F | 6.44" Pilot Engine Mount to USA4F17 Pump | 31 | 7 |
| E644xx63M | 6.44" Pilot Engine Mount to Metric 63mm Pump | 31 | 7 |
| E644xx63MS | 6.44" Pilot Engine Mount to Metric 63mm Special Pump | 31 | 7 |
| E644xx80M | 6.44" Pilot Engine Mount to Metric 80mm Pump | 31 | 7 |
| E644xx80MS | 6.44" Pilot Engine Mount to Metric 80mm Special Pump | 31 | 7 |
| E700xx100M | 7.00" Pilot Engine Mount to Metric 100mm Pump | 31 | 7 |
| E700xx125M | 7.00" Pilot Engine Mount to Metric 125mm Pump | 31 | 7 |
| E700xx2A | 7.00" Pilot Engine Mount to SAE A Pump | 31 | 7 |
| E700xx2AA | 7.00" Pilot Engine Mount to SAE 2AA Pump | 31 | 7 |
| E700xx2B | 7.00" Pilot Engine Mount to SAE B Pump | 32 | 7 |
| E700xx2C | 7.00" Pilot Engine Mount to SAE C Pump | 32 | 7 |
| E700xx4F | 7.00" Pilot Engine Mount to USA4F17 Pump | 32 | 7 |
| E700xx63M | 7.00" Pilot Engine Mount to Metric 63mm Pump | 32 | 7 |
| E700xx63MS | 7.00" Pilot Engine Mount to Metric 63mm Special Pump | 32 | 7 |
| E700xx80M | 7.00" Pilot Engine Mount to Metric 80mm Pump | 32 | 7 |
| E700xx80MS | 7.00" Pilot Engine Mount to Metric 80mm Special Pump | 32 | 7 |
| E787xx100M | 7.87" Pilot Engine Mount to Metric 100mm Pump | 32 | 7 |
| E787xx125M | 7.87" Pilot Engine Mount to Metric 125mm Pump | 32 | 7 |
| E787xx2A | 7.87" Pilot Engine Mount to SAE A Pump | 32 | 7 |
| E787xx2B | 7.87" Pilot Engine Mount to SAE B Pump | 32 | 7 |
| E787xx2C | 7.87" Pilot Engine Mount to SAE C Pump | 32 | 7 |
| E787xx63M | 7.87" Pilot Engine Mount to Metric 63mm Pump | 32 | 7 |
| E787xx63MS | 7.87" Pilot Engine Mount to Metric 63mm Special Pump | 32 | 7 |
| E787xx80M | 7.87" Pilot Engine Mount to Metric 80mm Pump | 32 | 7 |
| E787xx80MS | 7.87" Pilot Engine Mount to Metric 80mm Special Pump | 32 | 7 |
| FB-A008P | Filler Breather Assembly, A Cap, 1/2" Mounting Flange, P Screen | 140 | 36 |
| FB-A008W | Filler Breather Assembly, A Cap, 1/2" Mounting Flange, W Screen | 140 | 36 |
| FB-C-A | Filler Breather Cap, A Cap | 139 | 36 |
| FB-C-D | Filler Breather Cap, D Cap | 139 | 36 |
| FB-C-H | Filler Breather Cap, H Cap | 139 | 36 |
| FB-C-K | Filler Breather Cap, K Cap | 139 | 36 |
| FB-C-x-Dxx | Filler Breather Cap w/Dipstick | 139 | 36 |
| FB-C-MB-P004 | Filler Breather Cap, Mini Cap, 1/4 NPT | 139 | 36 |
| FB-C-MB-P006 | Filler Breather Cap, Mini Cap, 3/8 NPT | 139 | 36 |
| FB-C-MB-P008 | Filler Breather Cap, Mini Cap, 1/2 NPT | 139 | 36 |

What is it, Where is it Index



| Part Number | Description | Catalog Page | Price Page |
|---------------------|--|--------------|------------|
| FB-C-MB-P012 | Filler Breather Cap, Mini Cap, 3/4 NPT | 139 | 36 |
| FB-F-008 | Filler Breather Mounting Flange x 1/2" | 139 | 36 |
| FB-F-108 | Filler Breather Mounting Flange x 1 1/2" | 139 | 36 |
| FB-F-600 | Filler Breather Mounting Flange x 6" | 139 | 36 |
| FB-K008W | Filler Breather Assembly, K Cap, 1/2" Mounting Flange, W Screen | 140 | 36 |
| FB-O-L | Filler Breather Cap Lock Kit | 140 | 36 |
| FB-O-PL | Filler Breather Pad Lock for Cap Lock Kit (not included with FB-O-L) | 140 | 36 |
| FB-O-SM | Filler Breather Side Mounting Kit | 140 | 36 |
| FBS-10012-012P | NPT Style Filler Breather Spin-On Adapter, 1-12 UN x 3/4 NPT | 138 | 36 |
| FBS-10012-B | Bayonet Style Filler Breather Spin-On Adapter, 1-12 UN | 138 | 36 |
| FBS-10216-012P | NPT Style Filler Breather Spin-On Adapter, 1 1/8-16 UN x 3/4 NPT | 138 | 36 |
| FBS-10216-B | Bayonet Style Filler Breather Spin-On Adapter, 1 1/8-16 UN | 138 | 36 |
| FBS-10816-104P | NPT Style Filler Breather Spin-On Adapter, 1 1/2-16 UN x 1 1/4 NPT | 138 | 36 |
| FBS-10816-B | Bayonet Style Filler Breather Spin-On Adapter, 1 1/2-16 UN | 138 | 36 |
| FBS-10816-F | Flange Style Filler Breather Spin-On Adapter, 1 1/2-16 UN | 138 | 36 |
| FBS-10816-FG | Flange Style Filler Breather Spin-On Adapter, 1 1/2-16 UN with Gauge Port | 138 | 36 |
| FB-S-C16 | Filler Breather Screen, C Screen, 16 Mesh, Stainless Steel x 3" | 139 | 36 |
| FB-S-N | Filler Breather Screen, N Screen, 200 Mesh, Brass x 6" | 139 | 36 |
| FB-S-P | Filler Breather Screen, P Screen, 30 Mesh, Nylon x 4" | 139 | 36 |
| FB-S-R | Filler Breather Screen, R Screen, 30 Mesh, Brass x 4" | 139 | 36 |
| FB-S-V | Filler Breather Screen, V Screen, 30 Mesh, Brass x 9 1/4" | 139 | 36 |
| FB-S-W | Filler Breather Screen, W Screen, 30 Mesh, Stainless Steel x 3 1/4" | 139 | 36 |
| FB-S-X | Filler Breather Screen, X Screen, 30 Mesh, Stainless Steel x 6 1/4" | 139 | 36 |
| FB-S-Y | Filler Breather Screen, Y Screen, 30 Mesh, Stainless Steel x 8 1/4" | 139 | 36 |
| FB-S-Z | Filler Breather Screen, Z Screen, 30 Mesh, Stainless Steel x 10 1/4" | 139 | 36 |
| FK-A03 | D03 Manifold Flange Mounting Kit | 195 | 11 |
| FK-A05 | D05 Manifold Flange Mounting Kit | 195 | 15 |
| FK-A08 | D08 Manifold Flange Mounting Kit | 195 | 18 |
| GI-01-NPT | Gauge Isolator, Single Station, 1/4" NPT Port | 168 | 43 |
| GI-01-SAE | Gauge Isolator, Single Station, #4 SAE Port | 168 | 43 |
| GI-06-SAE | Gauge Isolator, Six Station, #4 SAE Port | 168 | 43 |
| HA-0002P/01P-xx-1/2 | Header Manifold, 0 Degree Aluminum, 1/8 NPT End Ports x 1/16 NPT Side Ports | 107 | 26 |
| HA-0002P/02P-xx-1/2 | Header Manifold, 0 Degree Aluminum, 1/8 NPT End Ports x 1/8 NPT Side Ports | 107 | |
| HA-0004P/02P-xx-1/2 | Header Manifold, 0 Degree Aluminum, 1/4 NPT End Ports x 1/8 NPT Side Ports | 107 | 26 |
| HA-0004x/04x-xx-1/2 | Header Manifold, 0 Degree Aluminum, Size 4 End Ports x Size 4 Side Ports | 108 | |
| HA-0006x/02P-xx-1/2 | Header Manifold, 0 Degree Aluminum, Size 6 End Ports x 1/8 NPT Side Ports | 107 | |
| HA-0006x/04x-xx-1/2 | Header Manifold, 0 Degree Aluminum, Size 6 End Ports x Size 4 Side Ports | 108 | 26 |
| HA-0006x/06x-xx-1/2 | Header Manifold, 0 Degree Aluminum, Size 6 End Ports x Size 6 Side Ports | 109 | |
| HA-0008x/04x-xx-1/2 | Header Manifold, 0 Degree Aluminum, Size 8 End Ports x Size 4 Side Ports | 108 | |
| HA-0008x/06x-xx-1/2 | Header Manifold, 0 Degree Aluminum, Size 8 End Ports x Size 6 Side Ports | 109 | 26 |
| HA-0008x/08x-xx-1/2 | Header Manifold, 0 Degree Aluminum, Size 8 End Ports x Size 8 Side Ports | 110 | |
| HA-0012x/06x-xx-1/2 | Header Manifold, 0 Degree Aluminum, Size 12 End Ports x Size 6 Side Ports | 109 | |
| HA-0012x/08x-xx-1/2 | Header Manifold, 0 Degree Aluminum, Size 12 End Ports x Size 8 Side Ports | 110 | 26 |
| HA-0012x/12x-xx-1/2 | Header Manifold, 0 Degree Aluminum, Size 12 End Ports x Size 12 Side Ports | 110 | |
| HA-0016x/08x-xx-1/2 | Header Manifold, 0 Degree Aluminum, Size 16 End Ports x Size 8 Side Ports | 110 | |
| HA-0016x/12x-xx-1/2 | Header Manifold, 0 Degree Aluminum, Size 16 End Ports x Size 12 Side Ports | 110 | 26 |
| HA-0016x/16x-xx-1/2 | Header Manifold, 0 Degree Aluminum, Size 16 End Ports x Size 16 Side Ports | 111 | |
| HA-0020x/12x-xx-1/2 | Header Manifold, 0 Degree Aluminum, Size 20 End Ports x Size 12 Side Ports | 110 | |
| HA-0020x/16x-xx-1/2 | Header Manifold, 0 Degree Aluminum, Size 20 End Ports x Size 16 Side Ports | 111 | 26 |
| HA-0020x/20x-xx-1/2 | Header Manifold, 0 Degree Aluminum, Size 20 End Ports x Size 20 Side Ports | 111 | |
| HA-0024x/16x-xx-1/2 | Header Manifold, 0 Degree Aluminum, Size 24 End Ports x Size 16 Side Ports | 111 | |
| HA-0024x/20x-xx-1/2 | Header Manifold, 0 Degree Aluminum, Size 24 End Ports x Size 20 Side Ports | 111 | 26 |
| HA-0024x/24x-xx-1/2 | Header Manifold, 0 Degree Aluminum, Size 24 End Ports x Size 24 Side Ports | 111 | |
| HA-0032x/24x-xx-1/2 | Header Manifold, 0 Degree Aluminum, Size 32 End Ports x Size 24 Side Ports | 111 | 26 |
| HA-0902P/01P-xx-1/2 | Header Manifold, 90 Degree Aluminum, 1/8 NPT End Ports x 1/16 NPT Side Ports | 107 | |
| HA-0902P/02P-xx-1/2 | Header Manifold, 90 Degree Aluminum, 1/8 NPT End Ports x 1/8 NPT Side Ports | 107 | |
| HA-0904P/02P-xx-1/2 | Header Manifold, 90 Degree Aluminum, 1/4 NPT End Ports x 1/8 NPT Side Ports | 107 | |
| HA-0904x/04x-xx-1/2 | Header Manifold, 90 Degree Aluminum, Size 4 End Ports x Size 4 Side Ports | 108 | |
| HA-0906x/02P-xx-1/2 | Header Manifold, 90 Degree Aluminum, Size 6 End Ports x 1/8 NPT Side Ports | 107 | |
| HA-0906x/04x-xx-1/2 | Header Manifold, 90 Degree Aluminum, Size 6 End Ports x Size 4 Side Ports | 108 | 27 |
| HA-0906x/06x-xx-1/2 | Header Manifold, 90 Degree Aluminum, Size 6 End Ports x Size 6 Side Ports | 109 | |
| HA-0908x/04x-xx-1/2 | Header Manifold, 90 Degree Aluminum, Size 8 End Ports x Size 4 Side Ports | 108 | |



What is it, Where is it Index

| Part Number | Description | Catalog Page | Price Page |
|---------------------|---|--------------|------------|
| HA-0908x/06x-xx-1/Z | Header Manifold, 90 Degree Aluminum, Size 8 End Ports x Size 6 Side Ports | 109 | 27 |
| HA-0908x/08x-xx-1/Z | Header Manifold, 90 Degree Aluminum, Size 8 End Ports x Size 8 Side Ports | 110 | |
| HA-0912x/06x-xx-1/Z | Header Manifold, 90 Degree Aluminum, Size 12 End Ports x Size 6 Side Ports | 109 | |
| HA-0912x/08x-xx-1/Z | Header Manifold, 90 Degree Aluminum, Size 12 End Ports x Size 8 Side Ports | 110 | 27 |
| HA-0912x/12x-xx-1/Z | Header Manifold, 90 Degree Aluminum, Size 12 End Ports x Size 12 Side Ports | 110 | |
| HA-0916x/08x-xx-1/Z | Header Manifold, 90 Degree Aluminum, Size 16 End Ports x Size 8 Side Ports | 110 | |
| HA-0916x/12x-xx-1/Z | Header Manifold, 90 Degree Aluminum, Size 16 End Ports x Size 12 Side Ports | 110 | 27 |
| HA-0916x/16x-xx-1/Z | Header Manifold, 90 Degree Aluminum, Size 16 End Ports x Size 16 Side Ports | 111 | |
| HA-0920x/12x-xx-1/Z | Header Manifold, 90 Degree Aluminum, Size 20 End Ports x Size 12 Side Ports | 110 | |
| HA-0920x/16x-xx-1/Z | Header Manifold, 90 Degree Aluminum, Size 20 End Ports x Size 16 Side Ports | 111 | 27 |
| HA-0920x/20x-xx-1/Z | Header Manifold, 90 Degree Aluminum, Size 20 End Ports x Size 20 Side Ports | 111 | |
| HA-0924x/16x-xx-1/Z | Header Manifold, 90 Degree Aluminum, Size 24 End Ports x Size 16 Side Ports | 111 | |
| HA-0924x/20x-xx-1/Z | Header Manifold, 90 Degree Aluminum, Size 24 End Ports x Size 20 Side Ports | 111 | 27 |
| HA-0924x/24x-xx-1/Z | Header Manifold, 90 Degree Aluminum, Size 24 End Ports x Size 24 Side Ports | 111 | |
| HA-0932x/24x-xx-1/Z | Header Manifold, 90 Degree Aluminum, Size 32 End Ports x Size 24 Side Ports | 111 | 27 |
| HA-1802P/01P-xx-1/Z | Header Manifold, 180 Degree Aluminum, 1/8 NPT End Ports x 1/16 NPT Side Ports | 107 | |
| HA-1802P/02P-xx-1/Z | Header Manifold, 180 Degree Aluminum, 1/8 NPT End Ports x 1/8 NPT Side Ports | 107 | |
| HA-1804P/02P-xx-1/Z | Header Manifold, 180 Degree Aluminum, 1/4 NPT End Ports x 1/8 NPT Side Ports | 107 | |
| HA-1804x/04x-xx-1/Z | Header Manifold, 180 Degree Aluminum, Size 4 End Ports x Size 4 Side Ports | 108 | |
| HA-1806x/02P-xx-1/Z | Header Manifold, 180 Degree Aluminum, Size 6 End Ports x 1/8 NPT Side Ports | 107 | |
| HA-1806x/04x-xx-1/Z | Header Manifold, 180 Degree Aluminum, Size 6 End Ports x Size 4 Side Ports | 108 | 28 |
| HA-1806x/06x-xx-1/Z | Header Manifold, 180 Degree Aluminum, Size 6 End Ports x Size 6 Side Ports | 109 | |
| HA-1808x/04x-xx-1/Z | Header Manifold, 180 Degree Aluminum, Size 8 End Ports x Size 4 Side Ports | 108 | |
| HA-1808x/06x-xx-1/Z | Header Manifold, 180 Degree Aluminum, Size 8 End Ports x Size 6 Side Ports | 109 | 28 |
| HA-1808x/08x-xx-1/Z | Header Manifold, 180 Degree Aluminum, Size 8 End Ports x Size 8 Side Ports | 110 | |
| HA-1812x/06x-xx-1/Z | Header Manifold, 180 Degree Aluminum, Size 12 End Ports x Size 6 Side Ports | 109 | |
| HA-1812x/08x-xx-1/Z | Header Manifold, 180 Degree Aluminum, Size 12 End Ports x Size 8 Side Ports | 110 | 28 |
| HA-1812x/12x-xx-1/Z | Header Manifold, 180 Degree Aluminum, Size 12 End Ports x Size 12 Side Ports | 110 | |
| HA-1816x/08x-xx-1/Z | Header Manifold, 180 Degree Aluminum, Size 16 End Ports x Size 8 Side Ports | 110 | |
| HA-1816x/12x-xx-1/Z | Header Manifold, 180 Degree Aluminum, Size 16 End Ports x Size 12 Side Ports | 110 | 28 |
| HA-1816x/16x-xx-1/Z | Header Manifold, 180 Degree Aluminum, Size 16 End Ports x Size 16 Side Ports | 111 | |
| HA-1820x/12x-xx-1/Z | Header Manifold, 180 Degree Aluminum, Size 20 End Ports x Size 12 Side Ports | 110 | |
| HA-1820x/16x-xx-1/Z | Header Manifold, 180 Degree Aluminum, Size 20 End Ports x Size 16 Side Ports | 111 | 28 |
| HA-1820x/20x-xx-1/Z | Header Manifold, 180 Degree Aluminum, Size 20 End Ports x Size 20 Side Ports | 111 | |
| HA-1824x/16x-xx-1/Z | Header Manifold, 180 Degree Aluminum, Size 24 End Ports x Size 16 Side Ports | 111 | |
| HA-1824x/20x-xx-1/Z | Header Manifold, 180 Degree Aluminum, Size 24 End Ports x Size 20 Side Ports | 111 | 28 |
| HA-1824x/24x-xx-1/Z | Header Manifold, 180 Degree Aluminum, Size 24 End Ports x Size 24 Side Ports | 111 | |
| HA-1832x/24x-xx-1/Z | Header Manifold, 180 Degree Aluminum, Size 32 End Ports x Size 24 Side Ports | 111 | 28 |
| HS-0002P/01P-xx-1/Z | Header Manifold, 0 Degree Steel, 1/8 NPT End Ports x 1/16 NPT Side Ports | 107 | 26 |
| HS-0002P/02P-xx-1/Z | Header Manifold, 0 Degree Steel, 1/8 NPT End Ports x 1/8 NPT Side Ports | 107 | |
| HS-0004P/02P-xx-1/Z | Header Manifold, 0 Degree Steel, 1/4 NPT End Ports x 1/8 NPT Side Ports | 107 | 26 |
| HS-0004x/04x-xx-1/Z | Header Manifold, 0 Degree Steel, Size 4 End Ports x Size 4 Side Ports | 108 | |
| HS-0006x/02P-xx-1/Z | Header Manifold, 0 Degree Steel, Size 6 End Ports x 1/8 NPT Side Ports | 107 | |
| HS-0006x/04x-xx-1/Z | Header Manifold, 0 Degree Steel, Size 6 End Ports x Size 4 Side Ports | 108 | 26 |
| HS-0006x/06x-xx-1/Z | Header Manifold, 0 Degree Steel, Size 6 End Ports x Size 6 Side Ports | 109 | |
| HS-0008x/04x-xx-1/Z | Header Manifold, 0 Degree Steel, Size 8 End Ports x Size 4 Side Ports | 108 | |
| HS-0008x/06x-xx-1/Z | Header Manifold, 0 Degree Steel, Size 8 End Ports x Size 6 Side Ports | 109 | 26 |
| HS-0008x/08x-xx-1/Z | Header Manifold, 0 Degree Steel, Size 8 End Ports x Size 8 Side Ports | 110 | |
| HS-0012x/06x-xx-1/Z | Header Manifold, 0 Degree Steel, Size 12 End Ports x Size 6 Side Ports | 109 | |
| HS-0012x/08x-xx-1/Z | Header Manifold, 0 Degree Steel, Size 12 End Ports x Size 8 Side Ports | 110 | 26 |
| HS-0012x/12x-xx-1/Z | Header Manifold, 0 Degree Steel, Size 12 End Ports x Size 12 Side Ports | 110 | |
| HS-0016x/08x-xx-1/Z | Header Manifold, 0 Degree Steel, Size 16 End Ports x Size 8 Side Ports | 110 | |
| HS-0016x/12x-xx-1/Z | Header Manifold, 0 Degree Steel, Size 16 End Ports x Size 12 Side Ports | 110 | 26 |
| HS-0016x/16x-xx-1/Z | Header Manifold, 0 Degree Steel, Size 16 End Ports x Size 16 Side Ports | 111 | |
| HS-0020x/12x-xx-1/Z | Header Manifold, 0 Degree Steel, Size 20 End Ports x Size 12 Side Ports | 110 | |
| HS-0020x/16x-xx-1/Z | Header Manifold, 0 Degree Steel, Size 20 End Ports x Size 16 Side Ports | 111 | 26 |
| HS-0020x/20x-xx-1/Z | Header Manifold, 0 Degree Steel, Size 20 End Ports x Size 20 Side Ports | 111 | |
| HS-0024x/16x-xx-1/Z | Header Manifold, 0 Degree Steel, Size 24 End Ports x Size 16 Side Ports | 111 | |
| HS-0024x/20x-xx-1/Z | Header Manifold, 0 Degree Steel, Size 24 End Ports x Size 20 Side Ports | 111 | 26 |
| HS-0024x/24x-xx-1/Z | Header Manifold, 0 Degree Steel, Size 24 End Ports x Size 24 Side Ports | 111 | |
| HS-0032x/24x-xx-1/Z | Header Manifold, 0 Degree Steel, Size 32 End Ports x Size 24 Side Ports | 111 | 26 |
| HS-0902P/01P-xx-1/Z | Header Manifold, 90 Degree Steel, 1/8 NPT End Ports x 1/16 NPT Side Ports | 107 | |

What is it, Where is it Index



| Part Number | Description | Catalog Page | Price Page |
|---------------------|--|--------------|------------|
| HS-0902P/02P-xx-1/Z | Header Manifold, 90 Degree Steel, 1/8 NPT End Ports x 1/8 NPT Side Ports | 107 | |
| HS-0904P/02P-xx-1/Z | Header Manifold, 90 Degree Steel, 1/4 NPT End Ports x 1/8 NPT Side Ports | 107 | |
| HS-0904x/04x-xx-1/Z | Header Manifold, 90 Degree Steel, Size 4 End Ports x Size 4 Side Ports | 108 | |
| HS-0906x/02P-xx-1/Z | Header Manifold, 90 Degree Steel, Size 6 End Ports x 1/8 NPT Side Ports | 107 | |
| HS-0906x/04x-xx-1/Z | Header Manifold, 90 Degree Steel, Size 6 End Ports x Size 4 Side Ports | 108 | 27 |
| HS-0906x/06x-xx-1/Z | Header Manifold, 90 Degree Steel, Size 6 End Ports x Size 6 Side Ports | 109 | |
| HS-0908x/04x-xx-1/Z | Header Manifold, 90 Degree Steel, Size 8 End Ports x Size 4 Side Ports | 108 | |
| HS-0908x/06x-xx-1/Z | Header Manifold, 90 Degree Steel, Size 8 End Ports x Size 6 Side Ports | 109 | 27 |
| HS-0908x/08x-xx-1/Z | Header Manifold, 90 Degree Steel, Size 8 End Ports x Size 8 Side Ports | 110 | |
| HS-0912x/06x-xx-1/Z | Header Manifold, 90 Degree Steel, Size 12 End Ports x Size 6 Side Ports | 109 | |
| HS-0912x/08x-xx-1/Z | Header Manifold, 90 Degree Steel, Size 12 End Ports x Size 8 Side Ports | 110 | 27 |
| HS-0912x/12x-xx-1/Z | Header Manifold, 90 Degree Steel, Size 12 End Ports x Size 12 Side Ports | 110 | |
| HS-0916x/08x-xx-1/Z | Header Manifold, 90 Degree Steel, Size 16 End Ports x Size 8 Side Ports | 110 | |
| HS-0916x/12x-xx-1/Z | Header Manifold, 90 Degree Steel, Size 16 End Ports x Size 12 Side Ports | 110 | 27 |
| HS-0916x/16x-xx-1/Z | Header Manifold, 90 Degree Steel, Size 16 End Ports x Size 16 Side Ports | 111 | |
| HS-0920x/12x-xx-1/Z | Header Manifold, 90 Degree Steel, Size 20 End Ports x Size 12 Side Ports | 110 | |
| HS-0920x/16x-xx-1/Z | Header Manifold, 90 Degree Steel, Size 20 End Ports x Size 16 Side Ports | 111 | 27 |
| HS-0920x/20x-xx-1/Z | Header Manifold, 90 Degree Steel, Size 20 End Ports x Size 20 Side Ports | 111 | |
| HS-0924x/16x-xx-1/Z | Header Manifold, 90 Degree Steel, Size 24 End Ports x Size 16 Side Ports | 111 | |
| HS-0924x/20x-xx-1/Z | Header Manifold, 90 Degree Steel, Size 24 End Ports x Size 20 Side Ports | 111 | 27 |
| HS-0924x/24x-xx-1/Z | Header Manifold, 90 Degree Steel, Size 24 End Ports x Size 24 Side Ports | 111 | |
| HS-0932x/24x-xx-1/Z | Header Manifold, 90 Degree Steel, Size 32 End Ports x Size 24 Side Ports | 111 | 27 |
| HS-1802P/01P-xx-1/Z | Header Manifold, 180 Degree Steel, 1/8 NPT End Ports x 1/16 NPT Side Ports | 107 | |
| HS-1802P/02P-xx-1/Z | Header Manifold, 180 Degree Steel, 1/8 NPT End Ports x 1/8 NPT Side Ports | 107 | |
| HS-1804P/02P-xx-1/Z | Header Manifold, 180 Degree Steel, 1/4 NPT End Ports x 1/8 NPT Side Ports | 107 | |
| HS-1804x/04x-xx-1/Z | Header Manifold, 180 Degree Steel, Size 4 End Ports x Size 4 Side Ports | 108 | |
| HS-1806x/02P-xx-1/Z | Header Manifold, 180 Degree Steel, Size 6 End Ports x 1/8 NPT Side Ports | 107 | |
| HS-1806x/04x-xx-1/Z | Header Manifold, 180 Degree Steel, Size 6 End Ports x Size 4 Side Ports | 108 | 28 |
| HS-1806x/06x-xx-1/Z | Header Manifold, 180 Degree Steel, Size 6 End Ports x Size 6 Side Ports | 109 | |
| HS-1808x/04x-xx-1/Z | Header Manifold, 180 Degree Steel, Size 8 End Ports x Size 4 Side Ports | 108 | |
| HS-1808x/06x-xx-1/Z | Header Manifold, 180 Degree Steel, Size 8 End Ports x Size 6 Side Ports | 109 | 28 |
| HS-1808x/08x-xx-1/Z | Header Manifold, 180 Degree Steel, Size 8 End Ports x Size 8 Side Ports | 110 | |
| HS-1812x/06x-xx-1/Z | Header Manifold, 180 Degree Steel, Size 12 End Ports x Size 6 Side Ports | 109 | |
| HS-1812x/08x-xx-1/Z | Header Manifold, 180 Degree Steel, Size 12 End Ports x Size 8 Side Ports | 110 | 28 |
| HS-1812x/12x-xx-1/Z | Header Manifold, 180 Degree Steel, Size 12 End Ports x Size 12 Side Ports | 110 | |
| HS-1816x/08x-xx-1/Z | Header Manifold, 180 Degree Steel, Size 16 End Ports x Size 8 Side Ports | 110 | |
| HS-1816x/12x-xx-1/Z | Header Manifold, 180 Degree Steel, Size 16 End Ports x Size 12 Side Ports | 110 | 28 |
| HS-1816x/16x-xx-1/Z | Header Manifold, 180 Degree Steel, Size 16 End Ports x Size 16 Side Ports | 111 | |
| HS-1820x/12x-xx-1/Z | Header Manifold, 180 Degree Steel, Size 20 End Ports x Size 12 Side Ports | 110 | |
| HS-1820x/16x-xx-1/Z | Header Manifold, 180 Degree Steel, Size 20 End Ports x Size 16 Side Ports | 111 | 28 |
| HS-1820x/20x-xx-1/Z | Header Manifold, 180 Degree Steel, Size 20 End Ports x Size 20 Side Ports | 111 | |
| HS-1824x/16x-xx-1/Z | Header Manifold, 180 Degree Steel, Size 24 End Ports x Size 16 Side Ports | 111 | |
| HS-1824x/20x-xx-1/Z | Header Manifold, 180 Degree Steel, Size 24 End Ports x Size 20 Side Ports | 111 | 28 |
| HS-1824x/24x-xx-1/Z | Header Manifold, 180 Degree Steel, Size 24 End Ports x Size 24 Side Ports | 111 | |
| HS-1832x/24x-xx-1/Z | Header Manifold, 180 Degree Steel, Size 32 End Ports x Size 24 Side Ports | 111 | 28 |
| IC-A05P11 | D05 Aluminum IC Circuit Tank Line Feed Control Manifold- NPT | 73 | 20 |
| IC-A05P31 | D05 Aluminum IC Solenoid Activated Regeneration Module- NPT | 75 | 20 |
| IC-A05P41 | D05 Aluminum IC Circuit Feed Control Cylinder Port Meter Out Manifold- NPT | 74 | 20 |
| IC-A05P42 | D05 Aluminum IC Circuit Feed Control Cylinder Port Meter In Manifold- NPT | 74 | 20 |
| IC-A05S11 | D05 Aluminum IC Circuit Tank Line Feed Control Manifold- SAE | 73 | 20 |
| IC-A05S31 | D05 Aluminum IC Solenoid Activated Regeneration Module- SAE | 75 | 20 |
| IC-A05S41 | D05 Aluminum IC Circuit Feed Control Cylinder Port Meter Out Manifold- SAE | 74 | 20 |
| IC-A05S42 | D05 Aluminum IC Circuit Feed Control Cylinder Port Meter In Manifold- SAE | 74 | 20 |
| IC-A08P21 | D08 Aluminum IC Hi-Lo Pressure Operated Unloading Manifold- NPT | | 20 |
| IC-A08S21 | D08 Aluminum IC Hi-Lo Pressure Operated Unloading Manifold- SAE | | 20 |
| IC-S05P11 | D05 Steel IC Circuit Tank Line Feed Control Manifold-NPT | 73 | 20 |
| IC-S05P31 | D05 Steel IC Solenoid Activated Regeneration Module-NPT | 75 | 20 |
| IC-S05P41 | D05 Steel IC Circuit Feed Control Cylinder Port Meter Out Manifold-NPT | 74 | 20 |
| IC-S05P42 | D05 Steel IC Circuit Feed Control Cylinder Port Meter In Manifold-NPT | 74 | 20 |
| IC-S05S11 | D05 Steel IC Circuit Tank Line Feed Control Manifold-SAE | 73 | 20 |
| IC-S05S31 | D05 Steel IC Solenoid Activated Regeneration Module-SAE | 75 | 20 |
| IC-S05S41 | D05 Steel IC Circuit Feed Control Cylinder Port Meter Out Manifold-SAE | 74 | 20 |



What is it, Where is it Index

| Part Number | Description | Catalog Page | Price Page |
|---------------------|--|--------------|------------|
| IC-S05S42 | D05 Steel IC Circuit Feed Control Cylinder Port Meter In Manifold-SAE | 74 | 20 |
| IC-S08P21 | D08 Steel IC Hi-Lo Pressure Operated Unloading Manifold-NPT | | 20 |
| IC-S08S21 | D08 Steel IC Hi-Lo Pressure Operated Unloading Manifold-SAE | | 20 |
| IP-AP03-0 | Isolation Plug for D03 Aluminum Old Style Manifold P or T Ports | 196 | 24 |
| IP-AP03-1 | Isolation Plug for D03 Aluminum High Flow Manifold P or T Ports | 196 | 24 |
| IP-AP05-0 | Isolation Plug for D05 Aluminum Standard Flow Manifold P Port | 196 | 24 |
| IP-AP05-1 | Isolation Plug for D03 Aluminum Standard Flow Retro Design Manifold P Port | 196 | 24 |
| IP-AP08-0 | Isolation Plug for D05 Aluminum High Flow Manifold P Port | 196 | 24 |
| IP-AT05-0 | Isolation Plug for D05 Aluminum Standard Flow Manifold T Port | 196 | 24 |
| IP-AT05-1 | Isolation Plug for D05 Aluminum High Flow Manifold T Port | 196 | 24 |
| IP-AT08-0 | Isolation Plug for D08 Aluminum Standard Flow Manifold T Port | 196 | 24 |
| IP-SP03-0 | Isolation Plug for D03 Steel Old Style Manifold P or T Ports | 196 | 24 |
| IP-SP03-1 | Isolation Plug for D03 Steel High Flow Manifold P or T Ports | 196 | 24 |
| IP-SP05-0 | Isolation Plug for D03 Steel High Flow Retro Design Manifold P Port | 196 | 24 |
| IP-SP08-0 | Isolation Plug for D03 Steel High Flow Retro Design Manifold T Port | 196 | 24 |
| IP-SP08-1 | Isolation Plug for D03 Aluminum High Flow Retro Design Manifold T Port | 196 | 24 |
| IP-ST05-0 | Isolation Plug for D05 Steel Standard Flow Manifold T Port | 196 | 24 |
| IP-ST05-1 | Isolation Plug for D05 Steel High Flow Manifold T Port | 196 | 24 |
| IP-ST08-0 | Isolation Plug for D08 Aluminum High Flow Retro Design Manifold P Port | 196 | 24 |
| JA-09000/01P-xx-1/Z | Junction Manifold, 90 Degree Aluminum, 1/16 NPT Side Ports | 113 | |
| JA-09000/02P-xx-1/Z | Junction Manifold, 90 Degree Aluminum, 1/8 NPT Side Ports | 113 | |
| JA-09000/04x-xx-1/Z | Junction Manifold, 90 Degree Aluminum, Size 4 Side Ports | 113 | 29 |
| JA-09000/06x-xx-1/Z | Junction Manifold, 90 Degree Aluminum, Size 6 Side Ports | 114 | 29 |
| JA-09000/08x-xx-1/Z | Junction Manifold, 90 Degree Aluminum, Size 8 Side Ports | 114 | 29 |
| JA-09000/12x-xx-1/Z | Junction Manifold, 90 Degree Aluminum, Size 12 Side Ports | 114 | 29 |
| JA-09000/16x-xx-1/Z | Junction Manifold, 90 Degree Aluminum, Size 16 Side Ports | 114 | 29 |
| JA-09000/20x-xx-1/Z | Junction Manifold, 90 Degree Aluminum, Size 20 Side Ports | 114 | 29 |
| JA-09000/24x-xx-1/Z | Junction Manifold, 90 Degree Aluminum, Size 24 Side Ports | 114 | 29 |
| JA-18000/01P-xx-1/Z | Junction Manifold, 180 Degree Aluminum, 1/16 NPT Side Ports | 113 | |
| JA-18000/02P-xx-1/Z | Junction Manifold, 180 Degree Aluminum, 1/8 NPT Side Ports | 113 | |
| JA-18000/04x-xx-1/Z | Junction Manifold, 180 Degree Aluminum, Size 4 Side Ports | 113 | 30 |
| JA-18000/06x-xx-1/Z | Junction Manifold, 180 Degree Aluminum, Size 6 Side Ports | 114 | 30 |
| JA-18000/08x-xx-1/Z | Junction Manifold, 180 Degree Aluminum, Size 8 Side Ports | 114 | 30 |
| JA-18000/12x-xx-1/Z | Junction Manifold, 180 Degree Aluminum, Size 12 Side Ports | 114 | 30 |
| JA-18000/16x-xx-1/Z | Junction Manifold, 180 Degree Aluminum, Size 16 Side Ports | 114 | 30 |
| JA-18000/20x-xx-1/Z | Junction Manifold, 180 Degree Aluminum, Size 20 Side Ports | 114 | 30 |
| JA-18000/24x-xx-1/Z | Junction Manifold, 180 Degree Aluminum, Size 24 Side Ports | 114 | 30 |
| JA-27000/01P-xx-1/Z | Junction Manifold, 270 Degree Aluminum, 1/16 NPT Side Ports | 113 | |
| JA-27000/02P-xx-1/Z | Junction Manifold, 270 Degree Aluminum, 1/8 NPT Side Ports | 113 | |
| JA-27000/04x-xx-1/Z | Junction Manifold, 270 Degree Aluminum, Size 4 Side Ports | 113 | 31 |
| JA-27000/06x-xx-1/Z | Junction Manifold, 270 Degree Aluminum, Size 6 Side Ports | 114 | 31 |
| JA-27000/08x-xx-1/Z | Junction Manifold, 270 Degree Aluminum, Size 8 Side Ports | 114 | 31 |
| JA-27000/12x-xx-1/Z | Junction Manifold, 270 Degree Aluminum, Size 12 Side Ports | 114 | 31 |
| JA-27000/16x-xx-1/Z | Junction Manifold, 270 Degree Aluminum, Size 16 Side Ports | 114 | 31 |
| JA-27000/20x-xx-1/Z | Junction Manifold, 270 Degree Aluminum, Size 20 Side Ports | 114 | 31 |
| JA-27000/24x-xx-1/Z | Junction Manifold, 270 Degree Aluminum, Size 24 Side Ports | 114 | 31 |
| JS-09000/01P-xx-1/Z | Junction Manifold, 90 Degree Steel, 1/16 NPT Side Ports | 113 | |
| JS-09000/02P-xx-1/Z | Junction Manifold, 90 Degree Steel, 1/8 NPT Side Ports | 113 | |
| JS-09000/04x-xx-1/Z | Junction Manifold, 90 Degree Steel, Size 4 Side Ports | 113 | 29 |
| JS-09000/06x-xx-1/Z | Junction Manifold, 90 Degree Steel, Size 6 Side Ports | 114 | 29 |
| JS-09000/08x-xx-1/Z | Junction Manifold, 90 Degree Steel, Size 8 Side Ports | 114 | 29 |
| JS-09000/12x-xx-1/Z | Junction Manifold, 90 Degree Steel, Size 12 Side Ports | 114 | 29 |
| JS-09000/16x-xx-1/Z | Junction Manifold, 90 Degree Steel, Size 16 Side Ports | 114 | 29 |
| JS-09000/20x-xx-1/Z | Junction Manifold, 90 Degree Steel, Size 20 Side Ports | 114 | 29 |
| JS-09000/24x-xx-1/Z | Junction Manifold, 90 Degree Steel, Size 24 Side Ports | 114 | 29 |
| JS-18000/01P-xx-1/Z | Junction Manifold, 180 Degree Steel, 1/16 NPT Side Ports | 113 | |
| JS-18000/02P-xx-1/Z | Junction Manifold, 180 Degree Steel, 1/8 NPT Side Ports | 113 | |
| JS-18000/04x-xx-1/Z | Junction Manifold, 180 Degree Steel, Size 4 Side Ports | 113 | 30 |
| JS-18000/06x-xx-1/Z | Junction Manifold, 180 Degree Steel, Size 6 Side Ports | 114 | 30 |
| JS-18000/08x-xx-1/Z | Junction Manifold, 180 Degree Steel, Size 8 Side Ports | 114 | 30 |
| JS-18000/12x-xx-1/Z | Junction Manifold, 180 Degree Steel, Size 12 Side Ports | 114 | 30 |
| JS-18000/16x-xx-1/Z | Junction Manifold, 180 Degree Steel, Size 16 Side Ports | 114 | 30 |

What is it, Where is it Index



| Part Number | Description | Catalog Page | Price Page |
|---------------------|--|--------------|------------|
| JS-18000/20x-xx-1/Z | Junction Manifold, 180 Degree Steel, Size 20 Side Ports | 114 | 30 |
| JS-18000/24x-xx-1/Z | Junction Manifold, 180 Degree Steel, Size 24 Side Ports | 114 | 30 |
| JS-27000/01P-xx-1/Z | Junction Manifold, 270 Degree Steel, 1/16 NPT Side Ports | 113 | |
| JS-27000/02P-xx-1/Z | Junction Manifold, 270 Degree Steel, 1/8 NPT Side Ports | 113 | |
| JS-27000/04x-xx-1/Z | Junction Manifold, 270 Degree Steel, Size 4 Side Ports | 113 | 31 |
| JS-27000/06x-xx-1/Z | Junction Manifold, 270 Degree Steel, Size 6 Side Ports | 114 | 31 |
| JS-27000/08x-xx-1/Z | Junction Manifold, 270 Degree Steel, Size 8 Side Ports | 114 | 31 |
| JS-27000/12x-xx-1/Z | Junction Manifold, 270 Degree Steel, Size 12 Side Ports | 114 | 31 |
| JS-27000/16x-xx-1/Z | Junction Manifold, 270 Degree Steel, Size 16 Side Ports | 114 | 31 |
| JS-27000/20x-xx-1/Z | Junction Manifold, 270 Degree Steel, Size 20 Side Ports | 114 | 31 |
| JS-27000/24x-xx-1/Z | Junction Manifold, 270 Degree Steel, Size 24 Side Ports | 114 | 31 |
| LFPG-208-xxx-04N/BS | Liquid Filled Pressure Gauge, 2 1/2" Dial, 1/4" NPT Bottom Stem, with xxx Dial Range | 166 | 42 |
| LFPG-208-xxx-04N/RS | Liquid Filled Pressure Gauge, 2 1/2" Dial, 1/4" NPT Rear Stem, with xxx Dial Range | 167 | 42 |
| LFPG-400-xxx-04N/BS | Liquid Filled Pressure Gauge, 4" Dial, 1/4" NPT Bottom Stem, with xxx Dial Range | 166 | 42 |
| LFPG-400-xxx-04N/RS | Liquid Filled Pressure Gauge, 4" Dial, 1/4" NPT Rear Stem, with xxx Dial Range | 167 | 42 |
| LFPG-400-xxx-08N/BS | Liquid Filled Pressure Gauge, 4" Dial, 1/2" NPT Bottom Stem, with xxx Dial Range | 166 | 42 |
| M010-01024 | M Series, Size 10 Rod End Coupler, 5/16-24 Thread | 181 | 45 |
| M010-01224 | M Series, Size 10 Rod End Coupler, 3/8-24 Thread | 181 | 45 |
| M015-01420 | M Series, Size 15 Rod End Coupler, 7/16-20 Thread | 181 | 45 |
| M015-01620 | M Series, Size 15 Rod End Coupler, 1/2-20 Thread | 181 | 45 |
| M020-02018 | M Series, Size 20 Rod End Coupler, 5/8-18 Thread | 181 | 45 |
| M020-02416 | M Series, Size 20 Rod End Coupler, 3/4-16 Thread | 181 | 45 |
| M020-02814 | M Series, Size 20 Rod End Coupler, 7/8-14 Thread | 181 | 45 |
| M030-10014 | M Series, Size 30 Rod End Coupler, 1-14 Thread | 181 | 45 |
| M040-10812 | M Series, Size 40 Rod End Coupler, 1 1/2-12 Thread | 181 | 45 |
| M050-11612 | M Series, Size 50 Rod End Coupler, 1 1/2-12 Thread | 181 | 45 |
| M050-12412 | M Series, Size 50 Rod End Coupler, 1 3/4-12 Thread | 181 | 45 |
| M056VG | NEMA 056 Vertical Mount Gasket | 27 | 6 |
| M056xx100M | NEMA 056 Motor Mount to Metric 100mm Pump | 20 | 4 |
| M056xx100MV | NEMA 056 Vertical Motor Mount to Metric 100mm Pump | 28 | 6 |
| M056xx2A | NEMA 056 Motor Mount to SAE A Pump | 20 | 4 |
| M056xx2AA | NEMA 056 Motor Mount to SAE 2AA Pump | 20 | 4 |
| M056xx2AAV | NEMA 056 Vertical Motor Mount to SAE 2AA Pump | 28 | 6 |
| M056xx2AV | NEMA 056 Vertical Motor Mount to SAE A Pump | 28 | 6 |
| M056xx2B | NEMA 056 Motor Mount to SAE B Pump | 20 | 4 |
| M056xx2BV | NEMA 056 Vertical Motor Mount to SAE B Pump | 28 | 6 |
| M056xx4F | NEMA 056 Motor Mount to USA4F17 Pump | 20 | 4 |
| M056xx4FV | NEMA 056 Vertical Motor Mount to USA4F17 Pump | 28 | 6 |
| M056xx63M | NEMA 056 Motor Mount to Metric 63mm Pump | 20 | 4 |
| M056xx63MS | NEMA 056 Motor Mount to Metric 63mm Special Pump | 20 | 4 |
| M056xx63MSV | NEMA 056 Vertical Motor Mount to Metric 63mm Special Pump | 28 | 6 |
| M056xx63MV | NEMA 056 Vertical Motor Mount to Metric 63mm Pump | 28 | 6 |
| M056xx80M | NEMA 056 Motor Mount to Metric 80mm Pump | 20 | 4 |
| M056xx80MS | NEMA 056 Motor Mount to Metric 80mm Special Pump | 20 | 4 |
| M056xx80MSV | NEMA 056 Vertical Motor Mount to Metric 80mm Special Pump | 28 | 6 |
| M056xx80MV | NEMA 056 Vertical Motor Mount to Metric 80mm Pump | 28 | 6 |
| M056xxxx45 | NEMA 056 Motor Mount w/pump holes rotated 45 degrees | | 10 |
| M056xxxxM8 | NEMA 056 Motor Mount w/4 additional holes on motor end to allow rotating mount +/-45 degrees | | 10 |
| M060-12812 | M Series, Size 60 Rod End Coupler, 1 7/8-12 Thread | 181 | 45 |
| M060-20012 | M Series, Size 60 Rod End Coupler, 2-12 Thread | 181 | 45 |
| M070-20812 | M Series, Size 70 Rod End Coupler, 2 1/4-12 Thread | 181 | 45 |
| M080-21612 | M Series, Size 80 Rod End Coupler, 2 1/2-12 Thread | 181 | 45 |
| M080-22412 | M Series, Size 80 Rod End Coupler, 2 3/4-12 Thread | 181 | 45 |
| M080-30012 | M Series, Size 80 Rod End Coupler, 3-12 Thread | 181 | 45 |
| M100-30812 | M Series, Size 100 Rod End Coupler, 3 1/4-12 Thread | 181 | 45 |
| M100Axxxx | Model 100 Hub Spline Bore | 7 | 2 |
| M100AxxxxC | Model 100 Hub Spline Bore w/Clamp | 7 | 2 |
| M100Bxxxx | Model 100 Hub Steel Bushed Spline Bore | 7 | 2 |
| M100BxxxxC | Model 100 Hub Steel Bushed Spline Bore w/Clamp | 7 | 2 |
| M100Mxxxx | Model 100 Hub Metric Bore & Key | 5 | 2 |
| M100R | Model 100 Hub No Bore | 5 | 1 |
| M100xxxx | Model 100 Hub Bored & Keyed | 5 | 1 |



What is it, Where is it Index

| Part Number | Description | Catalog Page | Price Page |
|---------------|--|--------------|------------|
| M100xxxxDSSxx | Model 100 Hub Bored & Keyed w/Double Set Screws | 2 | 2 |
| M130MLxx100M | IEC Metric 130ML Motor Mount to Metric 100mm Pump | 23 | 5 |
| M130MLxx2A | IEC Metric 130ML Motor Mount to SAE A Pump | 23 | 5 |
| M130MLxx2AA | IEC Metric 130ML Motor Mount to SAE 2AA Pump | 23 | 5 |
| M130MLxx2B | IEC Metric 130ML Motor Mount to SAE B Pump | 23 | 5 |
| M130MLxx4F | IEC Metric 130ML Motor Mount to USA4F17 Pump | 23 | 5 |
| M130MLxx63M | IEC Metric 130ML Motor Mount to Metric 63mm Pump | 23 | 5 |
| M130MLxx63MS | IEC Metric 130ML Motor Mount to Metric 63mm SpecialPump | 23 | 5 |
| M130MLxx80M | IEC Metric 130ML Motor Mount to Metric 80mm Pump | 23 | 5 |
| M130MLxx80MS | IEC Metric 130ML Motor Mount to Metric 80mm Special Pump | 23 | 5 |
| M140-40812 | M Series, Size 140 Rod End Coupler, 4 1/4-12 Thread | 181 | 45 |
| M170xx | Model 100 Insert | 8 | 1 |
| M180MLxx100M | IEC Metric 180ML Motor Mount to Metric 100mm Pump | 24 | 5 |
| M180MLxx125M | IEC Metric 180ML Motor Mount to Metric 125mm Pump | 24 | 5 |
| M180MLxx2A | IEC Metric 180ML Motor Mount to SAE A Pump | 24 | 5 |
| M180MLxx2AA | IEC Metric 180ML Motor Mount to SAE 2AA Pump | 24 | 5 |
| M180MLxx2B | IEC Metric 180ML Motor Mount to SAE B Pump | 24 | 5 |
| M180MLxx2C | IEC Metric 180ML Motor Mount to SAE C Pump | 24 | 5 |
| M180MLxx4F | IEC Metric 180ML Motor Mount to USA4F17 Pump | 24 | 5 |
| M180MLxx63M | IEC Metric 180ML Motor Mount to Metric 63mm Pump | 24 | 5 |
| M180MLxx63MS | IEC Metric 180ML Motor Mount to Metric 63mm SpecialPump | 24 | 5 |
| M180MLxx80M | IEC Metric 180ML Motor Mount to Metric 80mm Pump | 24 | 5 |
| M180MLxx80MS | IEC Metric 180ML Motor Mount to Metric 80mm Special Pump | 24 | 5 |
| M182AVG | NEMA 182-A Vertical Mount Gasket | 28 | 6 |
| M182BVG | NEMA 182-B Vertical Mount Gasket | 28 | 6 |
| M182xx100M | NEMA 182 Motor Mount to Metric 100mm Pump | 21 | 4 |
| M182xx100MV | NEMA 182 Vertical Motor Mount to Metric 100mm Pump | 29 | 6 |
| M182xx125M | NEMA 182 Motor Mount to Metric 125mm Pump | 21 | 4 |
| M182xx125MV | NEMA 182 Vertical Motor Mount to Metric 125mm Pump | 29 | 6 |
| M182xx2A | NEMA 182 Motor Mount to SAE A Pump | 21 | 4 |
| M182xx2AA | NEMA 182 Motor Mount to SAE 2AA Pump | 21 | 4 |
| M182xx2AAV | NEMA 182 Vertical Motor Mount to SAE 2AA Pump | 29 | 6 |
| M182xx2AV | NEMA 182 Vertical Motor Mount to SAE A Pump | 29 | 6 |
| M182xx2B | NEMA 182 Motor Mount to SAE B Pump | 21 | 4 |
| M182xx2BV | NEMA 182 Vertical Motor Mount to SAE B Pump | 29 | 6 |
| M182xx2C | NEMA 182 Motor Mount to SAE C Pump | 21 | 4 |
| M182xx2CV | NEMA 182 Vertical Motor Mount to SAE C Pump | 29 | 6 |
| M182xx4F | NEMA 182 Motor Mount to USA4F17 Pump | 21 | 4 |
| M182xx4FV | NEMA 182 Vertical Motor Mount to USA4F17 Pump | 29 | 6 |
| M182xx63M | NEMA 182 Motor Mount to Metric 63mm Pump | 21 | 4 |
| M182xx63MS | NEMA 182 Motor Mount to Metric 63mm Special Pump | 21 | 4 |
| M182xx63MSV | NEMA 182 Vertical Motor Mount to Metric 63mm Pump | 29 | 6 |
| M182xx63MV | NEMA 182 Vertical Motor Mount to Metric 63mm Special Pump | 29 | 6 |
| M182xx80M | NEMA 182 Motor Mount to Metric 80mm Pump | 21 | 4 |
| M182xx80MS | NEMA 182 Motor Mount to Metric 80mm Special Pump | 21 | 4 |
| M182xx80MSV | NEMA 182 Vertical Motor Mount to Metric 80mm Special Pump | 29 | 6 |
| M182xx80MV | NEMA 182 Vertical Motor Mount to Metric 80mm Pump | 29 | 6 |
| M182xxxx45 | NEMA 182 Motor Mount w/pump holes rotated 45 degrees | | 10 |
| M182xxxxM8 | NEMA 182 Motor Mount w/4 additional holes on motor end to allow rotating mount +/-45 degrees | | 10 |
| M182xxxxVV | NEMA 182 Special Vertical Motor Mount for WorldWide Corp Motor | | 10 |
| M200Axxxx | Model 200 Hub Spline Bore | 7 | 2 |
| M200AxxxxC | Model 200 Hub Spline Bore w/Clamp | 7 | 2 |
| M200Bxxxx | Model 200 Hub Steel Bushed Spline Bore | 7 | 2 |
| M200BxxxxC | Model 200 Hub Steel Bushed Spline Bore w/Clamp | 7 | 2 |
| M200Mxxxx | Model 200 Hub Metric Bore & Key | 5 | 2 |
| M200R | Model 200 Hub No Bore | 5 | 1 |
| M200xxxx | Model 200 Hub Bored & Keyed | 5 | 1 |
| M200xxxxDSSxx | Model 200 Hub Bored & Keyed w/Double Set Screws | 2 | 2 |
| M230MLxx100M | IEC Metric 230ML Motor Mount to Metric 100mm Pump | 5 | |
| M230MLxx125M | IEC Metric 230ML Motor Mount to Metric 125mm Pump | 5 | |
| M230MLxx2A | IEC Metric 230ML Motor Mount to SAE A Pump | 5 | |
| M230MLxx2AA | IEC Metric 230ML Motor Mount to SAE 2AA Pump | 5 | |

What is it, Where is it Index



| Part Number | Description | Catalog Page | Price Page |
|----------------|--|--------------|------------|
| M230MLxx2B | IEC Metric 230ML Motor Mount to SAE B Pump | 5 | |
| M230MLxx2C | IEC Metric 230ML Motor Mount to SAE C Pump | 5 | |
| M230MLxx4F | IEC Metric 230ML Motor Mount to USA4F17 Pump | 5 | |
| M230MLxx63M | IEC Metric 230ML Motor Mount to Metric 63mm Pump | 5 | |
| M230MLxx63MS | IEC Metric 230ML Motor Mount to Metric 63mm SpecialPump | 5 | |
| M230MLxx80M | IEC Metric 230ML Motor Mount to Metric 80mm Pump | 5 | |
| M230MLxx80MS | IEC Metric 230ML Motor Mount to Metric 80mm Special Pump | 5 | |
| M250MLxx100M | IEC Metric 250ML Motor Mount to Metric 100mm Pump | 5 | |
| M250MLxx125M | IEC Metric 250ML Motor Mount to Metric 125mm Pump | 5 | |
| M250MLxx160M | IEC Metric 250ML Motor Mount to Metric 160mm Pump | 5 | |
| M250MLxx180M | IEC Metric 250ML Motor Mount to Metric 180mm Pump | 5 | |
| M250MLxx2B | IEC Metric 250ML Motor Mount to SAE B Pump | 5 | |
| M250MLxx2C | IEC Metric 250ML Motor Mount to SAE C Pump | 5 | |
| M250MLxx2D | IEC Metric 250ML Motor Mount to SAE D Pump | 5 | |
| M270xx | Model 200 Insert | 8 | 1 |
| M284xx100M | NEMA 284 Motor Mount to Metric 100mm Pump | 22 | 4 |
| M284xx125M | NEMA 284 Motor Mount to Metric 125mm Pump | 22 | 4 |
| M284xx2A | NEMA 284 Motor Mount to SAE A Pump | 22 | 4 |
| M284xx2B | NEMA 284 Motor Mount to SAE B Pump | 22 | 4 |
| M284xx2C | NEMA 284 Motor Mount to SAE C Pump | 22 | 4 |
| M284xx63M | NEMA 284 Motor Mount to Metric 63mm Pump | 22 | 4 |
| M284xx63MS | NEMA 284 Motor Mount to Metric 63mm Special Pump | 22 | 4 |
| M284xx80M | NEMA 284 Motor Mount to Metric 80mm Pump | 22 | 4 |
| M284xx80MS | NEMA 284 Motor Mount to Metric 80mm Special Pump | 22 | 4 |
| M284xxxx45 | Steel NEMA 284 Motor Mount w/pump holes rotated 45 degrees | | 10 |
| M284xxxxM8 | Steel NEMA 284 Motor Mount w/4 additional holes on motor end to allow rotating mount +/-45 degrees | | 10 |
| M300Axxxx | Model 300 Hub Spline Bore | 7 | 2 |
| M300AxxxxC | Model 300 Hub Spline Bore w/Clamp | 7 | 2 |
| M300Bxxxx | Model 300 Hub Steel Bushed Spline Bore | 7 | 2 |
| M300BxxxxC | Model 300 Hub Steel Bushed Spline Bore w/Clamp | 7 | 2 |
| M300Mxxxx | Model 300 Hub Metric Bore & Key | 5 | 2 |
| M300R | Model 300 Hub No Bore | 5 | 1 |
| M300xxxxx | Model 300 Hub Bored & Keyed | 5 | 1 |
| M300xxxxxDSSxx | Model 300 Hub Bored & Keyed w/Double Set Screws | 2 | 2 |
| M324xx100M | NEMA 324 Motor Mount to Metric 100mm Pump | 22 | 4 |
| M324xx125M | NEMA 324 Motor Mount to Metric 125mm Pump | 22 | 4 |
| M324xx160M | NEMA 324 Motor Mount to Metric 160mm Pump | 22 | 4 |
| M324xx180M | NEMA 324 Motor Mount to Metric 180mm Pump | 22 | 4 |
| M324xx2B | NEMA 324 Motor Mount to SAE B Pump | 22 | 4 |
| M324xx2C | NEMA 324 Motor Mount to SAE C Pump | 22 | 4 |
| M324xx2D | NEMA 324 Motor Mount to SAE D Pump | 22 | 4 |
| M324xxPVR50 | NEMA 324 Motor Mount to PVR50 Pump | 22 | 4 |
| M324xxxx45 | Steel NEMA 324 Motor Mount w/pump holes rotated 45 degrees | | 10 |
| M324xxxxM8 | Steel NEMA 324 Motor Mount w/4 additional holes on motor end to allow rotating mount +/-45 degrees | | 10 |
| M370xx | Model 300 Insert | 8 | 1 |
| M400Axxxx | Model 400 Hub Spline Bore | 7 | 2 |
| M400AxxxxC | Model 400 Hub Spline Bore w/Clamp | 7 | 2 |
| M400Bxxxx | Model 400 Hub Steel Bushed Spline Bore | 7 | 2 |
| M400BxxxxC | Model 400 Hub Steel Bushed Spline Bore w/Clamp | 7 | 2 |
| M400Mxxxx | Model 400 Hub Metric Bore & Key | 5 | 2 |
| M400R | Model 400 Hub No Bore | 5 | 1 |
| M400xxxxx | Model 400 Hub Bored & Keyed | 5 | 1 |
| M400xxxxxDSSxx | Model 400 Hub Bored & Keyed w/Double Set Screws | 2 | 2 |
| M444882C | NEMA 444 Motor Mount to SAE C Pump | 22 | 4 |
| M444882D | NEMA 444 Motor Mount to SAE D Pump | 22 | 4 |
| M444882E | NEMA 444 Motor Mount to SAE E Pump | 22 | 4 |
| M444xxxx45 | Steel NEMA 444 Motor Mount w/pump holes rotated 45 degrees | | 10 |
| M444xxxxM8 | Steel NEMA 444 Motor Mount w/4 additional holes on motor end to allow rotating mount +/-45 degrees | | 10 |
| M470xx | Model 400 Insert | 8 | 1 |
| M500Axxxx | Model 500 Hub Spline Bore | 7 | 2 |
| M500AxxxxC | Model 500 Hub Spline Bore w/Clamp | 7 | 2 |
| M500Bxxxx | Model 500 Hub Steel Bushed Spline Bore | 7 | 2 |



What is it, Where is it Index

| Part Number | Description | Catalog Page | Price Page |
|------------------|--|--------------|------------|
| M500BxxxxC | Model 500 Hub Steel Bushed Spline Bore w/Clamp | 7 | 2 |
| M500Mxxxx | Model 500 Hub Metric Bore & Key | 5 | 2 |
| M500R | Model 500 Hub No Bore | 5 | 1 |
| M500xxxxx | Model 500 Hub Bored & Keyed | 5 | 1 |
| M500xxxxxDSSxx | Model 500 Hub Bored & Keyed w/Double Set Screws | 2 | 2 |
| M570xx | Model 500 Insert | 8 | 1 |
| M600Axxxx | Model 600 Hub Spline Bore | 7 | 2 |
| M600AxxxxC | Model 600 Hub Spline Bore w/Clamp | 7 | 2 |
| M600Bxxxx | Model 600 Hub Steel Bushed Spline Bore | 7 | 2 |
| M600BxxxxC | Model 600 Hub Steel Bushed Spline Bore w/Clamp | 7 | 2 |
| M600Mxxxx | Model 600 Hub Metric Bore & Key | 5 | 2 |
| M600R | Model 600 Hub No Bore | 5 | 1 |
| M600xxxxx | Model 600 Hub Bored & Keyed | 5 | 1 |
| M600xxxxxDSSxx | Model 600 Hub Bored & Keyed w/Double Set Screws | 2 | 2 |
| M670xx | Model 600 Insert | 8 | 1 |
| M700Axxxx | Model 700 Hub Spline Bore | 7 | 2 |
| M700AxxxxC | Model 700 Hub Spline Bore w/Clamp | 7 | 2 |
| M700Bxxxx | Model 700 Hub Steel Bushed Spline Bore | 7 | 2 |
| M700BxxxxC | Model 700 Hub Steel Bushed Spline Bore w/Clamp | 7 | 2 |
| M700Mxxxx | Model 700 Hub Metric Bore & Key | 5 | 2 |
| M700R | Model 700 Hub No Bore | 5 | 1 |
| M700xxxxx | Model 700 Hub Bored & Keyed | 5 | 1 |
| M700xxxxxDSSxx | Model 700 Hub Bored & Keyed w/Double Set Screws | 2 | 2 |
| M770xx | Model 700 Insert | 8 | 1 |
| M800Axxxx | Model 800 Hub Spline Bore | 7 | 2 |
| M800AxxxxC | Model 800 Hub Spline Bore w/Clamp | 7 | 2 |
| M800Bxxxx | Model 800 Hub Steel Bushed Spline Bore | 7 | 2 |
| M800BxxxxC | Model 800 Hub Steel Bushed Spline Bore w/Clamp | 7 | 2 |
| M800Mxxxx | Model 800 Hub Metric Bore & Key | 5 | 2 |
| M800R | Model 800 Hub No Bore | 5 | 1 |
| M800xxxxx | Model 800 Hub Bored & Keyed | 5 | 1 |
| M800xxxxxDSSxx | Model 800 Hub Bored & Keyed w/Double Set Screws | 2 | 2 |
| M870xx | Model 800 Insert | 8 | 1 |
| M900Bxxxx | Model 900 Hub Steel Bushed Spline Bore | 7 | 2 |
| M900BxxxxC | Model 900 Hub Steel Bushed Spline Bore w/Clamp | 7 | 2 |
| M900Mxxxx | Model 900 Hub Metric Bore & Key | 5 | 2 |
| M900R | Model 900 Hub No Bore | 5 | 1 |
| M900xxxxx | Model 900 Hub Bored & Keyed | 5 | 1 |
| M900xxxxxDSSxx | Model 900 Hub Bored & Keyed w/Double Set Screws | 2 | 2 |
| M970xx | Model 900 Insert | 8 | 1 |
| MA-A034x-TP-AB | D03 Aluminum Tapping Plate A & B Ports on Sides - Size 4 Threads | 102 | 25 |
| MA-A034x-TP-PP | D03 Aluminum Perimeter Ported Tapping Plate - Size 4 Threads | 102 | 25 |
| MA-A034x-TP-PT | D03 Aluminum Tapping Plate P & T Ports on Sides - Size 4 Threads | 102 | 25 |
| MA-A03ZZ-OP-ZZ | D03 Aluminum Orifice Plate - No Threads | 100 | |
| MA-A03ZZ-TP-ZZ | D03 Aluminum Tapping Plate - No Threads | 102 | 25 |
| MA-A054x-TP-AB | D05 Aluminum Tapping Plate A & B Ports on Sides - Size 4 Threads | 103 | 25 |
| MA-A054x-TP-PP | D05 Aluminum Perimeter Ported Tapping Plate - Size 4 Threads | 103 | 25 |
| MA-A054x-TP-PT | D05 Aluminum Tapping Plate P & T Ports on Sides - Size 4 Threads | 103 | 25 |
| MA-A05ZZ-OP-ZZ | D05 Aluminum Orifice Plate - No Threads | 101 | 25 |
| MA-A05ZZ-PA-ZZ | D05 Aluminum Pilot Adaptor - No Threads | 98 | 25 |
| MA-A05ZZ-TP-ZZ | D05 Aluminum Tapping Plate - No Threads | 103 | 25 |
| MA-A05ZZ-UM-ZZ | D05 Aluminum Unloading Module - No Threads | 99 | 25 |
| MA-A084x-TP-AB | D08 Aluminum Tapping Plate A & B Ports on Sides - Size 4 Threads | 104 | 25 |
| MA-A084x-TP-PP | D08 Aluminum Perimeter Ported Tapping Plate - Size 4 Threads | 104 | 25 |
| MA-A084x-TP-PS | D08 Aluminum Tapping Plate All Ports on Short Sides - Size 4 Threads | 104 | 25 |
| MA-A084x-TP-PT | D08 Aluminum Tapping Plate P & T Ports on Sides - Size 4 Threads | 104 | 25 |
| MA-A08ZZ-TP-ZZ | D08 Aluminum Tapping Plate - No Threads | 104 | 25 |
| MAC-D12124-048/S | Anchor Double Channel, 1 3/4" Height, 48" Length, 12 Ga Steel | 148 | 39 |
| MAC-D12124-120/S | Anchor Double Channel, 1 3/4" Height, 120" Length, 12 Ga Steel | 148 | 39 |
| MAC-D12200-048/S | Anchor Double Channel, 2" Height, 48" Length, 12 Ga Steel | 148 | 39 |
| MAC-D12200-120/S | Anchor Double Channel, 2" Height, 120" Length, 12 Ga Steel | 148 | 39 |
| MAC-D14120-048/S | Anchor Double Channel, 1 5/8" Height, 48" Length, 14 Ga Steel | 148 | 39 |

What is it, Where is it Index



| Part Number | Description | Catalog Page | Price Page |
|--------------------|--|--------------|------------|
| MAC-D14120-048/SS4 | Anchor Double Channel, 1 5/8" Height, 48" Length, 14 Ga 304 Stainless Steel | 148 | 39 |
| MAC-D14120-048/SS6 | Anchor Double Channel, 1 5/8" Height, 48" Length, 14 Ga 316 Stainless Steel | 148 | 39 |
| MAC-D14120-120/S | Anchor Double Channel, 1 5/8" Height, 120" Length, 14 Ga Steel | 148 | 39 |
| MAC-D14120-120/SS4 | Anchor Double Channel, 1 5/8" Height, 120" Length, 14 Ga 304 Stainless Steel | 148 | 39 |
| MAC-D14120-120/SS6 | Anchor Double Channel, 1 5/8" Height, 120" Length, 14 Ga 316 Stainless Steel | 148 | 39 |
| MAC-S12028-036/S | Anchor Single Channel, 7/8" Height, 36" Length, 12 Ga Steel | 148 | 39 |
| MAC-S12028-048/S | Anchor Single Channel, 7/8" Height, 48" Length, 12 Ga Steel | 148 | 39 |
| MAC-S12028-120/S | Anchor Single Channel, 7/8" Height, 120" Length, 12 Ga Steel | 148 | 39 |
| MAC-S12100-036/S | Anchor Single Channel, 1" Height, 36" Length, 12 Ga Steel | 148 | 39 |
| MAC-S12100-048/S | Anchor Single Channel, 1" Height, 48" Length, 12 Ga Steel | 148 | 39 |
| MAC-S12100-120/S | Anchor Single Channel, 1" Height, 120" Length, 12 Ga Steel | 148 | 39 |
| MAC-S14026-048/S | Anchor Single Channel, 13/16" Height, 48" Length, 14 Ga Steel | 148 | 39 |
| MAC-S14026-048/SS4 | Anchor Single Channel, 13/16" Height, 48" Length, 14 Ga 304 Stainless Steel | 148 | 39 |
| MAC-S14026-048/SS6 | Anchor Single Channel, 13/16" Height, 48" Length, 14 Ga 316 Stainless Steel | 148 | 39 |
| MAC-S14026-120/S | Anchor Single Channel, 13/16" Height, 120" Length, 14 Ga Steel | 148 | 39 |
| MAC-S14026-120/SS4 | Anchor Single Channel, 13/16" Height, 120" Length, 14 Ga 304 Stainless Steel | 148 | 39 |
| MAC-S14026-120/SS6 | Anchor Single Channel, 13/16" Height, 120" Length, 14 Ga 316 Stainless Steel | 148 | 39 |
| MA-S034x-TP-AB | D03 Steel Tapping Plate A & B Ports on Sides - Size 4 Threads | 102 | 25 |
| MA-S034x-TP-PP | D03 Steel Perimeter Ported Tapping Plate - Size 4 Threads | 102 | 25 |
| MA-S034x-TP-PT | D03 Steel Tapping Plate P & T Ports on Sides - Size 4 Threads | 102 | 25 |
| MA-S03ZZ-OP-ZZ | D03 Steel Orifice Plate - No Threads | 100 | |
| MA-S03ZZ-TP-ZZ | D03 Steel Tapping Plate - No Threads | 102 | 25 |
| MA-S054x-TP-AB | D05 Steel Tapping Plate A & B Ports on Sides - Size 4 Threads | 103 | 25 |
| MA-S054x-TP-PP | D05 Steel Perimeter Ported Tapping Plate - Size 4 Threads | 103 | 25 |
| MA-S054x-TP-PT | D05 Steel Tapping Plate P & T Ports on Sides - Size 4 Threads | 103 | 25 |
| MA-S05ZZ-OP-ZZ | D05 Steel Orifice Plate - No Threads | 101 | 25 |
| MA-S05ZZ-PA-ZZ | D05 Steel Pilot Adaptor - No Threads | 98 | 25 |
| MA-S05ZZ-TP-ZZ | D05 Steel Tapping Plate - No Threads | 103 | 25 |
| MA-S05ZZ-UM-ZZ | D05 Steel Unloading Module - No Threads | 99 | 25 |
| MA-S084x-TP-AB | D08 Steel Tapping Plate A & B Ports on Sides - Size 4 Threads | 104 | 25 |
| MA-S084x-TP-PP | D08 Steel Perimeter Ported Tapping Plate - Size 4 Threads | 104 | 25 |
| MA-S084x-TP-PS | D08 Steel Tapping Plate All Ports on Short Sides - Size 4 Threads | 104 | 25 |
| MA-S084x-TP-PT | D08 Steel Tapping Plate P & T Ports on Sides - Size 4 Threads | 104 | 25 |
| MA-S08ZZ-TP-ZZ | D08 Steel Tapping Plate - No Threads | 104 | 23 |
| MBP-056/184 | Motor Base Plate, NEMA 056 thru 184 | 177 | 43 |
| MBP-213/256 | Motor Base Plate, NEMA 213 thru 256 | 177 | 43 |
| MBP-284/326 | Motor Base Plate, NEMA 284 thru 326 | 177 | 43 |
| MCC-008P | Channel Mounted Cushion Clamp, 1/4" Pipe | 146 | 38 |
| MCC-008T | Channel Mounted Cushion Clamp, .25" Tube | 146 | 38 |
| MCC-012P | Channel Mounted Cushion Clamp, 3/8" Pipe | 146 | 38 |
| MCC-012T | Channel Mounted Cushion Clamp, .375" Tube | 146 | 38 |
| MCC-016P | Channel Mounted Cushion Clamp, 1/2" Pipe | 146 | 38 |
| MCC-016T | Channel Mounted Cushion Clamp, .500" Tube | 146 | 38 |
| MCC-020T | Channel Mounted Cushion Clamp, .625" Tube | 146 | 38 |
| MCC-024P | Channel Mounted Cushion Clamp, 3/4" Pipe | 146 | 38 |
| MCC-024T | Channel Mounted Cushion Clamp, .750" Tube | 146 | 38 |
| MCC-028T | Channel Mounted Cushion Clamp, .875" Tube | 146 | 38 |
| MCC-100P | Channel Mounted Cushion Clamp, 1" Pipe | 146 | 38 |
| MCC-100T | Channel Mounted Cushion Clamp, 1.000" Tube | 146 | 38 |
| MCC-104T | Channel Mounted Cushion Clamp, 1.125" Tube | 146 | 38 |
| MCC-106T | Channel Mounted Cushion Clamp, 1.190" Tube | 146 | 38 |
| MCC-108P | Channel Mounted Cushion Clamp, 1 1/4" Pipe | 146 | 38 |
| MCC-108T | Channel Mounted Cushion Clamp, 1.250" Tube | 146 | 38 |
| MCC-112T | Channel Mounted Cushion Clamp, 1.375" Tube | 147 | 38 |
| MCC-116P | Channel Mounted Cushion Clamp, 1 1/2" Pipe | 147 | 38 |
| MCC-116T | Channel Mounted Cushion Clamp, 1.500" Tube | 147 | 38 |
| MCC-120T | Channel Mounted Cushion Clamp, 1.625" Tube | 147 | 38 |
| MCC-124T | Channel Mounted Cushion Clamp, 1.750" Tube | 147 | 38 |
| MCC-128T | Channel Mounted Cushion Clamp, 1.875" Tube | 147 | 38 |
| MCC-200P | Channel Mounted Cushion Clamp, 2" Pipe | 147 | 38 |
| MCC-200T | Channel Mounted Cushion Clamp, 2.000" Tube | 147 | 38 |
| MCC-204T | Channel Mounted Cushion Clamp, 2.125" Tube | 147 | 38 |



What is it, Where is it Index

| Part Number | Description | Catalog Page | Price Page |
|-------------|--|--------------|------------|
| MCC-208T | Channel Mounted Cushion Clamp, 2.205" Tube | 147 | 38 |
| MCC-212T | Channel Mounted Cushion Clamp, 2.375" Tube | 147 | 38 |
| MCC-216P | Channel Mounted Cushion Clamp, 2 1/2" Pipe | 147 | 38 |
| MCC-216T | Channel Mounted Cushion Clamp, 2.500" Tube | 147 | 38 |
| MCC-220T | Channel Mounted Cushion Clamp, 2.625" Tube | 147 | 38 |
| MCC-228T | Channel Mounted Cushion Clamp, 2.875" Tube | 147 | 38 |
| MCC-300P | Channel Mounted Cushion Clamp, 3" Pipe | 147 | 38 |
| MCC-300T | Channel Mounted Cushion Clamp, 3.000" Tube | 147 | 38 |
| MCC-304T | Channel Mounted Cushion Clamp, 3.125" Tube | 147 | 38 |
| MCC-316P | Channel Mounted Cushion Clamp, 3 1/2" Pipe | 147 | 38 |
| MCC-320T | Channel Mounted Cushion Clamp, 3.625" Tube | 147 | 38 |
| MCC-400P | Channel Mounted Cushion Clamp, 4" Pipe | 147 | 38 |
| MCC-404T | Channel Mounted Cushion Clamp, 4.125" Tube | 147 | 38 |
| MCC-500P | Channel Mounted Cushion Clamp, 5" Pipe | 147 | 38 |
| MCC-600P | Channel Mounted Cushion Clamp, 6" Pipe | 147 | 38 |
| MDB056-B | Motor Dampening Bar, NEMA 056 Bolt Down Style | 172 | 44 |
| MDB056-W | Motor Dampening Bar, NEMA 056 Weld Style | 174 | 44 |
| MDB071-B | Motor Dampening Bar, IEC 071 Bolt Down Style | 173 | 44 |
| MDB071-W | Motor Dampening Bar, IEC 071 Weld Style | 175 | 44 |
| MDB080-B | Motor Dampening Bar, IEC 080 Bolt Down Style | 173 | 44 |
| MDB080-W | Motor Dampening Bar, IEC 080 Weld Style | 175 | 44 |
| MDB090L-B | Motor Dampening Bar, IEC 090 L Bolt Down Style | 173 | 44 |
| MDB090L-W | Motor Dampening Bar, IEC 090 L Weld Style | 175 | 44 |
| MDB090S-B | Motor Dampening Bar, IEC 090 S Bolt Down Style | 173 | 44 |
| MDB090S-W | Motor Dampening Bar, IEC 090 S Weld Style | 175 | 44 |
| MDB100L-B | Motor Dampening Bar, IEC 100 L Bolt Down Style | 173 | 44 |
| MDB100L-W | Motor Dampening Bar, IEC 100 L Weld Style | 175 | 44 |
| MDB112M-B | Motor Dampening Bar, IEC 112 M Bolt Down Style | 173 | 44 |
| MDB112M-W | Motor Dampening Bar, IEC 112 M Weld Style | 175 | 44 |
| MDB132M-B | Motor Dampening Bar, IEC 132 M Bolt Down Style | 173 | 44 |
| MDB132M-W | Motor Dampening Bar, IEC 132 M Weld Style | 175 | 44 |
| MDB132S-B | Motor Dampening Bar, IEC 132 S Bolt Down Style | 173 | 44 |
| MDB132S-W | Motor Dampening Bar, IEC 132 S Weld Style | 175 | 44 |
| MDB143-B | Motor Dampening Bar, NEMA 143 Bolt Down Style | 172 | 44 |
| MDB143-W | Motor Dampening Bar, NEMA 143 Weld Style | 174 | 44 |
| MDB145-B | Motor Dampening Bar, NEMA 145 Bolt Down Style | 172 | 44 |
| MDB145-W | Motor Dampening Bar, NEMA 145 Weld Style | 174 | 44 |
| MDB160L-B | Motor Dampening Bar, IEC 160 L Bolt Down Style | 173 | 44 |
| MDB160L-W | Motor Dampening Bar, IEC 160 L Weld Style | 175 | 44 |
| MDB160M-B | Motor Dampening Bar, IEC 160 M Bolt Down Style | 173 | 44 |
| MDB160M-W | Motor Dampening Bar, IEC 160 M Weld Style | 175 | 44 |
| MDB180L-B | Motor Dampening Bar, IEC 180 L Bolt Down Style | 173 | 44 |
| MDB180L-W | Motor Dampening Bar, IEC 180 L Weld Style | 175 | 44 |
| MDB180M-B | Motor Dampening Bar, IEC 180 M Bolt Down Style | 173 | 44 |
| MDB180M-W | Motor Dampening Bar, IEC 180 M Weld Style | 175 | 44 |
| MDB182-B | Motor Dampening Bar, NEMA 182 Bolt Down Style | 172 | 44 |
| MDB182-W | Motor Dampening Bar, NEMA 182 Weld Style | 174 | 44 |
| MDB184-B | Motor Dampening Bar, NEMA 184 Bolt Down Style | 172 | 44 |
| MDB184-W | Motor Dampening Bar, NEMA 184 Weld Style | 174 | 44 |
| MDB200L-B | Motor Dampening Bar, IEC 200 L Bolt Down Style | 173 | 44 |
| MDB200L-W | Motor Dampening Bar, IEC 200 L Weld Style | 175 | 44 |
| MDB213-B | Motor Dampening Bar, NEMA 213 Bolt Down Style | 172 | 44 |
| MDB213-W | Motor Dampening Bar, NEMA 213 Weld Style | 174 | 44 |
| MDB215-B | Motor Dampening Bar, NEMA 215 Bolt Down Style | 172 | 44 |
| MDB215-W | Motor Dampening Bar, NEMA 215 Weld Style | 174 | 44 |
| MDB225M-B | Motor Dampening Bar, IEC 225 M Bolt Down Style | 173 | 44 |
| MDB225M-W | Motor Dampening Bar, IEC 225 M Weld Style | 175 | 44 |
| MDB225S-B | Motor Dampening Bar, IEC 225 S Bolt Down Style | 173 | 44 |
| MDB225S-W | Motor Dampening Bar, IEC 225 S Weld Style | 175 | 44 |
| MDB250M-B | Motor Dampening Bar, IEC 250 M Bolt Down Style | 173 | 44 |
| MDB250M-W | Motor Dampening Bar, IEC 250 M Weld Style | 175 | 44 |
| MDB254-B | Motor Dampening Bar, NEMA 254 Bolt Down Style | 172 | 44 |

What is it, Where is it Index



| Part Number | Description | Catalog Page | Price Page |
|--------------|--|--------------|------------|
| MDB254-W | Motor Dampening Bar, NEMA 254 Weld Style | 174 | 44 |
| MDB256-B | Motor Dampening Bar, NEMA 256 Bolt Down Style | 172 | 44 |
| MDB256-W | Motor Dampening Bar, NEMA 256 Weld Style | 174 | 44 |
| MDB280M-B | Motor Dampening Bar, NEMA 256 Bolt Down Style | 173 | 44 |
| MDB280M-W | Motor Dampening Bar, NEMA 256 Weld Style | 175 | 44 |
| MDB280S-B | Motor Dampening Bar, IEC 280 S Bolt Down Style | 173 | 44 |
| MDB280S-W | Motor Dampening Bar, IEC 280 S Weld Style | 175 | 44 |
| MDB284-B | Motor Dampening Bar, NEMA 284 Bolt Down Style | 172 | 44 |
| MDB284-W | Motor Dampening Bar, NEMA 284 Weld Style | 174 | 44 |
| MDB286-B | Motor Dampening Bar, NEMA 286 Bolt Down Style | 172 | 44 |
| MDB286-W | Motor Dampening Bar, NEMA 286 Weld Style | 174 | 44 |
| MDB315L-B | Motor Dampening Bar, IEC 315 L Bolt Down Style | 173 | 44 |
| MDB315L-W | Motor Dampening Bar, IEC 315 L Weld Style | 175 | 44 |
| MDB315M-B | Motor Dampening Bar, IEC 315 M Bolt Down Style | 173 | 44 |
| MDB315M-W | Motor Dampening Bar, IEC 315 M Weld Style | 175 | 44 |
| MDB315S-B | Motor Dampening Bar, IEC 315 S Bolt Down Style | 173 | 44 |
| MDB315S-W | Motor Dampening Bar, IEC 315 S Weld Style | 175 | 44 |
| MDB324-B | Motor Dampening Bar, NEMA 324 Bolt Down Style | 172 | 44 |
| MDB324-W | Motor Dampening Bar, NEMA 324 Weld Style | 174 | 44 |
| MDB326-B | Motor Dampening Bar, NEMA 326 Bolt Down Style | 172 | 44 |
| MDB326-W | Motor Dampening Bar, NEMA 326 Weld Style | 174 | 44 |
| MDB364-B | Motor Dampening Bar, NEMA 364 Bolt Down Style | 172 | 44 |
| MDB364-W | Motor Dampening Bar, NEMA 364 Weld Style | 174 | 44 |
| MDB365-B | Motor Dampening Bar, NEMA 365 Bolt Down Style | 172 | 44 |
| MDB365-W | Motor Dampening Bar, NEMA 365 Weld Style | 174 | 44 |
| MDB404-B | Motor Dampening Bar, NEMA 404 Bolt Down Style | 172 | 44 |
| MDB404-W | Motor Dampening Bar, NEMA 404 Weld Style | 174 | 44 |
| MDB405-B | Motor Dampening Bar, NEMA 405 Bolt Down Style | 172 | 44 |
| MDB405-W | Motor Dampening Bar, NEMA 405 Weld Style | 174 | 44 |
| MDB444-B | Motor Dampening Bar, NEMA 444 Bolt Down Style | 172 | 44 |
| MDB444-W | Motor Dampening Bar, NEMA 444 Weld Style | 174 | 44 |
| MDB445-B | Motor Dampening Bar, NEMA 445 Bolt Down Style | 172 | 44 |
| MDB445-W | Motor Dampening Bar, NEMA 445 Weld Style | 174 | 44 |
| MWP056-256 | Motor Dampening Bar Weld Pad Kit, NEMA 056 thru 256 | 176 | 45 |
| MWP071-132M | Motor Dampening Bar Weld Pad Kit, IEC 071 thru IEC 132M | 176 | 45 |
| MWP160M-180L | Motor Dampening Bar Weld Pad Kit, IEC 160M thru IEC 180L | 176 | 45 |
| MWP200L-315L | Motor Dampening Bar Weld Pad Kit, IEC 200L thru 315L | 176 | 45 |
| MWP284-286 | Motor Dampening Bar Weld Pad Kit, NEMA 284 thru 286 | 176 | 45 |
| MWP324-365 | Motor Dampening Bar Weld Pad Kit, NEMA 324 thru 365 | 176 | 45 |
| MWP404-405 | Motor Dampening Bar Weld Pad Kit, NEMA 404 thru 405 | 176 | 45 |
| MWP444-449 | Motor Dampening Bar Weld Pad Kit, NEMA 444 thru 449 | 176 | 45 |
| ORK-12000 | Buna-N O'Ring Kit | 178 | 45 |
| ORK-12001 | Viton O'Ring Kit | 178 | 45 |
| P090xxxxx | Model PM90 Hub Bored & Keyed | 15 | 3 |
| P097xx | Model PM90 Insert | 14 | 3 |
| PLLG-03T | Premium Line Liquid Level Gauge, 3" with Temp | 171 | 43 |
| PLLG-05T | Premium Line Liquid Level Gauge, 5" with Temp | 171 | 43 |
| PLLG-10T | Premium Line Liquid Level Gauge, 10" with Temp | 171 | 43 |
| PS-400-115 | Single Pressure Switch | 169 | 43 |
| PS-400-215 | Double Pressure Switch | 169 | 43 |
| PS-400-315 | Triple Pressure Switch | 169 | 43 |
| R010-01024 | R Series, Size 10 Rod End Coupler, 5/16-24 Thread | 183 | 45 |
| R010-01224 | R Series, Size 10 Rod End Coupler, 3/8-24 Thread | 183 | 45 |
| R020-01420 | R Series, Size 20 Rod End Coupler, 7/16-20 Thread | 183 | 45 |
| R020-01620 | R Series, Size 20 Rod End Coupler, 1/2-20 Thread | 183 | 45 |
| R020-02018 | R Series, Size 20 Rod End Coupler, 5/8-18 Thread | 183 | 45 |
| R030-02416 | R Series, Size 30 Rod End Coupler, 3/4-16 Thread | 183 | 45 |
| R030-02814 | R Series, Size 30 Rod End Coupler, 7/8-14 Thread | 183 | 45 |
| R040-10014 | R Series, Size 40 Rod End Coupler, 1-14 Thread | 183 | 45 |
| R040-10812 | R Series, Size 40 Rod End Coupler, 1 1/2-12 Thread | 183 | 45 |
| RDVS40-2 | Dual Vertical Reservoir, 40 Gallon - Series 2 | 122 | 32 |
| RDVS50-3 | Dual Vertical Reservoir, 50 Gallon - Series 3 | 122 | 32 |



What is it, Where is it Index

| Part Number | Description | Catalog Page | Price Page |
|-------------|---|--------------|------------|
| RDVS60-2 | Dual Vertical Reservoir, 60 Gallon - Series 2 | 122 | 32 |
| RDVS60-3 | Dual Vertical Reservoir, 60 Gallon - Series 3 | 122 | 32 |
| REC06K | 6" Reservoir End Cover | 135 | 35 |
| REC12CN | 12" Reservoir End Cover with 3/4" NPT Drain Only | 136 | 35 |
| REC12CS | 12" Reservoir End Cover with #12 SAE Drain Only | 136 | 35 |
| REC12CX | 12" Reservoir End Cover Only | 136 | 35 |
| REC12KN | 12" Reservoir End Cover Kit with 3/4" NPT Drain | 136 | 35 |
| REC12KS | 12" Reservoir End Cover Kit with #12 SAE Drain | 136 | 35 |
| REC12KX | 12" Reservoir End Cover Kit | 136 | 35 |
| REC14CN | 14" Reservoir End Cover with 3/4" NPT Drain Only | 136 | 35 |
| REC14CS | 14" Reservoir End Cover with #12 SAE Drain Only | 136 | 35 |
| REC14CX | 14" Reservoir End Cover Only | 136 | 35 |
| REC14KN | 14" Reservoir End Cover Kit with 3/4" NPT Drain | 136 | 35 |
| REC14KS | 14" Reservoir End Cover Kit with #12 SAE Drain | 136 | 35 |
| REC14KX | 14" Reservoir End Cover Kit | 136 | 35 |
| REC16CN | 16" Reservoir End Cover with 3/4" NPT Drain Only | 136 | 35 |
| REC16CS | 16" Reservoir End Cover with #12 SAE Drain Only | 136 | 35 |
| REC16CX | 16" Reservoir End Cover Only | 136 | 35 |
| REC16KN | 16" Reservoir End Cover Kit with 3/4" NPT Drain | 136 | 35 |
| REC16KS | 16" Reservoir End Cover Kit with #12 SAE Drain | 136 | 35 |
| REC16KX | 16" Reservoir End Cover Kit | 136 | 35 |
| REC18CN | 18" Reservoir End Cover with 3/4" NPT Drain Only | 136 | 35 |
| REC18CS | 18" Reservoir End Cover with #12 SAE Drain Only | 136 | 35 |
| REC18CX | 18" Reservoir End Cover Only | 136 | 35 |
| REC18KN | 18" Reservoir End Cover Kit with 3/4" NPT Drain | 136 | 35 |
| REC18KS | 18" Reservoir End Cover Kit with #12 SAE Drain | 136 | 35 |
| REC18KX | 18" Reservoir End Cover Kit | 136 | 35 |
| RHC010-FT | Horizontal Style Reservoir, 10 Gallon Capacity with Fixed Top | 131 | 34 |
| RHC020-FT | Horizontal Style Reservoir, 20 Gallon Capacity with Fixed Top | 131 | 34 |
| RHC030-FT | Horizontal Style Reservoir, 30 Gallon Capacity with Fixed Top | 131 | 34 |
| RHC040-FT | Horizontal Style Reservoir, 40 Gallon Capacity with Fixed Top | 131 | 34 |
| RHC060-FT | Horizontal Style Reservoir, 60 Gallon Capacity with Fixed Top | 131 | 34 |
| RHP010-RT | Horizontal Style Reservoir, 10 Gallon Capacity with Removable Top | 132 | 34 |
| RHP020-RT | Horizontal Style Reservoir, 20 Gallon Capacity with Removable Top | 132 | 34 |
| RHP030-RT | Horizontal Style Reservoir, 30 Gallon Capacity with Removable Top | 132 | 34 |
| RHP040-RT | Horizontal Style Reservoir, 40 Gallon Capacity with Removable Top | 132 | 34 |
| RJDPP010 | Reservoir Drip Pan for 10 Gallon JIC Reservoir without Riser | 133 | 34 |
| RJDPP015 | Reservoir Drip Pan for 15 Gallon JIC Reservoir without Riser | 133 | 34 |
| RJDPP020 | Reservoir Drip Pan for 20 Gallon JIC Reservoir without Riser | 133 | 34 |
| RJDPP030 | Reservoir Drip Pan for 30, 40 & 50 Gallon JIC Reservoir without Riser | 133 | 34 |
| RJDPP060 | Reservoir Drip Pan for 60 Gallon JIC Reservoir without Riser | 133 | 34 |
| RJDPP080 | Reservoir Drip Pan for 80 & 100 Gallon JIC Reservoir without Riser | 133 | 34 |
| RJDPP120 | Reservoir Drip Pan for 120 & 150 Gallon JIC Reservoir without Riser | 133 | 34 |
| RJDPP200 | Reservoir Drip Pan for 200 Gallon JIC Reservoir without Riser | 133 | 34 |
| RJDPR010 | Reservoir Drip Pan for 10 Gallon JIC Reservoir with Riser | 133 | 34 |
| RJDPR015 | Reservoir Drip Pan for 15 Gallon JIC Reservoir with Riser | 133 | 34 |
| RJDPR020 | Reservoir Drip Pan for 20 Gallon JIC Reservoir with Riser | 133 | 34 |
| RJDPR030 | Reservoir Drip Pan for 30 Gallon JIC Reservoir with Riser | 133 | 34 |
| RJDPR060 | Reservoir Drip Pan for 60 Gallon JIC Reservoir with Riser | 133 | 34 |
| RJDPR080 | Reservoir Drip Pan for 80 Gallon JIC Reservoir with Riser | 133 | 34 |
| RJDPR120 | Reservoir Drip Pan for 120 Gallon JIC Reservoir with Riser | 133 | 34 |
| RJDPR200 | Reservoir Drip Pan for 200 Gallon JIC Reservoir with Riser | 133 | 34 |
| RJIC010-FT | JIC Style Reservoir, 10 Gallon Capacity with Fixed Top | 124 | 33 |
| RJIC010-RB | JIC Style Reservoir, 10 Gallon Capacity with Removable Top & Baffle | 124 | 33 |
| RJIC010-RT | JIC Style Reservoir, 10 Gallon Capacity with Removable Top | 124 | 33 |
| RJIC015-FT | JIC Style Reservoir, 15 Gallon Capacity with Fixed Top | 124 | 33 |
| RJIC015-RB | JIC Style Reservoir, 15 Gallon Capacity with Removable Top & Baffle | 124 | 33 |
| RJIC015-RT | JIC Style Reservoir, 15 Gallon Capacity with Removable Top | 124 | 33 |
| RJIC020-FT | JIC Style Reservoir, 20 Gallon Capacity with Fixed Top | 124 | 33 |
| RJIC020-RB | JIC Style Reservoir, 20 Gallon Capacity with Removable Top & Baffle | 124 | 33 |
| RJIC020-RT | JIC Style Reservoir, 20 Gallon Capacity with Removable Top | 124 | 33 |
| RJIC030-FT | JIC Style Reservoir, 30 Gallon Capacity with Fixed Top | 124 | 33 |

What is it, Where is it Index



| Part Number | Description | Catalog Page | Price Page |
|-------------|--|--------------|------------|
| RJIC030-RB | JIC Style Reservoir, 30 Gallon Capacity with Removable Top & Baffle | 124 | 33 |
| RJIC030-RT | JIC Style Reservoir, 30 Gallon Capacity with Removable Top | 124 | 33 |
| RJIC040-FT | JIC Style Reservoir, 40 Gallon Capacity with Fixed Top | 124 | 33 |
| RJIC040-RB | JIC Style Reservoir, 40 Gallon Capacity with Removable Top & Baffle | 124 | 33 |
| RJIC040-RT | JIC Style Reservoir, 40 Gallon Capacity with Removable Top | 124 | 33 |
| RJIC050-FT | JIC Style Reservoir, 50 Gallon Capacity with Fixed Top | 124 | 33 |
| RJIC050-RB | JIC Style Reservoir, 50 Gallon Capacity with Removable Top & Baffle | 124 | 33 |
| RJIC050-RT | JIC Style Reservoir, 50 Gallon Capacity with Removable Top | 124 | 33 |
| RJIC060-FT | JIC Style Reservoir, 60 Gallon Capacity with Fixed Top | 124 | 33 |
| RJIC060-RB | JIC Style Reservoir, 60 Gallon Capacity with Removable Top & Baffle | 124 | 33 |
| RJIC060-RT | JIC Style Reservoir, 60 Gallon Capacity with Removable Top | 124 | 33 |
| RJIC080-FT | JIC Style Reservoir, 80 Gallon Capacity with Fixed Top | 124 | 33 |
| RJIC080-RB | JIC Style Reservoir, 80 Gallon Capacity with Removable Top & Baffle | 124 | 33 |
| RJIC080-RT | JIC Style Reservoir, 80 Gallon Capacity with Removable Top | 124 | 33 |
| RJIC100-FT | JIC Style Reservoir, 100 Gallon Capacity with Fixed Top | 124 | 33 |
| RJIC100-RB | JIC Style Reservoir, 100 Gallon Capacity with Removable Top & Baffle | 124 | 33 |
| RJIC100-RT | JIC Style Reservoir, 100 Gallon Capacity with Removable Top | 124 | 33 |
| RJIC120-FT | JIC Style Reservoir, 120 Gallon Capacity with Fixed Top | 124 | 33 |
| RJIC120-RB | JIC Style Reservoir, 120 Gallon Capacity with Removable Top & Baffle | 124 | 33 |
| RJIC120-RT | JIC Style Reservoir, 120 Gallon Capacity with Removable Top | 124 | 33 |
| RJIC150-FT | JIC Style Reservoir, 150 Gallon Capacity with Fixed Top | 124 | 33 |
| RJIC150-RB | JIC Style Reservoir, 150 Gallon Capacity with Removable Top & Baffle | 124 | 33 |
| RJIC150-RT | JIC Style Reservoir, 150 Gallon Capacity with Removable Top | 124 | 33 |
| RJIC200-FT | JIC Style Reservoir, 200 Gallon Capacity with Fixed Top | 124 | 33 |
| RJIC200-RB | JIC Style Reservoir, 200 Gallon Capacity with Removable Top & Baffle | 124 | 33 |
| RJIC200-RT | JIC Style Reservoir, 200 Gallon Capacity with Removable Top | 124 | 33 |
| RJSM010 | Reservoir Stacking Modult for 10 Gallon JIC Reservoir | 134 | 35 |
| RJSM015 | Reservoir Stacking Modult for 15 Gallon JIC Reservoir | 134 | 35 |
| RJSM020 | Reservoir Stacking Modult for 20 Gallon JIC Reservoir | 134 | 35 |
| RJSM030 | Reservoir Stacking Modult for 30, 40 & 50 Gallon JIC Reservoir | 134 | 35 |
| RJSM060 | Reservoir Stacking Modult for 60 Gallon JIC Reservoir | 134 | 35 |
| RJSM080 | Reservoir Stacking Modult for 80 Gallon JIC Reservoir | 134 | 35 |
| RJSM100 | Reservoir Stacking Modult for 100 Gallon JIC Reservoir | 134 | 35 |
| RJSM120 | Reservoir Stacking Modult for 120 & 150 Gallon JIC Reservoir | 134 | 35 |
| RJSM200 | Reservoir Stacking Modult for 200 Gallon JIC Reservoir | 134 | 35 |
| RLC010-FT | L Style Reservoir, 10 Gallon Capacity with Fixed Top | 125 | 33 |
| RLC020-FT | L Style Reservoir, 20 Gallon Capacity with Fixed Top | 125 | 33 |
| RLC030-FT | L Style Reservoir, 30 Gallon Capacity with Fixed Top | 125 | 33 |
| RLC045-FT | L Style Reservoir, 45 Gallon Capacity with Fixed Top | 125 | 33 |
| RLC060-FT | L Style Reservoir, 60 Gallon Capacity with Fixed Top | 125 | 33 |
| RLC080-FT | L Style Reservoir, 80 Gallon Capacity with Fixed Top | 125 | 33 |
| RLC100-FT | L Style Reservoir, 100 Gallon Capacity with Fixed Top | 125 | 33 |
| RLC120-FT | L Style Reservoir, 120 Gallon Capacity with Fixed Top | 125 | 33 |
| RLC150-FT | L Style Reservoir, 150 Gallon Capacity with Fixed Top | 125 | 33 |
| RLC200-FT | L Style Reservoir, 200 Gallon Capacity with Fixed Top | 125 | 33 |
| RLF-008P | Reservoir Return Line Flange, 1/2" NPT | 141 | 37 |
| RLF-008T | Reservoir Return Line Flange, 1/2" Tube | 141 | 37 |
| RLF-012P | Reservoir Return Line Flange, 3/4" NPT | 141 | 37 |
| RLF-012T | Reservoir Return Line Flange, 3/4" Tube | 141 | 37 |
| RLF-100P | Reservoir Return Line Flange, 1" NPT | 141 | 37 |
| RLF-100T | Reservoir Return Line Flange, 1" Tube | 141 | 37 |
| RLF-104P | Reservoir Return Line Flange, 1 1/4" NPT | 141 | 37 |
| RLF-104T | Reservoir Return Line Flange, 1 1/4" Tube | 141 | 37 |
| RLF-108P | Reservoir Return Line Flange, 1 1/2" NPT | 141 | 37 |
| RLF-108T | Reservoir Return Line Flange, 1 1/2" Tube | 141 | 37 |
| RLF-200P | Reservoir Return Line Flange, 2" NPT | 141 | 37 |
| RLF-200T | Reservoir Return Line Flange, 2" Tube | 141 | 37 |
| RLFE-000P | Economy Reservoir Return Line Flange, Blank | 142 | 37 |
| RLFE-006T | Economy Reservoir Return Line Flange, 3/8" Tube | 142 | 37 |
| RLFE-008P | Economy Reservoir Return Line Flange, 1/2" NPT | 142 | 37 |
| RLFE-008T | Economy Reservoir Return Line Flange, 1/2" Tube | 142 | 37 |
| RLFE-012P | Economy Reservoir Return Line Flange, 3/4" NPT | 142 | 37 |



What is it, Where is it Index

| Part Number | Description | Catalog Page | Price Page |
|--------------|--|--------------|------------|
| RLFE-012T | Economy Reservoir Return Line Flange, 3/4" Tube | 142 | 37 |
| RLFE-100P | Economy Reservoir Return Line Flange, 1" NPT | 142 | 37 |
| RLFE-100T | Economy Reservoir Return Line Flange, 1" Tube | 142 | 37 |
| RLFE-104P | Economy Reservoir Return Line Flange, 1 1/4" NPT | 142 | 37 |
| RLFE-104T | Economy Reservoir Return Line Flange, 1 1/4" Tube | 142 | 37 |
| RLFE-108P | Economy Reservoir Return Line Flange, 1 1/2" NPT | 142 | 37 |
| RLFE-108T | Economy Reservoir Return Line Flange, 1 1/2" Tube | 142 | 37 |
| RLFE-200P | Economy Reservoir Return Line Flange, 2" NPT | 142 | 37 |
| RLFE-200T | Economy Reservoir Return Line Flange, 2" Tube | 142 | 37 |
| RLP010-HT | L Style Reservoir, 10 Gallon Capacity with Hinged Top | 127 | 34 |
| RLP010-RT | L Style Reservoir, 10 Gallon Capacity with Removable Top | 126 | 33 |
| RLP020-HT | L Style Reservoir, 20 Gallon Capacity with Hinged Top | 127 | 34 |
| RLP020-RT | L Style Reservoir, 20 Gallon Capacity with Removable Top | 126 | 33 |
| RLP030-HT | L Style Reservoir, 30 Gallon Capacity with Hinged Top | 127 | 34 |
| RLP030-RT | L Style Reservoir, 30 Gallon Capacity with Removable Top | 126 | 33 |
| RLP045-HT | L Style Reservoir, 45 Gallon Capacity with Hinged Top | 127 | 34 |
| RLP045-RT | L Style Reservoir, 45 Gallon Capacity with Removable Top | 126 | 33 |
| RLP060-HT | L Style Reservoir, 60 Gallon Capacity with Hinged Top | 127 | 34 |
| RLP060-RT | L Style Reservoir, 60 Gallon Capacity with Removable Top | 126 | 33 |
| RLP080-HT | L Style Reservoir, 80 Gallon Capacity with Hinged Top | 127 | 34 |
| RLP080-PHT | L Style Reservoir, 80 Gallon Capacity with Partially Hinged Top | 128 | 34 |
| RLP080-RT | L Style Reservoir, 80 Gallon Capacity with Removable Top | 126 | 33 |
| RLP100-HT | L Style Reservoir, 100 Gallon Capacity with Hinged Top | 127 | 34 |
| RLP100-PHT | L Style Reservoir, 100 Gallon Capacity with Partially Hinged Top | 128 | 34 |
| RLP100-RT | L Style Reservoir, 100 Gallon Capacity with Removable Top | 126 | 33 |
| RLP120-HT | L Style Reservoir, 120 Gallon Capacity with Hinged Top | 127 | 34 |
| RLP120-PHT | L Style Reservoir, 120 Gallon Capacity with Partially Hinged Top | 128 | 34 |
| RLP120-RT | L Style Reservoir, 120 Gallon Capacity with Removable Top | 126 | 33 |
| RLP150-HT | L Style Reservoir, 150 Gallon Capacity with Hinged Top | 127 | 34 |
| RLP150-PHT | L Style Reservoir, 150 Gallon Capacity with Partially Hinged Top | 128 | 34 |
| RLP150-RT | L Style Reservoir, 150 Gallon Capacity with Removable Top | 126 | 33 |
| RLP200-HT | L Style Reservoir, 200 Gallon Capacity with Hinged Top | 127 | 34 |
| RLP200-PHT | L Style Reservoir, 200 Gallon Capacity with Partially Hinged Top | 128 | 34 |
| RLP200-RT | L Style Reservoir, 200 Gallon Capacity with Removable Top | 126 | 33 |
| RPT010-HT | T Style Reservoir, 10 Gallon Capacity with Hinged Top | 129 | 34 |
| RPT020-HT | T Style Reservoir, 20 Gallon Capacity with Hinged Top | 129 | 34 |
| RPT030-HT | T Style Reservoir, 30 Gallon Capacity with Hinged Top | 129 | 34 |
| RPT045-HT | T Style Reservoir, 45 Gallon Capacity with Hinged Top | 129 | 34 |
| RPT060-HT | T Style Reservoir, 60 Gallon Capacity with Hinged Top | 129 | 34 |
| RPT080-HT | T Style Reservoir, 80 Gallon Capacity with Hinged Top | 129 | 34 |
| RPT080-PHT | T Style Reservoir, 80 Gallon Capacity with Partially Hinged Top | 130 | 34 |
| RPT100-HT | T Style Reservoir, 100 Gallon Capacity with Hinged Top | 129 | 34 |
| RPT100-PHT | T Style Reservoir, 100 Gallon Capacity with Partially Hinged Top | 130 | 34 |
| RPT120-HT | T Style Reservoir, 120 Gallon Capacity with Hinged Top | 129 | 34 |
| RPT120-PHT | T Style Reservoir, 120 Gallon Capacity with Partially Hinged Top | 130 | 34 |
| RPT150-HT | T Style Reservoir, 150 Gallon Capacity with Hinged Top | 129 | 34 |
| RPT150-PHT | T Style Reservoir, 150 Gallon Capacity with Partially Hinged Top | 130 | 34 |
| RPT200-HT | T Style Reservoir, 200 Gallon Capacity with Hinged Top | 129 | 34 |
| RPT200-PHT | T Style Reservoir, 200 Gallon Capacity with Partially Hinged Top | 130 | 34 |
| RPT300-HT | T Style Reservoir, 300 Gallon Capacity with Hinged Top | 129 | 34 |
| RPT400-PHT | T Style Reservoir, 400 Gallon Capacity with Hinged Top | 129 | 34 |
| RV-C10-2-02 | C10-2 Valve Cartridge for D03 Hi Flow Manifolds and All Subplates, 50 - 200 psi | 197 | 25 |
| RV-C10-2-15 | C10-2 Valve Cartridge for D03 Hi Flow Manifolds and All Subplates, 50 - 1500 psi | 197 | 25 |
| RV-C10-2-30 | C10-2 Valve Cartridge for D03 Hi Flow Manifolds and All Subplates, 1500 - 3000 psi | 197 | 25 |
| RV-C10-2R-02 | C10-2 Valve Cartridge for Old Style D03 & D03 Series Manifolds , 50 - 200 psi | 197 | 25 |
| RV-C10-2R-15 | C10-2 Valve Cartridge for Old Style D03 & D03 Series Manifolds , 50 - 1500 psi | 197 | 25 |
| RV-C10-2R-30 | C10-2 Valve Cartridge for Old Style D03 & D03 Series Manifolds , 1500 - 3000 psi | 197 | 25 |
| RVP02 | Vertical ECONO Reservoir, 2 Gallon Capacity | 117 | 32 |
| RVP03 | Vertical ECONO Reservoir, 3 Gallon Capacity | 117 | 32 |
| RVP05 | Vertical ECONO Reservoir, 5 Gallon Capacity | 117 | 32 |
| RVP08 | Vertical ECONO Reservoir, 8 Gallon Capacity | 118 | 32 |
| RVP10 | Vertical ECONO Reservoir, 10 Gallon Capacity | 118 | 32 |
| RVP14 | Vertical ECONO Reservoir, 14 Gallon Capacity | 118 | 32 |
| RVP20 | Vertical ECONO Reservoir, 20 Gallon Capacity | 119 | 32 |
| RVP25 | Vertical ECONO Reservoir, 25 Gallon Capacity | 119 | 32 |

What is it, Where is it Index



| Part Number | Description | Catalog Page | Price Page |
|-------------|--|--------------|------------|
| RVPT-1 | ECONO Vertical Reservoir Cover Plate, Blank | 120 | 32 |
| RVPT-2 | ECONO Vertical Reservoir Cover Plate with 1/2" NPT Filler Breather Cutout | 120 | 32 |
| RVPT-3 | ECONO Vertical Reservoir Cover Plate with 1/2" NPT Filler Breather & 056 Mount Cutout | 120 | 32 |
| RVPT-4 | ECONO Vertical Reservoir Cover Plate with 1/2" NPT Filler Breather & 056 Mount Cutout & 1/2" NPT Connector | 120 | 32 |
| RVS05-1 | Vertical Reservoir, 5 Gallon Capacity, Series 1 | 121 | 32 |
| RVS10-2 | Vertical Reservoir, 10 Gallon Capacity, Series 2 | 121 | 32 |
| RVS10A-1 | Vertical Reservoir, 10 Gallon Capacity, Series 1 | 121 | 32 |
| RVS10B-2 | Vertical Reservoir, 10 Gallon Capacity, Series 2 | 121 | 32 |
| RVS1-T-1 | Vertical Reservoir Cover Plate, Series 1, Blank | 123 | 32 |
| RVS1-T-2 | Vertical Reservoir Cover Plate, Series 1 with Filler Breather Cutout | 123 | 32 |
| RVS1-T-3/A | Vertical Reservoir Cover Plate, Series 1 with Filler Breather Cutout and 056A Mount Cutout | 123 | 32 |
| RVS1-T-3/B | Vertical Reservoir Cover Plate, Series 1 with Filler Breather Cutout and 056B Mount Cutout | 123 | 32 |
| RVS1-T-4/C | Vertical Reservoir Cover Plate, Series 1 with Filler Breather Cutout and 182A Mount Cutout | 121 | 32 |
| RVS20-2 | Vertical Reservoir, 20 Gallon Capacity, Series 2 | 121 | 32 |
| RVS20-3 | Vertical Reservoir, 20 Gallon Capacity, Series 3 | 121 | 32 |
| RVS2-T-1 | Vertical Reservoir Cover Plate, Series 2, Blank | 123 | 32 |
| RVS2-T-2 | Vertical Reservoir Cover Plate, Series 2 with Filler Breather Cutout | 123 | 32 |
| RVS2-T-3/A | Vertical Reservoir Cover Plate, Series 2 with Filler Breather Cutout and 056A Mount Cutout | 123 | 32 |
| RVS2-T-3/B | Vertical Reservoir Cover Plate, Series 2 with Filler Breather Cutout and 056B Mount Cutout | 123 | 32 |
| RVS2-T-4/C | Vertical Reservoir Cover Plate, Series 2 with Filler Breather Cutout and 182A Mount Cutout | 123 | 32 |
| RVS2-T-4/D | Vertical Reservoir Cover Plate, Series 2 with Filler Breather Cutout and 182B Mount Cutout | 123 | 32 |
| RVS30-2 | Vertical Reservoir, 30 Gallon Capacity, Series 2 | 121 | 32 |
| RVS30-3 | Vertical Reservoir, 30 Gallon Capacity, Series 3 | 121 | 32 |
| RVS3-T-1 | Vertical Reservoir Cover Plate, Series 3, Blank | 123 | 32 |
| RVS3-T-2 | Vertical Reservoir Cover Plate, Series 3 with Filler Breather Cutout | 123 | 32 |
| RVS3-T-3/A | Vertical Reservoir Cover Plate, Series 3 with Filler Breather Cutout and 056A Mount Cutout | 123 | 32 |
| RVS3-T-3/B | Vertical Reservoir Cover Plate, Series 3 with Filler Breather Cutout and 056B Mount Cutout | 123 | 32 |
| RVS3-T-4/C | Vertical Reservoir Cover Plate, Series 3 with Filler Breather Cutout and 182A Mount Cutout | 123 | 32 |
| RVS3-T-4/D | Vertical Reservoir Cover Plate, Series 3 with Filler Breather Cutout and 182B Mount Cutout | 123 | 32 |
| RVS40-3 | Vertical Reservoir, 40 Gallon Capacity, Series 3 | 121 | 32 |
| RV-T10A-15 | T-10A Valve Cartridge for D03 Hi Flow Manifolds and All Subplates, 50 - 1500 psi | 197 | 25 |
| RV-T10A-30 | T-10A Valve Cartridge for D03 Hi Flow Manifolds and All Subplates, 1500 - 3000 psi | 197 | 25 |
| RV-T3A-08 | T-3A Valve Cartridge for D05 Std Flow, D05 Hi Flow & D08 Manifolds, 25 - 800 psi | 197 | 25 |
| RV-T3A-15 | T-3A Valve Cartridge for D05 Std Flow, D05 Hi Flow & D08 Manifolds, 50 - 1500 psi | 197 | 25 |
| RV-T3A-30 | T-3A Valve Cartridge for D05 Std Flow, D05 Hi Flow & D08 Manifolds, 100 - 3000 psi | 197 | 25 |
| S056xx100M | Steel NEMA 056 Motor Mount to Metric 100mm Pump | 33 | 8 |
| S056xx100MV | Steel NEMA 056 Vertical Motor Mount to Metric 100mm Pump | 36 | 9 |
| S056xx125M | Steel NEMA 056 Motor Mount to Metric 125mm Pump | 33 | 8 |
| S056xx125MV | Steel NEMA 056 Vertical Motor Mount to Metric 125mm Pump | 36 | 9 |
| S056xx2A | Steel NEMA 056 Motor Mount to SAE A Pump | 33 | 8 |
| S056xx2AA | Steel NEMA 056 Motor Mount to SAE 2AA Pump | 33 | 8 |
| S056xx2AAV | Steel NEMA 056 Vertical Motor Mount to SAE 2AA Pump | 36 | 9 |
| S056xx2AV | Steel NEMA 056 Vertical Motor Mount to SAE A Pump | 36 | 9 |
| S056xx2B | Steel NEMA 056 Motor Mount to SAE B Pump | 33 | 8 |
| S056xx2BV | Steel NEMA 056 Vertical Motor Mount to SAE B Pump | 36 | 9 |
| S056xx2C | Steel NEMA 056 Motor Mount to SAE C Pump | 33 | 8 |
| S056xx2CV | Steel NEMA 056 Vertical Motor Mount to SAE C Pump | 36 | 9 |
| S056xx4F | Steel NEMA 056 Motor Mount to USA4F17 Pump | 33 | 8 |
| S056xx4FV | Steel NEMA 056 Vertical Motor Mount to USA4F17 Pump | 36 | 9 |
| S056xx63M | Steel NEMA 056 Motor Mount to Metric 63mm Pump | 33 | 8 |
| S056xx63MS | Steel NEMA 056 Motor Mount to Metric 63mm Special Pump | 33 | 8 |
| S056xx63MSV | Steel NEMA 056 Vertical Motor Mount to Metric 63mm Special Pump | 36 | 9 |
| S056xx63MV | Steel NEMA 056 Vertical Motor Mount to Metric 63mm Pump | 36 | 9 |
| S056xx80M | Steel NEMA 056 Motor Mount to Metric 80mm Pump | 33 | 8 |
| S056xx80MS | Steel NEMA 056 Motor Mount to Metric 80mm Special Pump | 33 | 8 |
| S056xx80MSV | Steel NEMA 056 Vertical Motor Mount to Metric 80mm Special Pump | 36 | 9 |
| S056xx80MV | Steel NEMA 056 Vertical Motor Mount to Metric 80mm Pump | 36 | 9 |
| S056xxxx45 | Steel NEMA 056 Motor Mount w/pump holes rotated 45 degrees | | 10 |
| S056xxxxM8 | Steel NEMA 056 Motor Mount w/4 additional holes on motor end to allow rotating mount +/-45 degrees | | 10 |
| S056xxxxVV | Steel NEMA 056 Special Vertical Motor Mount for WorldWide Corp Motor | | 10 |
| S182xx100M | Steel NEMA 182 Motor Mount to Metric 100mm Pump | 34 | 8 |
| S182xx100MV | Steel NEMA 182 Vertical Motor Mount to Metric 100mm Pump | 37 | 9 |
| S182xx125M | Steel NEMA 182 Motor Mount to Metric 125mm Pump | 34 | 8 |
| S182xx125MV | Steel NEMA 182 Vertical Motor Mount to Metric 125mm Pump | 37 | 9 |
| S182xx160M | Steel NEMA 182 Motor Mount to Metric 160mm Pump | 34 | 8 |



What is it, Where is it Index

| Part Number | Description | Catalog Page | Price Page |
|-------------|--|--------------|------------|
| S182xx160MV | Steel NEMA 182 Vertical Motor Mount to Metric 160mm Pump | 37 | 9 |
| S182xx180M | Steel NEMA 182 Motor Mount to Metric 180mm Pump | 34 | 8 |
| S182xx180MV | Steel NEMA 182 Vertical Motor Mount to Metric 180mm Pump | 37 | 9 |
| S182xx2A | Steel NEMA 182 Motor Mount to SAE A Pump | 34 | 8 |
| S182xx2AA | Steel NEMA 182 Motor Mount to SAE 2AA Pump | 34 | 8 |
| S182xx2AAV | Steel NEMA 182 Vertical Motor Mount to SAE 2AA Pump | 37 | 9 |
| S182xx2AV | Steel NEMA 182 Vertical Motor Mount to SAE A Pump | 37 | 9 |
| S182xx2B | Steel NEMA 182 Motor Mount to SAE B Pump | 34 | 8 |
| S182xx2BV | Steel NEMA 182 Vertical Motor Mount to SAE B Pump | 37 | 9 |
| S182xx2C | Steel NEMA 182 Motor Mount to SAE C Pump | 34 | 8 |
| S182xx2CV | Steel NEMA 182 Vertical Motor Mount to SAE C Pump | 37 | 9 |
| S182xx2D | Steel NEMA 182 Motor Mount to SAE D Pump | 34 | 8 |
| S182xx2DV | Steel NEMA 182 Vertical Motor Mount to SAE D Pump | 37 | 9 |
| S182xx4F | Steel NEMA 182 Motor Mount to USA4F17 Pump | 34 | 8 |
| S182xx4FV | Steel NEMA 182 Vertical Motor Mount to USA4F17 Pump | 37 | 9 |
| S182xx63M | Steel NEMA 182 Motor Mount to Metric 63mm Pump | | 8 |
| S182xx63MS | Steel NEMA 182 Motor Mount to Metric 63mm Special Pump | | 8 |
| S182xx63MSV | Steel NEMA 182 Vertical Motor Mount to Metric 63mm Special Pump | 37 | 9 |
| S182xx63MV | Steel NEMA 182 Vertical Motor Mount to Metric 63mm Pump | 37 | 9 |
| S182xx80M | Steel NEMA 182 Motor Mount to Metric 80mm Pump | | 8 |
| S182xx80MS | Steel NEMA 182 Motor Mount to Metric 80mm Special Pump | | 8 |
| S182xx80MSV | Steel NEMA 182 Vertical Motor Mount to Metric 80mm Special Pump | 37 | 9 |
| S182xx80MV | Steel NEMA 182 Vertical Motor Mount to Metric 80mm Pump | 37 | 9 |
| S182xxPVR50 | Steel NEMA 182 Motor Mount to PVR50 Pump | | 8 |
| S182xxxx45 | Steel NEMA 182 Motor Mount w/pump holes rotated 45 degrees | | 10 |
| S182xxxxM8 | Steel NEMA 182 Motor Mount w/4 additional holes on motor end to allow rotating mount +/-45 degrees | | 10 |
| S182xxxxVV | Steel NEMA 182 Special Vertical Motor Mount for WorldWide Corp Motor | | 10 |
| S284xx100M | Steel NEMA 284 Motor Mount to Metric 100mm Pump | 34 | 8 |
| S284xx100MV | Steel NEMA 284 Vertical Motor Mount to Metric 100mm Pump | 37 | 9 |
| S284xx125M | Steel NEMA 284 Motor Mount to Metric 125mm Pump | 34 | 8 |
| S284xx125MV | Steel NEMA 284 Vertical Motor Mount to Metric 125mm Pump | 37 | 9 |
| S284xx160M | Steel NEMA 284 Motor Mount to Metric 160mm Pump | 34 | 8 |
| S284xx160MV | Steel NEMA 284 Vertical Motor Mount to Metric 160mm Pump | 37 | 9 |
| S284xx180M | Steel NEMA 284 Motor Mount to Metric 180mm Pump | 34 | 8 |
| S284xx180MV | Steel NEMA 284 Vertical Motor Mount to Metric 180mm Pump | 37 | 9 |
| S284xx200M | Steel NEMA 284 Motor Mount to Metric 200mm Pump | 34 | 8 |
| S284xx200MV | Steel NEMA 284 Vertical Motor Mount to Metric 200mm Pump | 37 | 9 |
| S284xx250M | Steel NEMA 284 Motor Mount to Metric 250mm Pump | 34 | 8 |
| S284xx250MV | Steel NEMA 284 Vertical Motor Mount to Metric 250mm Pump | 37 | 9 |
| S284xx2A | Steel NEMA 284 Motor Mount to SAE A Pump | 34 | 8 |
| S284xx2AV | Steel NEMA 284 Vertical Motor Mount to SAE A Pump | 37 | 9 |
| S284xx2B | Steel NEMA 284 Motor Mount to SAE B Pump | 34 | 8 |
| S284xx2BV | Steel NEMA 284 Vertical Motor Mount to SAE B Pump | 37 | 9 |
| S284xx2C | Steel NEMA 284 Motor Mount to SAE C Pump | 34 | 8 |
| S284xx2CV | Steel NEMA 284 Vertical Motor Mount to SAE C Pump | 37 | 9 |
| S284xx2D | Steel NEMA 284 Motor Mount to SAE D Pump | 34 | 8 |
| S284xx2DV | Steel NEMA 284 Vertical Motor Mount to SAE D Pump | 37 | 9 |
| S284xx2E | Steel NEMA 284 Motor Mount to SAE E Pump | 34 | 8 |
| S284xx2EV | Steel NEMA 284 Vertical Motor Mount to SAE E Pump | 37 | 9 |
| S284xx2F | Steel NEMA 284 Motor Mount to SAE F Pump | 34 | 8 |
| S284xx2FV | Steel NEMA 284 Vertical Motor Mount to SAE F Pump | 37 | 9 |
| S284xx63M | Steel NEMA 284 Motor Mount to Metric 63mm Pump | | 8 |
| S284xx63MS | Steel NEMA 284 Vertical Motor Mount to Metric 63mm Pump | | 8 |
| S284xx63MSV | Steel NEMA 284 Motor Mount to Metric 63mm Special Pump | | 9 |
| S284xx63MV | Steel NEMA 284 Vertical Motor Mount to Metric 63mm Special Pump | | 9 |
| S284xx80M | Steel NEMA 284 Motor Mount to Metric 80mm Pump | | 8 |
| S284xx80MS | Steel NEMA 284 Vertical Motor Mount to Metric 80mm Pump | | 8 |
| S284xx80MSV | Steel NEMA 284 Motor Mount to Metric 80mm Special Pump | | 9 |
| S284xx80MV | Steel NEMA 284 Vertical Motor Mount to Metric 80mm Special Pump | | 9 |
| S284xxPVR50 | Steel NEMA 284 Motor Mount to PVR50 Pump | | 8 |
| S284xxxx45 | Steel NEMA 284 Motor Mount w/pump holes rotated 45 degrees | | 10 |
| S284xxxxM8 | Steel NEMA 284 Motor Mount w/4 additional holes on motor end to allow rotating mount +/-45 degrees | | 10 |
| S324xx100M | Steel NEMA 324 Motor Mount to Metric 100mm Pump | 35 | 8 |
| S324xx100MV | Steel NEMA 324 Vertical Motor Mount to Metric 100mm Pump | 38 | 9 |
| S324xx125M | Steel NEMA 324 Motor Mount to Metric 125mm Pump | | 8 |

What is it, Where is it Index



| Part Number | Description | Catalog Page | Price Page |
|-------------|--|--------------|------------|
| S324xx125MV | Steel NEMA 324 Vertical Motor Mount to Metric 125mm Pump | 38 | 9 |
| S324xx160M | Steel NEMA 324 Motor Mount to Metric 160mm Pump | 35 | 8 |
| S324xx160MV | Steel NEMA 324 Vertical Motor Mount to Metric 160mm Pump | 38 | 9 |
| S324xx180M | Steel NEMA 324 Motor Mount to Metric 180mm Pump | 35 | 8 |
| S324xx180MV | Steel NEMA 324 Vertical Motor Mount to Metric 180mm Pump | 38 | 9 |
| S324xx200M | Steel NEMA 324 Motor Mount to Metric 200mm Pump | 35 | 8 |
| S324xx200MV | Steel NEMA 324 Vertical Motor Mount to Metric 200mm Pump | 38 | 9 |
| S324xx250M | Steel NEMA 324 Motor Mount to Metric 250mm Pump | 35 | 8 |
| S324xx250MV | Steel NEMA 324 Vertical Motor Mount to Metric 250mm Pump | 38 | 9 |
| S324xx2A | Steel NEMA 324 Motor Mount to SAE A Pump | 35 | 8 |
| S324xx2AV | Steel NEMA 324 Vertical Motor Mount to SAE A Pump | 38 | 9 |
| S324xx2B | Steel NEMA 324 Motor Mount to SAE B Pump | 35 | 8 |
| S324xx2BV | Steel NEMA 324 Vertical Motor Mount to SAE B Pump | 38 | 9 |
| S324xx2C | Steel NEMA 324 Motor Mount to SAE C Pump | 35 | 8 |
| S324xx2CV | Steel NEMA 324 Vertical Motor Mount to SAE C Pump | 38 | 9 |
| S324xx2D | Steel NEMA 324 Motor Mount to SAE D Pump | 35 | 8 |
| S324xx2DV | Steel NEMA 324 Vertical Motor Mount to SAE D Pump | 38 | 9 |
| S324xx2E | Steel NEMA 324 Motor Mount to SAE E Pump | 35 | 8 |
| S324xx2EV | Steel NEMA 324 Vertical Motor Mount to SAE E Pump | 38 | 9 |
| S324xx2F | Steel NEMA 324 Motor Mount to SAE F Pump | 35 | 8 |
| S324xx2FV | Steel NEMA 324 Vertical Motor Mount to SAE F Pump | 38 | 9 |
| S324xx63M | Steel NEMA 324 Motor Mount to Metric 63mm Pump | | 8 |
| S324xx63MS | Steel NEMA 324 Vertical Motor Mount to Metric 63mm Pump | | 8 |
| S324xx63MSV | Steel NEMA 324 Motor Mount to Metric 63mm Special Pump | | 9 |
| S324xx63MV | Steel NEMA 324 Vertical Motor Mount to Metric 63mm Special Pump | | 9 |
| S324xx80M | Steel NEMA 324 Motor Mount to Metric 80mm Pump | | 8 |
| S324xx80MS | Steel NEMA 324 Vertical Motor Mount to Metric 80mm Pump | | 8 |
| S324xx80MSV | Steel NEMA 324 Motor Mount to Metric 80mm Special Pump | | 9 |
| S324xx80MV | Steel NEMA 324 Vertical Motor Mount to Metric 80mm Special Pump | | 9 |
| S324xxPVR50 | Steel NEMA 324 Motor Mount to PVR50 Pump | | 8 |
| S324xxxxx45 | Steel NEMA 324 Motor Mount w/pump holes rotated 45 degrees | | 10 |
| S324xxxxxM8 | Steel NEMA 324 Motor Mount w/4 additional holes on motor end to allow rotating mount +/-45 degrees | | 10 |
| S444xx100M | Steel NEMA 444 Motor Mount to Metric 100mm Pump | | 8 |
| S444xx100MV | Steel NEMA 444 Vertical Motor Mount to Metric 100mm Pump | 38 | 9 |
| S444xx125M | Steel NEMA 444 Motor Mount to Metric 125mm Pump | 35 | 8 |
| S444xx125MV | Steel NEMA 444 Vertical Motor Mount to Metric 125mm Pump | 38 | 9 |
| S444xx160M | Steel NEMA 444 Motor Mount to Metric 160mm Pump | 35 | 8 |
| S444xx160MV | Steel NEMA 444 Vertical Motor Mount to Metric 160mm Pump | 38 | 9 |
| S444xx180M | Steel NEMA 444 Motor Mount to Metric 180mm Pump | 35 | 8 |
| S444xx180MV | Steel NEMA 444 Vertical Motor Mount to Metric 180mm Pump | 38 | 9 |
| S444xx200M | Steel NEMA 444 Motor Mount to Metric 200mm Pump | 35 | 8 |
| S444xx200MV | Steel NEMA 444 Vertical Motor Mount to Metric 200mm Pump | 38 | 9 |
| S444xx250M | Steel NEMA 444 Motor Mount to Metric 250mm Pump | 35 | 8 |
| S444xx250MV | Steel NEMA 444 Vertical Motor Mount to Metric 250mm Pump | 38 | 9 |
| S444xx2A | Steel NEMA 444 Motor Mount to SAE A Pump | 35 | 8 |
| S444xx2AV | Steel NEMA 444 Vertical Motor Mount to SAE A Pump | 38 | 9 |
| S444xx2B | Steel NEMA 444 Motor Mount to SAE B Pump | 35 | 8 |
| S444xx2BV | Steel NEMA 444 Vertical Motor Mount to SAE B Pump | 38 | 9 |
| S444xx2C | Steel NEMA 444 Motor Mount to SAE C Pump | 35 | 8 |
| S444xx2CV | Steel NEMA 444 Vertical Motor Mount to SAE C Pump | 38 | 9 |
| S444xx2D | Steel NEMA 444 Motor Mount to SAE D Pump | 35 | 8 |
| S444xx2DV | Steel NEMA 444 Vertical Motor Mount to SAE D Pump | 38 | 9 |
| S444xx2E | Steel NEMA 444 Motor Mount to SAE E Pump | 35 | 8 |
| S444xx2EV | Steel NEMA 444 Vertical Motor Mount to SAE E Pump | 38 | 9 |
| S444xx2F | Steel NEMA 444 Motor Mount to SAE F Pump | 35 | 8 |
| S444xx2FV | Steel NEMA 444 Vertical Motor Mount to SAE F Pump | 38 | 9 |
| S444xx63M | Steel NEMA 444 Mount to Metric 63mm Pump | | 8 |
| S444xx63MS | Steel NEMA 444 Mount to Metric 63mm Special Pump | | 8 |
| S444xx63MSV | Steel NEMA 444 Vertical Mount to Metric 63mm Pump | | 9 |
| S444xx63MV | Steel NEMA 444 Vertical Mount to Metric 63mm Special Pump | | 9 |
| S444xx80M | Steel NEMA 444 Mount to Metric 80mm Pump | | 8 |
| S444xx80MS | Steel NEMA 444 Mount to Metric 80mm Special Pump | | 8 |
| S444xx80MSV | Steel NEMA 444 Vertical Mount to Metric 80mm Pump | | 9 |
| S444xx80MV | Steel NEMA 444 Vertical Mount to Metric 80mm Special Pump | | 9 |



What is it, Where is it Index

| Part Number | Description | Catalog Page | Price Page |
|---------------------|--|--------------|------------|
| S444xxPVR50 | Steel NEMA 444 Motor Mount to PVR50 Pump | | 8 |
| S444xxxxx45 | Steel NEMA 444 Motor Mount w/pump holes rotated 45 degrees | | 10 |
| S444xxxxxM8 | Steel NEMA 444 Motor Mount w/4 additional holes on motor end to allow rotating mount +/-45 degrees | | 10 |
| SE575xx100M | Steel 5.75" Pilot Engine Mount to Metric 100mm Pump | 39 | 8 |
| SE575xx2A | Steel 5.75" Pilot Engine Mount to SAE A Pump | 39 | 8 |
| SE575xx2AA | Steel 5.75" Pilot Engine Mount to SAE 2AA Pump | 39 | 8 |
| SE575xx2B | Steel 5.75" Pilot Engine Mount to SAE 2B Pump | 39 | 8 |
| SE575xx4F | Steel 5.75" Pilot Engine Mount to USA4F17 Pump | 39 | 8 |
| SE575xx63M | Steel 5.75" Pilot Engine Mount to Metric 63mm Pump | 39 | 8 |
| SE575xx63MS | Steel 5.75" Pilot Engine Mount to Metric 63mm Special Pump | 39 | 8 |
| SE575xx80M | Steel 5.75" Pilot Engine Mount to Metric 80mm Pump | 39 | 8 |
| SE575xx80MS | Steel 5.75" Pilot Engine Mount to Metric 80mm Special Pump | 39 | 8 |
| SE644xx100M | Steel 6.44" Pilot Engine Mount to Metric 100mm Pump | 40 | 8 |
| SE644xx125M | Steel 6.44" Pilot Engine Mount to Metric 125mm Pump | 40 | 8 |
| SE644xx160M | Steel 6.44" Pilot Engine Mount to Metric 160mm Pump | 40 | 8 |
| SE644xx180M | Steel 6.44" Pilot Engine Mount to Metric 180mm Pump | 40 | 8 |
| SE644xx2A | Steel 6.44" Pilot Engine Mount to SAE A Pump | 40 | 8 |
| SE644xx2AA | Steel 6.44" Pilot Engine Mount to SAE 2AA Pump | 40 | 8 |
| SE644xx2B | Steel 6.44" Pilot Engine Mount to SAE B Pump | 40 | 8 |
| SE644xx2C | Steel 6.44" Pilot Engine Mount to SAE C Pump | 40 | 8 |
| SE644xx2D | Steel 6.44" Pilot Engine Mount to SAE D Pump | 40 | 8 |
| SE644xx4F | Steel 6.44" Pilot Engine Mount to SAE USA4F17 Pump | 40 | 8 |
| SE644xx63M | Steel 6.44" Pilot Engine Mount to Metric 63mm Pump | 40 | 8 |
| SE644xx63MS | Steel 6.44" Pilot Engine Mount to Metric 63mm Special Pump | 40 | 8 |
| SE644xx80M | Steel 6.44" Pilot Engine Mount to Metric 80mm Pump | 40 | 8 |
| SE644xx80MS | Steel 6.44" Pilot Engine Mount to Metric 80mm Special Pump | 40 | 8 |
| SE700xx100M | Steel 7.00" Pilot Engine Mount to Metric 100mm Pump | 40 | 8 |
| SE700xx125M | Steel 7.00" Pilot Engine Mount to Metric 125mm Pump | 40 | 8 |
| SE700xx160M | Steel 7.00" Pilot Engine Mount to Metric 160mm Pump | 40 | 8 |
| SE700xx180M | Steel 7.00" Pilot Engine Mount to Metric 180mm Pump | 40 | 8 |
| SE700xx2A | Steel 7.00" Pilot Engine Mount to SAE A Pump | 40 | 8 |
| SE700xx2AA | Steel 7.00" Pilot Engine Mount to SAE 2AA Pump | 40 | 8 |
| SE700xx2B | Steel 7.00" Pilot Engine Mount to SAE B Pump | 40 | 8 |
| SE700xx2C | Steel 7.00" Pilot Engine Mount to SAE C Pump | 40 | 8 |
| SE700xx2D | Steel 7.00" Pilot Engine Mount to SAE D Pump | 40 | 8 |
| SE700xx4F | Steel 7.00" Pilot Engine Mount to SAE USA4F17 Pump | 40 | 8 |
| SE787xx63M | Steel 7.87" Pilot Engine Mount to Metric 63mm Pump | | 8 |
| SE787xx63MS | Steel 7.87" Pilot Engine Mount to Metric 63mm Special Pump | | 8 |
| SE787xx80M | Steel 7.87" Pilot Engine Mount to Metric 80mm Pump | | 8 |
| SE787xx80MS | Steel 7.87" Pilot Engine Mount to Metric 80mm Special Pump | | 8 |
| SE787xx100M | Steel 7.87" Pilot Engine Mount to Metric 100mm Pump | 41 | 8 |
| SE787xx125M | Steel 7.87" Pilot Engine Mount to Metric 125mm Pump | 41 | 8 |
| SE787xx160M | Steel 7.87" Pilot Engine Mount to Metric 160mm Pump | 41 | 8 |
| SE787xx180M | Steel 7.87" Pilot Engine Mount to Metric 180mm Pump | 41 | 8 |
| SE787xx2A | Steel 7.87" Pilot Engine Mount to SAE A Pump | 41 | 8 |
| SE787xx2AA | Steel 7.87" Pilot Engine Mount to SAE 2AA Pump | 41 | 8 |
| SE787xx2B | Steel 7.87" Pilot Engine Mount to SAE B Pump | 41 | 8 |
| SE787xx2C | Steel 7.87" Pilot Engine Mount to SAE C Pump | 41 | 8 |
| SE787xx2D | Steel 7.87" Pilot Engine Mount to SAE D Pump | 41 | 8 |
| SE787xx4F | Steel 7.87" Pilot Engine Mount to SAE USA4F17 Pump | 41 | 8 |
| SE787xx63M | Steel 7.87" Pilot Engine Mount to Metric 63mm Pump | | 8 |
| SE787xx63MS | Steel 7.87" Pilot Engine Mount to Metric 63mm Special Pump | | 8 |
| SE787xx80M | Steel 7.87" Pilot Engine Mount to Metric 80mm Pump | | 8 |
| SE787xx80MS | Steel 7.87" Pilot Engine Mount to Metric 80mm Special Pump | | 8 |
| SFH-B104/00-00-0-00 | Spin-On Filter Head, 1 1/4" BSPT inlet & outlet ports, No By-Pass, No Gauge Port, No Indicators | 158 | 40 |
| SFH-P104/00-00-0-00 | Spin-On Filter Head, 1 1/4" NPT inlet & outlet ports, No By-Pass, No Gauge Port, No Indicators | 158 | 40 |
| SFH-S020/00-00-0-00 | Spin-On Filter Head, #20 SAE inlet & outlet ports, No By-Pass, No Gauge Port, No Indicators | 158 | 40 |
| SLF-008P | Premium Suction Line Flange, 1/2" Pipe | 141 | 37 |
| SLF-008T | Premium Suction Line Flange, 1/2" Tube | 141 | 37 |
| SLF-012P | Premium Suction Line Flange, 3/4" Pipe | 141 | 37 |
| SLF-012T | Premium Suction Line Flange, 3/4" Tube | 141 | 37 |
| SLF-100P | Premium Suction Line Flange, 1" Pipe | 141 | 37 |
| SLF-100T | Premium Suction Line Flange, 1" Tube | 141 | 37 |
| SLF-104P | Premium Suction Line Flange, 1 1/4" Pipe | 141 | 37 |

What is it, Where is it Index



| Part Number | Description | Catalog Page | Price Page |
|----------------|--|--------------|------------|
| SLF-104T | Premium Suction Line Flange, 1 1/4" Tube | 141 | 37 |
| SLF-108P | Premium Suction Line Flange, 1 1/2" Pipe | 141 | 37 |
| SLF-108T | Premium Suction Line Flange, 1 1/2" Tube | 141 | 37 |
| SLF-200P | Premium Suction Line Flange, 2" Pipe | 141 | 37 |
| SLF-200T | Premium Suction Line Flange, 2" Tube | 141 | 37 |
| SLFE-500-000P | Economy Suction Line Flange, 4 1/2" Cutout, Blank | 143 | 37 |
| SLFE-500-006T | Economy Suction Line Flange, 4 1/2" Cutout, 3/8" Tube | 143 | 37 |
| SLFE-500-008P | Economy Suction Line Flange, 4 1/2" Cutout, 1/2" Pipe | 143 | 37 |
| SLFE-500-008T | Economy Suction Line Flange, 4 1/2" Cutout, 1/2" Tube | 143 | 37 |
| SLFE-500-012P | Economy Suction Line Flange, 4 1/2" Cutout, 3/4" Pipe | 143 | 37 |
| SLFE-500-012T | Economy Suction Line Flange, 4 1/2" Cutout, 3/4" Tube | 143 | 37 |
| SLFE-500-100P | Economy Suction Line Flange, 4 1/2" Cutout, 1" Pipe | 143 | 37 |
| SLFE-500-100T | Economy Suction Line Flange, 4 1/2" Cutout, 1" Tube | 143 | 37 |
| SLFE-500-104P | Economy Suction Line Flange, 4 1/2" Cutout, 1 1/4" Pipe | 143 | 37 |
| SLFE-500-104T | Economy Suction Line Flange, 4 1/2" Cutout, 1 1/4" Tube | 143 | 37 |
| SLFE-500-108P | Economy Suction Line Flange, 4 1/2" Cutout, 1 1/2" Pipe | 143 | 37 |
| SLFE-500-108T | Economy Suction Line Flange, 4 1/2" Cutout, 1 1/2" Tube | 143 | 37 |
| SLFE-500-200P | Economy Suction Line Flange, 4 1/2" Cutout, 2" Pipe | 143 | 37 |
| SLFE-700-108P | Economy Suction Line Flange, 6 1/2" Cutout, 1 1/2" Pipe | 143 | 37 |
| SLFE-700-200P | Economy Suction Line Flange, 6 1/2" Cutout, 2" Pipe | 143 | 37 |
| SLFE-700-208P | Economy Suction Line Flange, 6 1/2" Cutout, 2 1/2" Pipe | 143 | 37 |
| SLFE-700-300P | Economy Suction Line Flange, 6 1/2" Cutout, 3" Pipe | 143 | 37 |
| SLLG-03T | Standard Line Liquid Level Gauge, 3" with Temp | 170 | 43 |
| SLLG-03T-C | Standard Line Liquid Level Gauge, 3" with Temp & Protective Cover | 170 | 43 |
| SLLG-05T | Standard Line Liquid Level Gauge, 5" with Temp | 170 | 43 |
| SLLG-05T-C | Standard Line Liquid Level Gauge, 5" with Temp & Protective Cover | 170 | 43 |
| SLLG-10T | Standard Line Liquid Level Gauge, 10" with Temp | 170 | 43 |
| SLLG-10T-C | Standard Line Liquid Level Gauge, 10" with Temp & Protective Cover | 170 | 43 |
| SLSG-100 | Sight Glass Style Liquid Level Gauge | 171 | 43 |
| SP-A03x4-1/DZ | D03 Aluminum Super Saver Down Side Ported Subplate-Size 4 Threads | 78 | 21 |
| SP-A03x4-1/PZ | D03 Aluminum Super Saver Perimeter Ported Subplate-Size 4 Threads | 77 | 21 |
| SP-A03x6-1/BC | D03 Aluminum Bottom Ported Subplate-Size 6 Threads w/C-10-2 Common Cavity | 81 | 21 |
| SP-A03x6-1/BS | D03 Aluminum Bottom Ported Subplate-Size 6 Threads w/T-10A Sun Cavity | 81 | 21 |
| SP-A03x6-1/BZ | D03 Aluminum Bottom Ported Subplate-Size 6 Threads | 81 | 21 |
| SP-A03x6-1/C | D03 Aluminum Side Ported Subplate-Size 6 Threads w/C-10-2 Common Cavity | 81 | 21 |
| SP-A03x6-1/DZ | D03 Aluminum Super Saver Down Side Ported Subplate-Size 6 Threads | 78 | 21 |
| SP-A03x6-1/PZ | D03 Aluminum Super Saver Perimeter Ported Subplate-Size 6 Threads | 77 | 21 |
| SP-A03x6-1/S | D03 Aluminum Side Ported Subplate-Size 6 Threads w/T-10A Sun Cavity | 81 | 21 |
| SP-A03x6-1/Z | D03 Aluminum Side Ported Subplate-Size 6 Threads | 81 | 21 |
| SP-A03x8-1/BC | D03 Aluminum Bottom Ported Subplate-Size 8 Threads w/C-10-2 Common Cavity | 81 | 21 |
| SP-A03x8-1/BS | D03 Aluminum Bottom Ported Subplate-Size 8 Threads w/T-10A Sun Cavity | 81 | 21 |
| SP-A03x8-1/BZ | D03 Aluminum Bottom Ported Subplate-Size 8 Threads | 81 | 21 |
| SP-A03x8-1/C | D03 Aluminum Side Ported Subplate-Size 8 Threads w/C-10-2 Common Cavity | 81 | 21 |
| SP-A03x8-1/S | D03 Aluminum Side Ported Subplate-Size 8 Threads w/T-10A Sun Cavity | 81 | 21 |
| SP-A03x8-1/Z | D03 Aluminum Side Ported Subplate-Size 8 Threads | 81 | 21 |
| SP-A05x6-1/BC | D05 Aluminum Bottom Ported Subplate-Size 6 Threads w/C-10-2 Common Cavity | 82 | 22 |
| SP-A05x6-1/BS | D05 Aluminum Bottom Ported Subplate-Size 6 Threads w/T-10A Sun Cavity | 82 | 22 |
| SP-A05x6-1/BZ | D03 Aluminum Bottom Ported Subplate-Size 6 Threads | 82 | 22 |
| SP-A05x6-1/C | D05 Aluminum Side Ported Subplate-Size 6 Threads w/C-10-2 Common Cavity | 82 | 22 |
| SP-A05x6-1/DZ | D05 Aluminum Super Saver Down Side Ported Subplate-Size 6 Threads | 80 | 21 |
| SP-A05x6-1/PZ | D05 Aluminum Super Saver Perimeter Ported Subplate-Size 6 Threads | 79 | 21 |
| SP-A05x6-1/S | D05 Aluminum Side Ported Subplate-Size 6 Threads w/T-10A Sun Cavity | 82 | 22 |
| SP-A05x6-1/Z | D05 Aluminum Side Ported Subplate-Size 6 Threads | 82 | 22 |
| SP-A05x8-1/BC | D05 Aluminum Bottom Ported Subplate-Size 8 Threads w/C-10-2 Common Cavity | 82 | 22 |
| SP-A05x8-1/BS | D05 Aluminum Bottom Ported Subplate-Size 8 Threads w/T-10A Sun Cavity | 82 | 22 |
| SP-A05x8-1/BZ | D05 Aluminum Bottom Ported Subplate-Size 8 Threads | 82 | 22 |
| SP-A05x8-1/C | D05 Aluminum Side Ported Subplate-Size 8 Threads w/C-10-2 Common Cavity | 82 | 22 |
| SP-A05x8-1/DZ | D05 Aluminum Super Saver Down Side Ported Subplate-Size 8 Threads | 80 | 21 |
| SP-A05x8-1/PZ | D05 Aluminum Super Saver Perimeter Ported Subplate-Size 8 Threads | 79 | 21 |
| SP-A05x8-1/S | D05 Aluminum Side Ported Subplate-Size 8 Threads w/T-10A Sun Cavity | 82 | 22 |
| SP-A05x8-1/Z | D05 Aluminum Side Ported Subplate-Size 8 Threads | 82 | 22 |
| SP-A08x12-1/BC | D08 Aluminum Bottom Ported Subplate-Size 12 Threads w/C-10-2 Common Cavity | 84 | 23 |
| SP-A08x12-1/BS | D08 Aluminum Bottom Ported Subplate-Size 12 Threads w/T-3A Sun Cavity | 84 | 23 |
| SP-A08x12-1/BZ | D08 Aluminum Bottom Ported Subplate-Size 12 Threads | 84 | 23 |
| SP-A08x12-1/C | D08 Aluminum Side Ported Subplate-Size 12 Threads w/C-10-2 Common Cavity | 84 | 23 |



What is it, Where is it Index

| Part Number | Description | Catalog Page | Price Page |
|-----------------|--|--------------|------------|
| SP-A08x12-1/Z | D08 Aluminum Side Ported Subplate-Size 12 Threads | 84 | 23 |
| SP-A08x16-1/BC | D08 Aluminum Bottom Ported Subplate-Size 16 Threads w/C-10-2 Common Cavity | 84 | 23 |
| SP-A08x16-1/BS | D08 Aluminum Bottom Ported Subplate-Size 16 Threads w/T-3A Sun Cavity | 84 | 23 |
| SP-A08x16-1/BZ | D08 Aluminum Bottom Ported Subplate-Size 16 Threads | 84 | 23 |
| SP-A08x16-1/C | D08 Aluminum Side Ported Subplate-Size 16 Threads w/C-10-2 Common Cavity | 84 | 23 |
| SP-A08x16-1/S | D08 Aluminum Side Ported Subplate-Size 16 Threads w/T-3A Sun Cavity | 84 | 23 |
| SP-A08x16-1/Z | D08 Aluminum Side Ported Subplate-Size 16 Threads | 84 | 23 |
| SP-AH05x12-1/BC | D05 Aluminum High Flow Bottom Ported Subplate-Size 12 Threads w/C-10-2 Common Cavity | 83 | 22 |
| SP-AH05x12-1/BS | D05 Aluminum High Flow Bottom Ported Subplate-Size 12 Threads w/T-10A Sun Cavity | 83 | 22 |
| SP-AH05x12-1/BZ | D05 Aluminum High Flow Bottom Ported Subplate-Size 12 Threads | 83 | 22 |
| SP-AH05x12-1/C | D05 Aluminum High Flow Side Ported Subplate-Size 12 Threads w/C-10-2 Common Cavity | 83 | 22 |
| SP-AH05x12-1/S | D05 Aluminum High Flow Side Ported Subplate-Size 12 Threads w/T-10A Sun Cavity | 83 | 22 |
| SP-AH05x12-1/Z | D05 Aluminum High Flow Side Ported Subplate-Size 12 Threads | 83 | 22 |
| SP-S03x4-1/DZ | D03 Steel Super Saver Down Side Ported Subplate-Size 4 Threads | 78 | 21 |
| SP-S03x4-1/PZ | D03 Steel Super Saver Perimeter Ported Subplate-Size 4 Threads | 77 | 21 |
| SP-S03x6-1/BC | D03 Steel Bottom Ported Subplate-Size 6 Threads w/C-10-2 Common Cavity | 81 | 21 |
| SP-S03x6-1/BS | D03 Steel Bottom Ported Subplate-Size 6 Threads w/T-10A Sun Cavity | 81 | 21 |
| SP-S03x6-1/BZ | D03 Steel Bottom Ported Subplate-Size 6 Threads | 81 | 21 |
| SP-S03x6-1/C | D03 Steel Side Ported Subplate-Size 6 Threads w/C-10-2 Common Cavity | 81 | 21 |
| SP-S03x6-1/DZ | D03 Steel Super Saver Down Side Ported Subplate-Size 6 Threads | 78 | 21 |
| SP-S03x6-1/PZ | D03 Steel Super Saver Perimeter Ported Subplate-Size 6 Threads | 77 | 21 |
| SP-S03x6-1/S | D03 Steel Side Ported Subplate-Size 6 Threads w/T-10A Sun Cavity | 81 | 21 |
| SP-S03x6-1/Z | D03 Steel Side Ported Subplate-Size 6 Threads | 81 | 21 |
| SP-S03x8-1/BC | D03 Steel Bottom Ported Subplate-Size 8 Threads w/C-10-2 Common Cavity | 81 | 21 |
| SP-S03x8-1/BS | D03 Steel Bottom Ported Subplate-Size 8 Threads w/T-10A Sun Cavity | 81 | 21 |
| SP-S03x8-1/BZ | D03 Steel Bottom Ported Subplate-Size 8 Threads | 81 | 21 |
| SP-S03x8-1/C | D03 Steel Side Ported Subplate-Size 8 Threads w/C-10-2 Common Cavity | 81 | 21 |
| SP-S03x8-1/S | D03 Steel Side Ported Subplate-Size 8 Threads w/T-10A Sun Cavity | 81 | 21 |
| SP-S03x8-1/Z | D03 Steel Side Ported Subplate-Size 8 Threads | 81 | 21 |
| SP-S05x6-1/BC | D05 Steel Bottom Ported Subplate-Size 6 Threads w/C-10-2 Common Cavity | 82 | 22 |
| SP-S05x6-1/BS | D05 Steel Bottom Ported Subplate-Size 6 Threads w/T-10A Sun Cavity | 82 | 22 |
| SP-S05x6-1/BZ | D03 Steel Bottom Ported Subplate-Size 6 Threads | 82 | 22 |
| SP-S05x6-1/C | D05 Steel Side Ported Subplate-Size 6 Threads w/C-10-2 Common Cavity | 82 | 22 |
| SP-S05x6-1/DZ | D05 Steel Super Saver Down Side Ported Subplate-Size 6 Threads | 80 | 21 |
| SP-S05x6-1/PZ | D05 Steel Super Saver Perimeter Ported Subplate-Size 6 Threads | 79 | 21 |
| SP-S05x6-1/S | D05 Steel Side Ported Subplate-Size 6 Threads w/T-10A Sun Cavity | 82 | 22 |
| SP-S05x6-1/Z | D05 Steel Side Ported Subplate-Size 6 Threads | 82 | 22 |
| SP-S05x8-1/BC | D05 Steel Bottom Ported Subplate-Size 8 Threads w/C-10-2 Common Cavity | 82 | 22 |
| SP-S05x8-1/BS | D05 Steel Bottom Ported Subplate-Size 8 Threads w/T-10A Sun Cavity | 82 | 22 |
| SP-S05x8-1/BZ | D05 Steel Bottom Ported Subplate-Size 8 Threads | 82 | 22 |
| SP-S05x8-1/C | D05 Steel Side Ported Subplate-Size 8 Threads w/C-10-2 Common Cavity | 82 | 22 |
| SP-S05x8-1/DZ | D05 Steel Super Saver Down Side Ported Subplate-Size 8 Threads | 80 | 21 |
| SP-S05x8-1/PZ | D05 Steel Super Saver Perimeter Ported Subplate-Size 8 Threads | 79 | 21 |
| SP-S05x8-1/S | D05 Steel Side Ported Subplate-Size 8 Threads w/T-10A Sun Cavity | 82 | 22 |
| SP-S05x8-1/Z | D05 Steel Side Ported Subplate-Size 8 Threads | 82 | 22 |
| SP-S08x12-1/BC | D08 Steel Bottom Ported Subplate-Size 12 Threads w/C-10-2 Common Cavity | 84 | 23 |
| SP-S08x12-1/BS | D08 Steel Bottom Ported Subplate-Size 12 Threads w/T-3A Sun Cavity | 84 | 23 |
| SP-S08x12-1/BZ | D05 Aluminum Bottom Ported Subplate-Size 8 Threads | 84 | 23 |
| SP-S08x12-1/C | D05 Aluminum Side Ported Subplate-Size 8 Threads w/C-10-2 Common Cavity | 84 | 23 |
| SP-S08x12-1/S | D05 Aluminum Side Ported Subplate-Size 6 Threads w/T-10A Sun Cavity | 84 | 23 |
| SP-S08x12-1/Z | D05 Aluminum Side Ported Subplate-Size 6 Threads | 84 | 23 |
| SP-S08x16-1/BC | D05 Aluminum Bottom Ported Subplate-Size 8 Threads w/C-10-2 Common Cavity | 84 | 23 |
| SP-S08x16-1/BS | D05 Aluminum Bottom Ported Subplate-Size 8 Threads w/T-10A Sun Cavity | 84 | 23 |
| SP-S08x16-1/BZ | D05 Aluminum Bottom Ported Subplate-Size 8 Threads | 84 | 23 |
| SP-S08x16-1/C | D05 Aluminum Side Ported Subplate-Size 8 Threads w/C-10-2 Common Cavity | 84 | 23 |
| SP-S08x16-1/S | D05 Aluminum Side Ported Subplate-Size 8 Threads w/T-10A Sun Cavity | 84 | 23 |
| SP-S08x16-1/Z | D05 Aluminum Side Ported Subplate-Size 8 Threads | 84 | 23 |
| SP-SH05x12-1/BC | D08 Aluminum Bottom Ported Subplate-Size 12 Threads w/C-10-2 Common Cavity | 84 | 22 |
| SP-SH05x12-1/BS | D08 Aluminum Bottom Ported Subplate-Size 12 Threads w/T-3A Sun Cavity | 84 | 22 |
| SP-SH05x12-1/BZ | D08 Aluminum Bottom Ported Subplate-Size 12 Threads | 84 | 22 |
| SP-SH05x12-1/C | D08 Aluminum Side Ported Subplate-Size 12 Threads w/C-10-2 Common Cavity | 84 | 22 |
| SP-SH05x12-1/S | D08 Aluminum Side Ported Subplate-Size 12 Threads w/T-3A Sun Cavity | 84 | 22 |

What is it, Where is it Index



| Part Number | Description | Catalog Page | Price Page |
|---------------------|---|--------------|------------|
| SP-SH05x12-1/2 | D08 Aluminum Side Ported Subplate-Size 12 Threads | 84 | 22 |
| SS-003P006-1-0 | Suction Strainer, Internally Mounted, 3GPM, 100 Mesh, 3/8" NPT Outlet Port, No By-Pass | 155 | 39 |
| SS-005P008-1-* | Suction Strainer, Internally Mounted, 5GPM, 100 Mesh, 3/8" NPT Outlet Port, with By-Pass | 155 | 39 |
| SS-005P008-1-0 | Suction Strainer, Internally Mounted, 5GPM, 100 Mesh, 1/2" NPT Outlet Port, No By-Pass | 155 | 39 |
| SS-008P012-*0 | Suction Strainer, Internally Mounted, 8GPM, 100 Mesh, 3/4" NPT Outlet Port, No By-Pass | 155 | 39 |
| SS-008P012/P104-*0 | Suction Strainer, 1 1/4" NPT Externally Mounted, 8GPM, 100 Mesh, 3/4" NPT Outlet Port, with By-Pass | 156 | 39 |
| SS-008P012/P104-*0 | Suction Strainer, 1 1/4" NPT Externally Mounted, 8GPM, 100 Mesh, 3/4" NPT Outlet Port, No By-Pass | 156 | 39 |
| SS-014P100/P300-*0 | Suction Strainer, Internally Mounted, 8GPM, 100 Mesh, 3/4" NPT Outlet Port, with By-Pass | 155 | 39 |
| SS-010P100-*0 | Suction Strainer, Internally Mounted, 10GPM, 100 Mesh, 1" NPT Outlet Port, No By-Pass | 155 | 39 |
| SS-010P100-1-* | Suction Strainer, Internally Mounted, 10GPM, 100 Mesh, 1" NPT Outlet Port, with By-Pass | 155 | 39 |
| SS-014P100/P108-*0 | Suction Strainer, 1 1/2" NPT Externally Mounted, 14GPM, 100 Mesh, 1" NPT Outlet Port, with By-Pass | 156 | 39 |
| SS-014P100/P108-*0 | Suction Strainer, 1 1/2" NPT Externally Mounted, 14GPM, 100 Mesh, 1" NPT Outlet Port, No By-Pass | 156 | 39 |
| SS-014P100/P300-*0 | Suction Strainer, 3" NPT Externally Mounted, 14GPM, 100 Mesh, 1" NPT Outlet Port, with By-Pass | 156 | 39 |
| SS-014P100/P300-*0 | Suction Strainer, 3" NPT Externally Mounted, 14GPM, 100 Mesh, 1" NPT Outlet Port, No By-Pass | 156 | 39 |
| SS-014S020/P300-*0 | Suction Strainer, 3" NPT Externally Mounted, 14GPM, 100 Mesh, #20 SAE Outlet Port, with By-Pass | 156 | 39 |
| SS-014S020/P300-*0 | Suction Strainer, 3" NPT Externally Mounted, 14GPM, 100 Mesh, #20 SAE Outlet Port, No By-Pass | 156 | 39 |
| SS-021024/P300-*0 | Suction Strainer, 3" NPT Externally Mounted, 21GPM, 100 Mesh, #24 SAE Outlet Port, with By-Pass | 156 | 39 |
| SS-21S024/P300-*0 | Suction Strainer, 3" NPT Externally Mounted, 21GPM, 100 Mesh, #24 SAE Outlet Port, No By-Pass | 156 | 39 |
| SS-023P104-*0 | Suction Strainer, Internally Mounted, 23GPM, 100 Mesh, 1 1/4" NPT Outlet Port, with By-Pass | 155 | 39 |
| SS-023P104-*0 | Suction Strainer, Internally Mounted, 23GPM, 100 Mesh, 1 1/4" NPT Outlet Port, No By-Pass | 155 | 39 |
| SS-023P104/P200-*0 | Suction Strainer, 2" NPT Externally Mounted, 23GPM, 100 Mesh, 1 1/4" NPT Outlet Port, with By-Pass | 156 | 39 |
| SS-023P104/P200-*0 | Suction Strainer, 2" NPT Externally Mounted, 23GPM, 100 Mesh, 1 1/4" NPT Outlet Port, No By-Pass | 156 | 39 |
| SS023P104/P300-*0 | Suction Strainer, 3" NPT Externally Mounted, 23GPM, 100 Mesh, 1 1/4" NPT Outlet Port, with By-Pass | 156 | 39 |
| SS-023P104/P300-*0 | Suction Strainer, 3" NPT Externally Mounted, 23GPM, 100 Mesh, 1 1/4" NPT Outlet Port, No By-Pass | 156 | 39 |
| SS-032P108-*0 | Suction Strainer, Internally Mounted, 32GPM, 100 Mesh, 1 1/2" NPT Outlet Port, with By-Pass | 155 | 39 |
| SS-023P108-*0 | Suction Strainer, Internally Mounted, 32GPM, 100 Mesh, 1 1/2" NPT Outlet Port, No By-Pass | 155 | 39 |
| SS-032P108/P300-*0 | Suction Strainer, 3" NPT Externally Mounted, 32GPM, 100 Mesh, 1 1/2" NPT Outlet Port, with By-Pass | 156 | 39 |
| SS-032P108/P300-*0 | Suction Strainer, 3" NPT Externally Mounted, 32GPM, 100 Mesh, 1 1/2" NPT Outlet Port, No By-Pass | 156 | 39 |
| SS-053P200-*0 | Suction Strainer, Internally Mounted, 53GPM, 100 Mesh, 2" NPT Outlet Port, with By-Pass | 155 | 39 |
| SS-053P200-*0 | Suction Strainer, Internally Mounted, 53GPM, 100 Mesh, 2" NPT Outlet Port, No By-Pass | 155 | 39 |
| SS-053P200/P300-*0 | Suction Strainer, 3" NPT Externally Mounted, 53GPM, 100 Mesh, 2" NPT Outlet Port, with By-Pass | 156 | 39 |
| SS-053P200/P300-*0 | Suction Strainer, 3" NPT Externally Mounted, 53GPM, 100 Mesh, 2" NPT Outlet Port, No By-Pass | 156 | 39 |
| SS-053P200/P400-*0 | Suction Strainer, 4" NPT Externally Mounted, 53GPM, 100 Mesh, 2" NPT Outlet Port, with By-Pass | 156 | 39 |
| SS-053P200/P400-*0 | Suction Strainer, 4" NPT Externally Mounted, 53GPM, 100 Mesh, 2" NPT Outlet Port, No By-Pass | 156 | 39 |
| SS-075P208-*0 | Suction Strainer, Internally Mounted, 75GPM, 100 Mesh, 2 1/2" NPT Outlet Port, with By-Pass | 155 | 39 |
| SS-075P208-*0 | Suction Strainer, Internally Mounted, 75GPM, 100 Mesh, 2 1/2" NPT Outlet Port, No By-Pass | 155 | 39 |
| SS-075P208/P400-*0 | Suction Strainer, 4" NPT Externally Mounted, 75GPM, 100 Mesh, 2 1/2" NPT Outlet Port, with By-Pass | 156 | 39 |
| SS-075P208/P400-*0 | Suction Strainer, 4" NPT Externally Mounted, 75GPM, 100 Mesh, 2 1/2" NPT Outlet Port, No By-Pass | 156 | 39 |
| SS-116P300-*0 | Suction Strainer, Internally Mounted, 116GPM, 100 Mesh, 3" NPT Outlet Port, with By-Pass | 155 | 39 |
| SS-116P300-*0 | Suction Strainer, Internally Mounted, 116GPM, 100 Mesh, 3" NPT Outlet Port, No By-Pass | 155 | 39 |
| SSFE-003-067 | Spin -On Filter Synthetic Media Element, 3 Micron, 1 1/2-16 UN Mounting Thread, 6.7" Length | 159 | 40 |
| SSFE-003-107 | Spin -On Filter Synthetic Media Element, 3 Micron, 1 1/2-16 UN Mounting Thread, 10.7" Length | 159 | 40 |
| SSFE-010-067 | Spin -On Filter Synthetic Media Element, 10 Micron, 1 1/2-16 UN Mounting Thread, 6.7" Length | 159 | 40 |
| SSFE-010-107 | Spin -On Filter Synthetic Media Element, 10 Micron, 1 1/2-16 UN Mounting Thread, 10.7" Length | 159 | 40 |
| SSFE-025-067 | Spin -On Filter Synthetic Media Element, 25 Micron, 1 1/2-16 UN Mounting Thread, 6.7" Length | 159 | 40 |
| SSFE-025-107 | Spin -On Filter Synthetic Media Element, 25 Micron, 1 1/2-16 UN Mounting Thread, 10.7" Length | 159 | 40 |
| STTE-ASR-003-092-OI | Tank Top Filter Synthetic Media Element for AL S/R Line Series, 3 Micron, 9.19 Length, O/I Flow | 164 | 42 |
| STTE-ASR-003-182-OI | Tank Top Filter Synthetic Media Element for AL S/R Line Series, 3 Micron, 18.19 Length, O/I Flow | 164 | 42 |
| STTE-ASR-010-092-OI | Tank Top Filter Synthetic Media Element for AL S/R Line Series, 10 Micron, 9.19 Length, O/I Flow | 164 | 42 |
| STTE-ASR-010-182-OI | Tank Top Filter Synthetic Media Element for AL S/R Line Series, 10 Micron, 18.19 Length, O/I Flow | 164 | 42 |
| STTE-ITB-03A | Tank Top Filter Synthetic Media Element for Integral Breather Series, 3 Micron | 161 | 41 |
| STTE-ITB-10A | Tank Top Filter Synthetic Media Element for Integral Breather Series, 10 Micron | 161 | 41 |
| STTE-SSR-003-092-OI | Tank Top Filter Synthetic Media Element for SII S/R Line Series, 3 Micron, 9.19" Length, O/I Flow | 165 | 42 |
| STTE-SSR-003-182-OI | Tank Top Filter Synthetic Media Element for SII S/R Line Series, 3 Micron, 18.19" Length, O/I Flow | 165 | 42 |
| STTE-SSR-010-092-OI | Tank Top Filter Synthetic Media Element for SII S/R Line Series, 10 Micron, 9.19" Length, O/I Flow | 165 | 42 |
| STTE-SSR-010-182-OI | Tank Top Filter Synthetic Media Element for SII S/R Line Series, 10 Micron, 18.19" Length, O/I Flow | 165 | 42 |
| TD-014P008-D1 | Tank Diffuser, 14GPM, 1/2" NPT Mounting Threads, 1.3" OD | 157 | 40 |
| TD-014P008-D2 | Tank Diffuser, 14GPM, 1/2" NPT Mounting Threads, 3.2" OD | 157 | 40 |
| TD-025P012-D1 | Tank Diffuser, 25GPM, 3/4" NPT Mounting Threads, 1.7" OD | 157 | 40 |
| TD-025P012-D2 | Tank Diffuser, 25GPM, 3/4" NPT Mounting Threads, 3.2" OD | 157 | 40 |



What is it, Where is it Index

| Part Number | Description | Catalog Page | Price Page |
|---------------------------|---|--------------|------------|
| TD-040P100-D1 | Tank Diffuser, 40GPM, 1" NPT Mounting Threads, 1.9" OD | 157 | 40 |
| TD-040P100-D2 | Tank Diffuser, 40GPM, 1" NPT Mounting Threads, 3.2" OD | 157 | 40 |
| TD-070P104-D1 | Tank Diffuser, 70GPM, 1 1/4" NPT Mounting Threads, 3.2" OD | 157 | 40 |
| TD-095P108-D1 | Tank Diffuser, 95GPM, 1 1/2" NPT Mounting Threads, 3.2" OD | 157 | 40 |
| TD-157P200-D1 | Tank Diffuser, 157GPM, 2" NPT Mounting Threads, 4.2" OD | 157 | 40 |
| TD-224P208-D1 | Tank Diffuser, 224GPM, 2 1/2" NPT Mounting Threads, 4.2" OD | 157 | 40 |
| TTF-ASR-B104/000-**-**-0 | AI Tank Top Filter, S/R Line Series, 1 1/4" BSPT Left Port, No Right Port, By-Pass, Gauge Port, No Check Valve | 163 | 41 |
| TTF-ASR-B104/000-**-**-V | AI Tank Top Filter, S/R Line Series, 1 1/4" BSPT Left Port, No Right Port, By-Pass, Gauge Port, w/Check Valve | 163 | 41 |
| TTF-ASR-B104/000-00-00-0 | AI Tank Top Filter, S/R Line Series, 1 1/4" BSPT Left Port, No Right Port, No By-Pass, No Gauge Port, No Check V | 163 | 41 |
| TTF-ASR-B104/000-00-00-V | AI Tank Top Filter, S/R Line Series, 1 1/4" BSPT Left Port, No Right Port, No By-Pass, No Gauge Port, w/Check V | 163 | 41 |
| TTF-ASR-B104/B104-**-**-0 | AI Tank Top Filter, S/R Line Series, 1 1/4" BSPT Left and Right Ports, By-Pass, Gauge Port Location, No Check Valve | 163 | 41 |
| TTF-ASR-B104/B104-**-**-V | AI Tank Top Filter, S/R Line Series, 1 1/4" BSPT Left and Right Ports, By-Pass, Gauge Port Location, w/Check Valve | 163 | 41 |
| TTF-ASR-B104/B104-00-00-0 | AI Tank Top Filter, S/R Line Series, 1 1/4" BSPT Left and Right Ports, No By-Pass, No Gauge Port, No Check Valve | 163 | 41 |
| TTF-ASR-B104/B104-00-00-V | AI Tank Top Filter, S/R Line Series, 1 1/4" BSPT Left and Right Ports, No By-Pass, No Gauge Port, w/Check Valve | 163 | 41 |
| TTF-ASR-P104/000-**-**-0 | AI Tank Top Filter, S/R Line Series, 1 1/4" NPT Left Port, No Right Port, By-Pass, Gauge Port Location, No Check V | 163 | 41 |
| TTF-ASR-P104/000-**-**-V | AI Tank Top Filter, S/R Line Series, 1 1/4" NPT Left Port, No Right Port, By-Pass, Gauge Port Location, w/Check Valve | 163 | 41 |
| TTF-ASR-P104/000-00-00-0 | AI Tank Top Filter, S/R Line Series, 1 1/4" NPT Left Port, No Right Port, No By-Pass, No Gauge Port, No Check Valve | 163 | 41 |
| TTF-ASR-P104/000-00-00-V | AI Tank Top Filter, S/R Line Series, 1 1/4" NPT Left Port, No Right Port, No By-Pass, No Gauge Port, w/Check Valve | 163 | 41 |
| TTF-ASR-P104/P104-**-**-0 | AI Tank Top Filter, S/R Line Series, 1 1/4" NPT Left and Right Ports, By-Pass, Gauge Port Location, No Check Valve | 163 | 41 |
| TTF-ASR-P104/P104-**-**-V | AI Tank Top Filter, S/R Line Series, 1 1/4" NPT Left and Right Ports, By-Pass, Gauge Port Location, w/Check Valve | 163 | 41 |
| TTF-ASR-P104/P104-00-00-0 | AI Tank Top Filter, S/R Line Series, 1 1/4" NPT Left and Right Ports, No By-Pass, No Gauge Port, No Check Valve | 163 | 41 |
| TTF-ASR-P104/P104-00-00-V | AI Tank Top Filter, S/R Line Series, 1 1/4" NPT Left and Right Ports, No By-Pass, No Gauge Port, w/Check Valve | 163 | 41 |
| TTF-ASR-P108/000-**-**-0 | AI Tank Top Filter, S/R Line Series, 1 1/2" NPT Left Port, No Right Port, By-Pass, Gauge Port Location, No Check V | 163 | 41 |
| TTF-ASR-P108/000-**-**-V | AI Tank Top Filter, S/R Line Series, 1 1/2" NPT Left Port, No Right Port, By-Pass, Gauge Port Location, w/Check Valve | 163 | 41 |
| TTF-ASR-P108/000-00-00-0 | AI Tank Top Filter, S/R Line Series, 1 1/2" NPT Left Port, No Right Port, No By-Pass, No Gauge Port, No Check Valve | 163 | 41 |
| TTF-ASR-P108/000-00-00-V | AI Tank Top Filter, S/R Line Series, 1 1/2" NPT Left Port, No Right Port, No By-Pass, No Gauge Port, w/Check Valve | 163 | 41 |
| TTF-ASR-P108/P104-**-**-0 | AI Tank Top Filter, S/R Line Series, 1 1/2" NPT Left Port, 1 1/4" NPT Right Port, By-Pass, Gauge Port, No Check Valve | 163 | 41 |
| TTF-ASR-P108/P104-**-**-V | AI Tank Top Filter, S/R Line Series, 1 1/2" NPT Left Port, 1 1/4" NPT Right Port, By-Pass, Gauge Port, w/Check Valve | 163 | 41 |
| TTF-ASR-P108/P104-00-00-0 | AI Tank Top Filter, S/R Line Series, 1 1/2" NPT L Port, 1 1/4" NPT R Port, No By-Pass, No Gauge Port, No Check V | 163 | 41 |
| TTF-ASR-P108/P104-00-00-V | AI Tank Top Filter, S/R Line Series, 1 1/2" NPT L Port, 1 1/4" NPT R Port, No By-Pass, No Gauge Port, w/Check V | 163 | 41 |
| TTF-ASR-P108/P108-**-**-0 | AI Tank Top Filter, S/R Line Series, 1 1/2" BSPT Left and Right Ports, By-Pass, Gauge Port Location, No Check Valve | 163 | 41 |
| TTF-ASR-P108/P108-**-**-V | AI Tank Top Filter, S/R Line Series, 1 1/2" BSPT Left and Right Ports, By-Pass, Gauge Port Location, w/Check Valve | 163 | 41 |
| TTF-ASR-P108/P108-00-00-0 | AI Tank Top Filter, S/R Line Series, 1 1/2" BSPT Left and Right Ports, No By-Pass, No Gauge Port, No Check Valve | 163 | 41 |
| TTF-ASR-P108/P108-00-00-V | AI Tank Top Filter, S/R Line Series, 1 1/2" BSPT Left and Right Ports, No By-Pass, No Gauge Port, w/Check Valve | 163 | 41 |
| TTF-ASR-S020/000-**-**-0 | AI Tank Top Filter, S/R Line Series, #20 SAE Left Port, No Right Port, By-Pass, Gauge Port Location, No Check Valve | 163 | 41 |
| TTF-ASR-S020/000-**-**-V | AI Tank Top Filter, S/R Line Series, #20 SAE Left Port, No Right Port, By-Pass, Gauge Port Location, w/Check Valve | 163 | 41 |
| TTF-ASR-S020/000-00-00-0 | AI Tank Top Filter, S/R Line Series, #20 SAE Left Port, No Right Port, No By-Pass, No Gauge Port, No Check Valve | 163 | 41 |
| TTF-ASR-S020/000-00-00-V | AI Tank Top Filter, S/R Line Series, #20 SAE Left Port, No Right Port, No By-Pass, No Gauge Port, w/Check Valve | 163 | 41 |
| TTF-ASR-S020/S020-**-**-0 | AI Tank Top Filter, S/R Line Series, #20 SAE Left and Right Ports, By-Pass, Gauge Port Location, No Check Valve | 163 | 41 |
| TTF-ASR-S020/S020-**-**-V | AI Tank Top Filter, S/R Line Series, #20 SAE Left and Right Ports, By-Pass, Gauge Port Location, w/Check Valve | 163 | 41 |
| TTF-ASR-S020/S020-00-00-0 | AI Tank Top Filter, S/R Line Series, #20 SAE Left and Right Ports, No By-Pass, No Gauge Port, No Check Valve | 163 | 41 |
| TTF-ASR-S020/S020-00-00-V | AI Tank Top Filter, S/R Line Series, #20 SAE Left and Right Ports, No By-Pass, No Gauge Port, w/Check Valve | 163 | 41 |
| TTF-ASR-S024/000-**-**-0 | AI Tank Top Filter, S/R Line Series, #24 SAE Left Port, No Right Port, By-Pass, Gauge Port Location, No Check Valve | 163 | 41 |
| TTF-ASR-S024/000-**-**-V | AI Tank Top Filter, S/R Line Series, #24 SAE Left Port, No Right Port, By-Pass, Gauge Port Location, w/Check Valve | 163 | 41 |
| TTF-ASR-S024/000-00-00-0 | AI Tank Top Filter, S/R Line Series, #24 SAE Left Port, No Right Port, No By-Pass, No Gauge Port, No Check Valve | 163 | 41 |
| TTF-ASR-S024/000-00-00-V | AI Tank Top Filter, S/R Line Series, #24 SAE Left Port, No Right Port, No By-Pass, No Gauge Port, w/Check Valve | 163 | 41 |
| TTF-ASR-S024/S024-**-**-0 | AI Tank Top Filter, S/R Line Series, #24 SAE Left and Right Ports, By-Pass, Gauge Port Location, No Check Valve | 163 | 41 |
| TTF-ASR-S024/S024-**-**-V | AI Tank Top Filter, S/R Line Series, #24 SAE Left and Right Ports, By-Pass, Gauge Port Location, w/Check Valve | 163 | 41 |
| TTF-ASR-S024/S024-00-00-0 | AI Tank Top Filter, S/R Line Series, #24 SAE Left and Right Ports, No By-Pass, No Gauge Port, No Check Valve | 163 | 41 |
| TTF-ASR-S024/S024-00-00-V | AI Tank Top Filter, S/R Line Series, #24 SAE Left and Right Ports, No By-Pass, No Gauge Port, w/Check Valve | 163 | 41 |
| TTF-ITB-B008-0 | Tank Top Filter, Integral Breather Series, 1/2" BSP Inlet Port | 160 | 41 |
| TTF-ITB-B012-0 | Tank Top Filter, Integral Breather Series, 3/4" BSP Inlet Port | 160 | 41 |
| TTF-ITB-P008-0 | Tank Top Filter, Integral Breather Series, 1/2" NPT Inlet Port | 160 | 41 |
| TTF-ITB-P012-0 | Tank Top Filter, Integral Breather Series, 3/4" NPT Inlet Port | 160 | 41 |
| TTF-ITB-S008-0 | Tank Top Filter, Integral Breather Series, #8 SAE Inlet Port | 160 | 41 |
| TTF-ITB-S012-0 | Tank Top Filter, Integral Breather Series, #12 SAE Inlet Port | 160 | 41 |
| TTF-SSR-B104/000-**-**-0 | Stl Tank Top Filter, S/R Line Series, 1 1/4" BSPT Left Port, No Right Port, By-Pass, Gauge Port Location, No Check V | 163 | 41 |
| TTF-SSR-B104/000-**-**-V | Stl Tank Top Filter, S/R Line Series, 1 1/4" BSPT Left Port, No Right Port, By-Pass, Gauge Port Location, w/Check V | 163 | 41 |
| TTF-SSR-B104/000-00-00-0 | Stl Tank Top Filter, S/R Line Series, 1 1/4" BSPT L Port, No R Port, No By-Pass, No Gauge Port, No Check Valve | 163 | 41 |
| TTF-SSR-B104/000-00-00-V | Stl Tank Top Filter, S/R Line Series, 1 1/4" BSPT L Port, No R Port, No By-Pass, No Gauge Port, w/Check Valve | 163 | 41 |

What is it, Where is it Index



| Part Number | Description | Catalog Page | Price Page |
|---------------------------|---|--------------|------------|
| TTF-SSR-B104/B104-***-0 | Stl Tank Top Filter, S/R Line Series, 1 1/4" BSPT Left and Right Ports, By-Pass, Gauge Port Location, No Check Valve | 163 | 41 |
| TTF-SSR-B104/B104-***-V | Stl Tank Top Filter, S/R Line Series, 1 1/4" BSPT Left and Right Ports, By-Pass, Gauge Port Location, w/Check Valve | 163 | 41 |
| TTF-SSR-B104/B104-00-00-0 | Stl Tank Top Filter, S/R Line Series, 1 1/4" BSPT Left and Right Ports, No By-Pass, No Gauge Port, No Check Valve | 163 | 41 |
| TTF-SSR-B104/B104-00-00-V | Stl Tank Top Filter, S/R Line Series, 1 1/4" BSPT Left and Right Ports, No By-Pass, No Gauge Port, w/Check Valve | 163 | 41 |
| TTF-SSR-P104/000-***-0 | Stl Tank Top Filter, S/R Line Series, 1 1/4" NPT Left Port, No Right Port, By-Pass, Gauge Port, No Check Valve | 163 | 41 |
| TTF-SSR-P104/000-***-V | Stl Tank Top Filter, S/R Line Series, 1 1/4" NPT Left Port, No Right Port, By-Pass, Gauge Port, w/Check Valve | 163 | 41 |
| TTF-SSR-P104/000-00-00-0 | Stl Tank Top Filter, S/R Line Series, 1 1/4" NPT Left Port, No Right Port, No By-Pass, No Gauge Port, No Check Valve | 163 | 41 |
| TTF-SSR-P104/000-00-00-V | Stl Tank Top Filter, S/R Line Series, 1 1/4" NPT Left Port, No Right Port, No By-Pass, No Gauge Port, No Check Valve | 163 | 41 |
| TTF-SSR-P104/P104-***-0 | Stl Tank Top Filter, S/R Line Series, 1 1/4" NPT Left and Right Ports, No By-Pass, No Gauge Port, No Check Valve | 163 | 41 |
| TTF-SSR-P104/P104-***-V | Stl Tank Top Filter, S/R Line Series, 1 1/4" NPT Left and Right Ports, By-Pass, Gauge Port Location, w/Check Valve | 163 | 41 |
| TTF-SSR-P104/P104-00-00-0 | Stl Tank Top Filter, S/R Line Series, 1 1/4" NPT Left and Right Ports, No By-Pass, No Gauge Port, No Check Valve | 163 | 41 |
| TTF-SSR-P104/P104-00-00-V | Stl Tank Top Filter, S/R Line Series, 1 1/4" NPT Left and Right Ports, By-Pass, Gauge Port Location, w/Check Valve | 163 | 41 |
| TTF-SSR-P108/000-***-0 | Stl Tank Top Filter, S/R Line Series, 1 1/2" NPT Left Port, No Right Port, No By-Pass, No Gauge Port, No Check Valve | 163 | 41 |
| TTF-SSR-P108/000-***-V | Stl Tank Top Filter, S/R Line Series, 1 1/2" NPT Left Port, No Right Port, No By-Pass, No Gauge Port, w/Check Valve | 163 | 41 |
| TTF-SSR-P108/000-00-00-0 | Stl Tank Top Filter, S/R Line Series, 1 1/2" NPT Left Port, No Right Port, No By-Pass, No Gauge Port, No Check Valve | 163 | 41 |
| TTF-SSR-P108/000-00-00-V | Stl Tank Top Filter, S/R Line Series, 1 1/2" NPT Left Port, No Right Port, By-Pass, Gauge Port L, w/Check Valve | 163 | 41 |
| TTF-SSR-P108/P104-***-0 | Stl Tank Top Filter, S/R Line Series, 1 1/2" NPT L Port, 1 1/4" NPT R Port, No By-Pass, No Gauge Port, No Check V | 163 | 41 |
| TTF-SSR-P108/P104-***-V | Stl Tank Top Filter, S/R Line Series, 1 1/2" NPT Left Port, 1 1/4" NPT Right Port, By-Pass, Gauge Port, w/Check Valve | 163 | 41 |
| TTF-SSR-P108/P104-00-00-0 | Stl Tank Top Filter, S/R Line Series, 1 1/2" NPT L Port, 1 1/4" NPT R Port, No By-Pass, No Gauge Port, No Check V | 163 | 41 |
| TTF-SSR-P108/P104-00-00-V | Stl Tank Top Filter, S/R Line Series, 1 1/2" NPT Left Port, 1 1/4" NPT Right Port, By-Pass, Gauge Port, w/Check Valve | 163 | 41 |
| TTF-SSR-P108/P108-***-0 | Stl Tank Top Filter, S/R Line Series, 1 1/2" BSPT Left and Right Ports, By-Pass , Gauge Port Location, No Check V | 163 | 41 |
| TTF-SSR-P108/P108-***-V | Stl Tank Top Filter, S/R Line Series, 1 1/2" BSPT Left and Right Ports, No By-Pass, No Gauge Port, w/Check Valve | 163 | 41 |
| TTF-SSR-P108/P108-00-00-0 | Stl Tank Top Filter, S/R Line Series, 1 1/2" BSPT Left and Right Ports, No By-Pass, No Gauge Port, No Check Valve | 163 | 41 |
| TTF-SSR-P108/P108-00-00-V | Stl Tank Top Filter, S/R Line Series, 1 1/2" BSPT Left and Right Ports, By-Pass , Gauge Port Location, w/Check Valve | 163 | 41 |
| TTF-SSR-S020/000-***-0 | Stl Tank Top Filter, S/R Line Series, #20 SAE Left Port, No Right Port, No By-Pass, No Gauge Port, No Check Valve | 163 | 41 |
| TTF-SSR-S020/000-***-V | Stl Tank Top Filter, S/R Line Series, #20 SAE Left Port, No Right Port, By-Pass, Gauge Port Location, w/Check Valve | 163 | 41 |
| TTF-SSR-S020/000-00-00-0 | Stl Tank Top Filter, S/R Line Series, #20 SAE Left Port, No Right Port, No By-Pass, No Gauge Port, No Check Valve | 163 | 41 |
| TTF-SSR-S020/000-00-00-V | Stl Tank Top Filter, S/R Line Series, #20 SAE Left Port, No Right Port, By-Pass, Gauge Port Location, w/Check Valve | 163 | 41 |
| TTF-SSR-S020/S020-***-0 | Stl Tank Top Filter, S/R Line Series, #20 SAE Left and Right Ports, By-Pass, Gauge Port Location, No Check Valve | 163 | 41 |
| TTF-SSR-S020/S020-***-V | Stl Tank Top Filter, S/R Line Series, #20 SAE Left and Right Ports, By-Pass, Gauge Port Location, w/Check Valve | 163 | 41 |
| TTF-SSR-S020/S020-00-00-0 | Stl Tank Top Filter, S/R Line Series, #20 SAE Left and Right Ports, No By-Pass, No Gauge Port, No Check Valve | 163 | 41 |
| TTF-SSR-S020/S020-00-00-V | Stl Tank Top Filter, S/R Line Series, #20 SAE Left and Right Ports, No By-Pass, No Gauge Port, w/Check Valve | 163 | 41 |
| TTF-SSR-S024/000-***-0 | Stl Tank Top Filter, S/R Line Series, #24 SAE Left Port, No Right Port, No By-Pass, No Gauge Port, No Check Valve | 163 | 41 |
| TTF-SSR-S024/000-***-V | Stl Tank Top Filter, S/R Line Series, #24 SAE Left Port, No Right Port, By-Pass, Gauge Port Location, w/Check Valve | 163 | 41 |
| TTF-SSR-S024/000-00-00-0 | Stl Tank Top Filter, S/R Line Series, #24 SAE Left Port, No Right Port, No By-Pass, No Gauge Port, No Check Valve | 163 | 41 |
| TTF-SSR-S024/000-00-00-V | Stl Tank Top Filter, S/R Line Series, #24 SAE Left Port, No Right Port, By-Pass, Gauge Port Location, w/Check Valve | 163 | 41 |
| TTF-SSR-S024/S024-***-0 | Stl Tank Top Filter, S/R Line Series, #24 SAE Left and Right Ports, By-Pass, Gauge Port Location, No Check Valve | 163 | 41 |
| TTF-SSR-S024/S024-***-V | Stl Tank Top Filter, S/R Line Series, #24 SAE Left and Right Ports, By-Pass, Gauge Port Location, w/Check Valve | 163 | 41 |
| TTF-SSR-S024/S024-00-00-0 | Stl Tank Top Filter, S/R Line Series, #24 SAE Left and Right Ports, No By-Pass, No Gauge Port, No Check Valve | 163 | 41 |
| TTF-SSR-S024/S024-00-00-V | Stl Tank Top Filter, S/R Line Series, #24 SAE Left and Right Ports, No By-Pass, No Gauge Port, w/Check Valve | 163 | 41 |
| VA-A03/05-EAA | D03 to D05 Aluminum Valve Adaptor | 93 | 24 |
| VA-A03/05-EBA | D03 to D05 Aluminum Valve Adaptor | 93 | 24 |
| VA-A03/05-MAA | D03 to D05 Aluminum Valve Adaptor | 93 | 24 |
| VA-A03/05-MBA | D03 to D05 Aluminum Valve Adaptor | 93 | 24 |
| VA-A05/08-EAA | D05 to D08 Aluminum Valve Adaptor | 94 | 24 |
| VA-A05/08-MAA | D05 to D08 Aluminum Valve Adaptor | 94 | 24 |
| VA-AF6/F7-EAA | 2F06 to 2F07 Aluminum Valve Adaptor | 95 | 24 |
| VA-AF6/F7-MAA | 2F06 to 2F07 Aluminum Valve Adaptor | 95 | 24 |
| VA-AP8/P0-EAA | P08 to P10 Aluminum Valve Adaptor | 96 | 24 |
| VA-AP8/P0-MAA | P08 to P10 Aluminum Valve Adaptor | 96 | 24 |
| VA-S03/05-EAA | D03 to D05 Steel Valve Adaptor | 93 | 24 |
| VA-S03/05-EBA | D03 to D05 Steel Valve Adaptor | 93 | 24 |
| VA-S03/05-MAA | D03 to D05 Steel Valve Adaptor | 93 | 24 |
| VA-S03/05-MBA | D03 to D05 Steel Valve Adaptor | 93 | 24 |
| VA-S05/08-EAA | D05 to D08 Steel Valve Adaptor | 94 | 24 |
| VA-S05/08-MAA | D05 to D08 Steel Valve Adaptor | 94 | 24 |
| VA-SF6/F7-EAA | 2F06 to 2F07 Steel Valve Adaptor | 95 | 24 |
| VA-SF6/F7-MAA | 2F06 to 2F07 Steel Valve Adaptor | 95 | 24 |
| VA-SP8/P0-EAA | P08 to P10 Steel Valve Adaptor | 96 | 24 |
| VA-SP8/P0-MAA | P08 to P10 Steel Valve Adaptor | 96 | 24 |

Make the Connection with **magnaloy**

*Whatever your Fluid Power Unit needs,
magnaloy has the products
to keep you connected.*



Flexible Drive Couplings

Top-of-the-line magnesium couplings are lighter, yet stronger than either cast iron or aluminum. They also offer better corrosion resistance and easier handling.



Magnaloy Hydraulic Bar Manifolds & Accessories

Complete line of In-line Bar Manifolds, Subplates, Cover Plates, Valve Adaptors, Integrated Circuit Manifolds, and Accessories to make the design and fabrication of Hydraulic Circuitry simple and easy. Wide range of sizes include: D03, D05, D05H & D08 in aluminum and steel with ports available in SAE, NPTF, BSPP, and BSPT styles. Custom design and fabrication also available, consult factory.

Accessories

Filler Breather Adaptors, Filler Breathers, Reservoir Flanges, Suction Strainers, Gauge Isolators, Liquid Level Gauges, Modular O-Ring Kits.

Pump/Motor Mounts

Precision machined aluminum & custom steel pump/motor mounts directly connect the motor and pump while ensuring accurate shaft alignment and enclosing the coupling. Vertical and horizontal models readily available from stock.



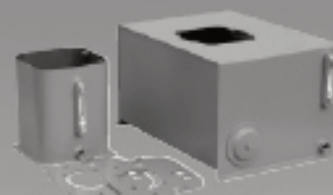
Rod End Couplers

Two models of accurately machined high tensile cylinder rod end alignment couplers offer 7° or 10° spherical and 1/8" parallel misalignment capabilities.



PM 90 Couplings

Economical PM-90 Iron Powder Couplings have long lasting nitrile, hytrel or urethane inserts. Double set screws give excellent gripping power.



Magnaloy Reservoirs & Reservoir Accessories

Magnaloy offers a complete line of standard reservoirs and reservoir accessories. In addition, we offer custom reservoir fabrication to meet our customer specific needs. Reservoir accessories such as Clean Out Covers and SAE Couplings are available for the "do-it-yourself" reservoir manufacturer.



Magnaloy Pressure Switch

Pressure Sensing switch capable of sensing up to three (3) separate pressures. Each sensor is externally independently adjustable from 200 to 4000 psi. Viton seals provide wide fluid compatibility range.