



LIST PRICES
 Effective Oct 7, 2017
 Subject to change
 upon notice

**Flexible Drive Couplings PM 90 Couplings Pump/Motor Mounts
 Hydraulic Manifolds & Manifold Accessories
 Reservoirs Reservoir Accessories Rod End Alignment Couplers Price List**



Full Product/Price Index
 On Inside Coveri

PREMIUM FLEXIBLE
 DRIVE COUPLINGS ...1,2

PM 90 COUPLINGS3

PUMP/MOTOR
 MOUNTS4-10

BAR MANIFOLDS ...10-19

INTEGRATED CIRCUIT
 BAR MANIFOLDS20

SUBPLATES21-23

COVER PLATES23

VALVE ADAPTORS24

ISOLATION PLUGS24

MANIFOLD
 ACCESSORIES25

HEADER BAR
 MANIFOLDS26-28

JUNCTION BAR
 MANIFOLDS29-31

RESERVOIRS32-37

RESERVOIR
 ACCESSORIES37-47

ROD END ALIGNMENT
 COUPLERS47

What is it, Where is it
 Index48-73



PREMIUM FLEXIBLE DRIVE COUPLINGS	
Coupling Hubs and Inserts	1
PM 90 FLEXIBLE DRIVE COUPLINGS	
Coupling Hubs and Inserts	3
PUMP/MOTOR MOUNTS	
Horizontal Aluminum Pump/Motor Mounts	4
Vertical Aluminum Pump/Motor Mounts	6
Aluminum Pump/Engine Mounts	7
Welded Steel Horizontal Mounts	8
Welded Steel Pump/Engine Mounts	8
Welded Steel Vertical Pump/Motor Mounts	9
Service Window Covers	10
BAR MANIFOLDS	
D03 Standard Design	10
D03 Standard Flow Retro Design Parallel	12
D03 High Flow Retro Design Parallel	13
D05 Standard Design.....	15
D05 High Flow Standard Design Parallel	16
D08 Standard Design.....	18
D08 High Flow Retro Design.....	19
INTEGRATED CIRCUIT BAR MANIFOLDS	20
SUBPLATES	
D03 Super Saver & Side Ported	21
D05 Super Saver & Side Ported	21
D08 Side Ported	23
COVER PLATES	
D03, D05 & D08 Cover Plates	23
VALVE ADAPTORS	24
ISOLATION PLUGS	24
MANIFOLD ACCESSORIES	
Pilot Adaptors, Unloading Modules, Orifice Plates, Tapping Plated.....	25
Relief Valve Cartridges	25
HEADER BAR MANIFOLDS	
0 Degree	26
90 Degree	27
180 Degree	28
JUNCTION BAR MANIFOLDS	
90 Degree	29
180 Degree	30
270 Degree	31
RESERVOIRS	
Vertical Econo & Dual Reservoirs	32
JIC Reservoirs	33
L Series Reservoirs	33
T Series Reservoirs	34
Horizontal Series Reservoirs	35
DIN Style Reservoirs	35
Drip Pans & Stacking Modules for JIC Reservoirs	36
End Covers	37
RESERVOIR ACCESSORIES	
Filler Breathers	38
Reservoir Flanges	39
SAE Full & Half Couplings	40
Channel Mounted Cushion Clamps	40
Modular Stackable Cushion Clamps	40
Clamp Anchor Channel	41
Suction Strainers	41
Tank Diffusers	42
Filter Heads & Elements	42
Pressure Gauges	44
Gauge Isolators	45
Pressure Switch	45
Liquid Level Gauges	45
Motor Base Plates	45
Motor Dampening Bars	46
Modular O'Ring Kit	47
ROD END COUPLERS M and R Series	47
What is it, Where is it Index	48

Filler Breathers

Spin-on Filler Breather Adaptors		
Part Number	Description	List Price
FBS-10012-012P	NPT Style Spin-on	\$22.30
FBS-10216-012P	NPT Style Spin-on	\$22.30
FBS-10816-104P	NPT Style Spin-on	\$22.30
FBS-10816-F	Flange Style Spin-on	\$66.80
FBS-10816-F-G	Flange Style w/Gauge Port	\$104.10
FBS-10012-B	Bayonet Style Spin-on	\$33.30
FBS-10216-B	Bayonet Style Spin-on	\$38.90
FBS-10816-B	Bayonet Style Spin-on	\$38.00

Filler Breather Caps			
Part Number	Custom Pt No Code ¹	Description	List Price
FB-C-A	A	"A" Cap	\$9.10
FB-C-D	D	"D" Cap	\$11.60
FB-C-H	H	"H" Cap	\$16.30
FB-C-K	K	"K" Cap	\$15.90
FB-C-MB-P004		Mini Cap 1/4" NPT	\$13.70
FB-C-MB-P006		Mini Cap 3/8" NPT	\$13.70
FB-C-MB-P008		Mini Cap 1/2" NPT	\$19.90
FB-C-MB-P012		Mini Cap 3/4" NPT	\$19.90

Filler Breather Mounting Flanges			
Part Number	Custom Pt No Code ¹	Description	List Price
FB-F-008	008	008 Flange 1/2" Height	\$6.40
FB-F-108	108	108 Flange 1 1/2" Height	\$16.00
FB-F-600	600	600 Flange 6" Height	\$29.20

Other Filler Breather Components			
Part Number	Custom Pt No Code ¹	Description	List Price
FB-O-L	L	Lock Kit (w/out Pad Lock)	\$4.20
FB-O-PL	PL	Pad Lock	\$8.90
FB-O-SM	SM	Side Mount Kit (No Cap)	\$32.80
FB-O-D*	D- -	Dipstick (less than 6")	\$9.20
FB-O-D*	D- -	Dipstick (6" or greater)	\$11.30

* Dipstick Option can be ordered as part of a cap assembly ONLY.

Filler Breather Screens			
Part Number	Custom Pt No Code ¹	Description	List Price
FB-S-N	N ²	"N" Screen - Brass - 6"	Quote
FB-S-P	P	"P" Screen - Nylon - 4"	\$11.70
FB-S-R	R ²	"R" Screen - Brass - 4"	\$11.50
FB-S-V	V ²	"V" Screen - Brass -9 1/4"	Quote
FB-S-W	W	"W" Screen - Stainless - 3 1/4" Length	\$9.00
FB-S-X	X	"X" Screen - Stainless - 6 1/2"	\$13.10
FB-S-Y	Y	"Y" Screen - Stainless - 8 1/4" Length	\$14.00
FB-S-Z	Z	"Z" Screen - Stainless - 10 1/4" Length	\$11.60
FB-S-C16	C16	"C" Screen - Stainless - 3" Length, 16 mesh	\$13.60

Standard Filler Breather Assemblies		
Part Number	Description	List Price
FB-A008W	A Cap - "W" Screen	\$13.90
FB-A008P	A Cap - "P" Screen	\$17.30
FB-K008W	K Cap - "W" Screen	\$23.30

1 Code used in part number breakdown on page 137 in our Product Catalog.

2 Check with factory for availability on these screens.

Return Line Flanges

Reservoir Return Line Flanges - Pipe Sizes		
Part Number	Description	List Price
PREMIUM LINE		
RLF-008P	1/2" Pipe	\$24.80
RLF-012P	3/4" Pipe	\$24.80
RLF-100P	1" Pipe	\$24.80
RLF-104P	1 1/4" Pipe	\$24.80
RLF-108P	1 1/2" Pipe	\$24.80
RLF-200P	2" Pipe	\$24.80
ECONOMY LINE		
RLFE-000P	Blank	\$11.40
RLFE-008P	1/2" Pipe	\$11.40
RLFE-012P	3/4" Pipe	\$11.70
RLFE-100P	1" Pipe	\$11.30
RLFE-104P	1 1/4" Pipe	\$11.30
RLFE-108P	1 1/2" Pipe	\$11.80
RLFE-200P	2" Pipe	\$11.40

Reservoir Return Line Flanges - Tube Sizes		
Part Number	Description	List Price
PREMIUM LINE		
RLF-008T	1/2" Tube	\$25.50
RLF-012T	3/4" Tube	\$24.80
RLF-100T	1" Tube	\$24.80
RLF-104T	1 1/4" Tube	\$24.80
RLF-108T	1 1/2" Tube	\$24.80
RLF-200T	2" Tube	\$24.80
ECONOMY LINE		
RLFE-006T	3/8" Tube	\$11.40
RLFE-008T	1/2" Tube	\$11.30
RLFE-012T	3/4" Tube	\$11.40
RLFE-100T	1" Tube	\$11.40
RLFE-104T	1 1/4" Tube	\$11.40
RLFE-108T	1 1/2" Tube	\$11.40
RLFE-200T	2" Tube	\$11.30

Suction Line Flanges

Reservoir Suction Line Flanges - Pipe Sizes		
Part Number	Description	List Price
PREMIUM LINE		
SLF-008P	1/2" Pipe	\$32.30
SLF-012P	3/4" Pipe	\$30.60
SLF-100P	1" Pipe	\$32.30
SLF-104P	1 1/4" Pipe	\$30.00
SLF-108P	1 1/2" Pipe	\$32.30
SLF-200P	2" Pipe	\$30.00
ECONOMY LINE 4 1/2" Cutout		
SLFE-500-000P	Blank	\$28.10
SLFE-500-008P	1/2" Pipe	\$19.40
SLFE-500-012P	3/4" Pipe	\$19.40
SLFE-500-100P	1" Pipe	\$19.40
SLFE-500-104P	1 1/4" Pipe	\$19.40
SLFE-500-108P	1 1/2" Pipe	\$20.70
SLFE-500-200P	2" Pipe	\$20.70
ECONOMY LINE 6 1/2" Cutout		
SLFE-700-108P	1 1/2" Pipe	\$27.70
SLFE-700-200P	2" Pipe	\$28.50
SLFE-700-208P	2 1/2" Pipe	\$28.50
SLFE-700-300P	3" Pipe	\$28.20

Reservoir Suction Line Flanges - Tube Sizes		
Part Number	Description	List Price
PREMIUM LINE		
SLF-008T	1/2" Tube	\$30.00
SLF-012T	3/4" Tube	\$32.30
SLF-100T	1" Tube	\$30.00
SLF-104T	1 1/4" Tube	\$30.00
SLF-108T	1 1/2" Tube	\$30.60
SLF-200T	2" Tube	\$30.00
ECONOMY LINE 4 1/2" Cutout		
SLFE-500-006T	3/8" Tube	\$19.40
SLFE-500-008T	1/2" Tube	\$19.40
SLFE-500-012T	3/4" Tube	\$19.40
SLFE-500-100T	1" Tube	\$19.40
SLFE-500-104T	1 1/4" Tube	\$19.40
SLFE-500-108T	1 1/2" Tube	\$20.10



SAE Full and Half Couplings

Part Number	Description	List Price
SAE to NPT Full Couplings		
4S-4N-TD	#4 SAE to 1/4" NPT	\$6.20
6S-6N-TD	#6 SAE to 3/8" NPT	\$6.90
8S-8N-TD	#8 SAE to 1/2" NPT	\$5.80
10S-12N-TD	#10 SAE to 3/4" NPT	\$14.60
12S-12N-TD	#12 SAE to 3/4" NPT	\$9.40
16S-16N-TD	#16 SAE to 1" NPT	\$11.90
SAE to Socket Weld Full Couplings		
8S-8W	#8 SAE to 1/2" Pipe	\$9.30
12S-12W	#12 SAE to 3/4" Pipe	\$16.10
16S-16W	#16 SAE to 1" Pipe	\$20.80
20S-20W	#20 SAE to 1 1/4" Pipe	\$32.00
24S-24W	#24 SAE to 1 1/2" Pipe	\$44.00

Part Number	Description	List Price
SAE Half Couplings		
4S-TD	#4 SAE	\$4.50
6S-TD	#6 SAE	\$5.10
8S-TD	#8 SAE	\$4.30
10S-TD	#10 SAE	\$7.90
12S-TD	#12 SAE	\$6.50
16S-TD	#16 SAE	\$14.40
20S-TD	#20 SAE	\$20.70
24S-TD	#24 SAE	\$24.60

Channel Mounted Cushion Clamps

Channel Mounted Cushion Clamps - TUBE SIZES

Part Number	Description	List Price	Box Quantity	List Per Box
MCC-008T	1/4" Tube	\$ 1.90	25	\$47.50
MCC-012T	3/8" Tube	\$1.90	25	\$47.50
MCC-016T	1/2" Tube	\$1.90	25	\$47.50
MCC-020T	5/8" Tube	\$1.90	25	\$47.50
MCC-024T	3/4" Tube	\$2.10	25	\$52.50
MCC-028T	7/8" Tube	\$2.40	25	\$60.00
MCC-100T	1" Tube	\$2.50	25	\$62.50
MCC-104T	1 1/8" Tube	\$2.80	20	\$56.00
MCC-106T	1 3/16" Tube	Quote	20	Quote
MCC-108T	1 1/4" Tube	\$3.00	20	\$60.00
MCC-112T	1 3/8" Tube	\$3.30	20	\$66.00
MCC-116T	1 1/2" Tube	\$3.60	20	\$72.00
MCC-120T	1 5/8" Tube	\$4.30	20	\$86.00
MCC-124T	1 3/4" Tube	\$4.20	20	\$84.00
MCC-128T	1 7/8" Tube	\$5.60	20	\$112.00
MCC-200T	2" Tube	\$4.60	10	\$46.00
MCC-204T	2 1/8" Tube	\$6.40	10	\$64.00
MCC-208T	2 1/4" Tube	\$6.90	10	\$69.00
MCC-212T	2 3/8" Tube	\$7.10	10	\$71.00
MCC-216T	2 1/2" Tube	\$7.70	5	\$38.50
MCC-220T	2 5/8" Tube	\$7.20	5	\$36.00
MCC-228T	2 7/8" Tube	\$9.20	5	\$46.00
MCC-300T	3" Tube	\$9.40	5	\$47.00
MCC-304T	3 1/8" Tube	\$9.40	5	\$47.00
MCC-320T	3 5/8" Tube	\$12.80	5	\$64.00
MCC-404T	4 1/8" Tube	\$17.70	5	\$88.50

Channel Mounted Cushion Clamps - PIPE SIZES

Part Number	Description	List Price	Box Quantity	List Per Box
MCC-008P	1/4" Pipe	\$ 2.30	25	\$57.50
MCC-012P	3/8" Pipe	\$2.50	25	\$62.50
MCC-016P	1/2" Pipe	\$2.60	25	\$65.00
MCC-024P	3/4" Pipe	\$2.90	20	\$58.00
MCC-100P	1" Pipe	\$3.30	20	\$66.00
MCC-108P	1 1/4" Pipe	\$4.40	20	\$88.00
MCC-116P	1 1/2" Pipe	\$5.60	20	\$112.00
MCC-200P	2" Pipe	\$7.10	10	\$71.00
MCC-216P	2 1/2" Pipe	\$9.20	5	\$46.00
MCC-300P	3" Pipe	\$12.10	5	\$60.50
MCC-316P	3 1/2" Pipe	\$17.60	5	\$88.00
MCC-400P	4" Pipe	\$23.10	5	\$115.50
MCC-500P	5" Pipe	\$36.60	1	\$36.60
MCC-600P	6" Pipe	\$49.50	1	\$49.50

Modular-Stackable Cushion Clamps

Contact Factory for Pricing and Selection

Clamp Anchor Channel

Clamp Anchor Channel - SINGLE		
Part Number	Description	List Price
MAC-S12100-036/S	12ga Steel 36"	Quote
MAC-S12100-048/S	12ga Steel 48"	\$12.60
MAC-S12100-120/S	12ga Steel 120"	\$27.80
MAC-S12028-036/S	12ga Steel 36"	Quote
MAC-S12028-048/S	12ga Steel 48"	\$11.90
MAC-S12028-120/S	12ga Steel 120"	\$25.00
MAC-S14026-048/S	14ga Steel 48"	\$10.20
MAC-S14026-120/S	14ga Steel 120"	\$22.50
MAC-S14026-048/SS4	14ga 304 SS 48"	Quote
MAC-S14026-120/SS4	14ga 304 SS 120"	Quote
MAC-S14026-048/SS6	14ga 316 SS 48"	Quote
MAC-S14026-120/SS6	14ga 316 SS 120"	Quote

Clamp Anchor Channel - DOUBLE		
Part Number	Description	List Price
MAC-D12200-048/S	12ga Steel 48"	\$26.90
MAC-D12200-120/S	12ga Steel 120"	\$62.40
MAC-D12124-048/S	12ga Steel 48"	\$28.10
MAC-D12124-120/S	12ga Steel 120"	\$56.20
MAC-D14120-048/S	14ga Steel 48"	\$38.30
MAC-D14120-120/S	14ga Steel 120"	\$51.20
MAC-D14120-048/SS4	14ga 304 SS 48"	Quote
MAC-D14120-120/SS4	14ga 304 SS 120"	Quote
MAC-D14120-048/SS6	14ga 316 SS 48"	Quote
MAC-D14120-120/SS6	14ga 316 SS 120"	Quote

Suction Strainers

Suction Strainers - Internally Mounted		
Part Number	By-Pass	List Price
SS-003P006-1-0	None	\$13.80
SS-005P008-1-0	None	\$13.40
SS-005P008-1-*	3 or 5 psi	\$24.10
SS-008P012-1-0	None	\$18.00
SS-008P012-1-*	3 or 5 psi	\$24.10
SS-010P100-1-0	None	\$19.20
SS-010P100-1-*	3 or 5 psi	\$35.10
SS-023P104-1-0	None	\$23.80
SS-023P104-1-*	3 or 5 psi	\$38.10
SS-032P108-1-0	None	\$30.90
SS-032P108-1-*	3 or 5 psi	\$42.50
SS-053P200-1-0	None	\$41.60
SS-053P200-1-*	3 or 5 psi	\$68.40
SS-075P208-1-0	None	\$79.50
SS-075P208-1-*	3 or 5 psi	\$94.20

* See page 153 in our Product Catalog for Part Number Breakdown on optional Wire Mesh and By-Pass settings.

Note: Mesh sizes on both the Internally and Externally Mounted Strainers, other than 100 Mesh, are QUOTED items.

Suction Strainers - Externally Mounted		
Part Number	By-Pass	List Price
SS-008P012/P104-1-0	None	\$30.30
SS-008P012/P104-1-*	3 or 5 psi	\$39.40
SS-014P100/P108-1-0	None	\$30.90
SS-014P100/P108-1-*	3 or 5 psi	\$40.80
SS-014P100/P300-1-0	None	\$49.00
SS-014P100/P300-1-*	3 or 5 psi	\$54.10
SS-014S020/P300-1-0	None	\$64.90
SS-014S020/P300-1-*	3 or 5 psi	\$70.00
SS-021S024/P300-1-0	None	\$74.50
SS-021S024/P300-1-*	3 or 5 psi	\$79.90
SS-023P104/P200-1-0	None	\$36.50
SS-023P104/P200-1-*	3 or 5 psi	\$46.00
SS-023P104/P300-1-0	None	\$52.50
SS-023P104/P300-1-*	3 or 5 psi	\$57.60
SS-032P108/P300-1-0	None	\$59.00
SS-032P108/P300-1-*	3 or 5 psi	\$64.30
SS-053P200/P300-1-0	None	\$79.60
SS-053P200/P300-1-*	3 or 5 psi	Quote
SS-053P200/P400-1-0	None	\$90.70
SS-053P200/P400-1-*	3 or 5 psi	\$99.60
SS-075P208/P400-1-0	None	\$97.40
SS-075P208/P400-1-*	3 or 5 psi	\$105.70

* See page 154 in our Product Catalog for Part Number Breakdown on optional Wire Mesh and By-Pass settings.

Tank Diffusers

Tank Diffusers		
Part Number	Outside Diameter	List Price
TD-014P008-D1	1.30"	\$30.00
TD-014P008-D2	3.20"	\$23.60
TD-025P012-D1	1.70"	\$24.10
TD-025P012-D2	3.20"	\$25.30
TD-040P100-D1	1.90"	Quote
TD-040P100-D2	3.20"	\$34.50

Tank Diffusers		
Part Number	Outside Diameter	List Price
TD-070P104-D1	3.20"	\$43.90
TD-095P108-D1	3.20"	\$43.90
TD-157P200-D1	4.20"	Quote
TD-224P208-D1	4.20"	\$70.40

Filter Heads and Elements

Spin-on Filter Heads with Δ P Indicator

Spin-on Filter Heads		
Part Number	Description	List Price
SFH-P104/00-0-0-00	1 1/4" NPT x 1 1/4" NPT - no options	\$54.70
SFH-S020/00-0-0-00	#20 SAE x #20 SAE - no options	\$54.70
SFH-B104/00-0-0-00	1 1/4" BSP x 1 1/4" BSP - no options	\$54.70

Option Price Adders		
Option	Description	List Price
By-Pass Valve Setting	All Codes	\$4.50
Gauge Port Location	Locations 1&3 or 4&6 (per set)	\$4.50
Gauge Port Location	Locations 2 or 5 (each)	\$4.50
Δ P Indicator Option	V Code	\$28.10
	E Code	\$43.20
	B Code	\$168.50

Spin-on Filter Elements					
Part Number	Description	List Price	Part Number	Description	List Price
Cellulose Media			Synthetic Media		
CSFE-003-069	6.9" Length, 3 Micron	\$29.70	SSFE-003-067	6.7" Length, 3 Micron	\$71.90
CSFE-010-069	6.9" Length, 10 Micron	\$23.70	SSFE-010-067	6.7" Length, 10 Micron	\$71.90
CSFE-025-069	6.9" Length, 25 Micron	\$23.70	SSFE-025-067	6.7" Length, 25 Micron	\$71.90
CSFE-141-069	6.9" Length, 141 Micron	\$63.40	SSFE-003-107	10.7" Length, 3 Micron	\$71.90
CSFE-003-109	10.9" Length, 3 Micron	\$50.10	SSFE-010-107	10.7" Length, 10 Micron	\$71.90
CSFE-003-109/WA	10.9" Length, 3 Micron, Water Absorbing	\$59.80	SSFE-025-107	10.7" Length, 25 Micron	\$71.90
CSFE-010-109	10.9" Length, 10 Micron	\$36.90			
CSFE-010-109/WA	10.9" Length, 10 Micron, Water Absorbing	\$56.50			
CSFE-025-109	10.9" Length, 25 Micron	\$36.90			
CSFE-141-109	10.9" Length, 141 Micron	\$86.10			

Filter Heads and Elements (continued)

Tank Top Filter Heads - Integral Breather Series

Integral Breather Tank Top Filter Heads		
Part Number	Description	List Price
TTF-ITB-P008-0	1/2" NPT - no Dipstick	\$49.50
TTF-ITB-S008-0	#8 SAE - no Dipstick	\$49.50
TTF-ITB-B008-0	1/2" BSP - no Dipstick	\$49.50
TTF-ITB-P012-0	3/4" NPT - no Dipstick	\$49.50
TTF-ITB-S012-0	#12 SAE - no Dipstick	\$49.50
TTF-ITB-B012-0	3/4" BSP - no Dipstick	\$49.50
Option Price Adders		
Dipstick	D Codes	\$17.50

Integral Breather Tank Top Filter Elements		
Part Number	Description	List Price
Cellulose Media		
CTTE-ITB-03N	3 Micron Nominal	\$23.90
CTTE-ITB-10N	10 Micron Nominal	\$23.90
CTTE-ITB-25N	25 Micron Nominal	\$23.90
Synthetic Media		
STTE-ITB-03A	3 Micron Absolute	Quote
STTE-ITB-10A	10 Micron Absolute	\$53.10

Tank Top Filter Heads - Suction /Return Line Series

Suction/Return Line Tank Top Filter Heads		
Part Number	Description	List Price
ALUMINUM BODY		
TTF-ASR-xxx/xxx-00-10-0	All L & R Ports - Code 10 Gauge Port Location, no Oil Fill Port	\$153.40
TTF-ASR-xxx/xxx-00-12-0	All L & R Ports - Code 12 Gauge Port Location, no Oil Fill Port	\$158.20
TTF-ASR-xxx/xxx-00-1P-0	All L & R Ports - Code 1P Gauge Port Location, 1 1/4" NPT Oil Fill Port	\$177.60
TTF-ASR-xxx/xxx-00-1S-0	All L & R Ports - Code 1S Gauge Port Location, #12 SAE Oil Fill Port	\$179.90
STEEL BODY		
TTF-SSR-xxx/xxx-00-10-0	All L & R Ports - Code 10 Gauge Port Location, no Oil Fill Port	\$153.40
TTF-SSR-xxx/xxx-00-12-0	All L & R Ports - Code 12 Gauge Port Location, no Oil Fill Port	\$158.20
TTF-SSR-xxx/xxx-00-1P-0	All L & R Ports - Code 1P Gauge Port Location, 1 1/4" NPT Oil Fill Port	\$177.60
TTF-SSR-xxx/xxx-00-1S-0	All L & R Ports - Code 1S Gauge Port Location, #12 SAE Oil Fill Port	\$179.90
Option Price Adders - all bodies		
Check Valve	V Code	\$10.80



Filter Heads and Elements (continued)

Suction/Retrun Line Tank Top Filter Elements		
Part Number	Description	List Price
Cellulose Media for TTF-ASR & TTF-SSR Body		
CTTE-ASR-003-092-BD	For Aluminum Body, 3 Micron, Bi-Directional Flow	\$27.40
CTTE-ASR-003-092-OI/WA	For Aluminum Body, 3 Micron, Outside to Inside Flow, Water Absorbing	\$35.00
CTTE-ASR-010-092-BD	For Aluminum Body, 10 Micron, Bi-Directional Flow	\$21.10
CTTE-ASR-025-092-BD	For Aluminum Body, 25 Micron, Bi-Directional Flow	\$21.10
CTTE-ASR-010-182-BD	For Aluminum Body, 10 Micron, Bi-Directional Flow	\$36.20
CTTE-ASR-025-182-BD	For Aluminum Body, 25 Micron, Bi-Directional Flow	\$36.20
CTTE-ASR-100-092-OI	For Aluminum Body, 141 Micron, Outside to Inside Flow	\$68.80
CTTE-ASR-100-092-IO	For Aluminum Body, 141 Micron, Inside to Outside Flow	\$68.80
CTTE-ASR-100-092-OI/M	For Aluminum Body, 141 Micron, Outside to Inside Flow, Magnetic	\$172.70
CTTE-ASR-100-092-IO/M	For Aluminum Body, 141 Micron, Inside to Outside Flow, Magnetic	\$172.70
CTTE-ASR-100-182-OI	For Aluminum Body, 141 Micron, Outside to Inside Flow	\$134.00
Synthetic Media for TTF-ASR & TTF-SSR Body		
STTE-ASR-003-092-OI	For Aluminum Body, 3 Micron, Outside to Inside Flow	\$90.70
STTE-ASR-010-092-OI	For Aluminum Body, 10 Micron, Outside to Inside Flow	\$67.60
STTE-ASR-003-182-OI	For Aluminum Body, 3 Micron, Outside to Inside Flow	\$175.20
STTE-ASR-010-182-OI	For Aluminum Body, 10 Micron, Outside to Inside Flow	\$152.20

Pressure Gauges

Pressure Gauges		
Part Number	Description	List Price
LFPG-208-xxx-04N/BS	2 1/2" Gauge, All Dial Ranges, 1/4" NPT Bottom Stem	\$37.80
LFPG-208-xxx-04N/RS	2 1/2" Gauge, All Dial Ranges, 1/4" NPT Rear Stem	\$37.80
LFPG-400-xxx-04N/BS	4" Gauge, All Dial Ranges, 1/4" NPT Bottom Stem	\$54.20
LFPG-400-xxx-08N/BS	4" Gauge, All Dial Ranges, 1/2" NPT Bottom Stem	\$54.20
LFPG-400-xxx-04N/RS	4" Gauge, All Dial Ranges, 1/4" NPT Rear Stem	\$69.70

Gauge Isolators

Part Number	Description	List Price
GI-01-SAE	Single Station - SAE	\$133.50
GI-01-NPT	Single Station - NPT	\$133.50
GI-06-SAE	Six Station - SAE	\$185.00

Pressure Switches

Part Number	Description	List Price
PS-400-115	Single Switch	\$61.30
PS-400-215	Double Switch	\$90.40
PS-400-315	Triple Switch*	Not Avail.
Options		
L or H Code	High or Low Pressure Rated Spring	\$6.40
	Pre-Set Pressrue Settings	\$6.40

* The Triple Pressure Switthch part number PS-400-315 has been discontinued. 1/23/17

Liquid Level Gauges

Liquid Level Gauges		
Part Number	Description	List Price
Standard Series		
SLLG-03T	3" Standard Gauge w/Temp	\$22.00
SLLG-03T-C	3" Standard Gauge w/Temp & Cover	\$28.40
SLLG-05T	5" Standard Gauge w/Temp	\$24.20
SLLG-05T-C	5" Standard Gauge w/Temp & Cover	\$30.70
SLLG-10T	10" Standard Gauge w/Temp	\$36.60
SLLG-10T-C	10" Standard Gauge w/Temp & Cover	\$44.70
Premium Series		
PLLG-03T	3" Premium Gauge w/Temp	\$39.50
PLLG-05T	5" Premium Gauge w/Temp	\$40.60
PLLG-10T	10" Premium Gauge w/Temp	\$87.20
Sight Glass Series		
SLSG-100	1 1/4" Nylon Sight Glass	\$9.10

Motor Base Plates

Part Number	Description	List Price
MBP-056/184	056C thru 184TC Base Plate	\$42.60
MBP-213/256	213TC thru 256TC Base Plate	\$59.40
MBP-284/326	284TC/TSC thru 326TC/TSC Base Plate	\$67.10



Reservoir Accessories

NEMA Motor Dampening Bars

Part Number	Description	List Price
Bolt Down Series		
MDB056-B	056C Motor Frame	\$169.90
MDB143-B	143TC Motor Frame	\$169.90
MDB145-B	145TC Motor Frame	\$184.20
MDB182-B	182TC Motor Frame	\$184.20
MDB184-B	184TC Motor Frame	\$184.20
MDB213-B	213TC Motor Frame	\$217.80
MDB215-B	215TC Motor Frame	\$232.20
MDB254-B	254TC Motor Frame	\$239.30
MDB256-B	256TC Motor Frame	\$265.60
MDB284-B	284TC Motor Frame	\$335.00
MDB286-B	286TC Motor Frame	\$390.00
MDB324-B	324TC Motor Frame	\$485.70
MDB326-B	326TC Motor Frame	\$485.70
MDB364-B	364TC Motor Frame	\$485.70
MDB365-B	365TC Motor Frame	\$519.80
MDB404-B	404TC Motor Frame	\$531.20
MDB405-B	405TC Motor Frame	\$636.50
MDB444-B	444TC Motor Frame	\$782.40
MDB445-B	445TC Motor Frame	\$782.40

Part Number	Description	List Price
Weld Series		
MDB056-W	056C Motor Frame	\$117.30
MDB143-W	143TC Motor Frame	\$121.40
MDB145-W	145TC Motor Frame	\$131.60
MDB182-W	182TC Motor Frame	\$131.60
MDB184-W	184TC Motor Frame	\$136.40
MDB213-W	213TC Motor Frame	\$160.30
MDB215-W	215TC Motor Frame	\$174.70
MDB254-W	254TC Motor Frame	\$193.80
MDB256-W	256TC Motor Frame	\$210.50
MDB284-W	284TC Motor Frame	\$306.30
MDB286-W	286TC Motor Frame	\$306.30
MDB324-W	324TC Motor Frame	\$390.00
MDB326-W	326TC Motor Frame	\$428.30
MDB364-W	364TC Motor Frame	\$428.30
MDB365-W	365TC Motor Frame	\$428.30
MDB404-W	404TC Motor Frame	\$469.00
MDB405-W	405TC Motor Frame	\$531.20
MDB444-W	444TC Motor Frame	\$705.90
MDB445-W	445TC Motor Frame	\$705.90

IEC Motor Dampening Bars

Part Number	Description	List Price
Bolt Down Series		
MDB071-B	IEC 71 Motor Size	\$203.80
MDB080-B	IEC 80 Motor Size	\$203.80
MDB090S-B	IEC 90 S Motor Size	\$221.10
MDB090L-B	IEC 90 L Motor Size	\$221.10
MDB100L-B	IEC 100 L Motor Size	\$221.10
MDB112M-B	IEC 112 M Motor Size	\$221.10
MDB132S-B	IEC 132 S Motor Size	\$278.60
MDB132M-B	IEC 132 M Motor Size	\$278.60
MDB160M-B	IEC 160 M Motor Size	\$402.00
MDB160L-B	IEC 160 L Motor Size	\$582.60
MDB180M-B	IEC 180 M Motor Size	\$582.60
MDB180L-B	IEC 180 L Motor Size	\$582.60
MDB200L-B	IEC 200 L Motor Size	\$637.50
MDB225S-B	IEC 225 S Motor Size	\$637.50
MDB225M-B	IEC 225 M Motor Size	\$637.50
MDB250M-B	IEC 250 M Motor Size	\$664.10
MDB280S-B	IEC 280 S Motor Size	\$939.00
MD280M-B	IEC 280 M Motor Size	\$939.00
MDB315S-B	IEC 315 S Motor Size	\$939.00
MDB315M-B	IEC 315 M Motor Size	\$939.00
MDB315L-B	IEC 315 L Motor Size	\$939.00

Part Number	Description	List Price
Weld Series		
MDB071-W	IEC 71 Motor Size	\$146.50
MDB080-W	IEC 80 Motor Size	\$146.50
MDB090S-W	IEC 90 S Motor Size	\$157.90
MDB090L-W	IEC 90 L Motor Size	\$157.90
MDB100L-W	IEC 100 L Motor Size	\$157.90
MDB112M-W	IEC 112 M Motor Size	\$157.90
MDB132S-W	IEC 132 S Motor Size	\$209.60
MDB132M-W	IEC 132 M Motor Size	\$209.60
MDB160M-W	IEC 160 M Motor Size	\$367.60
MDB160L-W	IEC 160 L Motor Size	\$467.70
MDB180M-W	IEC 180 M Motor Size	\$467.70
MDB180L-W	IEC 180 L Motor Size	\$467.70
MDB200L-W	IEC 200 L Motor Size	\$562.70
MDB225S-W	IEC 225 S Motor Size	\$562.70
MDB225M-W	IEC 225 M Motor Size	\$562.70
MDB250M-W	IEC 250 M Motor Size	\$586.30
MDB280S-W	IEC 280 S Motor Size	\$847.10
MD280M-W	IEC 280 M Motor Size	\$847.10
MDB315S-W	IEC 315 S Motor Size	\$847.10
MDB315M-W	IEC 315 M Motor Size	\$847.10
MDB315L-W	IEC 315 L Motor Size	\$847.10

Modular O-Ring Kits

Part Number	Description	List Price
ORK-12000	Buna O-Ring Kit	\$523.40
ORK-12001	Viton O-Ring Kit	\$1,478.40

Motor Dampening Bar Weld Pad Kits*

Part Number	Description	List Price
MWP056-256	056C thru 256TC Motor Frames	\$53.80
MWP284-286	284TC/TSC thru 286TC/TSC Motor Frames	\$76.60
MWP324-365	324TC/TSC thru 365TC/TSC Motor Frames	\$76.60
MWP404-405	404TC/TSC thru 405TC/TSC Motor Frames	\$89.80
MWP444-449	444TC/TSC thru 449TC/TSC Motor Frames	\$116.20
MWP071-132M	IEC 071 thru IEC 132 M Motor Size	\$53.80
MWP160M-180L	IEC 160 M thru IEC 180 L Motor Size	\$76.60
MWP200L-315L	IEC 200 L thru IEC 315 L Motor Size	\$76.60

* Kit includes 4 Weld Pads only.
Order Bolt Down Series Dampening Bars separately.

Rod End Couplers

M-Series Rod End Couplers		
Part Number	Description	List Price
M010-01024	M Series 5/16-24 Thread	\$33.60
M010-01224	M Series 3/8-24 Thread	\$33.60
M015-01420	M Series 7/16-20 Thread	\$32.50
M015-01620	M Series 1/2-20 Thread	\$33.60
M020-02018	M Series 5/8-18 Thread	\$57.00
M020-02416	M Series 3/4-16 Thread	\$55.20
M020-02814	M Series 7/8-14 Thread	\$57.00
M030-10014	M Series 1-14 Thread	\$87.80
M040-10812	M Series 1 1/4-12 Thread	\$146.70
M050-11612	M Series 1 1/2-12 Thread	\$231.00
M050-12412	M Series 1 3/4-12 Thread	\$231.00
M060-12812	M Series 1 7/8-12 Thread	\$349.90
M060-20012	M Series 2-12 Thread	\$349.90
M070-20812	M Series 2 1/4-12 Thread	\$780.70
M080-21612	M Series 2 1/2-12 Thread	\$1,026.40
M080-22412	M Series 2 3/4-12 Thread	\$1,026.40
M080-30012	M Series 3-12 Thread	\$1,026.40
M100-30812	M Series 3 1/4-12 Thread	Quote
M140-40812	M Series 4 1/4-12 Thread	Quote

R-Series Rod End Couplers		
Part Number	Description	List Price
R010-01024	R Series 5/16-24 Thread	\$29.10
R010-01224	R Series 3/8-24 Thread	\$29.10
R020-01420	R Series 7/16-20 Thread	\$33.70
R020-01620	R Series 1/2-20 Thread	\$33.70
R020-02018	R Series 5/8-18 Thread	\$42.70
R030-02416	R Series 3/4-16 Thread	\$48.60
R030-02814	R Series 7/8-14 Thread	\$48.60
R040-10014	R Series 1-14 Thread	\$81.40
R040-10812	R Series 1 1/4-12 Thread	\$106.40

For Availability of Other Series / Thread Combinations, Consult Factory



What is it, Where is it Index

Part Number	Description	Catag Page	Price Page
056	NEMA 056 Motor Service Window Cover	18	10
10S	SAE Half Coupling, #10 SAE	152	40
10S-8N	SAE to NPT Full Coupling, #10 SAE to 1/4" NPT		
10S-8W	SAE to Socket Weld Full Coupling, #10 SAE to 1/2" Pipe	152	40
12S	SAE Half Coupling, #12 SAE	152	40
12S-12N	SAE to NPT Full Coupling, #12 SAE to 3/4" NPT		
12S-12W	SAE to Socket Weld Full Coupling, #12 SAE to 3/4" Pipe	152	40
16S	SAE Half Coupling, #16 SAE	152	40
16S-16N	SAE to NPT Full Coupling, #16 SAE to 1" NPT		
16S-16W	SAE to Socket Weld Full Coupling, #16 SAE to 1" Pipe	152	40
182-1	NEMA 182 Motor Service Window Cover	18	10
182-2	NEMA 182 Motor Service Window Cover	18	10
182-3	NEMA 182 Motor Service Window Cover	18	10
182-4	NEMA 182 Motor Service Window Cover	18	10
20S	SAE Half Coupling, #20 SAE	152	40
20S-20W	SAE to Socket Weld Full Coupling, #20 SAE to 1 1/4" Pipe	152	40
24S	SAE Half Coupling, #24 SAE	152	40
24S-24W	SAE to Socket Weld Full Coupling, #24 SAE to 1 1/2" Pipe	152	40
284-1	NEMA 284 Motor Service Window Cover	18	10
284-2	NEMA 284 Motor Service Window Cover	18	10
284-3	NEMA 284 Motor Service Window Cover	18	10
444-1	NEMA 444 Motor Service Window Cover	18	10
444-1	NEMA 444 Motor Service Window Cover	18	10
444-2	NEMA 444 Motor Service Window Cover	18	10
444-2	NEMA 444 Motor Service Window Cover	18	10
444-3	NEMA 444 Motor Service Window Cover	18	10
444-3	NEMA 444 Motor Service Window Cover	18	10
444-4	NEMA 444 Motor Service Window Cover	18	10
444-4	NEMA 444 Motor Service Window Cover	18	10
444-5	NEMA 444 Motor Service Window Cover	18	10
4S	SAE Half Coupling, #4 SAE	152	40
4S-4N	SAE to NPT Full Coupling, #4 SAE to 1/4" NPT	152	40
6S	SAE Half Coupling, #6 SAE	152	40
6S-6N	SAE to NPT Full Coupling, #6 SAE to 3/8" NPT	152	40
8S	SAE Half Coupling, #8 SAE	152	40
8S-8N	SAE to NPT Full Coupling, #8 SAE to 1/2" NPT	152	40
8S-8W	SAE to Socket Weld Full Coupling, #8 SAE to 1/2" Pipe	152	40
BK-A03	D03 Manifold Mounting Bracket	203	11
BK-A03	D03 L Bracket Kit for D03 Manifold	203	11
BK-A05	D05 Manifold Mounting Bracket	203	15
BK-A05	D05 L Bracket Kit for D05 Manifold	203	15
BK-A08	D08 Manifold Mounting Bracket	203	
BK-A08	D08 L Bracket Kit for D08 Manifold	203	
BK-IC08	D08 Integrated Circuit Mounting Bracket	203	
BM-AHP05*3.**.*/*	D05 Aluminum High Flow Parallel Bar Manifold - 3 1/4" spcaing	60	16
BM-AHP05*5.**.*/*	D05 Aluminum High Flow Parallel Bar Manifold - 5" spcaing	60	16
BM-AHP5E*3.**.*/*	D05E Alt A Aluminum High Flow Parallel Bar Manifold - 3 1/4" spcaing	62	17
BM-AHP5E*5.**.*/*	D05E Alt A Aluminum High Flow Parallel Bar Manifold - 5" spcaing	62	17
BM-AHP5H*3.**.*/*	D05H Alt B Aluminum High Flow Parallel Bar Manifold - 3 1/4" spcaing	64	17
BM-AHP5H*5.**.*/*	D05H Alt B Aluminum High Flow Parallel Bar Manifold - 5" spcaing	64	17
BM-ASP03*2.**.*/*	D03 Aluminum Standard Flow Parallel Bar Manifold - 2" Spacing	48	11
BM-ASP03*4.**.*/*	D03 Aluminum Standard Flow Parallel Bar Manifold - 4" Spacing	48	11
BM-ASP05*3.**.*/*	D05 Aluminum Standard Flow Parallel Bar Manifold - 3 1/4" Spacing	56	15
BM-ASP05*5.**.*/*	D05 Aluminum Standard Flow Parallel Bar Manifold - 5" Spacing	56	15
BM-ASP08*5.**.*/*	D08 Aluminum Standard Flow Parallel Bar Manifold - 5 1/4" Spacing	66	18
BM-ASP08*7.**.*/*	D08 Aluminum Standard Flow Parallel Bar Manifold - 7" Spacing	66	18
BM-ASS03*2.**.*/*	D03 Aluminum Standard Flow Series Bar Manifold - 2" Spacing	50	12
BM-ASS05*3.**.*/*	D05 Aluminum Standard Flow Series Bar Manifold - 3 1/4" Spacing	58	15
BM-ASS05*5.**.*/*	D05 Aluminum Standard Flow Series Bar Manifold - 5" Spacing	58	15
BM-ASS08*7.**.*/*	D08 Aluminum Standard Flow Series Bar Manifold - 7" Spacing	70	19
BMR-AHP03*2.**.*/*	D03 Retro Design Aluminum High Flow Parallel Bar Manifold - 2 1/8" Spacing	54	14
BMR-AHP03*4.**.*/*	D03 Retro Design Aluminum High Flow Parallel Bar Manifold - 4" Spacing	54	14
BMR-AHP08*5.**.*/*	D08 Retro Design Aluminum High Flow Parallel Bar Manifold - 5 1/4" Spacing	68	19
BMR-AHP08*7.**.*/*	D08 Retro Design Aluminum High Flow Parallel Bar Manifold - 7" Spacing	68	19
BMR-ASP03*2.**.*/*	D03 Retro Design Aluminum Standard Flow Parallel Bar Manifold - 2 1/8" Spacing	52	13
BMR-ASP03*4.**.*/*	D03 Retro Design Aluminum Standard Flow Parallel Bar Manifold - 4" Spacing	52	13
BMR-SHP03*2.**.*/*	D03 Retro Design Steel Standard Flow Parallel Bar Manifold - 2 1/8" Spacing	54	14
BMR-SHP03*4.**.*/*	D03 Retro Design Steel Standard Flow Parallel Bar Manifold - 4" Spacing	54	14
BMR-SHP08*5.**.*/*	D08 Retro Design Steel High Flow Parallel Bar Manifold - 5 1/4" Spacing	68	19

What is it, Where is it Index



Part Number	Description	Catag Page	Price Page
BMR-SHP08*7-**-*/	D08 Retro Design Steel High Flow Parallel Bar Manifold - 7" Spacing	68	19
BMR-SSP03*2-**-*/	D03 Retro Design Steel Standard Flow Parallel Bar Manifold - 2 1/8" Spacing	52	13
BMR-SSP03*4-**-*/	D03 Retro Design Steel Standard Flow Parallel Bar Manifold - 4" Spacing	52	13
BM-SHP05*3-**-*/	D05 Steel High Flow Parallel Bar Manifold - 3 1/4" Spacing	60	16
BM-SHP05*5-**-*/	D05 Steel High Flow Parallel Bar Manifold - 5" Spacing	60	16
BM-SHP5E*3-**-*/	D05 E Alt A Steel High Flow Parallel Bar Manifold - 3 1/4" Spacing	62	17
BM-SHP5E*5-**-*/	D05 E Alt A Steel High Flow Parallel Bar Manifold - 5" Spacing	62	17
BM-SHP5H*3-**-*/	D05 H Alt B Steel High Flow Parallel Bar Manifold - 3 1/4" Spacing	64	17
BM-SHP5H*5-**-*/	D05 H Alt B Steel High Flow Parallel Bar Manifold - 5" Spacing	64	17
BM-SSP03*2-**-*/	D03 Steel Standard Flow Parallel Bar Manifold - 2" Spacing	48	11
BM-SSP03*4-**-*/	D03 Steel Standard Flow Parallel Bar Manifold - 4" Spacing	48	11
BM-SSP05*3-**-*/	D05 Steel Standard Flow Parallel Bar Manifold - 3 1/4" Spacing	56	15
BM-SSP05*5-**-*/	D05 Steel Standard Flow Parallel Bar Manifold - 5" Spacing	56	15
BM-SSP08*5-**-*/	D08 Steel Standard Flow Parallel Bar Manifold - 5 1/4" Spacing	66	18
BM-SSP08*7-**-*/	D08 Steel Standard Flow Parallel Bar Manifold - 7" Spacing	66	18
BM-SSS03*2-**-*/	D03 Steel Standard Flow Series Bar Manifold - 2" Spacing	50	12
BM-SSS05*3-**-*/	D05 Steel Standard Flow Series Bar Manifold - 3 1/4" Spacing	58	15
BM-SSS05*5-**-*/	D05 Steel Standard Flow Series Bar Manifold - 5" Spacing	58	15
BM-SSS08*7-**-*/	D08 Steel Standard Flow Series Bar Manifold - 7" Spacing	70	19
CP-ASP03E-1/G	D03 Aluminum Parallel Flow Cover Plate w/Gauge Ports	86	23
CP-ASP03E-1/Z	D03 Aluminum Parallel Flow Cover Plate	86	23
CP-ASP05E-1/G	D05 Aluminum Parallel Flow Cover Plate w/Gauge Ports	88	23
CP-ASP05E-1/Z	D05 Aluminum Parallel Flow Cover Plate	88	23
CP-ASP08E-1/G	D08 Aluminum Parallel Flow Cover Plate w/Gauge Ports	90	23
CP-ASP08E-1/Z	D08 Aluminum Parallel Flow Cover Plate	90	23
CP-ASS03E-1/Z	D03 Aluminum Series Flow Cover Plate	87	23
CP-ASS05E-1/Z	D05 Aluminum Series Flow Cover Plate	89	23
CP-ASS08E-1/Z	D08 Aluminum Series Flow Cover Plate	91	23
CP-SSP03E-1/G	D03 Steel Parallel Flow Cover Plate w/Gauge Ports	86	23
CP-SSP03E-1/Z	D03 Steel Parallel Flow Cover Plate	86	23
CP-SSP05E-1/G	D05 Steel Parallel Flow Cover Plate w/Gauge Ports	88	23
CP-SSP05E-1/Z	D05 Steel Parallel Flow Cover Plate	88	23
CP-SSP08E-1/G	D08 Steel Parallel Flow Cover Plate w/Gauge Ports	90	23
CP-SSP08E-1/Z	D08 Steel Parallel Flow Cover Plate	90	23
CP-SSS03E-1/Z	D03 Steel Series Flow Cover Plate	87	23
CP-SSS05E-1/Z	D05 Steel Series Flow Cover Plate	89	23
CP-SSS08E-1/Z	D08 Steel Series Flow Cover Plate	91	23
CSFE-003-069	Spin-On Filter Cellulose Media Element, 3 Micron, 1 1/2-16 UN Mounting Thread, 6.9" Length	167	42
CSFE-003-109	Spin-On Filter Cellulose Media Element, 3 Micron, 1 1/2-16 UN Mounting Thread, 10.9" Length	167	42
CSFE-003-109/WA	Spin-On Filter Cellulose Media Element, 3 Micron, 1 1/2-16 UN Mounting Thread, 10.9" Length, Water Absorbing	167	42
CSFE-010-069	Spin-On Filter Cellulose Media Element, 10 Micron, 1 1/2-16 UN Mounting Thread, 6.9" Length	167	42
CSFE-010-109	Spin-On Filter Cellulose Media Element, 10 Micron, 1 1/2-16 UN Mounting Thread, 10.9" Length	167	42
CSFE-010-109/WA	Spin-On Filter Cellulose Media Element, 10 Micron, 1 1/2-16 UN Mounting Thread, 10.9" Length, Water Absorbing	167	42
CSFE-025-069	Spin-On Filter Cellulose Media Element, 25 Micron, 1 1/2-16 UN Mounting Thread, 6.9" Length	167	42
CSFE-025-109	Spin-On Filter Cellulose Media Element, 25 Micron, 1 1/2-16 UN Mounting Thread, 10.9" Length	167	42
CSFE-141-069	Spin-On Filter Cellulose Media Element, 141 Micron, 1 1/2-16 UN Mounting Thread, 6.9" Length	167	42
CSFE-141-109	Spin-On Filter Cellulose Media Element, 141 Micron, 1 1/2-16 UN Mounting Thread, 10.9" Length	167	42
CTTE-ASR-003-092-BD	Tank Top Filter Cellulose Media Element for AI S/R Line Series, 3 Micron, 9.19" Length, Bi-Directional Flow	172	44
CTTE-ASR-003-092-OI/WA	Tank Top Filter Cellulose Media Element for AI S/R Line Series, 3 Micron, 9.19" Length, Water Absorbing, O/I Flow	172	44
CTTE-ASR-010-092-BD	Tank Top Filter Cellulose Media Element for AI S/R Line Series, 10 Micron, 9.19" Length, Bi-Directional Flow	172	44
CTTE-ASR-010-182-BD	Tank Top Filter Cellulose Media Element for AI S/R Line Series, 10 Micron, 18.19" Length, Bi-Directional Flow	172	44
CTTE-ASR-025-092-BD	Tank Top Filter Cellulose Media Element for AI S/R Line Series, 25 Micron, 9.19" Length, Bi-Directional Flow	172	44
CTTE-ASR-025-182-BD	Tank Top Filter Cellulose Media Element for AI S/R Line Series, 25 Micron, 18.19" Length, Bi-Directional Flow	172	44
CTTE-ASR-100-092-OI	Tank Top Filter Cellulose Media Element for AI S/R Line Series, 100 Micron, 9.19" Length, I/O Flow	172	44
CTTE-ASR-100-092-OI/M	Tank Top Filter Cellulose Media Element for AI S/R Line Series, 100 Micron, 9.19" Length, I/O Flow, Magnetic	172	44
CTTE-ASR-100-092-OI	Tank Top Filter Cellulose Media Element for AI S/R Line Series, 100 Micron, 9.19" Length, O/I Flow	172	44
CTTE-ASR-100-092-OI/M	Tank Top Filter Cellulose Media Element for AI S/R Line Series, 100 Micron, 9.19" Length, O/I Flow, Magnetic	172	44
CTTE-ASR-100-182-OI	Tank Top Filter Cellulose Media Element for Series, 100 Micron, 18.19" Length, O/I Flow	172	44
CTTE-ITB-03N	Tank Top Filter Cellulose Media Element for Integral Breather Series, 3 Micron	169	43
CTTE-ITB-10N	Tank Top Filter Cellulose Media Element for Integral Breather Series, 10 Micron	169	43
CTTE-ITB-25N	Tank Top Filter Cellulose Media Element for Integral Breather Series, 25 Micron	169	43
E575**100M	5.75" Pilot Engine Mount to Metric 100mm Pump	30	7
E575**2A	5.75" Pilot Engine Mount to SAE A Pump	30	7
E575**2AA	5.75" Pilot Engine Mount to SAE 2AA Pump	30	7
E575**2B	5.75" Pilot Engine Mount to SAE B Pump	30	7
E575**4F	5.75" Pilot Engine Mount to USA4F17 Pump	30	7
E575**63M	5.75" Pilot Engine Mount to Metric 63mm Pump	30	7
E575**63MS	5.75" Pilot Engine Mount to Metric 63mm Special Pump	30	7



What is it, Where is it Index

Part Number	Description	Catlg Page	Price Page
65731 810A1	5.75" Pilot Engine About to Metric 80mm Pump	39	7
65731 810A5	5.75" Pilot Engine About to Metric 80mm Special Pump	39	7
65441 010A1	6.44" Pilot Engine About to Metric 100mm Pump	39	7
65441 0123A1	6.44" Pilot Engine About to Metric 125mm Pump	39	7
65441 02A	6.44" Pilot Engine About to SAE A Pump	39	7
65441 02AA	6.44" Pilot Engine About to SAE 2AA Pump	39	7
65441 02B	6.44" Pilot Engine About to SAE B Pump	39	7
65441 02C	6.44" Pilot Engine About to SAE C Pump	39	7
65441 04F	6.44" Pilot Engine About to USA 4F07 Pump	39	7
65441 053A1	6.44" Pilot Engine About to Metric 65mm Pump	39	7
65441 053A5	6.44" Pilot Engine About to Metric 65mm Special Pump	39	7
65441 810A1	6.44" Pilot Engine About to Metric 80mm Pump	39	7
65441 810A5	6.44" Pilot Engine About to Metric 80mm Special Pump	39	7
67001 010A1	7.00" Pilot Engine About to Metric 100mm Pump	39	7
67001 0123A1	7.00" Pilot Engine About to Metric 125mm Pump	39	7
67001 02A	7.00" Pilot Engine About to SAE A Pump	39	7
67001 02AA	7.00" Pilot Engine About to SAE 2AA Pump	39	7
67001 02B	7.00" Pilot Engine About to SAE B Pump	39	7
67001 02C	7.00" Pilot Engine About to SAE C Pump	39	7
67001 04F	7.00" Pilot Engine About to USA 4F07 Pump	39	7
67001 053A1	7.00" Pilot Engine About to Metric 65mm Pump	39	7
67001 053A5	7.00" Pilot Engine About to Metric 65mm Special Pump	39	7
67001 810A1	7.00" Pilot Engine About to Metric 80mm Pump	39	7
67001 810A5	7.00" Pilot Engine About to Metric 80mm Special Pump	39	7
67871 010A1	7.87" Pilot Engine About to Metric 100mm Pump	39	7
67871 0123A1	7.87" Pilot Engine About to Metric 125mm Pump	39	7
67871 02A	7.87" Pilot Engine About to SAE A Pump	39	7
67871 02B	7.87" Pilot Engine About to SAE B Pump	39	7
67871 02C	7.87" Pilot Engine About to SAE C Pump	39	7
67871 053A1	7.87" Pilot Engine About to Metric 65mm Pump	39	7
67871 053A5	7.87" Pilot Engine About to Metric 65mm Special Pump	39	7
67871 810A1	7.87" Pilot Engine About to Metric 80mm Pump	39	7
67871 810A5	7.87" Pilot Engine About to Metric 80mm Special Pump	39	7
88-A008P	Filter Breather Assembly, A Cng, 1/2" Mounting Flange, P Screen	148	38
88-A008H	Filter Breather Assembly, A Cng, 1/2" Mounting Flange, H Screen	148	38
88-C-0000	Filter Breather Cng w/100 mesh of 100 Length	147	38
88-C-A	Filter Breather Cng, A Cng	147	38
88-C-D	Filter Breather Cng, D Cng	147	38
88-C-H	Filter Breather Cng, H Cng	147	38
88-C-K	Filter Breather Cng, K Cng	147	38
88-CA18-0004	Filter Breather Cng, Mini Cng, 1/8 NPT	147	38
88-CA18-0006	Filter Breather Cng, Mini Cng, 3/8 NPT	147	38
88-CA18-0008	Filter Breather Cng, Mini Cng, 1/2 NPT	147	38
88-CA18-0012	Filter Breather Cng, Mini Cng, 3/4 NPT	147	38
88-F-008	Filter Breather Mounting Flange: 1/2"	147	38
88-F-008	Filter Breather Mounting Flange: 1 1/2"	147	38
88-F-500	Filter Breather Mounting Flange: 5"	147	38
88-K008H	Filter Breather Assembly, K Cng, 1/2" Mounting Flange, w Screen	148	38
88-OL	Filter Breather Cng LockGr.	148	38
88-OL	Filter Breather Pad Lock for Cng Lock Gr. (not included with 88-OL)	148	38
88-OS-1	Filter Breather Side Mounting Kit.	148	38
88S-0002-002P	NPT Style Filter Breather Spin-On Adapter, 1-12 UN x 3/4 NPT	146	38
88S-0002-B	Bayonet Style Filter Breather Spin-On Adapter, 1-12 UN	146	38
88S-00205-002P	NPT Style Filter Breather Spin-On Adapter, 1 1/8-16 UN x 3/4 NPT	146	38
88S-00205-B	Bayonet Style Filter Breather Spin-On Adapter, 1 1/8-16 UN	146	38
88S-00805-008P	NPT Style Filter Breather Spin-On Adapter, 1 1/2-16 UN x 1 1/4 NPT	146	38
88S-00805-B	Bayonet Style Filter Breather Spin-On Adapter, 1 1/2-16 UN	146	38
88S-00805-F	Flange Style Filter Breather Spin-On Adapter, 1 1/2-16 UN	146	38
88S-00805-PS	Flange Style Filter Breather Spin-On Adapter, 1 1/2-16 UN w/ Gauge Prot.	146	38
88-S-C06	Filter Breather Screen, C Screen, 16 Mesh, Stainless Steel x 3"	147	38
88-S-H	Filter Breather Screen, H Screen, 20 Mesh, Brass x 5"	147	38
88-S-P	Filter Breather Screen, P Screen, 30 Mesh, Nylon x 4"	147	38
88-S-R	Filter Breather Screen, R Screen, 30 Mesh, Brass x 4"	147	38
88-S-V	Filter Breather Screen, V Screen, 30 Mesh, Brass x 3 1/4"	147	38
88-S-X	Filter Breather Screen, X Screen, 30 Mesh, Stainless Steel x 3 1/2"	147	38
88-S-Y	Filter Breather Screen, Y Screen, 30 Mesh, Stainless Steel x 3 1/2"	147	38
88-S-Z	Filter Breather Screen, Z Screen, 30 Mesh, Stainless Steel x 3 1/4"	148	38
88-008	008 Manifold Mounting Kit.	208	11

What is it, Where is it Index



Part Number	Description	Catag Page	Price Page
E575**80M	5.75" Pilot Engine Mount to Metric 80mm Pump	30	7
E575**80MS	5.75" Pilot Engine Mount to Metric 80mm Special Pump	30	7
E644**100M	6.44" Pilot Engine Mount to Metric 100mm Pump	31	7
E644**125M	6.44" Pilot Engine Mount to Metric 125mm Pump	31	7
E644**2A	6.44" Pilot Engine Mount to SAE A Pump	31	7
E644**2AA	6.44" Pilot Engine Mount to SAE 2AA Pump	31	7
E644**2B	6.44" Pilot Engine Mount to SAE B Pump	31	7
E644**2C	6.44" Pilot Engine Mount to SAE C Pump	31	7
E644**4F	6.44" Pilot Engine Mount to USA4F17 Pump	31	7
E644**63M	6.44" Pilot Engine Mount to Metric 63mm Pump	31	7
E644**63MS	6.44" Pilot Engine Mount to Metric 63mm Special Pump	31	7
E644**80M	6.44" Pilot Engine Mount to Metric 80mm Pump	31	7
E644**80MS	6.44" Pilot Engine Mount to Metric 80mm Special Pump	31	7
E700**100M	7.00" Pilot Engine Mount to Metric 100mm Pump	32	7
E700**125M	7.00" Pilot Engine Mount to Metric 125mm Pump	32	7
E700**2A	7.00" Pilot Engine Mount to SAE A Pump	32	7
E700**2AA	7.00" Pilot Engine Mount to SAE 2AA Pump	32	7
E700**2B	7.00" Pilot Engine Mount to SAE B Pump	32	7
E700**2C	7.00" Pilot Engine Mount to SAE C Pump	32	7
E700**4F	7.00" Pilot Engine Mount to USA4F17 Pump	32	7
E700**63M	7.00" Pilot Engine Mount to Metric 63mm Pump	32	7
E700**63MS	7.00" Pilot Engine Mount to Metric 63mm Special Pump	32	7
E700**80M	7.00" Pilot Engine Mount to Metric 80mm Pump	32	7
E700**80MS	7.00" Pilot Engine Mount to Metric 80mm Special Pump	32	7
E787**100M	7.87" Pilot Engine Mount to Metric 100mm Pump	32	7
E787**125M	7.87" Pilot Engine Mount to Metric 125mm Pump	32	7
E787**2A	7.87" Pilot Engine Mount to SAE A Pump	32	7
E787**2B	7.87" Pilot Engine Mount to SAE B Pump	32	7
E787**2C	7.87" Pilot Engine Mount to SAE C Pump	32	7
E787**63M	7.87" Pilot Engine Mount to Metric 63mm Pump	32	7
E787**63MS	7.87" Pilot Engine Mount to Metric 63mm Special Pump	32	7
E787**80M	7.87" Pilot Engine Mount to Metric 80mm Pump	32	7
E787**80MS	7.87" Pilot Engine Mount to Metric 80mm Special Pump	32	7
FB-A008P	Filler Breather Assembly, A Cap, 1/2" Mounting Flange, P Screen	148	38
FB-A008W	Filler Breather Assembly, A Cap, 1/2" Mounting Flange, W Screen	148	38
FB-C-*D**	Filler Breather Cap w/Dipstick of XX Length	147	38
FB-C-A	Filler Breather Cap, A Cap	147	38
FB-C-D	Filler Breather Cap, D Cap	147	38
FB-C-H	Filler Breather Cap, H Cap	147	38
FB-C-K	Filler Breather Cap, K Cap	147	38
FB-C-MB-P004	Filler Breather Cap, Mini Cap, 1/4 NPT	147	38
FB-C-MB-P006	Filler Breather Cap, Mini Cap, 3/8 NPT	147	38
FB-C-MB-P008	Filler Breather Cap, Mini Cap, 1/2 NPT	147	38
FB-C-MB-P012	Filler Breather Cap, Mini Cap, 3/4 NPT	147	38
FB-F-008	Filler Breather Mounting Flange x 1/2"	147	38
FB-F-108	Filler Breather Mounting Flange x 1 1/2"	147	38
FB-F-600	Filler Breather Mounting Flange x 6"	147	38
FB-K008W	Filler breather Assembly, K Cap, 1/2" Mounting Flange, w Screen	148	38
FB-O-L	Filler Breather Cap Lock Kit	148	38
FB-O-PL	Filler Breather Pad Lock for Cap Lock Kit (not included with FB-O-L)	148	38
FB-O-SM	Filler Breather Side Mounting Kit	148	38
FBS-10012-012P	NPT Style Filler Breather Spin-On Adapter, 1-12 UN x 3/4 NPT	146	38
FBS-10012-B	Bayonet Style Filler Breather Spin-On Adapter, 1-12 UN	146	38
FBS-10216-012P	NPT Style Filler Breather Spin-On Adapter, 1 1/8-16 UN x 3/4 NPT	146	38
FBS-10216-B	Bayonet Style Filler Breather Spin-On Adapter, 1 1/8-16 UN	146	38
FBS-10816-104P	NPT Style Filler Breather Spin-On Adapter, 1 1/2-16 UN x 1 1/4 NPT	146	38
FBS-10816-B	Bayonet Style Filler Breather Spin-On Adapter, 1 1/2-16 UN	146	38
FBS-10816-F	Flange Style Filler Breather Spin-On Adapter, 1 1/2-16 UN	146	38
FBS-10816-FG	Flange Style Filler Breather Spin-On Adapter, 1 1/2-16 UN w/Gauge Port	146	38
FB-S-C16	Filler Breather Screen, C Screen, 16 Mesh, Stainless Steel x 3"	147	38
FB-S-N	Filler Breather Screen, N Screen, 200 Mesh, Brass x 6"	147	38
FB-S-P	Filler Breather Screen, P Screen, 30 Mesh, Nylon x 4"	147	38
FB-S-R	Filler Breather Screen, R Screen, 30 Mesh, Brass x 4"	147	38
FB-S-V	Filler Breather Screen, V Screen, 30 Mesh, Brass x 9 1/4"	147	38
FB-S-W	Filler Breather Screen, W Screen, 30 Mesh, Stainless Steel x 3 1/4"	147	38
FB-S-X	Filler Breather Screen, X Screen, 30 Mesh, Stainless Steel x 6 1/4"	147	38
FB-S-Y	Filler Breather Screen, Y Screen, 30 Mesh, Stainless Steel x 8 1/4"	147	38
FB-S-Z	Filler Breather Screen, Z Screen, 30 Mesh, Stainless Steel x 10 1/4"	148	38



What is it, Where is it Index

Part Number	Description	Catag Page	Price Page
FK-A03	D03 Manifold Mounting Kit	203	11
FK-A05	D05 Manifold Mounting Kit	203	15
GI-01-NPT	Gauge Isolator, Single Statios, 1/4" NPT Port	176	45
GI-01-SAE	Gauge Isolator, Single Station, #4 SAE Port	176	45
GI-06-SAE	Gauge Isolator, Six Station, #4 SAE Port	176	45
HA-0002P/01P-**-1/2	Header Manifold, 0 Degree Aluminum, 1/8 NPT End Ports x 1/16 NPT Side Ports	107	26
HA-0002P/02P-**-1/2	Header Manifold, 0 Degree Aluminum, 1/8 NPT End Ports x 1/8 NPT Side Ports	107	26
HA-0004*/04***-1/2	Header Manifold, 0 Degree Aluminum, Size 4 End Ports x Size 4 Side Ports	108	26
HA-0004P/02P-**-1/2	Header Manifold, 0 Degree Aluminum, 1/4 NPT End Ports x 1/8 NPT Side Ports	107	26
HA-0006*/02P-**-1/2	Header Manifold, 0 Degree Aluminum, Size 6 End Ports x 1/8 NPT Side Ports	107	26
HA-0006*/04***-1/2	Header Manifold, 0 Degree Aluminum, Size 6 End Ports x Size 4 Side Ports	108	26
HA-0006*/06***-1/2	Header Manifold, 0 Degree Aluminum, Size 6 End Ports x Size 6 Side Ports	109	26
HA-0008*/04***-1/2	Header Manifold, 0 Degree Aluminum, Size 8 End Ports x Size 4 Side Ports	108	26
HA-0008*/06***-1/2	Header Manifold, 0 Degree Aluminum, Size 8 End Ports x Size 6 Side Ports	109	26
HA-0008*/08***-1/2	Header Manifold, 0 Degree Aluminum, Size 8 End Ports x Size 8 Side Ports	110	26
HA-0012*/06***-1/2	Header Manifold, 0 Degree Aluminum, Size 12 End Ports x Size 6 Side Ports	109	26
HA-0012*/08***-1/2	Header Manifold, 0 Degree Aluminum, Size 12 End Ports x Size 8 Side Ports	110	26
HA-0012*/12***-1/2	Header Manifold, 0 Degree Aluminum, Size 12 End Ports x Size 12 Side Ports	110	26
HA-0016*/08***-1/2	Header Manifold, 0 Degree Aluminum, Size 16 End Ports x Size 8 Side Ports	110	26
HA-0016*/12***-1/2	Header Manifold, 0 Degree Aluminum, Size 16 End Ports x Size 12 Side Ports	110	26
HA-0016*/16***-1/2	Header Manifold, 0 Degree Aluminum, Size 16 End Ports x Size 16 Side Ports	111	26
HA-0020*/12***-1/2	Header Manifold, 0 Degree Aluminum, Size 20 End Ports x Size 12 Side Ports	110	26
HA-0020*/16***-1/2	Header Manifold, 0 Degree Aluminum, Size 20 End Ports x Size 16 Side Ports	111	26
HA-0020*/20***-1/2	Header Manifold, 0 Degree Aluminum, Size 20 End Ports x Size 20 Side Ports	111	26
HA-0024*/16***-1/2	Header Manifold, 0 Degree Aluminum, Size 40 End Ports x Size 16 Side Ports	111	26
HA-0024*/20***-1/2	Header Manifold, 0 Degree Aluminum, Size 24 End Ports x Size 20 Side Ports	111	26
HA-0024*/24***-1/2	Header Manifold, 0 Degree Aluminum, Size 24 End Ports x Size 24 Side Ports	111	26
HA-0032*/24***-1/2	Header Manifold, 0 Degree Aluminum, Size 32 End Ports x Size 24 Side Ports	111	26
HA-0902P/01P-**-1/2	Header Manifold, 90 Degree Aluminum, 1/8 NPT End Ports x 1/16 NPT Side Ports	107	27
HA-0902P/02P-**-1/2	Header Manifold, 90 Degree Aluminum, 1/8 NPT End Ports x 1/8 NPT Side Ports	107	27
HA-0904*/04***-1/2	Header Manifold, 90 Degree Aluminum, Size 4 End Ports x Size 4 Side Ports	108	27
HA-0904P/02P-**-1/2	Header Manifold, 90 Degree Aluminum, 1/4 NPT End Ports x 1/8 NPT Side Ports	107	27
HA-0906*/02P-**-1/2	Header Manifold, 90 Degree Aluminum, Size 6 End Ports x 1/8 NPT Side Ports	107	27
HA-0906*/04***-1/2	Header Manifold, 90 Degree Aluminum, Size 6 End Ports x Size 4 Side Ports	108	27
HA-0906*/06***-1/2	Header Manifold, 90 Degree Aluminum, Size 6 End Ports x Size 6 Side Ports	109	27
HA-0908*/04***-1/2	Header Manifold, 90 Degree Aluminum, Size 8 End Ports x Size46 Side Ports	108	27
HA-0908*/06***-1/2	Header Manifold, 90 Degree Aluminum, Size 8 End Ports x Size68 Side Ports	109	27
HA-0908*/08***-1/2	Header Manifold, 90 Degree Aluminum, Size 8 End Ports x Size 8 Side Ports	110	27
HA-0912*/06***-1/2	Header Manifold, 90 Degree Aluminum, Size 12 End Ports x Size 6 Side Ports	109	27
HA-0912*/08***-1/2	Header Manifold, 90 Degree Aluminum, Size 12 End Ports x Size 8 Side Ports	110	27
HA-0912*/12***-1/2	Header Manifold, 90 Degree Aluminum, Size 12 End Ports x Size 12 Side Ports	110	27
HA-0916*/08***-1/2	Header Manifold, 90 Degree Aluminum, Size 16 End Ports x Size 8 Side Ports	110	27
HA-0916*/12***-1/2	Header Manifold, 90 Degree Aluminum, Size 16 End Ports x Size 12 Side Ports	110	27
HA-0916*/16***-1/2	Header Manifold, 90 Degree Aluminum, Size 16 End Ports x Size 16 Side Ports	111	27
HA-0920*/12***-1/2	Header Manifold, 90 Degree Aluminum, Size 20 End Ports x Size 12 Side Ports	110	27
HA-0920*/16***-1/2	Header Manifold, 90 Degree Aluminum, Size 20 End Ports x Size 16 Side Ports	111	27
HA-0920*/20***-1/2	Header Manifold, 90 Degree Aluminum, Size 20 End Ports x Size 20 Side Ports	111	27
HA-0924*/16***-1/2	Header Manifold, 90 Degree Aluminum, Size 24 End Ports x Size 16 Side Ports	111	27
HA-0924*/20***-1/2	Header Manifold, 90 Degree Aluminum, Size 24 End Ports x Size 20 Side Ports	111	27
HA-0924*/24***-1/2	Header Manifold, 90 Degree Aluminum, Size 24 End Ports x Size 24 Side Ports	111	27
HA-0932*/24***-1/2	Header Manifold, 90 Degree Aluminum, Size 32 End Ports x Size 24 Side Ports	111	27
HA-1802P/01P-**-1/2	Header Manifold, 180 Degree Aluminum, 1/8 NPT End Ports x 1/16 NPT Side Ports	107	28
HA-1802P/02P-**-1/2	Header Manifold, 180 Degree Aluminum, 1/8 NPT End Ports x 1/8 NPT Side Ports	107	28
HA-1804*/04***-1/2	Header Manifold, 180 Degree Aluminum, Size 4 End Ports x Size 4 Side Ports	108	28
HA-1804P/02P-**-1/2	Header Manifold, 180 Degree Aluminum, 1/4 NPT End Ports x 1/8 NPT Side Ports	107	28
HA-1806*/02P-**-1/2	Header Manifold, 180 Degree Aluminum, Size 6 End Ports x 1/8 NPT Side Ports	107	28
HA-1806*/04***-1/2	Header Manifold, 180 Degree Aluminum, Size 6 End Ports x Size 4 Side Ports	108	28
HA-1806*/06***-1/2	Header Manifold, 180 Degree Aluminum, Size 6 End Ports x Size 6 Side Ports	109	28
HA-1808*/04***-1/2	Header Manifold, 180 Degree Aluminum, Size 8 End Ports x Size 4 Side Ports	108	28
HA-1808*/06***-1/2	Header Manifold, 180 Degree Aluminum, Size 8 End Ports x Size 6 Side Ports	109	28
HA-1808*/08***-1/2	Header Manifold, 180 Degree Aluminum, Size 8 End Ports x Size 8 Side Ports	110	28
HA-1812*/06***-1/2	Header Manifold, 180 Degree Aluminum, Size 12 End Ports x Size 6 Side Ports	109	28
HA-1812*/08***-1/2	Header Manifold, 180 Degree Aluminum, Size 12 End Ports x Size 8 Side Ports	110	28
HA-1812*/12***-1/2	Header Manifold, 180 Degree Aluminum, Size 12 End Ports x Size 12 Side Ports	110	28
HA-1816*/08***-1/2	Header Manifold, 180 Degree Aluminum, Size 16 End Ports x Size 8 Side Ports	110	28
HA-1816*/12***-1/2	Header Manifold, 180 Degree Aluminum, Size 16 End Ports x Size 12 Side Ports	110	28
HA-1816*/16***-1/2	Header Manifold, 180 Degree Aluminum, Size 16 End Ports x Size 16 Side Ports	111	28
HA-1820*/12***-1/2	Header Manifold, 180 Degree Aluminum, Size 20 End Ports x Size 12 Side Ports	110	28

What is it, Where is it Index



Part Number	Description	Catag Page	Price Page
HA-1820*/16*.-.-1/Z	Header Manifold, 180 Degree Aluminum, Size 20 End Ports x Size 16 Side Ports	111	28
HA-1820*/20*.-.-1/Z	Header Manifold, 180 Degree Aluminum, Size 20 End Ports x Size 20 Side Ports	111	28
HA-1824*/16*.-.-1/Z	Header Manifold, 180 Degree Aluminum, Size 24 End Ports x Size 16 Side Ports	111	28
HA-1824*/20*.-.-1/Z	Header Manifold, 180 Degree Aluminum, Size 24 End Ports x Size 20 Side Ports	111	28
HA-1824*/24*.-.-1/Z	Header Manifold, 180 Degree Aluminum, Size 24 End Ports x Size 24 Side Ports	111	28
HA-1832*/24*.-.-1/Z	Header Manifold, 180 Degree Aluminum, Size 32 End Ports x Size 24 Side Ports	111	28
HS-0002P/01P*.-.-1/Z	Header Manifold, 0 Degree Steel, 1/8 NPT End Ports x 1/16 NPT Side Ports	107	26
HS-0002P/02P*.-.-1/Z	Header Manifold, 0 Degree Steel, 1/8 NPT End Ports x 1/8 NPT Side Ports	107	26
HS-0004*/04*.-.-1/Z	Header Manifold, 0 Degree Steel, Size 4 End Ports x Size 4 Side Ports	108	26
HS-0004P/02P*.-.-1/Z	Header Manifold, 0 Degree Steel, 1/4 NPT End Ports x 1/8 NPT Side Ports	107	26
HS-0006*/02P*.-.-1/Z	Header Manifold, 0 Degree Steel, Size 6 End Ports x 1/8 NPT Side Ports	107	26
HS-0006*/04*.-.-1/Z	Header Manifold, 0 Degree Steel, Size 6 End Ports x Size 4 Side Ports	108	26
HS-0006*/06*.-.-1/Z	Header Manifold, 0 Degree Steel, Size 6 End Ports x Size 6 Side Ports	109	26
HS-0008*/04*.-.-1/Z	Header Manifold, 0 Degree Steel, Size 8 End Ports x Size 4 Side Ports	108	26
HS-0008*/06*.-.-1/Z	Header Manifold, 0 Degree Steel, Size 8 End Ports x Size 6 Side Ports	109	26
HS-0008*/08*.-.-1/Z	Header Manifold, 0 Degree Steel, Size 8 End Ports x Size 8 Side Ports	110	26
HS-0012*/06*.-.-1/Z	Header Manifold, 0 Degree Steel, Size 12 End Ports x Size 6 Side Ports	109	26
HS-0012*/08*.-.-1/Z	Header Manifold, 0 Degree Steel, Size 12 End Ports x Size 8 Side Ports	110	26
HS-0012*/12*.-.-1/Z	Header Manifold, 0 Degree Steel, Size 12 End Ports x Size 12 Side Ports	110	26
HS-0016*/08*.-.-1/Z	Header Manifold, 0 Degree Steel, Size 16 End Ports x Size 8 Side Ports	110	26
HS-0016*/12*.-.-1/Z	Header Manifold, 0 Degree Steel, Size 16 End Ports x Size 12 Side Ports	110	26
HS-0016*/16*.-.-1/Z	Header Manifold, 0 Degree Steel, Size 16 End Ports x Size 16 Side Ports	111	26
HS-0020*/12*.-.-1/Z	Header Manifold, 0 Degree Steel, Size 20 End Ports x Size 12 Side Ports	110	26
HS-0020*/16*.-.-1/Z	Header Manifold, 0 Degree Steel, Size 20 End Ports x Size 16 Side Ports	111	26
HS-0020*/20*.-.-1/Z	Header Manifold, 0 Degree Steel, Size 20 End Ports x Size 20 Side Ports	111	26
HS-0024*/16*.-.-1/Z	Header Manifold, 0 Degree Steel, Size 24 End Ports x Size 16 Side Ports	111	26
HS-0024*/20*.-.-1/Z	Header Manifold, 0 Degree Steel, Size 24 End Ports x Size 20 Side Ports	111	26
HS-0024*/24*.-.-1/Z	Header Manifold, 0 Degree Steel, Size 24 End Ports x Size 24 Side Ports	111	26
HS-0032*/24*.-.-1/Z	Header Manifold, 0 Degree Steel, Size 32 End Ports x Size 24 Side Ports	111	26
HS-0902P/01P*.-.-1/Z	Header Manifold, 90 Degree Steel, 1/8 NPT End Ports x 1/16 NPT Side Ports	107	27
HS-0902P/02P*.-.-1/Z	Header Manifold, 90 Degree Steel, 1/8 NPT End Ports x 1/8 NPT Side Ports	107	27
HS-0904*/04*.-.-1/Z	Header Manifold, 90 Degree Steel, Size 4 End Ports x Size 4 Side Ports	108	27
HS-0904P/02P*.-.-1/Z	Header Manifold, 90 Degree Steel, Size 4 End Ports x 1/8 NPT Side Ports	107	27
HS-0906*/02P*.-.-1/Z	Header Manifold, 90 Degree Steel, Size 6 End Ports x 1/8 NPT Side Ports	107	27
HS-0906*/04*.-.-1/Z	Header Manifold, 90 Degree Steel, Size 6 End Ports x Size 4 Side Ports	108	27
HS-0906*/06*.-.-1/Z	Header Manifold, 90 Degree Steel, Size 6 End Ports x Size 6 Side Ports	109	27
HS-0908*/04*.-.-1/Z	Header Manifold, 90 Degree Steel, Size 8 End Ports x Size 4 Side Ports	108	27
HS-0908*/06*.-.-1/Z	Header Manifold, 90 Degree Steel, Size 8 End Ports x Size 6 Side Ports	109	27
HS-0908*/08*.-.-1/Z	Header Manifold, 90 Degree Steel, Size 8 End Ports x Size 8 Side Ports	110	27
HS-0912*/06*.-.-1/Z	Header Manifold, 90 Degree Steel, Size 12 End Ports x Size 6 Side Ports	109	27
HS-0912*/08*.-.-1/Z	Header Manifold, 90 Degree Steel, Size 12 End Ports x Size 8 Side Ports	110	27
HS-0912*/12*.-.-1/Z	Header Manifold, 90 Degree Steel, Size 12 End Ports x Size 12 Side Ports	110	27
HS-0916*/08*.-.-1/Z	Header Manifold, 90 Degree Steel, Size 16 End Ports x Size 8 Side Ports	110	27
HS-0916*/12*.-.-1/Z	Header Manifold, 90 Degree Steel, Size 16 End Ports x Size 12 Side Ports	110	27
HS-0916*/16*.-.-1/Z	Header Manifold, 90 Degree Steel, Size 16 End Ports x Size 16 Side Ports	111	27
HS-0920*/12*.-.-1/Z	Header Manifold, 90 Degree Steel, Size 20 End Ports x Size 12 Side Ports	110	27
HS-0920*/16*.-.-1/Z	Header Manifold, 90 Degree Steel, Size 20 End Ports x Size 16 Side Ports	111	27
HS-0920*/20*.-.-1/Z	Header Manifold, 90 Degree Steel, Size 20 End Ports x Size 20 Side Ports	111	27
HS-0924*/16*.-.-1/Z	Header Manifold, 90 Degree Steel, Size 24 End Ports x Size 16 Side Ports	111	27
HS-0924*/20*.-.-1/Z	Header Manifold, 90 Degree Steel, Size 24 End Ports x Size 20 Side Ports	111	27
HS-0924*/24*.-.-1/Z	Header Manifold, 90 Degree Steel, Size 24 End Ports x Size 24 Side Ports	111	27
HS-0932*/24*.-.-1/Z	Header Manifold, 90 Degree Steel, Size 32 End Ports x Size 24 Side Ports	111	27
HS-1802P/01P*.-.-1/Z	Header Manifold, 180 Degree Steel, 1/8 NPT End Ports x 1/16 NPT Side Ports	107	28
HS-1802P/02P*.-.-1/Z	Header Manifold, 180 Degree Steel, 1/8 NPT End Ports x 1/8 NPT Side Ports	107	28
HS-1804*/04*.-.-1/Z	Header Manifold, 180 Degree Steel, Size 4 End Ports x Size 4 Side Ports	108	28
HS-1804P/02P*.-.-1/Z	Header Manifold, 180 Degree Steel, 1/4 NPT End Ports x 1/8 NPT Side Ports	107	28
HS-1806*/02P*.-.-1/Z	Header Manifold, 180 Degree Steel, Size 6 End Ports x 1/8 NPT Side Ports	107	28
HS-1806*/04*.-.-1/Z	Header Manifold, 180 Degree Steel, Size 6 End Ports x Size 4 Side Ports	108	28
HS-1806*/06*.-.-1/Z	Header Manifold, 180 Degree Steel, Size 6 End Ports x Size 6 Side Ports	109	28
HS-1808*/04*.-.-1/Z	Header Manifold, 180 Degree Steel, Size 8 End Ports x Size 4 Side Ports	108	28
HS-1808*/06*.-.-1/Z	Header Manifold, 180 Degree Steel, Size 8 End Ports x Size 6 Side Ports	109	28
HS-1808*/08*.-.-1/Z	Header Manifold, 180 Degree Steel, Size 8 End Ports x Size 8 Side Ports	110	28
HS-1812*/06*.-.-1/Z	Header Manifold, 180 Degree Steel, Size 12 End Ports x Size 6 Side Ports	109	28
HS-1812*/08*.-.-1/Z	Header Manifold, 180 Degree Steel, Size 12 End Ports x Size 8 Side Ports	110	28
HS-1812*/12*.-.-1/Z	Header Manifold, 180 Degree Steel, Size 12 End Ports x Size 12 Side Ports	110	28
HS-1816*/08*.-.-1/Z	Header Manifold, 180 Degree Steel, Size 16 End Ports x Size 8 Side Ports	110	28
HS-1816*/12*.-.-1/Z	Header Manifold, 180 Degree Steel, Size 16 End Ports x Size 12 Side Ports	110	28
HS-1816*/16*.-.-1/Z	Header Manifold, 180 Degree Steel, Size 16 End Ports x Size 16 Side Ports	111	28



What is it, Where is it Index

Part Number	Description	Catag Page	Price Page
HS-1820*/12*.-**1/Z	Header Manifold, 180 Degree Steel, Size 20 End Ports x Size 12 Side Ports	110	28
HS-1820*/16*.-**1/Z	Header Manifold, 180 Degree Steel, Size 20 End Ports x Size 16 Side Ports	111	28
HS-1820*/20*.-**1/Z	Header Manifold, 180 Degree Steel, Size 20 End Ports x Size 20 Side Ports	111	28
HS-1824*/16*.-**1/Z	Header Manifold, 180 Degree Steel, Size 24 End Ports x Size 16 Side Ports	111	28
HS-1824*/20*.-**1/Z	Header Manifold, 180 Degree Steel, Size 24 End Ports x Size 20 Side Ports	111	28
HS-1824*/24*.-**1/Z	Header Manifold, 180 Degree Steel, Size 24 End Ports x Size 24 Side Ports	111	28
HS-1832*/24*.-**1/Z	Header Manifold, 180 Degree Steel, Size 32 End Ports x Size 24 Side Ports	111	28
IC-A05P11	D05 Aluminum IC Circuit Tank Line Feed Control Manifold - NPT	73	20
IC-A05P31	D05 Aluminum IC Solenoid Activated Reperation Modlule - NPT	76	20
IC-A05P41	D05 Aluminum IC Line Feed Control Cyliner Port Meter Out Manifold - NPT	74	20
IC-A05P42	D05 Aluminum IC Line Feed Control Cyliner Port Meter In Manifold - NPT	74	20
IC-A05S11	D05 Aluminum IC Circuit Tank Line Feed Control Manifold - SAE	73	20
IC-A05S31	D05 Aluminum IC Solenoid Activated Reperation Modlule - SAE	76	20
IC-A05S41	D05 Aluminum IC Line Feed Control Cyliner Port Meter Out Manifold - SAE	74	20
IC-A05S42	D05 Aluminum IC Line Feed Control Cyliner Port Meter In Manifold - SAE	74	20
IC-S05P11	D05 Steel IC Circuit Tank Line Feed Control Manifold - NPT	73	20
IC-S05P31	D05 Steel IC Solenoid Activated Reperation Modlule - NPT	75	20
IC-S05P41	D05 Steel IC Line Feed Control Cyliner Port Meter Out Manifold - NPT	74	20
IC-S05P42	D05 Steel IC Line Feed Control Cyliner Port Meter In Manifold - NPT	74	20
IC-S05S11	D05 Steel IC Circuit Tank Line Feed Control Manifold - SAE	73	20
IC-S05S31	D05 Steel IC Solenoid Activated Reperation Modlule - SAE	75	20
IC-S05S41	D05 Steel IC Line Feed Control Cyliner Port Meter Out Manifold - SAE	74	20
IC-S05S42	D05 Steel IC Line Feed Control Cyliner Port Meter In Manifold - SAE	74	20
JA-09000/01P*.-**1/Z	Junction Manifold, 90 Degree Aluminum, 1/16 NPT Side Ports	113	29
JA-09000/02P*.-**1/Z	Junction Manifold, 90 Degree Aluminum, 1/8 NPT Side Ports	113	29
JA-09000/04*.-**1/Z	Junction Manifold, 90 Degree Aluminum, Size 4 Side Ports	113	29
JA-09000/06*.-**1/Z	Junction Manifold, 90 Degree Aluminum, Size 6 Side Ports	114	29
JA-09000/08*.-**1/Z	Junction Manifold, 90 Degree Aluminum, Size 8 Side Ports	114	29
JA-09000/12*.-**1/Z	Junction Manifold, 90 Degree Aluminum, Size 12 Side Ports	114	29
JA-09000/16*.-**1/Z	Junction Manifold, 90 Degree Aluminum, Size 16 Side Ports	114	29
JA-09000/20*.-**1/Z	Junction Manifold, 90 Degree Aluminum, Size 20 Side Ports	114	29
JA-09000/24*.-**1/Z	Junction Manifold, 90 Degree Aluminum, Size 24 Side Ports	114	29
JA-18000/01P*.-**1/Z	Junction Manifold, 180 Degree Aluminum, 1/16 NPT Side Ports	113	30
JA-18000/02P*.-**1/Z	Junction Manifold, 180 Degree Aluminum, 1/8 NPT Side Ports	113	30
JA-18000/04*.-**1/Z	Junction Manifold, 180 Degree Aluminum, Size 4 Side Ports	113	30
JA-18000/06*.-**1/Z	Junction Manifold, 180 Degree Aluminum, Size 6 Side Ports	114	30
JA-18000/08*.-**1/Z	Junction Manifold, 180 Degree Aluminum, Size 8 Side Ports	114	30
JA-18000/12*.-**1/Z	Junction Manifold, 180 Degree Aluminum, Size 12 Side Ports	114	30
JA-18000/16*.-**1/Z	Junction Manifold, 180 Degree Aluminum, Size 16 Side Ports	114	30
JA-18000/20*.-**1/Z	Junction Manifold, 180 Degree Aluminum, Size 20 Side Ports	114	30
JA-18000/24*.-**1/Z	Junction Manifold, 180 Degree Aluminum, Size 24 Side Ports	114	30
JA-27000/01P*.-**1/Z	Junction Manifold, 270 Degree Aluminum, 1/16 NPT Side Ports	113	31
JA-27000/02P*.-**1/Z	Junction Manifold, 270 Degree Aluminum, 1/8 NPT Side Ports	113	31
JA-27000/04*.-**1/Z	Junction Manifold, 270 Degree Aluminum, Size 4 Side Ports	113	31
JA-27000/06*.-**1/Z	Junction Manifold, 270 Degree Aluminum, Size 6 Side Ports	114	31
JA-27000/08*.-**1/Z	Junction Manifold, 270 Degree Aluminum, Size 8 Side Ports	114	31
JA-27000/12*.-**1/Z	Junction Manifold, 270 Degree Aluminum, Size 12 Side Ports	114	31
JA-27000/16*.-**1/Z	Junction Manifold, 270 Degree Aluminum, Size 16 Side Ports	114	31
JA-27000/20*.-**1/Z	Junction Manifold, 270 Degree Aluminum, Size 20 Side Ports	114	31
JA-27000/24*.-**1/Z	Junction Manifold, 270 Degree Aluminum, Size 24 Side Ports	114	31
JS-09000/01P*.-**1/Z	Junction Manifold, 90 Degree Steel, 1/16 NPT Side Ports	113	29
JS-09000/02P*.-**1/Z	Junction Manifold, 90 Degree Steel, 1/8 NPT Side Ports	113	29
JS-09000/04*.-**1/Z	Junction Manifold, 90 Degree Steel, Size 4 Side Ports	113	29
JS-09000/06*.-**1/Z	Junction Manifold, 90 Degree Steel, Size 6 Side Ports	114	29
JS-09000/08*.-**1/Z	Junction Manifold, 90 Degree Steel, Size 8 Side Ports	114	29
JS-09000/12*.-**1/Z	Junction Manifold, 90 Degree Steel, Size 12 Side Ports	114	29
JS-09000/16*.-**1/Z	Junction Manifold, 90 Degree Steel, Size 16 Side Ports	114	29
JS-09000/20*.-**1/Z	Junction Manifold, 90 Degree Steel, Size 20 Side Ports	114	29
JS-09000/24*.-**1/Z	Junction Manifold, 90 Degree Steel, Size 24 Side Ports	114	29
JS-18000/01P*.-**1/Z	Junction Manifold, 180 Degree Steel, 1/16 NPT Side Ports	113	30
JS-18000/02P*.-**1/Z	Junction Manifold, 180 Degree Steel, 1/8 NPT Side Ports	113	30
JS-18000/04*.-**1/Z	Junction Manifold, 180 Degree Steel, Size 4 Side Ports	113	30
JS-18000/06*.-**1/Z	Junction Manifold, 180 Degree Steel, Size 6 Side Ports	114	30
JS-18000/08*.-**1/Z	Junction Manifold, 180 Degree Steel, Size 8 Side Ports	114	30
JS-18000/12*.-**1/Z	Junction Manifold, 180 Degree Steel, Size 12 Side Ports	114	30
JS-18000/16*.-**1/Z	Junction Manifold, 180 Degree Steel, Size 16 Side Ports	114	30
JS-18000/20*.-**1/Z	Junction Manifold, 180 Degree Steel, Size 20 Side Ports	114	30
JS-18000/24*.-**1/Z	Junction Manifold, 180 Degree Steel, Size 24 Side Ports	114	30

What is it, Where is it Index



Part Number	Description	Catag Page	Price Page
JS-27000/01P-**-1/2	Junction Manifold, 270 Degree Steel, 1/16 NPT Side Ports	113	31
JS-27000/02P-**-1/2	Junction Manifold, 270 Degree Steel, 1/8 NPT Side Ports	113	31
JS-27000/04-**-1/2	Junction Manifold, 270 Degree Steel, Size 4 Side Ports	113	31
JS-27000/06-**-1/2	Junction Manifold, 270 Degree Steel, Size 6 Side Ports	114	31
JS-27000/08-**-1/2	Junction Manifold, 270 Degree Steel, Size 8 Side Ports	114	31
JS-27000/12-**-1/2	Junction Manifold, 270 Degree Steel, Size 12 Side Ports	114	31
JS-27000/16-**-1/2	Junction Manifold, 270 Degree Steel, Size 16 Side Ports	114	31
JS-27000/20-**-1/2	Junction Manifold, 270 Degree Steel, Size 20 Side Ports	114	31
JS-27000/24-**-1/2	Junction Manifold, 270 Degree Steel, Size 24 Side Ports	114	31
LFPG-208-***-04N/BS	Liquid Filled Pressure Gauge, 2 1/2" Dial, 1/4" NPT Bottom Stem, with *** Dial Range	175	44
LFPG-208-***-04N/RS	Liquid Filled Pressure Gauge, 2 1/2" Dial, 1/4" NPT Rear Stem, with *** Dial Range	175	44
LFPG-400-***-04N/BS	Liquid Filled Pressure Gauge, 4" Dial, 1/4" NPT Bottom Stem, with *** Dial Range	175	44
LFPG-400-***-04N/RS	Liquid Filled Pressure Gauge, 4" Dial, 1/4" NPT Rear Stem, with *** Dial Range	175	44
LFPG-400-***-08N/BS	Liquid Filled Pressure Gauge, 4" Dial, 1/2" NPT Bottom Stem, with *** Dial Range	175	44
M010-01024	M Series, Size 010 Rod End Coupler, 5/16-24 Thread	189	47
M010-01224	M Series, Size 010 Rod End Coupler, 3/8-24 Thread	189	47
M015-01420	M Series, Size 015 Rod End Coupler, 7/16-20 Thread	189	47
M015-01620	M Series, Size 015 Rod End Coupler, 1/2-20 Thread	189	47
M020-02018	M Series, Size 020 Rod End Coupler, 5/8-18 Thread	189	47
M020-02416	M Series, Size 020 Rod End Coupler, 3/4-16 Thread	189	47
M020-02814	M Series, Size 020 Rod End Coupler, 7/8-14 Thread	189	47
M030-10014	M Series, Size 030 Rod End Coupler, 1-14 Thread	189	47
M040-10812	M Series, Size 040 Rod End Coupler, 1 1/4-12 Thread	189	47
M050-11612	M Series, Size 050 Rod End Coupler, 1/2-12 Thread	189	47
M050-12412	M Series, Size 050 Rod End Coupler, 1 3/4-12 Thread	189	47
M056****45	NEMA 056 Motor Mount w/ Pump Holes Rotated 45 Degrees	44	10
M056****M8	NEMA 056 Motor Mount w/ 4 additional Holes on Motor End to allow Rotating Mount +/-45 Degrees	44	10
M056**100M	NEMA 056 Motor Mount to Metric, 100mm Pump	20	4
M056**100MV	NEMA 056 Vertical Motor Mount to Metric, 100mm Pump	28	6
M056**2A	NEMA 056 Motor Mount to SAE A Pump	20	4
M056**2AA	NEMA 056 Motor Mount to SAE 2AA Pump	20	4
M056**2AAV	NEMA 056 Vertical Motor Mount to SAE 2AA Pump	28	6
M056**2AV	NEMA 056 Vertical Motor Mount to SAE 2A Pump	28	6
M056**2B	NEMA 056 Motor Mount to SAE B Pump	20	4
M056**2BV	NEMA 056 Vertical Motor Mount to SAE B Pump	28	6
M056**4F	NEMA 056 Motor Mount to USA4F17 Pump	20	4
M056**4FV	NEMA 056 Vertical Motor Mount to USA4F17 Pump	28	6
M056**63M	NEMA 056 Motor Mount to Metric 63mm Pump	20	4
M056**63MS	NEMA 056 Motor Mount to Metric 63mm Special Pump	20	4
M056**63MSV	NEMA 056 VerticalMotor Mount to Metric 63mm Special Pump	28	6
M056**63MV	NEMA 056 Vertical Motor Mount to Metric 63mm Pump	28	6
M056**80M	NEMA 056 Motor Mount to Metric 80mm Pump	20	4
M056**80MS	NEMA 056 Motor Mount to Metric 80mm Special Pump	20	4
M056**80MSV	NEMA 056 VerticalMotor Mount to Metric 80mm Special Pump	28	6
M056**80MV	NEMA 056 Vertical Motor Mount to Metric 80mm Pump	28	6
M056VG	NEMA 056 Vertical Mounting Gasket - Option A	27	
M056VG-N	NEMA 056 Vertical Mounting Gasket (Thick Neoprene) - Option A	27	6
M060-12812	M Series, Size 60 Rod End Coupler, 1 7/8-12 Thread	189	47
M060-20012	M Series, Size 60 Rod End Coupler, 2-12 Thread	189	47
M070-20812	M Series, Size 70 Rod End Coupler, 2 1/4-12 Thread	189	47
M080-21612	M Series, Size 80 Rod End Coupler, 2 1/2-12 Thread	189	47
M080-22412	M Series, Size 80 Rod End Coupler, 2 3/4-12 Thread	189	47
M080-30012	M Series, Size 80 Rod End Coupler, 3-12 Thread	189	47
M100****	Model 100 Coupling Hub Bored & Keyed	5	1
M100****DSS**	Model 100 Coupling Hub Bored & Keyed w/Double Set Screws	2	2
M100-30812	M Series, Size 80 Rod End Coupler, 3 1/4-12 Thread	189	47
M100A****	Model 100 Coupling Hub Spline Bore	7	2
M100A****C	Model 100 Coupling Hub Spline Bore w/Clamp	7	2
M100B****	Model 100 Coupling Hub Steel Bushed Spline Bore	7	2
M100B****C	Model 100 Coupling Hub Steel Bushed Spline Bore w/Clamp	7	2
M100M****	Model 100 Coupling Hub Metric Bore & key	5	2
M100R	Model 100 Coupling Hub No Bore	5	1
M130ML**100M	IEC Metric 130ML Motor Mount to Metric 100mm Pump	23	5
M130ML**2A	IEC Metric 130ML Motor Mount to SAE A Pump	23	5
M130ML**2AA	IEC Metric 130ML Motor Mount to SAE 2AA Pump	23	5
M130ML**2B	IEC Metric 130ML Motor Mount to SAE B Pump	23	5
M130ML**4F	IEC Metric 130ML Motor Mount to USA4F17 Pump	23	5
M130ML**63M	IEC Metric 130ML Motor Mount to Metric 63mm Pump	23	5



What is it, Where is it Index

Part Number	Description	Catag Page	Price Page
M130ML**63MS	IEC Metric 130ML Motor Mount to Metric 63mm Special Pump	23	5
M130ML**80M	IEC Metric 130ML Motor Mount to Metric 80mm Pump	23	5
M130ML**80MS	IEC Metric 130ML Motor Mount to Metric 80mm Special Pump	23	5
M140-40812	M Sereis, Size 140 Rod End Coupler, 4 1/4-12 Thread	189	47
M170**	Model 100 Insert	8	1
M180ML**100M	IEC Metric 180ML Motor Mount to Metric 100mm Pump	24	5
M180ML**125M	IEC Metric 180ML Motor Mount to Metric 125mm Pump	24	5
M180ML**2A	IEC Metric 180ML Motor Mount to SAE A Pump	23	5
M180ML**2AA	IEC Metric 180ML Motor Mount to SAE 2AA Pump	23	5
M180ML**2B	IEC Metric 180ML Motor Mount to SAE B Pump	24	5
M180ML**2C	IEC Metric 180ML Motor Mount to SAE C Pump	24	5
M180ML**4F	IEC Metric 180ML Motor Mount to USA4F17 Pump	23	5
M180ML**63M	IEC Metric 180ML Motor Mount to Metric 63mm Pump	23	5
M180ML**63MS	IEC Metric 180ML Motor Mount to Metric 63mm Special Pump	23	5
M180ML**80M	IEC Metric 180ML Motor Mount to Metric 80mm Pump	23	5
M180ML**80MS	IEC Metric 180ML Motor Mount to Metric 80mm Special Pump	23	5
M182****45	NEMA 182 Motor Mount w/Pump Holes Rotated 45 Degrees	44	10
M182****M8	NEMA 182 Motor Mount w/4 Additional Holes on Motor End to Allow Rotating +/-45 Degrees	44	10
M182****VW	NEMA 182 Special Vertical Motor Mount for WorldWide Corp Motor	44	10
M182**100M	NEMA 182 Motor Mount to Metric 100mm Pump	21	4
M182**100MV	NEMA 182 Vertical Motor Mount to Metric 100mm Pump	29	6
M182**125M	NEMA 182 Motor Mount to Metric 125mm Pump	21	4
M182**125MV	NEMA 182 Vertical Motor Mount to Metric 125mm Pump	29	6
M182**2A	NEMA 182 Motor Mount to SAE A Pump	21	4
M182**2AA	NEMA 182 Motor Mount to SAE 2AA Pump	21	4
M182**2AAV	NEMA 182 Vertical Motor Mount to SAE 2AA Pump	29	6
M182**2AV	NEMA 182 Vertical Motor Mount to SAE A Pump	29	6
M182**2B	NEMA 182 Motor Mount to SAE B Pump	21	4
M182**2BV	NEMA 182 Vertical Motor Mount to SAE B Pump	29	6
M182**2C	NEMA 182 Motor Mount to SAE C Pump	21	4
M182**2CV	NEMA 182 Vertical Motor Mount to SAE C Pump	29	6
M182**4F	NEMA 182 Motor Mount to USA4F17 Pump	21	4
M182**4FV	NEMA 182 Vertical Motor Mount to USA4F17 Pump	29	6
M182**63M	NEMA 182 Motor Mount to Metric 63mm Pump	21	4
M182**63MS	NEMA 182 Motor Mount to Metric 63mm Special Pump	21	4
M182**63MSV	NEMA 182 Vertical Motor Mount to Metric 63mm Special Pump	29	6
M182**63MV	NEMA 182 Vertical Motor Mount to Metric 63mm Special Pump	29	6
M182**80M	NEMA 182 Motor Mount to Metric 80mm Pump	21	4
M182**80MS	NEMA 182 Motor Mount to Metric 80mm Special Pump	21	4
M182**80MSV	NEMA 182 Vertical Motor Mount to Metric 80mm Special Pump	29	6
M182**80MV	NEMA 182 Vertical Motor Mount to Metric 80mm Special Pump	29	6
M182AVG	NEMA 182 Vertical Mount Gasket (Thick Neoprene) - Option A	28	6
M182BVG	NEMA 182 Vertical Mount Gasket - Option B	28	6
M200****	Model 200 Coupling Hub Bored & Keyed	5	1
M200****DSS**	Model 200 Coupling Hub Bored & Keyed w/Double Set Screws	2	2
M200A****	Model 200 Coupling Hub Spline Bore	7	2
M200A****C	Model 200 Coupling Hub Spline Bore w/Clamp	7	2
M200B****	Model 200 Coupling Hub Steel Bushed Spline Bore	7	2
M200B****C	Model 200 Coupling Hub Steel Bushed Spline Bore w/Clamp	7	2
M200M****	Model 200 Coupling Hub Metric Bore & Key	5	2
M200R	Model 200 Coupling Hub No Bore	5	1
M230ML**100M	IEC Metric 230ML Motor to Metric 100mm Pump	25	5
M230ML**125M	IEC Metric 230ML Motor to Metric 125mm Pump	25	5
M230ML**2A	IEC Metric 230ML Motor to SAE A Pump	25	5
M230ML**2AA	IEC Metric 230ML Motor to SAE 2AA Pump	25	5
M230ML**2B	IEC Metric 230ML Motor to SAE B Pump	25	5
M230ML**2C	IEC Metric 230ML Motor to SAE C Pump	25	5
M230ML**4F	IEC Metric 230ML Motor to USA4F17 Pump	25	5
M230ML**63M	IEC Metric 230ML Motor to Metric 63mm Pump	25	5
M230ML**63MS	IEC Metric 230ML Motor to Metric 63mm Special Pump	25	5
M230ML**80M	IEC Metric 230ML Motor to Metric 80mm Pump	25	5
M230ML**80MS	IEC Metric 230ML Motor to Metric 80mm Special Pump	25	5
M250ML**100M	IEC Metric 230ML Motor to Metric 100mm Pump	26	5
M250ML**125M	IEC Metric 230ML Motor to Metric 125mm Pump	26	5
M250ML**160M	IEC Metric 230ML Motor to Metric 160mm Pump	26	5
M250ML**180M	IEC Metric 230ML Motor to Metric 180mm Pump	26	5
M250ML**2B	IEC Metric 230ML Motor to SAE B Pump	26	5
M250ML**2C	IEC Metric 230ML Motor to SAE C Pump	26	5

What is it, Where is it Index



Part Number	Description	Catag Page	Price Page
M250ML**2D	IEC Metric 230ML Motor to SAE D Pump	26	5
M270**	Model 200 Insert	8	1
M284****45	Steel NEMA 284 Motor Mount w/Pump Holes Rotated 45 Degrees	44	10
M284****M8	Steel NEMA 284 Motor Mount w/4 Additional Holes on Motor End to Allow Rotating Mount +/-45 Degrees	44	10
M284**100M	NEMA 284 Motor Mount to Metric 100mm Pump	22	4
M284**125M	NEMA 284 Motor Mount to Metric 125mm Pump	22	4
M284**2A	NEMA 284 Motor Mount to SAE A Pump	22	4
M284**2B	NEMA 284 Motor Mount to SAE b Pump	22	4
M284**2C	NEMA 284 Motor Mount to SAE C Pump	22	4
M284**63M	NEMA 284 Motor Mount to Metric 63mm Pump	22	4
M284**63MS	NEMA 284 Motor Mount to Metric 63mm Special Pump	22	4
M284**80M	NEMA 284 Motor Mount to Metric 80mm Pump	22	4
M284**80MS	NEMA 284 Motor Mount to Metric 80mm Special Pump	22	4
M300****	Model 300 Coupling Hub Bored & Keyed	5	1
M300****DSS**	Model 300 Coupling Hub Bored & Keyed w/Double Set Screws	2	2
M300A****	Model 300 Coupling Hub Spline Bore	7	2
M300A****C	Model 300 Coupling Hub Spline Bore w/Clamp	7	2
M300B****	Model 300 Coupling Hub Steel Bushed Spline Bore	7	2
M300B****C	Model 300 Coupling Hub Steel Bushed Spline Bore w/Clamp	7	2
M300M****	Model 300 Coupling Hub Metric Bored & Keyed	5	2
M300R	Model 300 Coupling Hub No Bore	5	1
M370**	Model 300 Indsert	8	1
M400****	Model 400 Couping Hub Bored & Keyed	5	1
M400****DSS**	Model 400 Couping Hub Bored & Keyed w/Double Set Screws	2	2
M400A****	Model 400 Couping Hub Spline Bore	7	2
M400A****C	Model 400 Couping Hub Spline Bore w/Clamp	7	2
M400B****	Model 400 Couping Hub Steel Bushed Spline Bore	7	2
M400B****C	Model 400 Couping Hub Steel Bushed Spline Bore w/Clamp	7	2
M400M****	Model 400 Couping Hub Metric Bore & Keyed	5	2
M400R	Model 400 Coupling Hub No Bore	5	1
M444****45	Steel NEMA 444 Motor Mount w/Pump Holes Rotated 45 Degrees	44	10
M444****M8	Steel NEMA 444 Motor Mount w/4 Additional Holes on Motor End to Allow Rotating Mount +/-45 Degrees	44	10
M444882C	NEMA 444 Motor Mount to SAE C Pump	22	4
M444882D	NEMA 444 Motor Mount to SAE D Pump	22	4
M444882E	NEMA 444 Motor Mount to SAE E Pump	22	4
M470**	Model 400 Insert	8	1
M500****	Model 500 Couping Hub Bored & Keyed	5	1
M500****DSS**	Model 500 Couping Hub Bored & Keyed w/Double Set Screws	2	2
M500A****	Model 500 Couping Hub Spline Bore	7	2
M500A****C	Model 500 Couping Hub Spline Bore w/Clamp	7	2
M500B****	Model 500 Couping Hub Steel Bushed Spline Bore	7	2
M500B****C	Model 500 Couping Hub Steel Bushed Spline Bore w/Clamp	7	2
M500M****	Model 500 Couping Hub Metric Bore & Keyed	5	2
M500R	Model 500 Coupling Hub No Bore	5	1
M570**	Model 500 Insert	8	1
M600****	Model 600 Couping Hub Bored & Keyed	5	1
M600****DSS**	Model 600 Couping Hub Bored & Keyed w/Double Set Screws	2	2
M600A****	Model 600 Couping Hub Spline Bore	7	2
M600A****C	Model 600 Couping Hub Spline Bore w/Clamp	7	2
M600B****	Model 600 Couping Hub Steel Bushed Spline Bore	7	2
M600B****C	Model 600 Couping Hub Steel Bushed Spline Bore w/Clamp	7	2
M600M****	Model 600 Couping Hub Metric Bore & Keyed	5	2
M600R	Model 600 Coupling Hub No Bore	5	1
M670**	Model 600 Insert	8	1
M700****	Model 700 Couping Hub Bored & Keyed	5	1
M700****DSS**	Model 700 Couping Hub Bored & Keyed w/Double Set Screws	2	2
M700A****	Model 700 Couping Hub Spline Bore	7	2
M700A****C	Model 700 Couping Hub Spline Bore w/Clamp	7	2
M700B****	Model 700 Couping Hub Steel Bushed Spline Bore	7	2
M700B****C	Model 700 Couping Hub Steel Bushed Spline Bore w/Clamp	7	2
M700M****	Model 700 Couping Hub Metric Bore & Keyed	5	2
M700R	Model 700 Coupling Hub No Bore	5	1
M770**	Model 700 Insert	8	1
M800****	Model 800 Couping Hub Bored & Keyed	5	1
M800****DSS**	Model 800 Couping Hub Bored & Keyed w/Double Set Screws	2	2
M800A****	Model 800 Couping Hub Spline Bore	7	2
M800A****C	Model 800 Couping Hub Spline Bore w/Clamp	7	2
M800B****	Model 800 Couping Hub Steel Bushed Spline Bore	7	2



What is it, Where is it Index

Part Number	Description	Catag Page	Price Page
M800B****C	Model 800 Couping Hub Steel Bushed Spline Bore w/Clamp	7	2
M800M****	Model 800 Couping Hub Metric Bore & Keyed	5	2
M800R	Model 800 Coupling Hub No Bore	5	1
M870**	Model 800 Insert	8	1
M900****	Model 900 Couping Hub Bored & Keyed	5	1
M900****DSS**	Model 900 Couping Hub Bored & Keyed w/Double Set Screws	2	2
M900B****	Model 900 Couping Hub Spline Bore	7	2
M900B****C	Model 900 Couping Hub Spline Bore w/Clamp	7	2
M900M****	Model 900 Couping Hub Metric Bore & Keyed	5	2
M900R	Model 900 Coupling Hub No Bore	5	1
M970**	Model 900 Insert	5	1
MA-A034*-TP-AB	D03 Aluminum Tapping Plate A & B Ports on Sides - Size 4 Threads	102	25
MA-A034*-TP-PP	D03 Aluminum Perimeter Ported Tapping Plate - Size 4 Threads	102	25
MA-A034*-TP-PT	D03 Aluminum Tapping Plate P & T Ports on Sides - Size 4 Threads	102	25
MA-A03ZZ-OP-ZZ	D03 Aluminum Orifice Plate - No Threads	100	25
MA-A03ZZ-TP-ZZ	D03 Aluminum Tapping Plate - No Threads	102	25
MA-A054*-TP-AB	D05 Aluminum Tapping Plate A & B Ports on Sides - Size 4 Threads	103	25
MA-A054*-TP-PP	D05 Aluminum Perimeter Ported Tapping Plate - Size 4 Threads	103	25
MA-A054*-TP-PT	D05 Aluminum Tapping Plate P & T Ports on Sides - Size 4 Threads	103	25
MA-A05ZZ-OP-ZZ	D05 Aluminum Orifice Plate - No Threads	101	25
MA-A05ZZ-PA-ZZ	D05 Aluminum Pilot Adaptor - No Threads	98	25
MA-A05ZZ-TP-ZZ	D05 Aluminum Tapping Plate - No Threads	103	25
MA-A05ZZ-UM-ZZ	D05 Aluminum Unloading Module - No Threads	99	25
MA-A084*-TP-AB	D08 Aluminum Tapping Plate A & B Ports on Sides - Size 4 Threads	104	25
MA-A084*-TP-PP	D08 Aluminum Perimeter Ported Tapping Plate - Size 4 Threads	104	25
MA-A084*-TP-PS	D08 Aluminum Tapping Plate All Ports on Short Sides - Size 4 Threads	104	25
MA-A084*-TP-PT	D05 Aluminum Tapping Plate P & T Ports on Sides - Size 4 Threads	104	25
MA-A08ZZ-TP-ZZ	D08 Aluminum Tapping Plate - No Threads	104	25
MAC-D12124-048/S	Anchor Double Channel, 1 3/4" Height, 48" Length, 12 Ga Steel	156	41
MAC-D12124-120/S	Anchor Double Channel, 1 3/4" Height, 120" Length, 12 Ga Steel	156	41
MAC-D12200-048/S	Anchor Double Channel, 2" Height, 48" Length, 12 Ga Steel	156	41
MAC-D12200-120/S	Anchor Double Channel, 2" Height, 120" Length, 12 Ga Steel	156	41
MAC-D14120-048/S	Anchor Double Channel, 1 5/8" Height, 48" Length, 14 Ga Steel	156	41
MAC-D14120-048/SS4	Anchor Double Channel, 1 5/8" Height, 48" Length, 14 Ga 304 Stainless Steel	156	41
MAC-D14120-048/SS6	Anchor Double Channel, 1 5/8" Height, 48" Length, 14 Ga 316 Stainless Steel	156	41
MAC-D14120-120/S	Anchor Double Channel, 1 5/8" Height, 120" Length, 14 Ga Steel	156	41
MAC-D14120-120/SS4	Anchor Double Channel, 1 5/8" Height, 120" Length, 14 Ga 304 Stainless Steel	156	41
MAC-D14120-120/SS6	Anchor Double Channel, 1 5/8" Height, 120" Length, 14 Ga 316 Stainless Steel	156	41
MAC-S12028-036/S	Anchor Singel Channel, 7/8" Height, 36" Length, 12 Ga Steel	156	41
MAC-S12028-048/S	Anchor Singel Channel, 7/8" Height, 48" Length, 12 Ga Steel	156	41
MAC-S12028-120/S	Anchor Singel Channel, 7/8" Height, 120" Length, 12 Ga Steel	156	41
MAC-S12100-036/S	Anchor Singel Channel, 1" Height, 36" Length, 12 Ga Steel	156	41
MAC-S12100-048/S	Anchor Singel Channel, 1" Height, 48" Length, 12 Ga Steel	156	41
MAC-S12100-120/S	Anchor Singel Channel, 1" Height, 120" Length, 12 Ga Steel	156	41
MAC-S14026-048/S	Anchor Singel Channel, 13/16" Height, 48" Length, 14 Ga Steel	156	41
MAC-S14026-048/SS4	Anchor Singel Channel, 13/16" Height, 48" Length, 14 Ga 304 Stainless Steel	156	41
MAC-S14026-048/SS6	Anchor Singel Channel, 13/16" Height, 48" Length, 14 Ga 316 Stainless Steel	156	41
MAC-S14026-120/S	Anchor Singel Channel, 13/16" Height, 120" Length, 14 Ga Steel	156	41
MAC-S14026-120/SS4	Anchor Singel Channel, 13/16" Height, 120" Length, 14 Ga 304 Stainless Steel	156	41
MAC-S14026-120/SS6	Anchor Singel Channel, 13/16" Height, 120" Length, 14 Ga 316 Stainless Steel	156	41
MA-S034*-TP-AB	D03 Steel Tapping Plate, A & B Ports on Sides - Size 4 Threads	102	25
MA-S034*-TP-PP	D03 Steel Perimeter Ported Tapping Plate - Size 4 Threads	102	25
MA-S034*-TP-PT	D03 Steel Tapping Plate, P & T Ports on Sides - Size 4 Threads	102	25
MA-S03ZZ-OP-ZZ	D03 Steel Orifice Plate - No Threads	100	25
MA-S03ZZ-TP-ZZ	D03 Steel Tapping Plate - No Threads	102	25
MA-S054*-TP-AB	D05 Steel Tapping Plate, A & B Ports on Sides - Size 4 Threads	103	25
MA-S054*-TP-PP	D05 Steel Perimeter Ported Tapping Plate - Size 4 Threads	103	25
MA-S054*-TP-PT	D05 Steel Tapping Plate, P & T Ports on Sides - Size 4 Threads	103	25
MA-S05ZZ-OP-ZZ	D05 Steel Orifice Plate - No Threads	101	25
MA-S05ZZ-PA-ZZ	D05 Steel Pilot Adaptor - No Threads	98	25
MA-S05ZZ-TP-ZZ	D05 Steel Tapping Plate - No Threads	103	25
MA-S05ZZ-UM-ZZ	D05 Steel Unloading Module - No Threads	99	25
MA-S084*-TP-AB	D08 Steel Tapping Plate, A & B Ports on Sides - Size 4 Threads	104	25
MA-S084*-TP-PP	D08 Steel Perimeter Ported Tapping Plate - Size 4 Threads	104	25
MA-S084*-TP-PS	D08 Steel Tapping Plate, All Ports on Short Sides - Size 4 Threads	104	25
MA-S084*-TP-PT	D08 Steel Tapping Plate, P & T Ports on Sides - Size 4 Threads	104	25
MA-S08ZZ-TP-ZZ	D08 Steel Tapping Plate - No Threads	104	25
MBP-056/184	Motor Base Plate, NEMA 056 Thru 184	185	45

What is it, Where is it Index



Part Number	Description	Catag Page	Price Page
APB-213-256	Alloy Base Pipe, NEMA 213 Thru 256	185	45
APB-214-326	Alloy Base Pipe, NEMA 214 Thru 326	185	45
AOC-098P	Channel Mounted Oscion Clang - 3/4" Pipe	158	40
AOC-098T	Channel Mounted Oscion Clang - 0.25" Tube	158	40
AOC-092P	Channel Mounted Oscion Clang - 3/8" Pipe	158	40
AOC-092T	Channel Mounted Oscion Clang - 0.375" Tube	158	40
AOC-096P	Channel Mounted Oscion Clang - 3/2" Pipe	158	40
AOC-096T	Channel Mounted Oscion Clang - 0.500" Tube	158	40
AOC-090T	Channel Mounted Oscion Clang - 0.625" Tube	158	40
AOC-094P	Channel Mounted Oscion Clang - 3/4" Pipe	158	40
AOC-094T	Channel Mounted Oscion Clang - 0.750" Tube	158	40
AOC-098T	Channel Mounted Oscion Clang - 0.875" Tube	158	40
AOC-090P	Channel Mounted Oscion Clang - 3" Pipe	158	40
AOC-090T	Channel Mounted Oscion Clang - 1.000" Tube	158	40
AOC-094T	Channel Mounted Oscion Clang - 1.125" Tube	158	40
AOC-096T	Channel Mounted Oscion Clang - 1.250" Tube	158	40
AOC-098P	Channel Mounted Oscion Clang - 1 3/4" Pipe	158	40
AOC-098T	Channel Mounted Oscion Clang - 1.250" Tube	158	40
AOC-092T	Channel Mounted Oscion Clang - 1.375" Tube	158	40
AOC-096P	Channel Mounted Oscion Clang - 1 1/2" Pipe	158	40
AOC-096T	Channel Mounted Oscion Clang - 1.500" Tube	158	40
AOC-090T	Channel Mounted Oscion Clang - 1.625" Tube	158	40
AOC-094T	Channel Mounted Oscion Clang - 1.750" Tube	158	40
AOC-098T	Channel Mounted Oscion Clang - 1.875" Tube	158	40
AOC-090P	Channel Mounted Oscion Clang - 2" Pipe	158	40
AOC-090T	Channel Mounted Oscion Clang - 2.000" Tube	158	40
AOC-094T	Channel Mounted Oscion Clang - 2.125" Tube	158	40
AOC-098T	Channel Mounted Oscion Clang - 2.250" Tube	158	40
AOC-092T	Channel Mounted Oscion Clang - 2.375" Tube	158	40
AOC-096P	Channel Mounted Oscion Clang - 2 1/2" Pipe	158	40
AOC-096T	Channel Mounted Oscion Clang - 2.500" Tube	158	40
AOC-090T	Channel Mounted Oscion Clang - 2.625" Tube	158	40
AOC-098T	Channel Mounted Oscion Clang - 2.750" Tube	158	40
AOC-090P	Channel Mounted Oscion Clang - 3" Pipe	158	40
AOC-090T	Channel Mounted Oscion Clang - 3.000" Tube	158	40
AOC-094T	Channel Mounted Oscion Clang - 3.125" Tube	158	40
AOC-098T	Channel Mounted Oscion Clang - 3.250" Tube	158	40
AOC-096P	Channel Mounted Oscion Clang - 3 1/2" Pipe	158	40
AOC-090T	Channel Mounted Oscion Clang - 3.625" Tube	158	40
AOC-090P	Channel Mounted Oscion Clang - 4" Pipe	158	40
AOC-094T	Channel Mounted Oscion Clang - 4.125" Tube	158	40
AOC-090P	Channel Mounted Oscion Clang - 5" Pipe	158	40
AOC-090P	Channel Mounted Oscion Clang - 6" Pipe	158	40
APB056-B	Alloy Coupling Bar, NEMA 056, Bolt-On Style	180	46
APB056-W	Alloy Coupling Bar, NEMA 056, Weld Style	182	46
APB071-B	Alloy Coupling Bar, IEC 071, Bolt-On Style	180	46
APB071-W	Alloy Coupling Bar, IEC 071, Weld Style	182	46
APB080-B	Alloy Coupling Bar, IEC 080, Bolt-On Style	180	46
APB080-W	Alloy Coupling Bar, IEC 080, Weld Style	182	46
APB080-L-B	Alloy Coupling Bar, IEC 080 L, Bolt-On Style	180	46
APB080-L-W	Alloy Coupling Bar, IEC 080 L, Weld Style	182	46
APB080-S-B	Alloy Coupling Bar, IEC 080 S, Bolt-On Style	180	46
APB080-S-W	Alloy Coupling Bar, IEC 080 S, Weld Style	182	46
APB090-L-B	Alloy Coupling Bar, IEC 090 L, Bolt-On Style	180	46
APB090-L-W	Alloy Coupling Bar, IEC 090 L, Weld Style	182	46
APB090-AL-B	Alloy Coupling Bar, IEC 090 AL, Bolt-On Style	180	46
APB090-AL-W	Alloy Coupling Bar, IEC 090 AL, Weld Style	182	46
APB090-AL-S-B	Alloy Coupling Bar, IEC 090 AL, Bolt-On Style	180	46
APB090-AL-S-W	Alloy Coupling Bar, IEC 090 AL, Weld Style	182	46
APB090-S-B	Alloy Coupling Bar, IEC 090 S, Bolt-On Style	180	46
APB090-S-W	Alloy Coupling Bar, IEC 090 S, Weld Style	182	46
APB090-L-S-B	Alloy Coupling Bar, IEC 090 L, Bolt-On Style	180	46
APB090-L-S-W	Alloy Coupling Bar, IEC 090 L, Weld Style	182	46
APB090-AL-S-B	Alloy Coupling Bar, IEC 090 AL, Bolt-On Style	180	46
APB090-AL-S-W	Alloy Coupling Bar, IEC 090 AL, Weld Style	182	46



What is it, Where is it Index

Part Number	Description	Catag Page	Price Page
PS-400-215	Double Pressure Switch	177	45
R010-01024	R Series, Size 010 Rod End Coupler - 5/16-24 Thread	191	47
R010-01224	R Series, Size 010 Rod End Coupler - 3/8-24 Thread	191	47
R020-01420	R Series, Size 020 Rod End Coupler - 7/16-20 Thread	191	47
R020-01620	R Series, Size 020 Rod End Coupler - 1/26-20 Thread	191	47
R020-02018	R Series, Size 020 Rod End Coupler - 5/8-18 Thread	191	47
R030-02416	R Series, Size 030 Rod End Coupler - 3/4-16 Thread	191	47
R030-02814	R Series, Size 030 Rod End Coupler - 7/8-14 Thread	191	47
R040-10014	R Series, Size 040 Rod End Coupler - 1-14 Thread	191	47
R040-10812	R Series, Size 040 Rod End Coupler - 1 1/2-12 Thread	191	47
RDIN0120-AFA	DIN Style Reservoir, 120 Gallon Capacity, Front Access, A Type	134	35
RDIN0120-BSA	DIN Style Reservoir, 120 Gallon Capacity, Side Access, B Type	135	35
RDIN0120-CFA	DIN Style Reservoir, 120 Gallon Capacity, Front Access, C Type	136	35
RDIN0120-DSA	DIN Style Reservoir, 120 Gallon Capacity, Side Access, D Type	137	35
RDIN0150-AFA	DIN Style Reservoir, 150 Gallon Capacity, Front Access, A Type	134	35
RDIN0150-BSA	DIN Style Reservoir, 150 Gallon Capacity, Side Access, B Type	135	35
RDIN0150-CFA	DIN Style Reservoir, 150 Gallon Capacity, Front Access, C Type	136	35
RDIN0150-DSA	DIN Style Reservoir, 150 Gallon Capacity, Side Access, D Type	137	35
RDIN020-AFA	DIN Style Reservoir, 20 Gallon Capacity, Front Access, A Type	134	35
RDIN020-BSA	DIN Style Reservoir, 20 Gallon Capacity, Side Access, B Type	135	35
RDIN020-CFA	DIN Style Reservoir, 20 Gallon Capacity, Front Access, C Type	136	35
RDIN020-DSA	DIN Style Reservoir, 20 Gallon Capacity, Side Access, D Type	137	35
RDIN030-AFA	DIN Style Reservoir, 30 Gallon Capacity, Front Access, A Type	134	35
RDIN030-BSA	DIN Style Reservoir, 30 Gallon Capacity, Side Access, B Type	135	35
RDIN030-CFA	DIN Style Reservoir, 30 Gallon Capacity, Front Access, C Type	136	35
RDIN030-DSA	DIN Style Reservoir, 30 Gallon Capacity, Side Access, D Type	137	35
RDIN040-AFA	DIN Style Reservoir, 40 Gallon Capacity, Front Access, A Type	134	35
RDIN040-BSA	DIN Style Reservoir, 40 Gallon Capacity, Side Access, B Type	135	35
RDIN040-CFA	DIN Style Reservoir, 40 Gallon Capacity, Front Access, C Type	136	35
RDIN040-DSA	DIN Style Reservoir, 40 Gallon Capacity, Side Access, D Type	137	35
RDIN060-AFA	DIN Style Reservoir, 60 Gallon Capacity, Front Access, A Type	134	35
RDIN060-BSA	DIN Style Reservoir, 60 Gallon Capacity, Side Access, B Type	135	35
RDIN060-CFA	DIN Style Reservoir, 60 Gallon Capacity, Front Access, C Type	136	35
RDIN060-DSA	DIN Style Reservoir, 60 Gallon Capacity, Side Access, D Type	137	35
RDIN080-AFA	DIN Style Reservoir, 80 Gallon Capacity, Front Access, A Type	134	35
RDIN080-BSA	DIN Style Reservoir, 80 Gallon Capacity, Side Access, B Type	135	35
RDIN080-CFA	DIN Style Reservoir, 80 Gallon Capacity, Front Access, C Type	136	35
RDIN080-DSA	DIN Style Reservoir, 80 Gallon Capacity, Side Access, D Type	137	35
RDIN100-AFA	DIN Style Reservoir, 100 Gallon Capacity, Front Access, A Type	134	35
RDIN100-BSA	DIN Style Reservoir, 100 Gallon Capacity, Side Access, B Type	135	35
RDIN100-CFA	DIN Style Reservoir, 100 Gallon Capacity, Front Access, C Type	136	35
RDIN100-DSA	DIN Style Reservoir, 100 Gallon Capacity, Side Access, D Type	137	35
RDIN200-AFA	DIN Style Reservoir, 200 Gallon Capacity, Front Access, A Type	134	35
RDIN200-BSA	DIN Style Reservoir, 200 Gallon Capacity, Side Access, B Type	135	35
RDIN200-CFA	DIN Style Reservoir, 200 Gallon Capacity, Front Access, C Type	136	35
RDIN200-DSA	DIN Style Reservoir, 200 Gallon Capacity, Side Access, D Type	137	35
RDIN300-AFA	DIN Style Reservoir, 300 Gallon Capacity, Front Access, A Type	134	35
RDIN300-BSA	DIN Style Reservoir, 300 Gallon Capacity, Side Access, B Type	135	35
RDVS40-2	Dual Vetiact Reservoir, 40 Gallon - Series 2	122	32
RDVS50-3	Dual Vetiact Reservoir, 50 Gallon - Series 3	122	32
RDVS60-2	Dual Vetiact Reservoir, 540 Gallon - Series 2	122	32
RDVS60-3	Dual Vetiact Reservoir, 60 Gallon - Series 3	122	32
REC06B	Reservoir End Cover, Back Plate Only, 6"	140	
REC06C	Reservoir End Cover, Front Cover Only, 6"	140	
REC06F	Reservoir End Cover, Mounting Bolt Only, 6"	140	
REC06G	Reservoir End Cover, Gasket Only, 6"	140	
REC06K	Reservoir End Cover Assembly, 6"	140	37
REC06W	Reservoir End Cover, Nylon Washer Only, 6"	140	
REC12CN	12" Reservoir End Cover with 3/4" NPT Drain	141	37
REC12CS	12" Reservoir End Cover with #12 SAE Drain	141	37
REC12CX	12" Reservoir End Cover Only	141	37
REC12KN	12" Reservoir End Cover Kit with 3/4" NPT Drain	141	37
REC12KS	12" Reservoir End Cover Kit with #12 SAE NPT Drain	141	37
REC12KX	12" Reservoir End Cover Kit	141	37
REC14CN	14" Reservoir End Cover with 3/4" NPT Drain	141	37
REC14CS	14" Reservoir End Cover with #12 SAE Drain	141	37
REC14CX	14" Reservoir End Cover Only	141	37
REC14KN	14" Reservoir End Cover Kit with 3/4" NPT Drain	141	37

What is it, Where is it Index



Part Number	Description	Catag Page	Price Page
REC14KS	14" Reservoir End Cover Kit with #12 SAE NPT Drain	141	37
REC14KX	14" Reservoir End Cover Kit	141	37
REC16CN	16" Reservoir End Cover with 3/4" NPT Drain	141	37
REC16CS	16" Reservoir End Cover with #12 SAE Drain	141	37
REC16CX	16" Reservoir End Cover Only	141	37
REC16KN	16" Reservoir End Cover Kit with 3/4" NPT Drain	141	37
REC16KS	16" Reservoir End Cover Kit with #12 SAE NPT Drain	141	37
REC16KX	16" Reservoir End Cover Kit	141	37
REC18CN	18" Reservoir End Cover with 3/4" NPT Drain	141	37
REC18CS	18" Reservoir End Cover with #12 SAE Drain	141	37
REC18CX	18" Reservoir End Cover Only	141	37
REC18KN	18" Reservoir End Cover Kit with 3/4" NPT Drain	141	37
REC18KS	18" Reservoir End Cover Kit with #12 SAE NPT Drain	141	37
REC18KX	18" Reservoir End Cover Kit	141	37
REC-M350K	Reservoir End Cover, DIN Style, Bolt On, 350mm	142	37
REC-M475K	Reservoir End Cover, DIN Style, Bolt On, 475mm	143	37
RHC010-FT	Horizontal Style Reservoir, 10 Gallon Capacity with Fixed Top	132	35
RHC020-FT	Horizontal Style Reservoir, 20 Gallon Capacity with Fixed Top	132	35
RHC030-FT	Horizontal Style Reservoir,310 Gallon Capacity with Fixed Top	132	35
RHC040-FT	Horizontal Style Reservoir,410 Gallon Capacity with Fixed Top	132	35
RHC060-FT	Horizontal Style Reservoir, 60 Gallon Capacity with Fixed Top	132	35
RHP010-RT	Horizontal Style Reservoir, 10 Gallon Capacity with Removable Top	133	35
RHP020-RT	Horizontal Style Reservoir, 20 Gallon Capacity with Removable Top	133	35
RHP030-RT	Horizontal Style Reservoir, 30 Gallon Capacity with Removable Top	133	35
RHP040-RT	Horizontal Style Reservoir, 40 Gallon Capacity with Removable Top	133	35
RJDP010	Reservoir Drip Pan for 10 Gallon JIC Reservoir Without Riser	138	36
RJDP015	Reservoir Drip Pan for 15 Gallon JIC Reservoir Without Riser	138	36
RJDP020	Reservoir Drip Pan for 20 Gallon JIC Reservoir Without Riser	138	36
RJDP030	Reservoir Drip Pan for 30, 40 & 50 Gallon JIC Reservoir Without Riser	138	36
RJDP060	Reservoir Drip Pan for 60 Gallon JIC Reservoir Without Riser	138	36
RJDP080	Reservoir Drip Pan for 80 &100 Gallon JIC Reservoir Without Riser	138	36
RJDP120	Reservoir Drip Pan for 120 & 150 Gallon JIC Reservoir Without Riser	138	36
RJDP200	Reservoir Drip Pan for 200 Gallon JIC Reservoir Without Riser	138	36
RJDP010	Reservoir Drip Pan for 10 Gallon JIC Reservoir With Riser	138	36
RJDP015	Reservoir Drip Pan for 15 Gallon JIC Reservoir With Riser	138	36
RJDP020	Reservoir Drip Pan for 20 Gallon JIC Reservoir With Riser	138	36
RJDP030	Reservoir Drip Pan for 30-50 Gallon JIC Reservoir With Riser	138	36
RJDP060	Reservoir Drip Pan for 60 Gallon JIC Reservoir With Riser	138	36
RJDP080	Reservoir Drip Pan for 80 Gallon JIC Reservoir With Riser	138	36
RJDP100	Reservoir Drip Pan for 100 Gallon JIC Reservoir With Riser	138	36
RJDP120	Reservoir Drip Pan for 120-150 Gallon JIC Reservoir With Riser	138	36
RJDP200	Reservoir Drip Pan for 200 Gallon JIC Reservoir With Riser	138	36
RJIC010-FT	JIC Style Reservoir, 10 Gallon Capacity with Fixed Top	124	33
RJIC010-RB	JIC Style Reservoir, 10 Gallon Capacity with Removable Top & Baffle	125	33
RJIC010-RT	JIC Style Reservoir, 10 Gallon Capacity with Removable Top	124	33
RJIC015-FT	JIC Style Reservoir, 15 Gallon Capacity with Fixed Top	124	33
RJIC015-RB	JIC Style Reservoir, 15 Gallon Capacity with Removable Top & Baffle	125	33
RJIC015-RT	JIC Style Reservoir, 15 Gallon Capacity with Removable Top	124	33
RJIC020-FT	JIC Style Reservoir, 20 Gallon Capacity with Fixed Top	124	33
RJIC020-RB	JIC Style Reservoir, 20 Gallon Capacity with Removable Top & Baffle	125	33
RJIC020-RT	JIC Style Reservoir, 20 Gallon Capacity with Removable Top	124	33
RJIC030-FT	JIC Style Reservoir, 30 Gallon Capacity with Fixed Top	124	33
RJIC030-RB	JIC Style Reservoir, 30 Gallon Capacity with Removable Top & Baffle	125	33
RJIC030-RT	JIC Style Reservoir, 30 Gallon Capacity with Removable Top	124	33
RJIC040-FT	JIC Style Reservoir, 40 Gallon Capacity with Fixed Top	124	33
RJIC040-RB	JIC Style Reservoir, 40 Gallon Capacity with Removable Top & Baffle	125	33
RJIC040-RT	JIC Style Reservoir, 40 Gallon Capacity with Removable Top	124	33
RJIC050-FT	JIC Style Reservoir, 50 Gallon Capacity with Fixed Top	124	33
RJIC050-RB	JIC Style Reservoir, 50 Gallon Capacity with Removable Top & Baffle	125	33
RJIC050-RT	JIC Style Reservoir, 50 Gallon Capacity with Removable Top	124	33
RJIC060-FT	JIC Style Reservoir, 60 Gallon Capacity with Fixed Top	124	33
RJIC060-RB	JIC Style Reservoir, 60 Gallon Capacity with Removable Top & Baffle	125	33
RJIC060-RT	JIC Style Reservoir, 60 Gallon Capacity with Removable Top	124	33
RJIC080-FT	JIC Style Reservoir, 80 Gallon Capacity with Fixed Top	124	33
RJIC080-RB	JIC Style Reservoir, 80 Gallon Capacity with Removable Top & Baffle	125	33
RJIC080-RT	JIC Style Reservoir, 80 Gallon Capacity with Removable Top	124	33
RJIC100-FT	JIC Style Reservoir, 100 Gallon Capacity with Fixed Top	124	33
RJIC100-RB	JIC Style Reservoir, 100 Gallon Capacity with Removable Top & Baffle	125	33



What is it, Where is it Index

Part Number	Description	Catag Page	Price Page
RJIC100-RT	JIC Style Reservoir, 100 Gallon Capacity with Removable Top	124	33
RJIC120-FT	JIC Style Reservoir, 120 Gallon Capacity with Fixed Top	124	33
RJIC120-RB	JIC Style Reservoir, 120 Gallon Capacity with Removable Top & Baffle	125	33
RJIC120-RT	JIC Style Reservoir, 120 Gallon Capacity with Removable Top	124	33
RJIC150-FT	JIC Style Reservoir, 150 Gallon Capacity with Fixed Top	124	33
RJIC150-RB	JIC Style Reservoir, 150 Gallon Capacity with Removable Top & Baffle	125	33
RJIC150-RT	JIC Style Reservoir, 150 Gallon Capacity with Removable Top	124	33
RJIC200-FT	JIC Style Reservoir, 200 Gallon Capacity with Fixed Top	124	33
RJIC200-RB	JIC Style Reservoir, 200 Gallon Capacity with Removable Top & Baffle	125	33
RJIC200-RT	JIC Style Reservoir, 200 Gallon Capacity with Removable Top	124	33
RJSM010	Reservoir Stacking Module for 10 Gallon JIC Reservoir	139	36
RJSM015	Reservoir Stacking Module for 15 Gallon JIC Reservoir	139	36
RJSM020	Reservoir Stacking Module for 20 Gallon JIC Reservoir	139	36
RJSM030	Reservoir Stacking Module for 30, 40 & 50 Gallon JIC Reservoir	139	36
RJSM060	Reservoir Stacking Module for 60 Gallon JIC Reservoir	139	36
RJSM080	Reservoir Stacking Module for 80 Gallon JIC Reservoir	139	36
RJSM100	Reservoir Stacking Module for 100 Gallon JIC Reservoir	139	36
RJSM120	Reservoir Stacking Module for 120 & 150 Gallon JIC Reservoir	139	36
RJSM200	Reservoir Stacking Module for 200 Gallon JIC Reservoir	139	36
RLC010-FT	L stle Reservoir, 10 Gallon Capacity with Fixed Top	126	33
RLC020-FT	L stle Reservoir, 20 Gallon Capacity with Fixed Top	126	33
RLC030-FT	L stle Reservoir, 30 Gallon Capacity with Fixed Top	126	33
RLC045-FT	L stle Reservoir, 45 Gallon Capacity with Fixed Top	126	33
RLC060-FT	L stle Reservoir, 60 Gallon Capacity with Fixed Top	126	33
RLC080-FT	L stle Reservoir, 80 Gallon Capacity with Fixed Top	126	33
RLC100-FT	L stle Reservoir, 100 Gallon Capacity with Fixed Top	126	33
RLC120-FT	L stle Reservoir, 120 Gallon Capacity with Fixed Top	126	33
RLC150-FT	L stle Reservoir, 150 Gallon Capacity with Fixed Top	126	33
RLC200-FT	L stle Reservoir, 200 Gallon Capacity with Fixed Top	126	33
RLF-008P	Reservoir Return Line Flange, 1/2" NPT	149	39
RLF-008T	Reservoir Return Line Flange, 1/2" Tube	149	39
RLF-012P	Reservoir Return Line Flange, 3/4" NPT	149	39
RLF-012T	Reservoir Return Line Flange, 3/4" Tube	149	39
RLF-100P	Reservoir Return Line Flange, 1" NPT	149	39
RLF-100T	Reservoir Return Line Flange, 1" Tube	149	39
RLF-104P	Reservoir Return Line Flange, 1 1/4" NPT	149	39
RLF-104T	Reservoir Return Line Flange, 1 1/4" Tube	149	39
RLF-108P	Reservoir Return Line Flange, 1 1/2" NPT	149	39
RLF-108T	Reservoir Return Line Flange, 1 1/2" Tube	149	39
RLF-200P	Reservoir Return Line Flange, 2" NPT	149	39
RLF-200T	Reservoir Return Line Flange, 2" Tube	149	39
RLFE-000P	Economy Reservoir Return Line Flange, Blank	150	39
RLFE-006T	Economy Reservoir Return Line Flange, 3/8" Tube	150	39
RLFE-008P	Economy Reservoir Return Line Flange, 1/2" NPT	150	39
RLFE-008T	Economy Reservoir Return Line Flange, 1/2" Tube	150	39
RLFE-012P	Economy Reservoir Return Line Flange, 3/4" NPT	150	39
RLFE-012T	Economy Reservoir Return Line Flange, 3/4" Tube	150	39
RLFE-100P	Economy Reservoir Return Line Flange, 1" NPT	150	39
RLFE-100T	Economy Reservoir Return Line Flange, 1" Tube	150	39
RLFE-104P	Economy Reservoir Return Line Flange, 1 1/4" NPT	150	39
RLFE-104T	Economy Reservoir Return Line Flange, 1 1/4" Tube	150	39
RLFE-108P	Economy Reservoir Return Line Flange, 1 1/2" NPT	150	39
RLFE-108T	Economy Reservoir Return Line Flange, 1 1/2" Tube	150	39
RLFE-200P	Economy Reservoir Return Line Flange, 2" NPT	150	39
RLFE-200T	Economy Reservoir Return Line Flange, 2" Tube	150	39
RLP010-HT	L Style Reservoir, 10 Gallon Capacity with Hinged Top	127	34
RLP010-RT	L Style Reservoir, 10 Gallon Capacity with Removable Top	127	33
RLP020-HT	L Style Reservoir, 20 Gallon Capacity with Hinged Top	128	34
RLP020-RT	L Style Reservoir, 20 Gallon Capacity with Removable Top	127	33
RLP030-HT	L Style Reservoir, 30 Gallon Capacity with Hinged Top	128	34
RLP030-RT	L Style Reservoir, 30 Gallon Capacity with Removable Top	127	33
RLP045-HT	L Style Reservoir, 45 Gallon Capacity with Hinged Top	128	34
RLP045-RT	L Style Reservoir, 45 Gallon Capacity with Removable Top	127	33
RLP060-HT	L Style Reservoir, 60 Gallon Capacity with Hinged Top	128	34
RLP060-RT	L Style Reservoir, 60 Gallon Capacity with Removable Top	127	33
RLP080-HT	L Style Reservoir, 80 Gallon Capacity with Hinged Top	128	34
RLP080-PHT	L Style Reservoir, 80 Gallon Capacity with Partially Hinged Top	129	34
RLP080-RT	L Style Reservoir, 80 Gallon Capacity with Removable Top	127	33

What is it, Where is it Index



Part Number	Description	Catag Page	Price Page
RLP100-HT	L Style Reservoir, 100 Gallon Capacity with Hinged Top	128	34
RLP100-PHT	L Style Reservoir, 100 Gallon Capacity with Partially Hinged Top	129	34
RLP100-RT	L Style Reservoir, 100 Gallon Capacity with Removable Top	127	33
RLP120-HT	L Style Reservoir, 120 Gallon Capacity with Hinged Top	128	34
RLP120-PHT	L Style Reservoir, 120 Gallon Capacity with Partially Hinged Top	129	34
RLP120-RT	L Style Reservoir, 120 Gallon Capacity with Removable Top	127	33
RLP150-HT	L Style Reservoir, 150 Gallon Capacity with Hinged Top	128	34
RLP150-PHT	L Style Reservoir, 150 Gallon Capacity with Partially Hinged Top	129	34
RLP150-RT	L Style Reservoir, 150 Gallon Capacity with Removable Top	127	33
RLP200-HT	L Style Reservoir, 200 Gallon Capacity with Hinged Top	128	34
RLP200-PHT	L Style Reservoir, 200 Gallon Capacity with Partially Hinged Top	129	34
RLP200-RT	L Style Reservoir, 200 Gallon Capacity with Removable Top	127	33
RTP010-HT	T Style Reservoir, 10 Gallon Capacity with Hinged Top	130	34
RTP020-HT	T Style Reservoir, 20 Gallon Capacity with Hinged Top	130	34
RTP030-HT	T Style Reservoir, 30 Gallon Capacity with Hinged Top	130	34
RTP045-HT	T Style Reservoir, 45 Gallon Capacity with Hinged Top	130	34
RTP060-HT	T Style Reservoir, 60 Gallon Capacity with Hinged Top	130	34
RTP080-HT	T Style Reservoir, 80 Gallon Capacity with Hinged Top	130	34
RTP080-PHT	T Style Reservoir, 80 Gallon Capacity with Partially Hinged Top	131	34
RTP100-HT	T Style Reservoir, 100 Gallon Capacity with Hinged Top	130	34
RTP100-PHT	T Style Reservoir, 100 Gallon Capacity with Partially Hinged Top	131	34
RTP120-HT	T Style Reservoir, 120 Gallon Capacity with Hinged Top	130	34
RTP120-PHT	T Style Reservoir, 120 Gallon Capacity with Partially Hinged Top	131	34
RTP150-HT	T Style Reservoir, 150 Gallon Capacity with Hinged Top	130	34
RTP150-PHT	T Style Reservoir, 150 Gallon Capacity with Partially Hinged Top	131	34
RTP200-HT	T Style Reservoir, 200 Gallon Capacity with Hinged Top	130	34
RTP200-PHT	T Style Reservoir, 200 Gallon Capacity with Partially Hinged Top	131	34
RTP300-HT	T Style Reservoir, 300 Gallon Capacity with Hinged Top	130	34
RTP400-HT	T Style Reservoir, 400 Gallon Capacity with Hinged Top	130	34
RV-C10-2-02	C10-2 Valve Cartridge for D03 Hi Flow Manifolds and All Bubplates, 50 - 200 psi	197	25
RV-C10-2-15	C10-2 Valve Cartridge for D03 Hi Flow Manifolds and All Bubplates, 50 - 1500 psi	197	25
RV-C10-2-30	C10-2 Valve Cartridge for D03 Hi Flow Manifolds and All Bubplates, 1500 - 3000 psi	197	25
RV-C10-2R-02	C10-2 Valve Cartridge for Old Style D03 & D03 Series Manifolds, 50 - 200 psi	197	25
RV-C10-2R-15	C10-2 Valve Cartridge for Old Style D03 & D03 Series Manifolds, 50 - 1500 psi	197	25
RV-C10-2R-30	C10-2 Valve Cartridge for Old Style D03 & D03 Series Manifolds, 1500 - 3000 psi	197	25
RVP02	Vertical ECONO Reservoir, 2 Gallon Capacity	117	32
RVP03	Vertical ECONO Reservoir, 3 Gallon Capacity	117	32
RVP05	Vertical ECONO Reservoir, 5 Gallon Capacity	117	32
RVP08	Vertical ECONO Reservoir, 8 Gallon Capacity	118	32
RVP10	Vertical ECONO Reservoir, 10 Gallon Capacity	118	32
RVP14	Vertical ECONO Reservoir, 14 Gallon Capacity	118	32
RVP20	Vertical ECONO Reservoir, 20 Gallon Capacity	119	32
RVP25	Vertical ECONO Reservoir, 25 Gallon Capacity	119	32
RVPT-1	ECONO Vertical Reservoir Cover Plate, Blank	120	32
RVPT-2	ECONO Vertical Reservoir Cover Plate, with 1/2" NPT Filler Breather Cutout	120	32
RVPT-3	ECONO Vertical Reservoir Cover Plate, with 1/2" NPT Filler Breather Cutout & 056 Mount Cutout	120	32
RVPT-4	ECONO Vertical Reservoir Cover Plate, with 1/2" NPT Filler Breather Cutout & 056 Mount Cutout & 1/2" NPT Connector	120	32
RVS05-1	Vertical Reservoir, 5 Gallon Capacity, Series 1	121	32
RVS10-2	Vertical Reservoir, 10 Gallon Capacity, Series 2	121	32
RVS10A-1	Vertical Reservoir, 10 Gallon Capacity, Series 1	121	32
RVS10B-2	Vertical Reservoir, 10 Gallon Capacity, Series 2	121	32
RVS1-T-1	Vertical Reservoir Cover Plate, Series 1, Blank	123	32
RVS1-T-2	Vertical Reservoir Cover Plate, Series 1, with Filler Breather Cutout	123	32
RVS1-T-3/A	Vertical Reservoir Cover Plate, Series 1, with Filler Breather Cutout & 056A Mount Cutout	123	32
RVS1-T-3/B	Vertical Reservoir Cover Plate, Series 1, with Filler Breather Cutout & 056B Mount Cutout	123	32
RVS1-T-4/C	Vertical Reservoir Cover Plate, Series 1, with Filler Breather Cutout & 182A Mount Cutout	123	32
RVS20-2	Vertical Reservoir, 20 Gallon Capacity, Series 2	121	32
RVS20-3	Vertical Reservoir, 20 Gallon Capacity, Series 3	121	32
RVS2-T-1	Vertical Reservoir Cover Plate, Series 2, Blank	123	32
RVS2-T-2	Vertical Reservoir Cover Plate, Series 2, with Filler Breather Cutout	123	32
RVS2-T-3/A	Vertical Reservoir Cover Plate, Series 2, with Filler Breather Cutout & 056A Mount Cutout	123	32
RVS2-T-3/B	Vertical Reservoir Cover Plate, Series 2, with Filler Breather Cutout & 056B Mount Cutout	123	32
RVS2-T-4/C	Vertical Reservoir Cover Plate, Series 2, with Filler Breather Cutout & 182A Mount Cutout	123	32
RVS2-T-4/D	Vertical Reservoir Cover Plate, Series 2, with Filler Breather Cutout & 182B Mount Cutout	123	32
RVS30-2	Vertical Reservoir, 30 Gallon Capacity, Series 2	121	32
RVS30-3	Vertical Reservoir, 30 Gallon Capacity, Series 3	121	32
RVS3-T-1	Vertical Reservoir Cover Plate, Series 3, Blank	123	32
RVS3-T-2	Vertical Reservoir Cover Plate, Series 3, with Filler Breather Cutout	123	32



What is it, Where is it Index

Part Number	Description	Catag Page	Price Page
RV53-T-3/A	Vertical Reservoir Cover Plate, Series 3, with Filler Breather Cutout & 056A Mount Cutout	123	32
RV53-T-3/B	Vertical Reservoir Cover Plate, Series 3, with Filler Breather Cutout & 056B Mount Cutout	123	32
RV53-T-4/C	Vertical Reservoir Cover Plate, Series 3, with Filler Breather Cutout & 182A Mount Cutout	123	32
RV53-T-4/D	Vertical Reservoir Cover Plate, Series 3, with Filler Breather Cutout & 182B Mount Cutout	123	32
RVS40-3	Vertical Reservoir, 40 Gallon Capacity, Series 3	121	32
RV-T10A-15	T-10A Valve Cartridge for D03 Hi Flow Manifolds and All Subplates, 1500 - 3000 psi	197	25
RV-T10A-30	T-10A Valve Cartridge for D03 Hi Flow Manifolds and All Subplates, 50 - 1500 psi	197	25
RV-T3A-08	T-3A Valve Cartridge for D05 Std Flow, D05 Hi Flow & D08 Manifolds, 25 - 800 psi	197	25
RV-T3A-15	T-3A Valve Cartridge for D05 Std Flow, D05 Hi Flow & D08 Manifolds, 50 - 1500 psi	197	25
RV-T3A-30	T-3A Valve Cartridge for D05 Std Flow, D05 Hi Flow & D08 Manifolds, 100 - 3000 psi	197	25
S056****45	Steel NEMA 056 Motor Mount w/Pump Holes Rotated 45 Degrees	44	10
S056****M8	Steel NEMA 056 Motor Mount w/4 Additional Holes on Motor End to Allow Rotating Mount +/-45 Degrees	44	10
S056****VW	Steel NEMA 056 Special Vertical Motor Mount for WorldWide Corp Motor	44	10
S056**100M	Steel NEMA 056 Motor Mount to Metric 100mm Pump	33	8
S056**100MV	Steel NEMA 056 Vertical Motor Mount to Metric 100mm Pump	36	9
S056**125M	Steel NEMA 056 Motor Mount to Metric 125mm Pump	33	8
S056**125MV	Steel NEMA 056 Vertical Motor Mount to Metric 125mm Pump	36	9
S056**2A	Steel NEMA 056 Motor Mount to SAE A Pump	33	8
S056**2AA	Steel NEMA 056 Motor Mount to SAE 2AA Pump	33	8
S056**2AAV	Steel NEMA 056 Vertical Motor Mount to SAE 2AA Pump	36	9
S056**2AV	Steel NEMA 056 Vertical Motor Mount to SAE A Pump	36	9
S056**2B	Steel NEMA 056 Motor Mount to SAE B Pump	33	8
S056**2BV	Steel NEMA 056 Vertical Motor Mount to SAE B Pump	36	9
S056**2C	Steel NEMA 056 Motor Mount to SAE C Pump	33	8
S056**2CV	Steel NEMA 056 Vertical Motor Mount to SAE C Pump	36	9
S056**4F	Steel NEMA 056 Motor Mount to USA4F17 Pump	33	8
S056**4FV	Steel NEMA 056 Vertical Motor Mount to USA4F17 Pump	36	9
S056**63M	Steel NEMA 056 Motor Mount to Metric 63mm Pump	33	8
S056**63MS	Steel NEMA 056 Motor Mount to Metric 63mm Special Pump	33	8
S056**63MSV	Steel NEMA 056 Vertical Motor Mount to Metric 63mm Special Pump	36	9
S056**63MV	Steel NEMA 056 Vertical Motor Mount to Metric 63mm Pump	36	9
S056**80M	Steel NEMA 056 Motor Mount to Metric 80mm Pump	33	8
S056**80MS	Steel NEMA 056 Motor Mount to Metric 80mm Special Pump	33	8
S056**80MSV	Steel NEMA 056 Vertical Motor Mount to Metric 80mm Special Pump	36	9
S056**80MV	Steel NEMA 056 Vertical Motor Mount to Metric 80mm Pump	36	9
S182****45	Steel NEMA 182 Motor Mount w/Pump Holes Rotated 45 Degrees	44	10
S182****M8	Steel NEMA 182 Motor Mount w/4 Additional Holes on Motor End to Allow Rotating Mount +/-45 Degrees	44	10
S182****VW	Steel NEMA 182 Special Vertical Motor Mount for WorldWide Corp Motor	44	10
S182**100M	Steel NEMA 182 Motor Mount to Metric 100mm Pump	34	8
S182**100MV	Steel NEMA 182 Vertical Motor Mount to Metric 100mm Pump	37	9
S182**125M	Steel NEMA 182 Motor Mount to Metric 125mm Pump	34	8
S182**125MV	Steel NEMA 182 Vertical Motor Mount to Metric 125mm Pump	37	9
S182**160M	Steel NEMA 182 Motor Mount to Metric 160mm Pump	34	8
S182**160MV	Steel NEMA 182 Vertical Motor Mount to Metric 160mm Pump	37	9
S182**180M	Steel NEMA 182 Motor Mount to Metric 180mm Pump	34	8
S182**180MV	Steel NEMA 182 Vertical Motor Mount to Metric 180mm Pump	37	9
S182**2A	Steel NEMA 182 Motor Mount to SAE A Pump	34	8
S182**2AA	Steel NEMA 182 Motor Mount to SAE 2AA Pump	34	8
S182**2AAV	Steel NEMA 182 Vertical Motor Mount to SAE 2AA Pump	37	9
S182**2AV	Steel NEMA 182 Vertical Motor Mount to SAE A Pump	37	9
S182**2B	Steel NEMA 182 Motor Mount to SAE B Pump	34	8
S182**2BV	Steel NEMA 182 Vertical Motor Mount to SAE B Pump	37	9
S182**2C	Steel NEMA 182 Motor Mount to SAE C Pump	34	8
S182**2CV	Steel NEMA 182 Vertical Motor Mount to SAE C Pump	37	9
S182**2D	Steel NEMA 182 Motor Mount to SAE D Pump	37	9
S182**2DV	Steel NEMA 182 Vertical Motor Mount to SAE D Pump	37	9
S182**4F	Steel NEMA 182 Motor Mount to USA4F17 Pump	34	8
S182**4FV	Steel NEMA 182 Vertical Motor Mount to USA4F17 Pump	37	9
S182**63M	Steel NEMA 182 Motor Mount to Metric 63mm Pump	34	8
S182**63MS	Steel NEMA 182 Motor Mount to Metric 63mm Special Pump	34	8
S182**63MSV	Steel NEMA 182 Vertical Motor Mount to Metric 63mm Special Pump	37	9
S182**63MV	Steel NEMA 182 Vertical Motor Mount to Metric 63mm Pump	37	9
S182**80M	Steel NEMA 182 Motor Mount to Metric 80mm Pump	34	8
S182**80MS	Steel NEMA 182 Motor Mount to Metric 80mm Special Pump	34	8
S182**80MSV	Steel NEMA 182 Vertical Motor Mount to Metric 80mm Special Pump	37	9
S182**80MV	Steel NEMA 182 Vertical Motor Mount to Metric 80mm Pump	37	9
S284****45	Steel NEMA 284 Motor Mount w/Pump Holes Rotated 45 Degrees	44	10
S284****M8	Steel NEMA 284 Motor Mount w/4 Additional Holes on Motor End to Allow Rotating Mount +/-45 Degrees	44	10

What is it, Where is it Index



Part Number	Description	Catag Page	Price Page
S284**100M	Steel NEMA 284 Motor Mount to Metric 100mm Pump	34	8
S284**100MV	Steel NEMA 284 Vertical Motor Mount to Metric 100mm Pump	37	9
S284**125M	Steel NEMA 284 Motor Mount to Metric 125mm Pump	34	8
S284**125MV	Steel NEMA 284 Vertical Motor Mount to Metric 125mm Pump	37	9
S284**160M	Steel NEMA 284 Motor Mount to Metric 160mm Pump	34	8
S284**160MV	Steel NEMA 284 Vertical Motor Mount to Metric 160mm Pump	37	9
S284**180M	Steel NEMA 284 Motor Mount to Metric 180mm Pump	34	8
S284**180MV	Steel NEMA 284 Vertical Motor Mount to Metric 180mm Pump	37	9
S284**200M	Steel NEMA 284 Motor Mount to Metric 200mm Pump	34	8
S284**200MV	Steel NEMA 284 Vertical Motor Mount to Metric 200mm Pump	37	9
S284**250M	Steel NEMA 284 Motor Mount to Metric 250mm Pump	34	8
S284**250MV	Steel NEMA 284 Vertical Motor Mount to Metric 250mm Pump	37	9
S284**2A	Steel NEMA 284 Motor Mount to SAE A Pump	34	8
S284**2AV	Steel NEMA 284 Vertical Motor Mount to SAE A Pump	37	9
S284**2B	Steel NEMA 284 Motor Mount to SAE B Pump	34	8
S284**2BV	Steel NEMA 284 Vertical Motor Mount to SAE B Pump	37	9
S284**2C	Steel NEMA 284 Motor Mount to SAE C Pump	34	8
S284**2CV	Steel NEMA 284 Vertical Motor Mount to SAE C Pump	37	9
S284**2D	Steel NEMA 284 Motor Mount to SAE D Pump	34	8
S284**2DV	Steel NEMA 284 Vertical Motor Mount to SAE D Pump	37	9
S284**2E	Steel NEMA 284 Motor Mount to SAE E Pump	34	8
S284**2EV	Steel NEMA 284 Vertical Motor Mount to SAE E Pump	37	9
S284**2F	Steel NEMA 284 Motor Mount to SAE F Pump	34	8
S284**2FV	Steel NEMA 284 Vertical Motor Mount to SAE F Pump	37	9
S324****45	Steel NEMA 444 Motor Mount w/Pump Holes Rotated 45 Degrees	44	10
S324****M8	Steel NEMA 444 Motor Mount w/4 Additional Holes on Motor End to Allow Rotating Mount +/-45 Degrees	44	10
S324****VW	Steel NEMA 324 Special Vertical Motor Mount for WorldWide Corp Motor	44	10
S324**100M	Steel NEMA 324 Motor Mount to Metric 100mm Pump	35	8
S324**100MV	Steel NEMA 324 Vertical Motor Mount to Metric 100mm Pump	35	8
S324**125M	Steel NEMA 324 Motor Mount to Metric 125mm Pump	35	8
S324**125MV	Steel NEMA 324 Vertical Motor Mount to Metric 125mm Pump	38	9
S324**160M	Steel NEMA 324 Motor Mount to Metric 160mm Pump	35	8
S324**160MV	Steel NEMA 324 Vertical Motor Mount to Metric 160mm Pump	38	9
S324**180M	Steel NEMA 324 Motor Mount to Metric 180mm Pump	35	8
S324**180MV	Steel NEMA 324 Vertical Motor Mount to Metric 180mm Pump	38	9
S324**200M	Steel NEMA 324 Motor Mount to Metric 200mm Pump	35	8
S324**200MV	Steel NEMA 324 Vertical Motor Mount to Metric 200mm Pump	38	9
S324**250M	Steel NEMA 324 Motor Mount to Metric 250mm Pump	35	8
S324**250MV	Steel NEMA 324 Vertical Motor Mount to Metric 250mm Pump	38	9
S324**2A	Steel NEMA 324 Motor Mount to SAE A Pump	35	8
S324**2AV	Steel NEMA 324 Vertical Motor Mount to SAE A Pump	38	9
S324**2B	Steel NEMA 324 Motor Mount to SAE B Pump	35	8
S324**2BV	Steel NEMA 324 Vertical Motor Mount to SAE B Pump	38	9
S324**2C	Steel NEMA 324 Motor Mount to SAE C Pump	35	8
S324**2CV	Steel NEMA 324 Vertical Motor Mount to SAE C Pump	38	9
S324**2D	Steel NEMA 324 Motor Mount to SAE D Pump	35	8
S324**2DV	Steel NEMA 324 Vertical Motor Mount to SAE D Pump	38	9
S324**2E	Steel NEMA 324 Motor Mount to SAE E Pump	35	8
S324**2EV	Steel NEMA 324 Vertical Motor Mount to SAE E Pump	38	9
S324**2F	Steel NEMA 324 Motor Mount to SAE F Pump	35	8
S324**2FV	Steel NEMA 324 Vertical Motor Mount to SAE F Pump	38	9
S444****45	Steel NEMA 444 Motor Mount w/Pump Holes Rotated 45 Degrees	44	10
S444****M8	Steel NEMA 444 Motor Mount w/4 Additional Holes on Motor End to Allow Rotating Mount +/-45 Degrees	44	10
S444**100M	NEMA 444 Motor Mount to Metric 100mm Pump	35	9
S444**100M	Steel NEMA 444 Motor Mount to Metric 100mm Pump	35	8
S444**100MV	Steel NEMA 444 Vertical Motor Mount to Metric 100mm Pump	38	9
S444**125M	NEMA 444 Motor Mount to Metric 125mm Pump	35	9
S444**125M	Steel NEMA 444 Motor Mount to Metric 125mm Pump	35	8
S444**125MV	Steel NEMA 444 Vertical Motor Mount to Metric 125mm Pump	38	9
S444**160M	NEMA 444 Motor Mount to Metric 160mm Pump	35	9
S444**160M	Steel NEMA 444 Motor Mount to Metric 160mm Pump	35	8
S444**160MV	Steel NEMA 444 Vertical Motor Mount to Metric 160mm Pump	38	9
S444**180M	NEMA 444 Motor Mount to Metric 180mm Pump	35	9
S444**180M	Steel NEMA 444 Motor Mount to Metric 180mm Pump	35	8
S444**180MV	Steel NEMA 444 Vertical Motor Mount to Metric 180mm Pump	38	9
S444**200M	Steel NEMA 444 Motor Mount to Metric 200mm Pump	35	8
S444**200MV	Steel NEMA 444 Vertical Motor Mount to Metric 200mm Pump	38	9
S444**250M	Steel NEMA 444 Motor Mount to Metric 250mm Pump	35	8



What is it, Where is it Index

Part Number	Description	Catag Page	Price Page
S444**250MV	Steel NEMA 444 Vertical Motor Mount to Metric 250mm Pump	38	9
S444**2A	Steel NEMA 444 Motor Mount to SAE A Pump	35	8
S444**2AV	Steel NEMA 444 Vertical Motor Mount to SAE A Pump	38	9
S444**2B	NEMA 444 Motor Mount to SAE B Pump	35	9
S444**2B	Steel NEMA 444 Motor Mount to SAE B Pump	35	8
S444**2BV	Steel NEMA 444 Vertical Motor Mount to SAE B Pump	38	9
S444**2C	NEMA 444 Motor Mount to SAE C Pump	35	9
S444**2C	Steel NEMA 444 Motor Mount to SAE C Pump	35	8
S444**2CV	Steel NEMA 444 Vertical Motor Mount to SAE C Pump	38	9
S444**2D	NEMA 444 Motor Mount to SAE D Pump	35	9
S444**2D	Steel NEMA 444 Motor Mount to SAE D Pump	35	8
S444**2DV	Steel NEMA 444 Vertical Motor Mount to SAE D Pump	38	9
S444**2E	Steel NEMA 444 Motor Mount to SAE E Pump	35	8
S444**2EV	Steel NEMA 444 Vertical Motor Mount to SAE E Pump	38	9
S444**2F	Steel NEMA 444 Motor Mount to SAE F Pump	35	8
S444**2FV	Steel NEMA 444 Vertical Motor Mount to SAE F Pump	38	9
SE575**100M	Steel 5.75" Pilot Engine Mount to Metric 100mm Pump	39	8
SE575**2A	Steel 5.75" Pilot Engine Mount to SAE A Pump	39	8
SE575**2AA	Steel 5.75" Pilot Engine Mount to SAE 2AA Pump	39	8
SE575**2B	Steel 5.75" Pilot Engine Mount to SAE B Pump	39	8
SE575**4F	Steel 5.75" Pilot Engine Mount to USA4F17 Pump	39	8
SE575**63M	Steel 5.75" Pilot Engine Mount to Metric 63mm Pump	39	8
SE575**63MS	Steel 5.75" Pilot Engine Mount to Metric 63mm Special Pump	39	8
SE575**80M	Steel 5.75" Pilot Engine Mount to Metric 80mm Pump	39	8
SE575**80MS	Steel 5.75" Pilot Engine Mount to Metric 80mm Special Pump	39	8
SE644**100M	Steel 6.44" Pilot Engine Mount to Metric 100mm Pump	40	8
SE644**125M	Steel 6.44" Pilot Engine Mount to Metric 125mm Pump	40	8
SE644**160M	Steel 6.44" Pilot Engine Mount to Metric 160mm Pump	40	8
SE644**180M	Steel 6.44" Pilot Engine Mount to Metric 180mm Pump	40	8
SE644**2A	Steel 6.44" Pilot Engine Mount to SAE A Pump	40	8
SE644**2AA	Steel 6.44" Pilot Engine Mount to SAE 2AA Pump	40	8
SE644**2B	Steel 6.44" Pilot Engine Mount to SAE B Pump	40	8
SE644**2C	Steel 6.44" Pilot Engine Mount to SAE C Pump	40	8
SE644**2D	Steel 6.44" Pilot Engine Mount to SAE D Pump	40	8
SE644**4F	Steel 6.44" Pilot Engine Mount to SAE USA4F17 Pump	40	8
SE644**63M	Steel 6.44" Pilot Engine Mount to Metric 63mm Pump	40	8
SE644**63MS	Steel 6.44" Pilot Engine Mount to Metric 63mm Special Pump	40	8
SE644**80M	Steel 6.44" Pilot Engine Mount to Metric 80mm Pump	40	8
SE644**80MS	Steel 6.44" Pilot Engine Mount to Metric 80mm Special Pump	40	8
SE700**100M	Steel 7.00" Pilot Engine Mount to Metric 100mm Pump	40	8
SE700**125M	Steel 7.00" Pilot Engine Mount to Metric 125mm Pump	40	8
SE700**160M	Steel 7.00" Pilot Engine Mount to Metric 160mm Pump	40	8
SE700**180M	Steel 7.00" Pilot Engine Mount to Metric 180mm Pump	40	8
SE700**2A	Steel 7.00" Pilot Engine Mount to SAE A Pump	40	8
SE700**2AA	Steel 7.00" Pilot Engine Mount to SAE 2AA Pump	40	8
SE700**2B	Steel 7.00" Pilot Engine Mount to SAE B Pump	40	8
SE700**2C	Steel 7.00" Pilot Engine Mount to SAE C Pump	40	8
SE700**2D	Steel 7.00" Pilot Engine Mount to SAE D Pump	40	8
SE700**4F	Steel 7.00" Pilot Engine Mount to SAE USA4F17 Pump	40	8
SE787**100M	Steel 7.87" Pilot Engine Mount to Metric 100mm Pump	41	8
SE787**125M	Steel 7.87" Pilot Engine Mount to Metric 125mm Pump	41	8
SE787**160M	Steel 7.87" Pilot Engine Mount to Metric 160mm Pump	41	8
SE787**180M	Steel 7.87" Pilot Engine Mount to Metric 180mm Pump	41	8
SE787**2A	Steel 7.87" Pilot Engine Mount to SAE A Pump	41	8
SE787**2AA	Steel 7.87" Pilot Engine Mount to SAE 2AA Pump	41	8
SE787**2B	Steel 7.87" Pilot Engine Mount to SAE B Pump	41	8
SE787**2C	Steel 7.87" Pilot Engine Mount to SAE C Pump	41	8
SE787**2D	Steel 7.87" Pilot Engine Mount to SAE D Pump	41	8
SE787**4F	Steel 7.87" Pilot Engine Mount to SAE USA4F17 Pump	41	8
SFH-B104/00-00-0.**	Spin-On Filter Head, 1 1/4" BSPT Inlet & Outlet Ports, No By-Pass, No Gauge Port, No Indicators	166	42
SFH-P104/00-00-0.**	Spin-On Filter Head, 1 1/4" NPT Inlet & Outlet Ports, No By-Pass, No Gauge Port, No Indicators	166	42
SFH-S104/00-00-0.**	Spin-On Filter Head, #20 SAE Inlet & Outlet Ports, No By-Pass, No Gauge Port, No Indicators	166	42
SLF-008P	Premium Suction Line Flange, 1/2" Pipe	141	39
SLF-008T	Premium Suction Line Flange, 1/2" Tube	141	39
SLF-012P	Premium Suction Line Flange, 3/4" Pipe	141	39
SLF-012T	Premium Suction Line Flange, 3/4" Tube	141	39
SLF-100P	Premium Suction Line Flange, 1" Pipe	141	39
SLF-100T	Premium Suction Line Flange, 1" Tube	141	39

What is it, Where is it Index



Part Number	Description	Catag Page	Price Page
SLF-104P	Premium Suction Line Flange, 1 1/4" Pipe	141	39
SLF-104T	Premium Suction Line Flange, 1 1/4" Tube	141	39
SLF-108P	Premium Suction Line Flange, 1 1/2" Pipe	141	39
SLF-108T	Premium Suction Line Flange, 1 1/2" Tube	141	39
SLF-200P	Premium Suction Line Flange, 2" Pipe	141	39
SLF-200T	Premium Suction Line Flange, 2" Tube	141	39
SLFE-500-000P	Economy Suction Line Flange, 4 1/2" Cutout, Blank	151	39
SLFE-500-006T	Economy Suction Line Flange, 4 1/2" Cutout, 3/8" Tube	151	39
SLFE-500-008P	Economy Suction Line Flange, 4 1/2" Cutout, 1/2" Pipe	151	39
SLFE-500-008T	Economy Suction Line Flange, 4 1/2" Cutout, 1/2" Tube	151	39
SLFE-500-012P	Economy Suction Line Flange, 4 1/2" Cutout, 3/4" Pipe	151	39
SLFE-500-012T	Economy Suction Line Flange, 4 1/2" Cutout, 3/4" Tube	151	39
SLFE-500-100P	Economy Suction Line Flange, 4 1/2" Cutout, 1" Pipe	151	39
SLFE-500-100T	Economy Suction Line Flange, 4 1/2" Cutout, 1" Tube	151	39
SLFE-500-104P	Economy Suction Line Flange, 4 1/2" Cutout, 1 1/4" Pipe	151	39
SLFE-500-104T	Economy Suction Line Flange, 4 1/2" Cutout, 1 1/4" Tube	151	39
SLFE-500-108P	Economy Suction Line Flange, 4 1/2" Cutout, 1 1/2" Pipe	151	39
SLFE-500-108T	Economy Suction Line Flange, 4 1/2" Cutout, 1 1/2" Tube	151	39
SLFE-500-200P	Economy Suction Line Flange, 4 1/2" Cutout, 2" Pipe	151	39
SLFE-700-108P	Economy Suction Line Flange, 6 1/2" Cutout, 1 1/2" Pipe	151	39
SLFE-700-200P	Economy Suction Line Flange, 6 1/2" Cutout, 2" Pipe	151	39
SLFE-700-208P	Economy Suction Line Flange, 6 1/2" Cutout, 2 1/2" Pipe	151	39
SLFE-700-300P	Economy Suction Line Flange, 6 1/2" Cutout, 3" Pipe	151	39
SLLG-03T	Standard Line Liquid Level Gauge, 3" with Temp.	179	45
SLLG-03T-C	Standard Line Liquid Level Gauge, 3" with Temp. & Protective Cover	179	45
SLLG-05T	Standard Line Liquid Level Gauge, 5" with Temp.	179	45
SLLG-05T-C	Standard Line Liquid Level Gauge, 5" with Temp. & Protective Cover	179	45
SLLG-10C	Standard Line Liquid Level Gauge, 10" with Temp.	179	45
SLLG-10T	Standard Line Liquid Level Gauge, 10" with Temp. & Protective Cover	179	45
SLSG-100	Sight Glass Style Liquid Level Gauge	179	45
SP-A03*4-1/DZ	D03 Aluminum Super Saver Down Side Ported Subplate - Size 4 Threads	78	21
SP-A03*4-1/PZ	D03 Aluminum Super Saver Perimeter Ported Subplate - Size 4 Threads	77	21
SP-A03*6-1/BC	D03 Aluminum Bottom Ported Subplate - Size 6 Threads w/C-10-2 Common Cavity	81	21
SP-A03*6-1/BS	D03 Aluminum Bottom Ported Subplate - Size 6 Threads w/T-10A Sun Cavity	81	21
SP-A03*6-1/BZ	D03 Aluminum Bottom Ported Subplate - Size 6 Threads	81	21
SP-A03*6-1/C	D03 Aluminum Side Ported Subplate - Size 6 Threads w/C-10-2 Common Cavity	81	21
SP-A03*6-1/DZ	D03 Aluminum Super Saver Down Side Ported Subplate - Size 6 Threads	78	21
SP-A03*6-1/PZ	D03 Aluminum Super Saver Perimeter Ported Subplate - Size 6 Threads	77	21
SP-A03*6-1/S	D03 Aluminum Side Ported Subplate - Size 6 Threads w/T-10A Sun Cavity	81	21
SP-A03*6-1/Z	D03 Aluminum Side Ported Subplate - Size 6 Threads	81	21
SP-A03*8-1/BC	D03 Aluminum Bottom Ported Subplate - Size 8 Threads w/C-10-2 Common Cavity	81	21
SP-A03*8-1/BS	D03 Aluminum Bottom Ported Subplate - Size 8 Threads w/T-10A Sun Cavity	81	21
SP-A03*8-1/BZ	D03 Aluminum Bottom Ported Subplate - Size 8 Threads	81	21
SP-A03*8-1/C	D03 Aluminum Side Ported Subplate - Size 8 Threads w/C-10-2 Common Cavity	81	21
SP-A03*8-1/S	D03 Aluminum Side Ported Subplate - Size 8 Threads w/T-10A Sun Cavity	81	21
SP-A03*8-1/Z	D03 Aluminum Side Ported Subplate - Size 8 Threads	81	21
SP-A05*6-1/BC	D05 Aluminum Bottom Ported Subplate - Size 6 Threads w/C-10-2 Common Cavity	82	22
SP-A05*6-1/BS	D05 Aluminum Bottom Ported Subplate - Size 6 Threads w/T-10A Sun Cavity	82	22
SP-A05*6-1/BZ	D05 Aluminum Bottom Ported Subplate - Size 6 Threads	82	22
SP-A05*6-1/C	D05 Aluminum Side Ported Subplate - Size 6 Threads w/C-10-2 Common Cavity	82	22
SP-A05*6-1/DZ	D05 Aluminum Super Saver Down Side Ported Subplate - Size 6 Threads	80	21
SP-A05*6-1/PZ	D05 Aluminum Super Saver Perimeter Ported Subplate - Size 6 Threads	79	21
SP-A05*6-1/S	D05 Aluminum Side Ported Subplate - Size 6 Threads w/T-10A Sun Cavity	82	22
SP-A05*6-1/Z	D05 Aluminum Side Ported Subplate - Size 6 Threads	82	22
SP-A05*8-1/BC	D05 Aluminum Bottom Ported Subplate - Size 8 Threads w/C-10-2 Common Cavity	82	22
SP-A05*8-1/BS	D05 Aluminum Bottom Ported Subplate - Size 8 Threads w/T-10A Sun Cavity	82	22
SP-A05*8-1/BZ	D05 Aluminum Bottom Ported Subplate - Size 8 Threads	82	22
SP-A05*8-1/C	D05 Aluminum Side Ported Subplate - Size 8 Threads w/C-10-2 Common Cavity	82	22
SP-A05*8-1/DZ	D05 Aluminum Super Saver Down Side Ported Subplate - Size 8 Threads	80	21
SP-A05*8-1/PZ	D05 Aluminum Super Saver Perimeter Ported Subplate - Size 8 Threads	79	21
SP-A05*8-1/S	D05 Aluminum Side Ported Subplate - Size 8 Threads w/T-10A Sun Cavity	82	22
SP-A05*8-1/Z	D05 Aluminum Side Ported Subplate - Size 8 Threads	82	22
SP-A08*12-1/BC	D05 Aluminum Bottom Ported Subplate - Size 12 Threads w/C-10-2 Common Cavity	84	23
SP-A08*12-1/BS	D05 Aluminum Bottom Ported Subplate - Size 12 Threads w/T-10A Sun Cavity	84	23
SP-A08*12-1/BZ	D05 Aluminum Bottom Ported Subplate - Size 12 Threads	84	23
SP-A08*12-1/C	D08 Aluminum Side Ported Subplate - Size 12 Threads w/C-10-2 Common Cavity	84	23
SP-A08*12-1/S	D08 Aluminum Side Ported Subplate - Size 12 Threads w/T-10A Sun Cavity	84	23
SP-A08*12-1/Z	D08 Aluminum Side Ported Subplate - Size 12 Threads	84	23



What is it, Where is it Index

Part Number	Description	Catag Page	Price Page
SP-A08*16-1/BC	D08 Aluminum Bottom Ported Subplate - Size 16 Threads w/C-10-2 Common Cavity	84	23
SP-A08*16-1/BS	D08 Aluminum Bottom Ported Subplate - Size 16 Threads w/T-10A Sun Cavity	84	23
SP-A08*16-1/BZ	D08 Aluminum Bottom Ported Subplate - Size 16 Threads	84	23
SP-A08*16-1/C	D08 Aluminum Side Ported Subplate - Size 16 Threads w/C-10-2 Common Cavity	84	23
SP-A08*16-1/S	D08 Aluminum Side Ported Subplate - Size 16 Threads w/T-10A Sun Cavity	84	23
SP-A08*16-1/Z	D08 Aluminum Side Ported Subplate - Size 16 Threads	84	23
SP-AH05*12-1/BC	D05 Aluminum High Flow Bottom Ported Subplate - Size 12 Threads w/C-10-2 Common Cavity	83	22
SP-AH05*12-1/BS	D05 Aluminum High Flow Bottom Ported Subplate - Size 12 Threads w/T-10A Sun Cavity	83	22
SP-AH05*12-1/BZ	D05 Aluminum High Flow Bottom Ported Subplate - Size 12 Threads	83	22
SP-AH05*12-1/C	D05 Aluminum High Flow Side Ported Subplate - Size 12 Threads w/C-10-2 Common Cavity	83	22
SP-AH05*12-1/S	D05 Aluminum High Flow Side Ported Subplate - Size 12 Threads w/T-10A Sun Cavity	83	22
SP-AH05*12-1/Z	D05 Aluminum High Flow Side Ported Subplate - Size 12 Threads	83	22
SP-S03*4-1/DZ	D03 Steel Super Saver Down Side Ported Subplate - Size 4 Threads	78	21
SP-S03*4-1/PZ	D03 Steel Super Saver Perimeter Ported Subplate - Size 4 Threads	77	21
SP-S03*6-1/BC	D03 Steel Bottom Ported Subplate - Size 6 Threads w/C-10-2 Common Cavity	81	21
SP-S03*6-1/BS	D03 Steel Bottom Ported Subplate - Size 6 Threads w/T-10A Sun Cavity	81	21
SP-S03*6-1/BZ	D03 Steel Bottom Ported Subplate - Size 6 Threads	81	21
SP-S03*6-1/C	D03 Steel Side Ported Subplate - Size 6 Threads w/C-10-2 Common Cavity	81	21
SP-S03*6-1/DZ	D03 Steel Super Saver Down Side Ported Subplate - Size 6 Threads	78	21
SP-S03*6-1/PZ	D03 Steel Super Saver Perimeter Ported Subplate - Size 6 Threads	77	21
SP-S03*6-1/S	D03 Steel Side Ported Subplate - Size 6 Threads w/T-10A Sun Cavity	81	21
SP-S03*6-1/Z	D03 Steel Side Ported Subplate - Size 6 Threads	81	21
SP-S03*8-1/BC	D03 Steel Bottom Ported Subplate - Size 8 Threads w/C-10-2 Common Cavity	81	21
SP-S03*8-1/BS	D03 Steel Bottom Ported Subplate - Size 8 Threads w/T-10A Sun Cavity	81	21
SP-S03*8-1/BZ	D03 Steel Bottom Ported Subplate - Size 8 Threads	81	21
SP-S03*8-1/C	D03 Steel Side Ported Subplate - Size 8 Threads w/C-10-2 Common Cavity	81	21
SP-S03*8-1/S	D03 Steel Side Ported Subplate - Size 8 Threads w/T-10A Sun Cavity	81	21
SP-S03*8-1/Z	D03 Steel Side Ported Subplate - Size 8 Threads	81	21
SP-S05*6-1/BC	D05 Steel Bottom Ported Subplate - Size 6 Threads w/C-10-2 Common Cavity	82	22
SP-S05*6-1/BS	D05 Steel Bottom Ported Subplate - Size 6 Threads w/T-10A Sun Cavity	82	22
SP-S05*6-1/BZ	D05 Steel Bottom Ported Subplate - Size 6 Threads	82	22
SP-S05*6-1/C	D05 Steel Side Ported Subplate - Size 6 Threads w/C-10-2 Common Cavity	82	22
SP-S05*6-1/DZ	D05 Steel Super Saver Down Side Ported Subplate - Size 6 Threads	80	21
SP-S05*6-1/PZ	D05 Steel Super Saver Perimeter Ported Subplate - Size 6 Threads	79	21
SP-S05*6-1/S	D03 Steel Side Ported Subplate - Size 6 Threads w/T-10A Sun Cavity	82	22
SP-S05*6-1/Z	D03 Steel Side Ported Subplate - Size 6 Threads	82	22
SP-S05*8-1/BC	D05 Steel Bottom Ported Subplate - Size 8 Threads w/C-10-2 Common Cavity	82	22
SP-S05*8-1/BS	D05 Steel Bottom Ported Subplate - Size 8 Threads w/T-10A Sun Cavity	82	22
SP-S05*8-1/BZ	D05 Steel Bottom Ported Subplate - Size 8 Threads	82	22
SP-S05*8-1/C	D05 Steel Side Ported Subplate - Size 8 Threads w/C-10-2 Common Cavity	82	22
SP-S05*8-1/DZ	D05 Steel Super Saver Down Side Ported Subplate - Size 8 Threads	80	21
SP-S05*8-1/PZ	D05 Steel Super Saver Perimeter Ported Subplate - Size 8 Threads	79	21
SP-S05*8-1/S	D03 Steel Side Ported Subplate - Size 8 Threads w/T-10A Sun Cavity	82	22
SP-S05*8-1/Z	D03 Steel Side Ported Subplate - Size 8 Threads	82	22
SP-S08*12-1/BC	D05 Steel Bottom Ported Subplate - Size 12 Threads w/C-10-2 Common Cavity	84	23
SP-S08*12-1/BS	D05 Steel Bottom Ported Subplate - Size 12 Threads w/T-10A Sun Cavity	84	23
SP-S08*12-1/BZ	D05 Steel Bottom Ported Subplate - Size 12 Threads	84	23
SP-S08*12-1/C	D08 Steel Side Ported Subplate - Size 12 Threads w/C-10-2 Common Cavity	84	23
SP-S08*12-1/S	D08 Steel Side Ported Subplate - Size 12 Threads w/T-10A Sun Cavity	84	23
SP-S08*12-1/Z	D08 Steel Side Ported Subplate - Size 12 Threads	84	23
SP-S08*16-1/BC	D08 Steel Bottom Ported Subplate - Size 16 Threads w/C-10-2 Common Cavity	84	23
SP-S08*16-1/BS	D08 Steel Bottom Ported Subplate - Size 16 Threads w/T-10A Sun Cavity	84	23
SP-S08*16-1/BZ	D08 Steel Bottom Ported Subplate - Size 16 Threads	84	23
SP-S08*16-1/C	D08 Steel Side Ported Subplate - Size 16 Threads w/C-10-2 Common Cavity	84	23
SP-S08*16-1/S	D08 Steel Side Ported Subplate - Size 16 Threads w/T-10A Sun Cavity	84	23
SP-S08*16-1/Z	D08 Steel Side Ported Subplate - Size 16 Threads	84	23
SP-SH05*12-1/BC	D08 Steel Bottom Ported Subplate - Size 12 Threads w/C-10-2 Common Cavity	83	22
SP-SH05*12-1/BS	D08 Steel Bottom Ported Subplate - Size 12 Threads w/T-10A Sun Cavity	83	22
SP-SH05*12-1/BZ	D08 Steel Bottom Ported Subplate - Size 12 Threads	83	22
SP-SH05*12-1/C	D08 Steel Side Ported Subplate - Size 12 Threads w/C-10-2 Common Cavity	83	22
SP-SH05*12-1/S	D08 Steel Side Ported Subplate - Size 12 Threads w/T-10A Sun Cavity	83	22
SP-SH05*12-1/Z	D08 Steel Side Ported Subplate - Size 12 Threads	83	22
SS-003P006-1-*	Suction Strainer, Internally Mounted, 3 GPM, 100 Mesh, 3/8" NPT Outlet, w/By-Pass	163	41
SS-003P006-1-0	Suction Strainer, Internally Mounted, 3 GPM, 100 Mesh, 3/8" NPT Outlet, No By-Pass	163	41
SS-005P008-1-*	Suction Strainer, Internally Mounted, 5 GPM, 100 Mesh, 1/2" NPT Outlet, w/By-Pass	163	41
SS-005P008-1-0	Suction Strainer, Internally Mounted, 5 GPM, 100 Mesh, 1/2" NPT Outlet, No By-Pass	163	41
SS-008P012/P104-**	Suction Strainer, 1 1/4" NPT Externally Mounted, 8 GPM, 100 Mesh, 3/4" NPT Outlet, w/By-Pass	164	41
SS-008P012/P104-*0	Suction Strainer, 1 1/4" NPT Externally Mounted, 8 GPM, 100 Mesh, 3/4" NPT Outlet, No By-Pass	164	41

What is it, Where is it Index



Part Number	Description	Catag Page	Price Page
SS-008P012-1.*	Suction Strainer, Internally Mounted, 8 GPM, 100 Mesh, 3/4" NPT Outlet, w/By-Pass	163	41
SS-008P012-1-0	Suction Strainer, Internally Mounted, 8 GPM, 100 Mesh, 3/4" NPT Outlet, No By-Pass	163	41
SS-010P100-1.*	Suction Strainer, Internally Mounted, 10 GPM, 100 Mesh, 1" NPT Outlet, w/By-Pass	163	41
SS-010P100-1-0	Suction Strainer, Internally Mounted, 10 GPM, 100 Mesh, 1" NPT Outlet, No By-Pass	163	41
SS-014P100/P108-.*.*	Suction Strainer, 1 1/2" NPT Externally Mounted, 14 GPM, 100 Mesh, 1" NPT Outlet, w/By-Pass	164	41
SS-014P100/P108-.*.0	Suction Strainer, 1 1/2" NPT Externally Mounted, 14 GPM, 100 Mesh, 1" NPT Outlet, No By-Pass	164	41
SS-014P100/P300-.*.*	Suction Strainer, 3" NPT Externally Mounted, 14 GPM, 100 Mesh, 1" NPT Outlet, w/By-Pass	164	41
SS-014P100/P300-.*.0	Suction Strainer, 3" NPT Externally Mounted, 14 GPM, 100 Mesh, 1" NPT Outlet, No By-Pass	164	41
SS-014S020/P300-.*.*	Suction Strainer, 3" NPT Externally Mounted, 14 GPM, 100 Mesh, #20 SAE Outlet, w/By-Pass	164	41
SS-014S020/P300-.*.0	Suction Strainer, 3" NPT Externally Mounted, 14 GPM, 100 Mesh, #20 SAE Outlet, No By-Pass	164	41
SS-021024/P300-.*.*	Suction Strainer, 3" NPT Externally Mounted, 21 GPM, 100 Mesh, #24 SAE Outlet, w/By-Pass	164	41
SS-021024/P300-.*.0	Suction Strainer, 3" NPT Externally Mounted, 21 GPM, 100 Mesh, #24 SAE Outlet, No By-Pass	164	41
SS-023P104/P200-.*.*	Suction Strainer, 2" NPT Externally Mounted, 23 GPM, 100 Mesh, 1 1/4" NPT Outlet, w/By-Pass	164	41
SS-023P104/P200-.*.0	Suction Strainer, 2" NPT Externally Mounted, 23 GPM, 100 Mesh, 1 1/4" NPT Outlet, No By-Pass	164	41
SS-023P104/P300-.*.*	Suction Strainer, 3" NPT Externally Mounted, 23 GPM, 100 Mesh, 1 1/4" NPT Outlet, w/By-Pass	164	41
SS-023P104/P300-.*.0	Suction Strainer, 3" NPT Externally Mounted, 23 GPM, 100 Mesh, 1 1/4" NPT Outlet, No By-Pass	164	41
SS-023P104-1.*	Suction Strainer, Internally Mounted, 23 GPM, 100 Mesh, 1 1/4" NPT Outlet, w/By-Pass	163	41
SS-023P104-1-0	Suction Strainer, Internally Mounted, 23 GPM, 100 Mesh, 1 1/4" NPT Outlet, No By-Pass	163	41
SS-032P108-.*.*	Suction Strainer, Internally Mounted, 32 GPM, 100 Mesh, 1 1/2" NPT Outlet, w/By-Pass	163	41
SS-032P108-.*.0	Suction Strainer, Internally Mounted, 32 GPM, 100 Mesh, 1 1/2" NPT Outlet, No By-Pass	163	41
SS-032P108/P300-.*.*	Suction Strainer, 3" NPT Externally Mounted, 32 GPM, 100 Mesh, 1 1/2" NPT Outlet, w/By-Pass	164	41
SS-032P108/P300-.*.0	Suction Strainer, 3" NPT Externally Mounted, 32 GPM, 100 Mesh, 1 1/2" NPT Outlet, No By-Pass	164	41
SS-053P200-.*.*	Suction Strainer, Internally Mounted, 53 GPM, 100 Mesh, 2" NPT Outlet, w/By-Pass	163	41
SS-053P200-.*.0	Suction Strainer, Internally Mounted, 53 GPM, 100 Mesh, 2" NPT Outlet, No By-Pass	163	41
SS-053P200/P300-.*.*	Suction Strainer, 3" NPT Externally Mounted, 53 GPM, 100 Mesh, 2" NPT Outlet, w/By-Pass	164	41
SS-053P200/P300-.*.0	Suction Strainer, 3" NPT Externally Mounted, 53 GPM, 100 Mesh, 2" NPT Outlet, No By-Pass	164	41
SS-053P200/P400-.*.*	Suction Strainer, 4" NPT Externally Mounted, 53 GPM, 100 Mesh, 2" NPT Outlet, w/By-Pass	164	41
SS-053P200/P400-.*.0	Suction Strainer, 4" NPT Externally Mounted, 53 GPM, 100 Mesh, 2" NPT Outlet, No By-Pass	164	41
SS-075P208-.*.*	Suction Strainer, Internally Mounted, 75 GPM, 100 Mesh, 2 1/2" NPT Outlet, w/By-Pass	163	41
SS-075P208-.*.0	Suction Strainer, Internally Mounted, 75 GPM, 100 Mesh, 2 1/2" NPT Outlet, No By-Pass	163	41
SS-075P208/P400-.*.*	Suction Strainer, 4" NPT Externally Mounted, 75 GPM, 100 Mesh, 2 1/2" NPT Outlet, w/By-Pass	164	41
SS-075P208/P400-.*.0	Suction Strainer, 4" NPT Externally Mounted, 75 GPM, 100 Mesh, 2 1/2" NPT Outlet, No By-Pass	164	41
SS-116P300-.*.*	Suction Strainer, Internally Mounted, 116 GPM, 100 Mesh, 3" NPT Outlet, w/By-Pass	163	41
SS-116P300-.*.0	Suction Strainer, Internally Mounted, 116 GPM, 100 Mesh, 3" NPT Outlet, No By-Pass	163	41
SSFE-003-067	Spin-On Filter Synthetic Media Element, 3 Micron, 1 1/2-16 UN Mounting Thread, 6.7" Length	167	42
SSFE-003-107	Spin-On Filter Synthetic Media Element, 3 Micron, 1 1/2-16 UN Mounting Thread, 10.7" Length	167	42
SSFE-010-067	Spin-On Filter Synthetic Media Element, 10 Micron, 1 1/2-16 UN Mounting Thread, 6.7" Length	167	42
SSFE-010-107	Spin-On Filter Synthetic Media Element, 10 Micron, 1 1/2-16 UN Mounting Thread, 10.7" Length	167	42
SSFE-025-067	Spin-On Filter Synthetic Media Element, 25 Micron, 1 1/2-16 UN Mounting Thread, 6.7" Length	167	42
SSFE-025-107	Spin-On Filter Synthetic Media Element, 25 Micron, 1 1/2-16 UN Mounting Thread, 10.7" Length	167	42
STTE-ASR-003-092-OI	Tank Top Filter Synthetic Media Element for AL S/R Line Series, 3 Micron, 9.19" Length, O/I Flow	164	43
STTE-ASR-003-182-OI	Tank Top Filter Synthetic Media Element for AL S/R Line Series, 3 Micron, 18.19" Length, O/I Flow	164	43
STTE-ASR-010-092-OI	Tank Top Filter Synthetic Media Element for AL S/R Line Series, 10 Micron, 9.19" Length, O/I Flow	164	43
STTE-ASR-010-182-OI	Tank Top Filter Synthetic Media Element for AL S/R Line Series, 10 Micron, 18.19" Length, O/I Flow	164	43
STTE-SSR-003-092-OI	Tank Top Filter Synthetic Media Element for Steel S/R Line Series, 3 Micron, 9.19" Length, O/I Flow	164	43
STTE-SSR-003-182-OI	Tank Top Filter Synthetic Media Element for Steel S/R Line Series, 3 Micron, 18.19" Length, O/I Flow	164	43
STTE-SSR-010-092-OI	Tank Top Filter Synthetic Media Element for Steel S/R Line Series, 10 Micron, 9.19" Length, O/I Flow	164	43
STTE-SSR-010-182-OI	Tank Top Filter Synthetic Media Element for Steel S/R Line Series, 10 Micron, 18.19" Length, O/I Flow	164	43
STT-ITB-03A	Tank Top Filter Media Element for Integral Breather Series, 3 Micron	169	43
STT-ITB-10A	Tank Top Filter Media Element for Integral Breather Series, 103 Micron	169	43
TD-014P008-D1	Tank Diffuser, 14 GPM, 1/2" NPT Mounting Threads, 1.3" OD	165	42
TD-014P008-D2	Tank Diffuser, 14 GPM, 1/2" NPT Mounting Threads, 3.2" OD	165	42
TD-025P012-D1	Tank Diffuser, 25 GPM, 3/4" NPT Mounting Threads, 1.7" OD	165	42
TD-025P012-D2	Tank Diffuser, 25 GPM, 3/4" NPT Mounting Threads, 3.2" OD	165	42
TD-040P100-D1	Tank Diffuser, 40 GPM, 1" NPT Mounting Threads, 1.9" OD	165	42
TD-040P100-D2	Tank Diffuser, 40 GPM, 1" NPT Mounting Threads, 3.2" OD	165	42
TD-070P104-D1	Tank Diffuser, 70 GPM, 1 1/4" NPT Mounting Threads, 3.2" OD	165	42
TD-095P108-D1	Tank Diffuser, 95 GPM, 1 1/2" NPT Mounting Threads, 3.2" OD	165	42
TD-157P200-D1	Tank Diffuser, 157 GPM, 2" NPT Mounting Threads, 4.2" OD	165	42
TD-224P208-D1	Tank Diffuser, 224 GPM, 2 1/2" NPT Mounting Threads, 4.2" OD	165	42
TTF-ASR-B104/000-.*.*.*-0	AL Tank Top Filter, S/R Line Series, 1 1/4" BSPT Left Port, No Right Port, By-Pass, Gauge Port, No Check Valve	171	43
TTF-ASR-B104/000-.*.*.*-V	AL Tank Top Filter, S/R Line Series, 1 1/4" BSPT Left Port, No Right Port, By-Pass, Gauge Port, w/Check Valve	171	43
TTF-ASR-B104/000-00-00-0	AL Tank Top Filter, S/R Line Series, 1 1/4" BSPT Left Port, No Right Port, No By-Pass, No Gauge Port, No Check Valve	171	43
TTF-ASR-B104/000-00-00-V	AL Tank Top Filter, S/R Line Series, 1 1/4" BSPT Left Port, No Right Port, No By-Pass, No Gauge Port, w/Check Valve	171	43
TTF-ASR-B104/B104-.*.*.*-0	AL Tank Top Filter, S/R Line Series, 1 1/4" BSPT Left and Right Ports, By-Pass, Gauge Port, No Check Valve	171	43
TTF-ASR-B104/B104-.*.*.*-V	AL Tank Top Filter, S/R Line Series, 1 1/4" BSPT Left and Right Ports, By-Pass, Gauge Port, w/Check Valve	171	43
TTF-ASR-B104/B104-00-00-0	AL Tank Top Filter, S/R Line Series, 1 1/4" BSPT Left and Right Ports, No By-Pass, No Gauge Port, No Check Valve	171	43
TTF-ASR-B104/B104-00-00-V	AL Tank Top Filter, S/R Line Series, 1 1/4" BSPT Left and Right Ports, No By-Pass, No Gauge Port, w/Check Valve	171	43

What is it, Where is it Index



Part Number	Description	Catalg Page	Price Page
TTF-SSR-P108/P108-00-00-0	Steel Tank Top Filter, S/R Line Series, 1 1/2" NPT Left and Right Ports, No By-Pass, No Gauge Port, No Check Valve	163	43
TTF-SSR-P108/P108-00-00-V	Steel Tank Top Filter, S/R Line Series, 1 1/2" NPT Left and Right Ports, No By-Pass, No Gauge Port, w/Check Valve	163	43
TTF-SSR-S020/000-**-**-0	Steel Tank Top Filter, S/R Line Series, #20 SAE Left Port, No Right Port, By-Pass, Gauge Port, No Check Valve	163	43
TTF-SSR-S020/000-**-**-V	Steel Tank Top Filter, S/R Line Series, #20 SAE Left Port, No Right Port, By-Pass, Gauge Port, w/Check Valve	163	43
TTF-SSR-S020/000-00-00-0	Steel Tank Top Filter, S/R Line Series, #20 SAE Left Port, No Right Port, No By-Pass, No Gauge Port, No Check Valve	163	43
TTF-SSR-S020/000-00-00-V	Steel Tank Top Filter, S/R Line Series, #20 SAE Left Port, No Right Port, No By-Pass, No Gauge Port, w/Check Valve	163	43
TTF-SSR-S020/S020-**-**-0	Steel Tank Top Filter, S/R Line Series, #20 SAE Left and Right Ports, By-Pass, Gauge Port, No Check Valve	163	43
TTF-SSR-S020/S020-**-**-V	Steel Tank Top Filter, S/R Line Series, #20 SAE Left and Right Ports, By-Pass, Gauge Port, w/Check Valve	163	43
TTF-SSR-S020/S020-00-00-0	Steel Tank Top Filter, S/R Line Series, #20 SAE Left and Right Ports, No By-Pass, No Gauge Port, No Check Valve	163	43
TTF-SSR-S020/S020-00-00-V	Steel Tank Top Filter, S/R Line Series, #20 SAE Left and Right Ports, No By-Pass, No Gauge Port, w/Check Valve	163	43
TTF-SSR-S024/000-**-**-0	Steel Tank Top Filter, S/R Line Series, #24 SAE Left Port, No Right Port, By-Pass, Gauge Port, No Check Valve	163	43
TTF-SSR-S024/000-**-**-V	Steel Tank Top Filter, S/R Line Series, #24 SAE Left Port, No Right Port, By-Pass, Gauge Port, w/Check Valve	163	43
TTF-SSR-S024/000-00-00-0	Steel Tank Top Filter, S/R Line Series, #24 SAE Left Port, No Right Port, No By-Pass, No Gauge Port, No Check Valve	163	43
TTF-SSR-S024/000-00-00-V	Steel Tank Top Filter, S/R Line Series, #24 SAE Left Port, No Right Port, No By-Pass, No Gauge Port, w/Check Valve	163	43
TTF-SSR-S024/S024-**-**-0	Steel Tank Top Filter, S/R Line Series, #24 SAE Left and Right Ports, By-Pass, Gauge Port, No Check Valve	163	43
TTF-SSR-S024/S024-**-**-V	Steel Tank Top Filter, S/R Line Series, #24 SAE Left and Right Ports, By-Pass, Gauge Port, w/Check Valve	163	43
TTF-SSR-S024/S024-00-00-0	Steel Tank Top Filter, S/R Line Series, #24 SAE Left and Right Ports, No By-Pass, No Gauge Port, No Check Valve	163	43
TTF-SSR-S024/S024-00-00-V	Steel Tank Top Filter, S/R Line Series, #24 SAE Left and Right Ports, No By-Pass, No Gauge Port, w/Check Valve	163	43
VA-A03/05-EAA	D03 to D05 Aluminum Valve Adaptor	93	24
VA-A03/05-EBA	D03 to D05 Aluminum Valve Adaptor	93	24
VA-A03/05-MAA	D03 to D05 Aluminum Valve Adaptor	93	24
VA-A03/05-MBA	D03 to D05 Aluminum Valve Adaptor	93	24
VA-A05/08-EAA	D05 to D08 Aluminum Valve Adaptor	94	24
VA-A05/08-MAA	D05 to D08 Aluminum Valve Adaptor	94	24
VA-AF6/F7-EAA	2F06 to 2F07 Aluminum Valve Adaptor	95	24
VA-AF6/F7-MAA	2F06 to 2F07 Aluminum Valve Adaptor	95	24
VA-AP8/P0-EAA	P08 to P10 Aluminum Valve Adaptor	96	24
VA-AP8/P0-MAA	P08 to P10 Aluminum Valve Adaptor	96	24
VA-S03/05-EAA	D03 to D05 Steel Valve Adaptor	93	24
VA-S03/05-EBA	D03 to D05 Steel Valve Adaptor	93	24
VA-S03/05-MAA	D03 to D05 Steel Valve Adaptor	93	24
VA-S03/05-MBA	D03 to D05 Steel Valve Adaptor	93	24
VA-S05/08-EAA	D05 to D08 Steel Valve Adaptor	94	24
VA-S05/08-MAA	D05 to D08 Steel Valve Adaptor	94	24
VA-SF6/F7-EAA	2F06 to 2F07 Steel Valve Adaptor	95	24
VA-SF6/F7-MAA	2F06 to 2F07 Steel Valve Adaptor	95	24
VA-SP8/P0-EAA	P08 to P10 Steel Valve Adaptor	96	24
VA-SP8/P0-MAA	P08 to P10 Steel Valve Adaptor	96	24

Make the Connection with **magnaloy**

*Whatever your Fluid Power Unit needs,
magnaloy has the products
to keep you connected.*



Flexible Drive Couplings

Top-of-the-line magnesium couplings are lighter, yet stronger than either cast iron or aluminum. They also offer better corrosion resistance and easier handling.



Magnaloy Hydraulic Bar Manifolds & Accessories

Complete line of In-line Bar Manifolds, Subplates, Cover Plates, Valve Adaptors, Integrated Circuit Manifolds, and Accessories to make the design and fabrication of Hydraulic Circuitry simple and easy. Wide range of sizes include: D03, D05, D05H & D08 in aluminum and steel with ports available in SAE, NPTF, BSPP, and BSPT styles. Custom design and fabrication also available, consult factory.

Accessories

Filler Breather Adaptors, Filler Breathers, Reservoir Flanges, Suction Strainers, Gauge Isolators, Liquid Level Gauges, Modular O-Ring Kits.

Pump/Motor Mounts

Precision machined aluminum & custom steel pump/motor mounts directly connect the motor and pump while ensuring accurate shaft alignment and enclosing the coupling. Vertical and horizontal models readily available from stock.



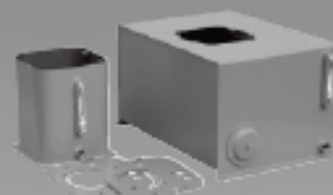
Rod End Couplers

Two models of accurately machined high tensile cylinder rod end alignment couplers offer 7° or 10° spherical and 1/8" parallel misalignment capabilities.



PM 90 Couplings

Economical PM-90 Iron Powder Couplings have long lasting nitrile, hytrel or urethane inserts. Double set screws give excellent gripping power.



Magnaloy Reservoirs & Reservoir Accessories

Magnaloy offers a complete line of standard reservoirs and reservoir accessories. In addition, we offer custom reservoir fabrication to meet our customer specific needs. Reservoir accessories such as Clean Out Covers and SAE Couplings are available for the "do-it-yourself" reservoir manufacturer.



Magnaloy Pressure Switch

Pressure Sensing switch capable of sensing up to three (3) separate pressures. Each sensor is externally independently adjustable from 200 to 4000 psi. Viton seals provide wide fluid compatibility range.